



# Welcome, JHCDC Board!

May 22, 2024





# LSS Mission

*Guided and motivated by the compassion of Christ, we serve and care for people in need.*

- Hunger Relief
- Refugee Services
- HIV Services
- Representative Payee Services
- Career & Financial Coaching



Services are NOT faith-based, and are available to anyone, regardless of faith.

# THE LSS FOOD PANTRY

*Open five days a week to provide nourishment for any household in need*

- 16,140 pantry distributions YTD
- Backpack Program for children at 9 schools
- Serving Our Seniors for 460 aging adults each month



# REFUGEE RESETTLEMENT

*New lives for those fleeing war and persecution*



- Reception & Placement
- Employment
- Youth Academic Tutoring & Mentoring Programs
- Tiered Case Management
- Preferred Communities & Match Grant (intensive case management programs)

So far this year, LSS has served more than 2,200 refugees.

# REFUGEE RESETTLEMENT

*New lives for those fleeing war and persecution*



In addition to direct services, LSS is regional contract manager and supervises provision of services by these contractors:

- Catholic Charities
- Jacksonville Area Legal Aid
- Early Learning Coalition
- Beyond 90



# STEPS 2 SUCCESS

*Comprehensive support for anyone seeking a more secure financial future*

- Integrated career and financial coaching for 101 clients
- On average, clients are:
  - Increasing credit score by **50+ points**
  - Increasing net income by **\$1,300+ per month**



# ACE PROGRAM

*Advocacy, Care and Education for people living with HIV*

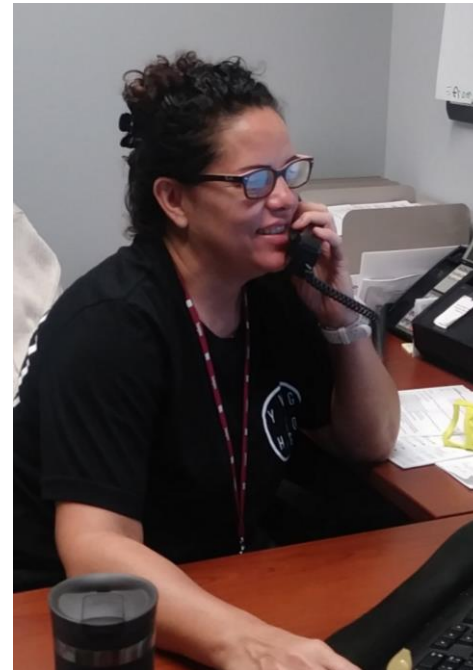


- 11 supportive services plus access to onsite physician and dental care and a pharmacy through CAN
- Viral suppression rate for LSS clients is over 90% (66% nationwide)

# REP PAYEE SERVICES

*Homelessness prevention for a high-risk population*

- Budgeting and bill payment for 572 clients unable to manage their own finances
- Intensive case management for 74 clients most in need of extra support





44,938

men, women, and children served in 2023



40,721

Food-insecure  
people fed

**HUNGER  
RELIEF**



972

People with  
HIV/AIDS served

**HIV  
SERVICES**



586

People at risk of  
homelessness  
maintained  
stable housing

**REPRESENTATIVE  
PAYEE SERVICES**



2,542

Refugees  
received  
comprehensive  
support

**REFUGEE  
SERVICES**



117

People received  
financial and  
career coaching

**STEPS 2  
SUCCESS**

LSS had an overhead rate of 6.2%, meaning almost 94 cents of every dollar went directly to client services!

# Other Onsite Services



Plus the Third Tuesday Resource Fair,  
*Featuring the Ascension St. Vincent's mobile unit every month,  
plus other resources including:*





Collectively, LSS and its onsite partners touched more than

**20,000**

**lives last year!**

## JHCDC Funds

	FY2022	FY2023	FY2024
HOPWA	\$449,136	\$604,715	\$750,000
CDBG - PFI	\$228,497 Roofing/flooring	\$47,886 Parking lot	\$45,500 LED lighting
CDBG - PSG	--	--	\$21,780 Senior feeding

## Impact of JHCDC Funds: HOPWA



HOPWA provided rent and utility assistance to:

- 238 unique households in 2023
- 30 unique households in 2024 YTD

**HOPWA assistance prevented these individuals/families from eviction and homelessness.**



## Impact of JHCDC Funds: Serving Our Seniors

SOS increased the amount of food 460 low-income seniors receive in their monthly food delivery by 40%.



CDBG assistance prevented these at-risk seniors from going hungry at the end of each month, once monthly food benefits were exhausted.

# Impact of JHCDC Funds: Roof (Before)



FAILING CURB FLASHING



VEGETATION FORMING IN AND AROUND  
ROOF DRAIN



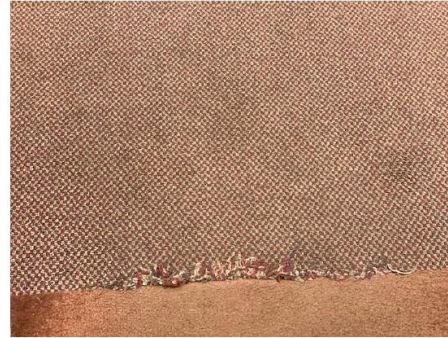
EF CURB SUBMERGED IN WATER



REPAIR MADE USING WIP ICE AND WATER SHIELD - THIS IS NOT  
COMPATIBLE OR DESIGNED FOR LOW SLOPE ROOF APPLICATIONS



# Impact of JHCDC Funds: Carpet (Before)





## Impact of JHCDC Funds: Parking Lot (Before)





Now, see your impact first-hand.  
Please join us for a tour of LSS!