

PUBLIC NOTICE
PSEC AGENDA
PROFESSIONAL SERVICES EVALUATION COMMITTEE MEETING
Thursday, April 6, 2023, 10:00 a.m.
 Eighth Floor, Conference Room 851
 Ed Ball Building, 214 N. Hogan Street
 Jacksonville, FL 32202

Join Teams Meeting
[Teams Meeting](#)

The Chief of the Procurement Division offers the following items for the PSEC Agenda. The posting of this agenda serves as an official notice of the City's intended decision for all recommended actions above the formal threshold of \$65,000.00. Please refer to 126.106(e), if you wish to protest any of these items.

Committee Members: Robert Waremburg, Chairman
 Brennan Merritt, Treasury
 James McCain, Jr., OGC

Subcommittee Members	ITEM #	BID/RFP #	TITLE & ACTION	MOTION	CONTRACT EXP	OUTCOME
Barbara Holton Robert Quinn	1	P-12-23	Introduce & Review Scope Workers Compensation Managed Care Services Finance and Administration/Risk Management Division	That the committee approve the scope of service/ Request for proposal (RFP) as presented with such minor changes thereto as may be approved by the Chief Procurement Officer and the Office of General Counsel to clarify the intent of the using agency and to ensure compliance with That the committee approve the scope of service/Request for proposal (RFP) as presented with such minor changes thereto as may be approved by the Chief Procurement Officer and the Office of General Counsel to clarify the intent of the using agency and to ensure compliance with the City's ordinances, Procurement policies and procedures and applicable state and federal laws.		
Brian Burkett Guy Parola	2	P-40-20	Fee & Contract Negotiations Professional Engineering Services for Liberty Street Marina Project Department of Public Works/ Engineering & Construction Management Division	That the City of Jacksonville enter into a contract with HDR Engineering, Inc., for Professional Engineering Services for Liberty Street Marina Project, that incorporate the attached Scope of Services identified as Exhibit 'A' and Fee Schedule identified as Exhibit 'B', provide a lump-sum amount for Design Services in the amount of \$941,375.03, with a maximum indebtedness to the City in the amount of \$941,375.03, the period of service is from execution of the contract to project completion, all other terms and conditions are as provided in the RFP and the City's standard contract language		
Niktia Reed Michael Derbaun	3	P-50-22	Subcommittee Report Professional Design Services for Forest Trail Road Drainage Improvements Department of Public Works/ Engineering & Construction Management Division	It is the consensus of the committee that of the four (4) proposals received in response to the Request for Proposal, all were found to be responsive, interested, qualified and available to provide the required services. The ranking of first, second and third designates the order of qualification of these firms to perform the services and alphabetically they are: 1) Adkinson Engineering P.A. 2) Construction & Engineering Services Consultants, Inc. 3) Wright-Pierce, Inc. We recommend the above list is forwarded to the Mayor for final selection so that fee and contract negotiations may begin with Construction & Engineering Services Consultants, Inc. the number one (1) ranked firm		

Robin Smith Johnathan Page	4	P-37-22	Subcommittee Report Construction Engineering and Inspection Services for 5 Riverfront and 3 Park Improvement Projects Department of Public Works/Engineering & Construction Management Division	It is the consensus of the committee that of the six (6) proposals received in response to the Request for Proposal, all were found to be responsive, interested, qualified and available to provide the required services. The ranking of first, second and third designates the order of qualification of these firms to perform the services and alphabetically they are: 3) A/E Engineering, Inc. 2) Construction & Engineering Services Consultants, Inc. 1) V/A Consulting Services, Inc. We recommend the above list is forwarded to the Mayor for final selection so that fee and contract negotiations may begin with V/A Consulting Services, Inc., the number one (1) ranked firm.	
Robin Smith Tom McKnight	5	P-47-22	Approval to proceed with Evaluation of Two (2) Proposals Received Construction Engineering & Inspection Services for Four Fire Station Projects Department of Public Works/Engineering & Construction Management Division	That the committee approves proceeding with evaluation of the two (2) proposals received in accordance with Section 126.302 (f) of the Procurement Code.	
Robin Smith Tom McKnight	6	P-04-23	Introduce and Review Scope Construction Engineering and Inspection Services for Four Downtown Roadway Projects Department of Public Works/Engineering & Construction Management Division	That the committee approve the scope of service/Request for proposal (RFP) as presented with such minor changes thereto as may be approved by the Chief Procurement Officer and the Office of General Counsel to clarify the intent of the using agency and to ensure compliance with the City's ordinances, Procurement policies and procedures and applicable state and federal laws.	
Robin Smith Jill Enz	7	P-08-23	Introduce and Review Scope Professional Design Services for Sports Fields Department of Public Works/Engineering & Construction Management Division	That the committee approve the scope of service/Request for proposal (RFP) as presented with such minor changes thereto as may be approved by the Chief Procurement Officer and the Office of General Counsel to clarify the intent of the using agency and to ensure compliance with the City's ordinances, Procurement policies and procedures and applicable state and federal laws.	
Will Williams Tim Cruickfield	8	P-17-19	Contract Amendment No. 5 Professional Architectural and Engineering Services for Programming, Site Selection and Design of New Medical Examiner's Office Department of Public Works/Engineering & Construction Management Division	That Contract 10754, originally executed February 4, 2020 between the City of Jacksonville and Gresham Smith for Programming, Site Selection and Design of the New Medical Examiner's Office be amended to incorporate the attached Scope of Services identified as Exhibit "K" and Fee Summary identified as Exhibit "L"; increase the lump-sum amount for Design Services of \$2,260,469.15 by \$218,030.09 for Design Services to a new lump-sum amount of \$2,478,499.24, thereby, increasing the maximum indebtedness by \$218,030.09 to a new maximum amount of \$2,702,677.44. All other terms and conditions shall remain the same.	To project completion
Meeting Adjourned: _____					

"The next PS&C meeting is scheduled to be held on Thursday, April 20, 2023."



ONE CITY. ONE JACKSONVILLE.

MEMORANDUM

March 30, 2023

TO: Dustin Freeman, Chairman
Professional Services Evaluation Committee

FROM: Barbara Holton, WC Claims Manager
Risk Management Division

Subject: Certification Letter for P-12-23 Workers Compensation Managed Care Services

Please take appropriate action to issue a Request for Proposal (RFP) for the referenced professional services.

The following information is furnished in accordance with chapter 126.302 of the City Ordinance Code.

1. The general purpose of the service or study:

See attached RFP

2. The Objective of the study or services:

is to make available professional services as stated in the RFP.

3. The estimated period of time needed for the service or study:

The contract period would be for one year with 4 renewals, beginning on October 1, 2023.

Linda Bass
Vice President Regional Sales
CorVel Corporation
Linda_Bass@corvel.com

11. A signed statement to the effect the individuals responsible for developing the scope and Certification letter and the two individuals named herein to serve as subcommittee Members, have read and understand the Procurement Manual and Procurement Committee Guidelines dated April, 2022



WC Claims Manager
TITLE



WC Asst. Claims Manager
TITLE



City of Jacksonville, Florida

Lenny Curry, Mayor

Department of Public Works
Engineering & Construction Management Division
214 N. Hogan Street, 10th Floor
Jacksonville, FL 32202
(904) 255-8762
www.coj.net

ONE CITY ONE JACKSONVILLE

March 21, 2023

TO: Dustin Freeman, Chairman
Professional Services Evaluation Committee

THRU: Steven D. Long, Jr., P.E.
Director

FROM: Brian Burkett **BBB**
Waterfront Project Manager

Guy Parola
Operations Manager

SUBJECT: P-40-20 Professional Engineering Services for Liberty Street Marina Project

The Engineering Division has negotiated with the consultant selected for Professional Engineering Services for Liberty Street Marina Project, resulting in the Scope of Services, Exhibit A and Contract Fee Schedule, Exhibit B, attached. JSEB firms to be utilized to meet the 20% Participation Percentage Plan for this contract are detailed on a separate attachment.

Accordingly, this is to recommend that the City of Jacksonville enter into a contract with HDR Engineering, Inc. for Professional Engineering Services for Liberty Street Marina Project, that includes the attached Scope of Services, Exhibit "A" and Fee Schedule, Exhibit "B", to provide a lump sum amount for Design Services in the amount of \$941,375.03, with a maximum indebtedness to the City in the amount of \$941,375.03 and with an expiration date of Project Completion. All other terms and conditions are as provided in the RFP and the City's standard contract language.

Funding for this project is as follows:

ACCOUNTS:	
33101.167101.565030.010588.00000000.00000.00000000	
TOTAL	\$941,375.03

SDL/w

Attachment: Exhibits A & B
JSEB Participation

cc: Lori West, Engineering and Construction Management
Bob Scott, P.E., Engineering and Construction Management



**SCOPE of SERVICES
CITY OF JACKSONVILLE, FLORIDA
LIBERTY ST. MARINA DEVELOPMENT
(REVISION 3)**

I. SCOPE OF PROJECT

Engineering, permitting, and construction documents for the bidding and construction following:

- Services include 100% design, bid documents and required permits for a new marina inside the existing Liberty Street Basin.
 - Note: 8 hours has been budget for inquiries with FDOT related to sewage line and gate on Coastline Dr. bridge, but we anticipate these being relocated off FDOT structures.
 - Note: City of Jacksonville 10-Set Review is included.
- Dredging design to target marina depth of -8.5' NAVD (-7' MLW)
 - Note: dredging will be proximate to existing bulkhead on the west side of the basin, which has not been improved and little-to-no known data exists. It is assumed that the bulkhead improvements will be constructed prior to marina dredging.
- Approximately 50 boat slips with at least 10% available for transient vessels using concrete Bellingham docks (approx. 2,350 LF) w/ electric and potable water service to each slip.
 - Note: south pier may be fixed or floating, depending on water depths an appropriate anchorage/foundation requirements (TBD)
- Designated water taxi landing dock
- Dedicated area for dockage of tour boats and rentals (boats and jet skis)
- Sewage pump-out and fueling facilities
- Harbor/Dock Master Building w/ public restrooms, showers, and laundry in close proximity
 - Note: it is assumed that this structure will be a pile-supported foundation for the building and trestle
- Landside scope of services is limited to that necessary to install utilities servicing the marina. It is assumed that landside utilities will be installed within the survey footprint, which extends nominally 100 feet north of the Courthouse bulkhead.
- All survey and a portion of the required geotechnical scope of services is being performed under a separate scope of services for the Courthouse and Market Street Bulkhead.

II. PROJECT REQUIREMENTS

A. Design Requirements:

1. The Consultant shall design and prepare construction documents for bidding (and construction) of the new Liberty Street Marina project.

2. The Consultant shall design within the project limits and shall coordinate its work with all necessary utility companies.
3. The City's Master Storm Water Management Plan.
4. The City's Land Development Procedures Manual.
5. Manual on Uniform Traffic Control Devices.
6. FDOT Minimum Standards for Design, Construction and Maintenance of Streets and Highways
7. Florida's Design Criteria for Resurfacing, Restoration and Rehabilitation (RRR) of Streets and Highways
8. FDOT Design Standard Index

B. Sequence of Services:

1. Topographic, hydrographic and subsurface utility surveys will be performed under a separate scope of services for the Courthouse and Market Street bulkhead design.
2. Geotechnical investigation and soil borings performed separately with the geotechnical investigation for the Courthouse and Market Street bulkhead design. Mobilization fees for geotechnical equipment specific to the marina scope is included.
3. Coordination with permitting agencies for existing permits compliance (FDEP Individual Environmental Resource permit and ACOE Standard Permit).
4. Preliminary 30% design, plans, and cost estimates for environmental permit applications.
5. 60%, 90%, 100%, and IFB (Issued for Bid) submittals following City review & approval.

C. Project Submittal Requirements:

Concept Plan Finalization – Consultant will review and, if necessary, refine the marina plan layout included in the RFQ. An updated concept sketch will be provided in electronic (PDF) format for the City's review and comment, inclusive of representative photos and/or graphics of key components. One virtual or in-person meeting will be held with the City to review the updates and gain concurrence. Participation in public meetings or additional coordination meetings with other stakeholders is not included.

30% Submittal (Permit Set) – Preliminary designs, plans and opinions of construction cost will be prepared during this phase, sufficient in detail to initiate the environmental permitting process. Up to (6) sets of 11 x 17 plans will be provided to the City for review/commentary as well as electronic copies (in pdf format) via CD, flash drive or FTP site link (Consultant provided). The submittal will accompany environmental permit applications prepared and submitted by the Consultant.

60% Submittal – Design plans, technical specifications and opinion of construction costs will be prepared to the 60% level of completion per typical industry standards. Up to (6) sets of 11 x 17 plans will be provided to the City for review/commentary along with electronic copies (in pdf format) via CD, flash drive, or FTP site download link (Consultant provided).

90% Submittal – Pre-final design plans, technical specifications and opinions of construction



cost will be prepared to the 90% level of completion per typical industry standards. Up to (6) sets of 11 x 17 plans will be provided to the City for review/commentary along with electronic copies (in pdf format) via CD, flash drive, or FTP site download link (Consultant provided).

100% Submittal – Final design plans, technical specifications, and an opinion of construction cost will be prepared to the 100% completion level of completion per typical industry standards. The 100% submittal will be provided to the City in electronic (PDF) format, and up to six hard copies will be provided upon request. This package will be prepared in a manner consistent with application for COJ Building Department permits (to be processed/obtained by the City).

IFB Submittal – Issued for Bid (IFB) construction documents (final plans, technical specifications, and opinion of construction cost) will be packaged and combined with pre-prepared COJ bid forms for the public advertisement (by the City). Up to (1) hard copy of the IFB package will be provided to the City along with electronic copies (in pdf format) via CD, flash drive, or via FTP site download link (Consultant provided).

Following acceptance of each submittal package, a PDF set of drawings and technical specifications for construction shall be furnished to the Project Officer. The City will then determine if project will be constructed through traditional Design/Bid/Build (D/B/B) or Design/Build (D/B) method. If D/B/B is selected, finalization of bid and construction documents will be negotiated. If D/B, preliminary calculations will be provided to the City.

Opinions of Cost: Opinions of probable construction cost will be furnished at each completion level submittals in two copies to the City.

Design Reviews: The Consultant, when submitting drawings at each completion point, will allow three (3) weeks review time for each submittal and will attend a review conference at the end of each period to discuss the City comments. Any changes, refinements, or modifications developed in each review shall be incorporated into the design or otherwise disposed of before proceeding to follow-on design work. Each City mark-up shall be returned with the next follow-on submittal, showing the Consultant's response to the City comments.

D. Permitting Requirements:

1. The Consultant shall request and attend a review and coordination meeting with each required permitting agency.
2. The Consultant shall take minutes/notes of all meetings with the permitting agencies. These notes shall be transcribed and copies furnished to the Project Officer.
3. The Consultant shall prepare and submit supporting documentation and furnish to Project Officer for signatures for submittal. A permit fee allowance has been included, as summarized in Terracon and Pond proposals.



E. Additional Requirements:

1. Provide coordination, pertinent to phases with the Department of Parks, Recreation and Community Services, the Engineering and Construction Management Division and the JEA.
2. Provide coordination with the Health Department and utility companies as required.
3. The City shall be the Owner of the final documents.
4. The Consultant shall take notes of all design/review meetings held with City agencies. These notes shall be transcribed and furnished to the Project Officer for his concurrence as soon as practical after the date of the meeting.

III. TIME SCHEDULE

A. It is currently anticipated that the project time schedule will be as follows:

1. Field work (surveys, geotechnical investigations, inspections, etc.) will be completed within 60 days from NTP.
2. 30% submittal will be 120 days from NTP
3. 60% review submittal will be 60 days following receipt of the 30% review comments.
4. 90% review submittal will be 60 days following receipt of the 60% review comments.
5. 100% review submittal will be 30 days following receipt of the 90% review comments.
6. IFB submittal will be 30 days following issuance of 100% submittal.

IV. FEE

The fee and costs associated for this scope of services is **\$ 941,375.03** and as outlined in the attached Exhibit B (fee summary).

V. NOTICE TO PROCEED

No work on this project shall be performed until a formal notice to proceed has been issued.

- NOTE – Bidding and construction assistance including shop drawing review and RFI responses shall be negotiated under a separate purchase order. Engineering services during bidding and construction are not part of this scope of work.

CONTRACT FEE SUMMARY FOR THE ENGINEERING DIVISION

CITY OF JACKSONVILLE, FLORIDA

EXHIBIT B

1. PROJECT Professional Engineering Services Liberty Street Marina		2. PROPOSAL NUMBER P - 4 - 20		
3. CONSULTANT HDR Engineering, Inc.		4. DATE OF PROPOSAL 3/6/2023		
PART TWO - LABOR RELATED COSTS				
DIRECT LABOR	HOURLY RATE	ESTIMATED HOURS	ESTIMATED COST	TOTAL
Principal	\$ 120.00	103	\$ 12,360.00	
Project Manager	\$ 90.00	470	\$ 42,300.00	
Senior Engineer	\$ 75.00	413	\$ 30,975.00	
Junior Engineer	\$ 42.00	558	\$ 23,436.00	
Sr. CADD Technician	\$ 58.00	417	\$ 24,186.00	
Clerical	\$ 38.00	46	\$ 1,748.00	
Accountant	\$ 38.00	28	\$ 1,008.00	
5. TOTAL DIRECT LABOR				\$ 136,013.00
6. OVERHEAD (COMBINE FRINGE BENEFIT AND ADMINISTRATIVE) OVERHEAD RATE - 164.9% X TOTAL DIRECT LABOR				\$ 224,285.44
7. SUBTOTAL - LABOR + OVERHEAD (ITEMS 5 & 6)				\$ 360,298.44
8. PROFIT - LABOR RELATED COSTS (ITEM 7) X 10%				\$ 36,029.84
PART THREE - OTHER DIRECT COSTS				
9. MISCELLANEOUS DIRECT COSTS				
24" x 36" Black/White plans			\$	160.00
11 X 17 Copies			\$	80.00
8.5" x 11" Copies			\$	40.00
Postage			\$	20.00
Courier Service			\$	80.00
MISCELLANEOUS DIRECT COSTS SUBTOTAL				\$ 380.00
10. SUBCONTRACTS				
Terracon (Permitting)			\$	50,249.14
Intera (Coastal Engineering)			\$	47,845.20
Meskel (Geotechnical)			\$	203,862.41
Pond (Architecture, Buildings, Utilities and Landside Permitting)			\$	243,010.00
SUB-CONTRACT SUBTOTAL				\$ 544,966.75
TOTAL LUMP SUM AMOUNT (ITEMS 5, 6, 8, 9 & 10)				\$ 941,375.03
11. REIMBURSABLE COSTS (LIMITING AMOUNT)				
TRAVEL				
OTHER (SPECIFY)				
SUBTOTAL REIMBURSABLE				
PART FOUR - SUMMARY				
TOTAL AMOUNT OF CONTRACT (LUMP SUM PLUS REIMBURSABLE)				\$ 941,375.03
ITEMS 5,6,8,9,10,&11				



8001 Baymeadows Way, Suite 1
Jacksonville, FL 32256
P (904) 900-6494
F (904) 268-5255
Terracon.com

January 26, 2023

Mr. Craig McGillawee
HDR Engineering, Inc.
76 S. Laura Street, Suite 1600
Jacksonville, Florida 32202

E-mail: Craig.McGillawee@HDRInc.com

**Re: Proposal for Permitting Services
City of Jacksonville Liberty Street Marina
Jacksonville, Duval County, Florida
Terracon Proposal No. PEQ227532**

Dear Mr. McGillawee:

Terracon Consultants, Inc. (Terracon) appreciates the opportunity to submit this proposal to HDR Engineering, Inc. (Client) to provide permitting services for the above referenced project in Jacksonville, Florida. This proposal outlines our understanding of the project, our planned work scope and associated fee, and our terms and conditions associated with the performance of this work.

If this proposal meets with your approval, work may be initiated by returning a fully executed copy of the attached Agreement for Services. Please provide the landowner contact information or access information with the signed agreement. The terms, conditions, and limitations stated in the Agreement for Services and sections of this proposal incorporated therein, shall constitute the exclusive terms and conditions and services to be performed for this project.

We appreciate the opportunity to provide this proposal. If you have questions or comments regarding this proposal or require additional services, please give us a call.

Sincerely,
Terracon Consultants, Inc.

Brett Anderson
Group Manager
(904) 470-2205
Brett.Anderson@Terracon.com

Gary K. Howalt, PWS
Senior Principal/Senior Scientific Consultant
(904) 470-2214
Gary.Howalt@Terracon.com

Attachments: Detailed Scope of Services
City of Jacksonville Contract Fee Summary

Explore with us

Proposal for Permitting Services

COJ Liberty Street Marina ■ Duval County, Florida

January 26, 2023 ■ Terracon Proposal No. PEQ227532



DETAILED SCOPE OF SERVICES

1.0 PROJECT INFORMATION

The approximately 5.05-acre project area lies south of Courthouse Drive and South Liberty Street in the St. Johns River, in Section 38, Township 2 South, and Range 26 East in Jacksonville, Duval County, Florida. The site historically was used as a pile supported parking lot for the Duval County Courthouse until 2017 when the structure was removed and the foundation for the structures were extracted or cut down to at least two feet below the existing river bottom. The project is to construct a boat marina at the site which will require environmental permits. If this is not accurate, or if you have additional useful information, please inform us as soon as possible.

Based on Terracon’s understanding of the project, permitting actions will be required through the United States Army Corps of Engineers (USACE), and the Florida Department of Environmental Protection (FDEP). The following sections outline Terracon’s scope and fees to provide environmental services to support permitting efforts.

2.0 FLORIDA DEPARTMENT OF ENVIRONMENTAL PROTECTION (FDEP) AND U.S. ARMY CORPS OF ENGINEERS (USACE) PERMITTING

Terracon will assist the project team in preparation and submittal of permit application packages for an Individual Environmental Resource Permit, along with Sovereign Submerged Lands (SSL) authorization and USACE for a Standard Permit to obtain approval from the environmental agencies to construct the Liberty Street Marina on the Northbank of the St. Johns River. Terracon will prepare responses to requests for additional information, attend site visits with agencies, and coordinate with the project team and the agencies to obtain permits. Terracon will also coordinate with the project team, participate in project progress meetings, and meetings with regulatory agency staff as requested.

3.0 PERMIT PROCESSING FEES

Terracon will pay the processing fee to FDEP upon submittal of the permit application package. The process fee for an Individual Environmental Resource Permit for a marina with over 50 boat slips is \$9,000.00. Terracon will also pay the SSL authorization fee of \$739.88 to FDEP when requested during the approval process. Terracon will pay the processing fee to USACE upon issuance of the Standard Permit. The process fee for a USACE Standard Permit is \$100.00.

Terracon applies a 15% processing fee to application fees for subconsultant pay when paid agreements to carry these fees through our accounting system.

4.0 ADDITIONAL SERVICES NOT INCLUDED

Should it be necessary to expand our services beyond those outlined in this proposal, we will notify you and send a supplemental proposal stating the additional services and fee. We will not proceed without your authorization.

5.0 SCOPE AND REPORT LIMITATIONS

Client shall secure all necessary site related approvals, permits, licenses, and consents necessary to commence and complete the Services and will execute any necessary site access agreement. Consultant will be responsible for supervision and site safety measures for its own employees but shall not be responsible for the supervision or health and safety precautions for any third parties, including Client's contractors, subcontractors, or other parties present at the site. In addition, Consultant retains the right to stop work without penalty at any time Consultant believes it is in the best interests of Consultant's employees or subcontractors to do so in order to reduce the risk of exposure to the coronavirus. Client agrees it will respond quickly to all requests for information made by Consultant related to Consultant's pre-task planning and risk assessment processes. Client acknowledges its responsibility for notifying Consultant of any circumstances that present a risk of exposure to the coronavirus or individuals who have tested positive for COVID-19 or are self-quarantining due to exhibiting symptoms associated with the coronavirus.

The findings and conclusions presented in the final report will be based on the site's current utilization, the anticipated future use of the site, if provided to Terracon, and the information collected as discussed in this proposal. Please note that we do not warrant database or third-party information (such as from interviewees) or regulatory agency information used in the compilation of plans or reports. No warranties, express or implied, are intended or made.

6.0 SCHEDULE

Terracon is prepared to begin upon receipt of written notice to proceed (NTP).

7.0 COMPENSATION

Task	Fees
FDEP & USACE Permitting	\$38,933.28
Permit Processing Fees	\$11,315.86
TOTAL	\$50,249.14

The project will be invoiced monthly. Payments on invoices will be due in full within 30 days from the date of the invoice.

8.0 OUR COMMITMENT TO SAFETY

Safety is one of Terracon's core values and our commitment to an Incident and Injury-Free® philosophy is one of the pillars of our current Strategic Plan. Incident and Injury-Free (IIF) is about care and concern for our people. It is our personal and organizational commitment at all levels of the company to everyone going home safe to their family every day. It is where safety is held as a core value as well as an operational priority. Working safely is an inseparable part of working correctly, just as much as other operational priorities, in particular quality, profitability and schedule. IIF is our commitment to our people, who we value for who they are and what they do. We strive to build health and safety into all aspects of our business and into the thinking of our employees.

CONTRACT FEE SUMMARY FOR ENGINEERING DIVISION				
CITY OF JACKSONVILLE, FLORIDA				
PART ONE - GENERAL				
1. PROJECT		2. PROPOSAL NUMBER		
COJ Liberty Street Marina		PEQ227532		
3. CONSULTANT		4. DATE OF PROPOSAL		
Terracon Consultants, Inc.		1/26/2023		
PART TWO - LABOR RELATED COSTS				
5. DIRECT LABOR	HOURLY RATE	ESTIMATED HOURS	ESTIMATED COST	TOTAL
Principal or Project Manager	\$ 66.83	34	\$ 2,272.22	
Senior Scientist	\$ 47.60	98	\$ 4,664.80	
Project Scientist	\$ 36.06	88	\$ 3,173.28	
Designer/Cadd	\$ 44.71	16	\$ 715.36	
Technician	\$ 21.73	40	\$ 869.20	
Archaeologist	\$ 47.60	0	\$ -	
Clerical	\$ 23.00	8	\$ 184.00	
TOTAL DIRECT LABOR				\$ 11,678.88
6. OVERHEAD (COMBINE FRINGE BENEFIT AND ADMINISTRATIVE)				
OVERHEAD RATE - 197.67% X TOTAL DIRECT LABOR				\$ 23,480.94
7. SUBTOTAL - LABOR + OVERHEAD (ITEMS 5 & 6)				\$ 35,359.80
8. PROFIT - LABOR RELATED COSTS (ITEM 7) X 10%				\$ 3,535.98
PART THREE - OTHER COSTS				
9. MISCELLANEOUS DIRECT COSTS				
24" x 36" Black/White plans			\$0.00	
11 X 17 Copies			\$0.00	
8.5" x 11" Copies			\$0.00	
Postage			\$0.00	
Courier Service			\$0.00	
MISCELLANEOUS DIRECT COSTS SUBTOTAL				\$0.00
10. SUBCONTRACTS - LUMP SUM				
SUB-CONTRACT SUBTOTAL				\$0.00
TOTAL LUMP SUM AMOUNT (ITEMS 5,6,8,9 & 10)				\$ 38,895.78
11. REIMBURSABLE COSTS (LIMITING AMOUNT)				
TRAVEL				\$37.50
OTHER (Permit Processing Fees)				\$ 11,315.86
SUBTOTAL REIMBURSABLE				\$ 11,353.36
PART FOUR - SUMMARY				
TOTAL AMOUNT OF CONTRACT (LUMP SUM PLUS REIMBURSABLE)				
ITEMS 5,6,8,9,10,&11				\$ 50,249.14

DATE: 26-Jan-23
 CLIENT: City of Jacksonville
 PROJECT: COJ Liberty Street Marina

Terracon Consultants, Inc.

	Proj manager HRS	Sr. Scientist HRS	Proj Scientist HRS	Drafter Hours	Technician HRS	Archaeologist HRS	Clerical HRS	TOTAL HRS
a. Final Design								
24" x 36" Black/White plans	0	0	0	0	0	0	0	0
11 X 17 Copies	0	0	0	0	0	0	0	0
8.5" x 11" Copies	0	0	0	0	0	0	0	0
Mileage	0	0	0	0	0	0	0	0
Postage	0	0	0	0	0	0	0	0
Counter Service	0	0	0	0	0	0	0	0
Total	0	0	0	0	0	0	0	0
b. Permitting & Other								
Pre-application Meetings	8	8	8	8	0	0	0	24
ERP Permit	8	40	40	8	20	0	4	120
ACOE Permit	8	40	40	8	20	0	4	120
Project Coordination and Meetings	10	10	0	0	0	0	0	20
Total	34	98	88	16	40	0	4	264
c. Project Submittals								
24" x 36" Black/White plans	0	0	0	0	0	0	0	0
11 X 17 Copies	0	0	0	0	0	0	0	0
8.5" x 11" Copies	0	0	0	0	0	0	0	0
Mileage	0	0	0	0	0	0	0	0
Postage	0	0	0	0	0	0	0	0
Counter Service	0	0	0	0	0	0	0	0
Total	0	0	0	0	0	0	0	0
Total Hours	\$218.83	\$155.88	\$118.07	\$146.40	\$71.15	\$155.86	\$75.31	\$602.48
Hourly Rate	\$7,440.09	\$15,274.28	\$10,390.49	\$2,342.35	\$2,846.08	\$0.00	\$602.48	\$38,695.78
Total Labor Dollars	\$1,611,612.16	\$2,381,100.86	\$1,223,054.81	\$369,928.25	\$199,122.96	\$0.00	\$45,148.80	\$3,780,068.01
d. REIMBURSABLE EXPENSES (Not to Exceed)								
24" x 36" Black/White plans	\$/Unit	Quantity	Cost					
24" x 36" Black/White plans	\$0.14	0	\$0.00					
11 X 17 Copies	\$0.30	0	\$0.00					
8.5" x 11" Copies	\$0.15	0	\$0.00					
Mileage	\$0.63	60	\$37.50					
Postage	\$10.00	0	\$0.00					
Counter Service	\$16.00	0	\$0.00					
Total			\$37.50					
Total Terracon Amount			\$37.50					
Total			\$38,695.78					

**City of Jacksonville
Liberty Street Marina
Coastal Engineering Design Support and Flushing Study
INTERA Incorporated
April 2021
Revised November 2022**

Problem Understanding

The City of Jacksonville would like to construct a marina in place of the old courthouse parking lot located near Coastline Drive and Liberty Street along the St. Johns River. HDR needs some coastal engineering support to further the conceptual design developed by the City. For environmental permitting, HDR also needs a flushing study to ensure the basin exhibits adequate mixing and circulation.

Assumptions

1. HDR will provide INTERA with the following information:
 - a. Land XML, ASCII XYZ (text), and PDF files of the latest available bathymetric survey of the riverbed and inside the basin;
 - b. Proposed dredging plan in Land XML, ASCII XYZ (text), and PDF formats;
 - c. The return periods for the events of interest; and
 - d. The maximum allowable wave heights inside the basin under different design conditions.
2. INTERA cannot guarantee this work will result in receipt of environmental permits from the Florida Department of Environmental Protection (FDEP) and U.S. Army Corps of Engineers (USACE).
3. This scope excludes any in-person meetings.

Scope of Work

Task 1 Coastal Engineering Design Support

INTERA will utilize an existing ADCIRC hydrodynamic model of the area that extends from the mouth of the St. Johns River to near Palatka to develop wave and current conditions at the site. We will utilize published FDEP storm surge hydrographs as model boundary conditions to determine currents at the site for five different return period events. Additionally, we will utilize the same model grid to determine the wave heights at the site for five different return period wind speeds with SWAN. We will obtain wind speeds from American Society of Civil Engineers 7-16. Note that we will not make any changes to the model grid for this phase of the project.

HDR indicates that the "A Dock" denoted in the City's RFQ may consist of a floating or fixed structure. We will provide an opinion regarding incorporating wave attenuation into this dock and if needed, provide the dimensions of the wave attenuator (i.e., vertical wave barrier) needed based on a maximum allowable wave height inside the basin provided by HDR. The presence of curtain walls in the area suggests a vertical wave barrier may prove necessary. In addition to its opinion, INTERA will calculate wave forces on the barrier.

INTERA will also determine scour at dock pilings. Scour assessments may follow the Florida Department of Transportation's Bridge Scour Manual and/or U.S. Army Corps of Engineers Coastal Engineering Manual.

We will document our assumptions, methods, and results in a brief letter report. The report will include figures showing wave height and current patterns inside the basin for the five different return period events. We will submit a draft report in PDF format to HDR for review and comment. Upon receipt of comments, we will incorporate the comments to the extent practical and submit a signed and sealed final letter report in PDF format.

Task 2 Flushing Study

Regulatory agencies generally permit a project if the site and surrounding water bodies exhibit sufficient flushing. To comply with the guidelines outlined in the State of Florida's Environmental Resource Permit Applicant Handbook, Volume I (General and Environmental), the concentration of contaminants introduced to the system must fall 90% within four days and must not amass in adjacent water bodies for extended periods. To address these concerns, INTERA will utilize two-dimensional, finite element models to determine the flow characteristics of the basin and pollutant transport and diffusion within the basin.

From INTERA's existing, calibrated ADCIRC model utilized for numerous area projects, we will develop an RMA-2 model, a two-dimensional, transient, depth-averaged, finite-element, hydrodynamic model to describe the basin's tidal currents. RMA-2 will work in concert with the water quality transport model, RMA-4, which simulates depth averaged advection-diffusion processes by applying the two-dimensional depth average hydrodynamic solutions from RMA-2. Note the USACE supports both models. Combined, these two models — RMA-2 and RMA-4 — will provide the tools necessary to establish tidal flushing characteristics in the proposed basin. RMA-2 model calibration simulations will apply two boundary conditions — tidal time series supplied at model's river north and south boundaries derived from the existing ADCIRC model. Calibration will occur through iterative adjustments of model parameters until predicted water surface elevations approach NOAA-predicted values or closely match ADCIRC model results. The results from the RMA-2 hydrodynamic model will provide the input required for the pollutant transport model. Results from the pollutant transport model (RMA-4) will describe the flushing characteristics of the proposed basin.

In lieu of the above approach, INTERA may utilize AdH, a two-dimensional, finite-element model that can simulate both tidal hydraulics as well as conservative constituents like dye clouds, which are useful in flushing studies.

The residence time estimate (i.e., the time required for the constituent to reach 10% of its initial concentration) obtained during this study represents the time required for removal of a conservative pollutant from the proposed basin. Should the numerical modeling show that tidal flushing of the basin is insufficient to achieve the target mixing, INTERA will also investigate sizing of the marsh area currently proposed (to increase the tidal prism) as well as the additional effect of wind on water circulation. We will utilize an empirical method, such as that developed by Christensen (1989), to assess the residence times based on monthly wind statistics and conservative tidal flushing characteristics.

We will document our assumptions, methods, and results in a brief report suitable for submitting to the environmental permitting agencies. We will submit a draft report in PDF format to HDR for review and comment. Upon receipt of comments, we will incorporate the comments to the extent practical and submit a signed and sealed final report in PDF format.

Finally, one INTERA engineer will visit the site to assess water quality conditions with particular emphasis on evidence of possible stagnation areas near the project area.

Deliverables

Coastal engineering design support letter – Draft and final reports in PDF format

Flushing study – Draft and final reports in PDF format

Fee

INTERA will perform the work for a fixed fee of \$47,545.20.

INTERA Incorporated
Cost Summary by Task
COJ Liberty St. Marina

TASK 1: Coastal Engineering Design Support

<i>Labor</i>	Hours	Billing Rate (\$/hr)	Cost (\$)	Task Totals
Principal Engineer	2.0	252.12	504.23	
Project Manager	6.0	214.48	1,286.89	
Sr. Design Engineer	58.0	214.48	12,439.97	
Total Man-hours	66.0			
Labor Cost				14,231.10
Total Task 1				\$ 14,231.10

TASK 2: Flushing Study

<i>Labor</i>	Hours	Billing Rate (\$/hr)	Cost (\$)	Task Totals
Principal Engineer	4.0	252.12	1,008.47	
Project Manager	20.0	214.48	4,289.65	
Sr. Design Engineer	60.0	214.48	12,868.94	
Design Engineer	80.0	189.08	15,126.42	
Total Man-hours	164.0			
Labor Cost				33,293.48
<i>Non-Labor</i>	Units	Unit Cost (\$)	Cost (\$)	
R/T mileage from office to site	33.0	0.625	20.63	
Total Non-Labor Cost				20.63
Total Task 2				\$ 33,314.10

Project Total \$ 47,545.20



December 19, 2022

Mr. Craig McGillawee, PE, P.Eng.
 HDR Engineering, Inc.
 76 S Laura Street, Suite 1600
 Jacksonville, Florida 32202

Subject: Proposal for Geotechnical Engineering and Environmental Services
 COJ Liberty Street Marina & Market Street / Coastline Drive Bulkhead
 Jacksonville, Florida
 MAE Proposal No. 018920.1A

Dear Mr. McGillawee:

MESKEL & ASSOCIATES ENGINEERING, PLLC (MAE) is pleased to present this proposal to provide the geotechnical exploration and engineering services for the subject project. This proposal was requested by you via electronic correspondence on November 17, 2022. This correspondence included a information detailing the proposed project elements associated with Liberty Street Marina and docks, as well as the bulkhead replacement along Courthouse Drive and Market Street. This proposal includes a geotechnical exploration and engineering analysis for the marina elements only. The bulkhead segments are approximately 750 LF and are being performed as part of a separate scope of services.

GEOTECHNICAL EXPLORATION & ENGINEERING SERVICES

The objective of the geotechnical exploration is to provide site and subsurface information to evaluate the subsurface conditions for the proposed construction. Based on the provided information, the following table summarizes the requested scope of services.

	Test Location	Test No. & Type	Test Depth ft below existing ground/mudline
Marina	Pump Station - Land Borings	1 SPT Boring	40 ¹
	Docks & Office - Water Borings (inland)	3 SPT Borings ³	65 ⁴
	Docks - Water Borings (near the river)	3 SPT Borings ³	100 ⁵

1. The land boring is intended for the future pump station.
2. The pump station boring is located near the corner of Liberty Street and Courthouse Drive.
3. The Marina scope should include 12 water borings; however 6 water borings are included in the COJ Northbank Bulkhead – Market St. and Courthouse St. Proposal (No. 029922, dated August 16, 2022). Therefore, this proposal includes the remaining 6 borings for the Marina.
4. The test depth for the inland dock borings is 65 feet (5 feet from barge deck to water line, 30 feet of water line to mudline). Boring termination elevation will be approximately -100 feet.
5. The test depth for the dock borings near the river is 100 feet (5 feet from barge deck to water line, 45 feet from water line to mudline). Boring termination elevation will be approximately -150 feet which is consistent with the borings performed for the Coastline Drive bulkhead project completed in 2017.

The site appears to be easily accessible with our truck-mounted drilling equipment operating on a spud barge. We will locate the borings using our hand-held GPS equipment, accurate to within 3 meters (+/- 10 feet), as requested.

In accordance with Florida law, we will attempt to locate existing underground utilities at the site by utilizing the Sunshine State One-Call (SSOC) system. Any private utilities not included in the SSOC system will need to be located by the Owner. It should be noted that utility locate services require 10 business days for all utility locate requests within a body of water. All SPT borings will be performed in general accordance with ASTM D1586 procedures.

Once the SPT borings are completed, they will be backfilled with grout per St. Johns River Water Management District guidelines. We will take all reasonable precautions to prevent damage to the existing bulkhead. The recovered soil samples will be described in the field by the field crew. The field logs and samples will be delivered to our laboratory, where the logs will be reviewed, and the samples will be classified, by a geotechnical engineer in general accordance with ASTM D2488.

While considering our approach to our field exploration for this project, we reviewed demolition survey provided in the RFP and final boring locations may be adjusted to avoid potential underground conflicts. Since the bathymetric survey does not cover the entire project area, it is possible that the water depth and top of rock (elevation of mudline and elevation of top of limestone formation, respectively) may be deeper than anticipated due to ship building in the area of the project in the mid-20th century.

Due to the depth of water (30 feet or greater) and the likelihood of strong currents in this area of the St. Johns River, we will utilize a spud barge (approximately 45 feet wide by 120 feet long) to serve as a safe working platform for our drilling operation. The advantage of this spud barge is that it will create a safe working environment by providing adequate clearance from wake generated by large barges pushed by tugboats, ships or boats and providing stability and protection from the strong current.

Prior to mobilization, we will ensure a Notice-to-Local-Mariners is broadcast to ensure all mariners are aware of our work outside of the navigable channel of the St. Johns River. Once boring locations are confirmed, we will ascertain proposed work zones are outside of the channel, a United States Coast Guard permit is not required.

If unusual or unanticipated soil conditions are encountered during drilling prior to or at the anticipated termination depths, we will contact HDR Engineering immediately to discuss the matter. Rock coring and subsequent laboratory testing on rock cores will not be performed unless HDR Engineering wishes to include these services prior to our mobilization. We can provide unit pricing for this service. We will not explore depths beyond our scope of services without the consent of the HDR Engineering.

Laboratory classification and soil index property tests will be performed in general accordance with ASTM procedures for each applicable test as necessary on selected soil samples to confirm the soil classification and provide engineering characteristics to estimate compressibility.

A geotechnical engineer, licensed in the State of Florida, will direct the geotechnical exploration, and provide an engineering evaluation of the subsurface conditions encountered at the boring locations. The results of the exploration and engineering evaluation will be documented in a report that will include the following:

- Our understanding of the planned construction and general description of the project;
- A boring location plan detailing the location of each boring and type of equipment used;

- Field exploration procedures and soil sampling (and rock coring, if requested) methods used;
- Graphical representation in profile view of our boring logs and stratification which will detail the number of borings performed, description and thickness of each soil layer, any fluid loss(es) during drilling, and SPT-N values at each sample interval;
- The laboratory test procedures performed, and the results obtained;
- Recommendations for engineering design parameters for deep foundations such as axial (compressive and tensile) capacities;
- Recommendations for engineering design parameters to assist with lateral response analysis (using L-Pile or other similar software to be performed by HDR);
- Recommendations on the installation of the deep foundations with respect to subsoil conditions encountered;
- Recommendations for shallow foundation design of the pump facility;
- Recommendations for suitable backfill material for upland areas based on usage (e.g. grassy areas, paved, paver sidewalks, etc.) and possible suitability for reuse of existing site materials for backfill above and below water table, or if imported fill would be required; and
- Recommendations for site preparation and materials testing required during earthwork construction.

ENVIRONMENTAL SAMPLING SERVICES

This scope of services is included in the Marina scope and has been prepared based on testing requirements provided by Jacksonville Port Authority (JPA).

We understand that dredging is planned for the proposed Liberty Street Marina to a depth of 12 feet below Mean Low Water elevation. Dredged material is proposed to be disposed of at the JPA's dredge spoils facility. However, the JPA requires that sediment samples be collected from the proposed dredge basin for chemical testing prior to their approval to receive the dredge spoils.

Our testing program will consist of sampling and analysis of sediment collected at three locations within the proposed dredge area using vibracore sampling equipment. We will utilize a 32-foot research vessel to operate as the vibracore sampling platform for this effort. The vessel is equipped with all required U.S. Coast Guard (USCG) safety gear and will be operated by a USCG-certified Captain. The Captain will be accompanied by three additional crew members. A Trimble Differential Global Positioning System (sub-meter accurate) interfaced with HYPACK will be utilized for horizontal positioning, and a Furuno fathometer, verified by lead line, will be utilized to determine water depths.

During vibracore sampling activities, the vessel will be maneuvered to the desired sample location using coordinates provided in the SOW. Once on station, the vessel will be immobilized using a triple point anchor system. When the vessel is immobilized, the coordinates at the vessel locations will be checked against the desired sample coordinates to ensure accurate vessel placement.

The vibracore system will then be deployed from the vessel and consists of a generator with a mechanical vibrator attached via cable to a three-inch diameter, galvanized sample barrel. The sample barrel is lowered to the sediment surface through a moonpool in the deck of the vessel by attaching lengths of drill stem. The vibracore machine is then turned on and the sample barrel can penetrate until it reaches the required penetration depth or refusal. Vibracore penetration will be monitored from the deck to

determine the rate of penetration. The sample barrel is then retrieved using an electric winch. Once the sample is on deck, the core is measured, cut, capped, and labeled. Minimum acceptable core recovery is 85%. If refusal is met before reaching project depth, and if the material at the base of the core is not limestone, carbonate-cemented clastic sediments, or indurated silt/clay, then we will make 2 additional attempts to achieve the required penetration depth.

Six sediment samples from each of the three vibracore boring locations will be collected for predisposal analysis as required by the JPA. JPA requires that sediment samples be representative of the material to be removed therefore, composite sediment samples will be collected using a ponar grab sampler. One sample from each vibracore barrel will be composited on-site from the entire length of the vibracore sediment sample. Five additional grab sediment samples will be collected at 2-foot intervals from each vibracore sample. The sediment samples will be collected in laboratory provided containers, secured on wet ice and transported to PACE Environmental Laboratories in Ormond Beach, Florida. PACE is a NELAP-certified laboratory, Number E82502.

The composite sediment samples will be analyzed for the presence of the 8-RCRA listed metals (arsenic, barium, cadmium, chromium, lead, mercury, selenium, and silver) by EPA Method 6010 and EPA Method 7471, Polycyclic Aromatic Hydrocarbons (PAHs) by EPA Method 8270, Polychlorinated Biphenyls (PCBs) by EPA Method 8082 and Total Recoverable Petroleum Hydrocarbons (TRPH) by FL-PRO. The grab samples will be laboratory prepped and place on hold until results of the composite samples are received and reviewed. If any Constituent of Concern (COC) are detected in the composite samples, above clean up target levels, then all applicable grab intervals sample will be analysis accordingly for the same parameters listed above.

A report that will present all data in tables and figures as necessary will be prepared once analytical testing has been completed. The data report will include a description of the methods used for the collection, handling, storage and analysis of all samples. Monitoring reports for all sample collection activities will be included in the data report and will show time and date of sample collection, water temperature, depth of water, depth of samples, weather conditions, tidal stage, and flow. A copy of all analytical reports will be included along with laboratory quality control procedures. Furthermore, a separate letter report will be prepared to transmit the predisposal analytical data to the JPA for their review.

COMPENSATION

Based on the scope of the services outlined above, we propose to complete our work for the estimated fee shown in the table below.

DESCRIPTION OF SERVICE	ESTIMATED FEE
MARINA - GEOTECHNICAL EXPLORATION & ENGINEERING SERVICES	
Field Exploration (Land and Water Borings)	\$ 44,937.50
Laboratory Testing	\$ 5,750.00
Professional and Technical Services	\$ 30,953.47
Spud Barge (daily rate, tug service, work boat)	\$ 61,800.00
Contamination Screening of Soil Cuttings/Containers	\$ 3,000.00
GEOTECHNICAL TOTAL:	\$ 146,440.97
ENVIRONMENTAL SAMPLING SERVICES	

DESCRIPTION OF SERVICE	ESTIMATED FEE
Field Exploration (Vibracore Testing)	\$ 19,500.00
Laboratory Testing	\$ 8,300.00
Analysis and Reporting	\$ 8,421.44
ENVIRONMENTAL TOTAL:	\$ 36,221.44
MARINA SCOPE OF SERVICES - TOTAL ESTIMATED FEES:	\$ 182,662.41
BARGE & DRILL RIG MOBILIZATION FEE ¹:	\$ 21,200.00

1. The barge and drill rig mobilization fee will NOT be included in the fee estimate if this Marina Scope of Services are authorized concurrently with the services associated with the COJ Northbank Bulkhead – Market St. & Courthouse Dr. Proposal (No. 029922 dated August 16, 2022).

The fees above include submittal of an electronic signed and sealed report. We will contact you immediately if we encounter subsurface conditions that could require the borings to be advanced to deeper depths, and/or if additional engineering analysis/evaluation outside the scope of this proposal is necessary.

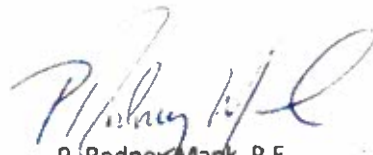
Once authorization is received, a utility locate request will be submitted. We will mobilize our equipment to the site within one week once the utilities have been located and marked, which is 10 working days after the request is made, and after the Owner has approved our field exploration plan. We anticipate the field work will take 6 to 8 weeks to complete. Verbal results can be provided within 2 to 3 days after completion of the field work. Laboratory testing will take up to two weeks to complete depending on the amount of lab testing assigned. We plan to submit our engineering report within 4 to 5 weeks following completion of the field exploration and laboratory testing programs.

We appreciate this opportunity to provide this proposal for your project. If you have any questions concerning this proposal, or if we can serve you in any other way, please contact me.

Sincerely,
MESKEL & ASSOCIATES ENGINEERING, PLLC



Brett Harbison, P.E.
 Director, Geotechnical Services



P. Rodney Mark, P.E.
 Principal Engineer

Attachments: Appendix A – Estimated Fee – Marina Scope of Services Only
 Appendix B – Proposed Boring Location Plan
 Appendix C – MAE Proposal 029922 – COJ Northbank Bulkhead-Market St/Courthouse Drive (For Information Purposes Only)

Distribution: Mr. Craig McGillawee, P.E. / HDR Engineering

One e-mail copy

PROPOSAL AUTHORIZATION
For Geotechnical Services
COJ Liberty Street Marina & Market Street / Coastline Drive Bulkhead
Jacksonville, Florida
MAE Proposal No. 018920.1A

Billing Information:

Company Name: _____

Attention: _____

Company Address: _____

Phone No.: _____ Email: _____

Project Contact Name:
(if different than above) _____

Additional Reports: Please List Below Any Additional Parties To Receive Reports.

1. _____

No. of Reports Required: _____

2. _____

No. of Reports Required: _____

NOTE: Our fee includes submittal of an electronic copy for each report. If bound paper copies are requested, the client will be charged \$50 for each additional copy.

MAE invoices should be received by you by the _____ of each month (date required for your processing)

The Client representative named below has read the General Conditions that are attached and made a part of this proposal, and agrees to be bound to the terms of the General Conditions.

Name: _____ Title: _____

Signature: _____ Date: _____

PROPOSAL DOCUMENT GENERAL CONDITIONS

Payment – Payment shall be due within 30 days after date of invoice

Insurance – Meskel & Associates Engineering (MAE) maintains Commercial General Liability with limits of \$1,000,000 – per occurrence, \$2,000,000 general aggregate, \$2,000,000 products and completed operations aggregate. A certificate of insurance can be provided at your request evidencing such coverage. All subcontractors to MAE maintain Workers' Compensation, Employer's Liability with limits of \$1,000,000 bodily injury by accident – each accident, \$1,000,000 bodily injury by disease – each employee, \$1,000,000 bodily injury by disease – policy limit. Workers Compensation coverage is in accordance with the Workers Compensation Law for the State of Florida.

Professional Liability: MAE maintains Professional Liability with limits of \$2,000,000 each claim and \$3,000,000 aggregate. A certificate of insurance can be provided at your request evidencing such coverage.

Right-of-Entry – Unless otherwise agreed, Client will furnish right of entry on the property for MAE to make the planned borings, surveys, and/or exploration. MAE will take reasonable precautions to minimize damage to the property caused by its equipment and sampling procedures, but the cost of restoration or damage which may result from the planned operations is not included in the contracted amount.

Legal Jurisdiction – The parties agree that any actions brought to enforce any provision of this Agreement shall only be brought in a court of competent jurisdiction located in Jacksonville, Duval County, Florida

Damage to Existing Man-made Objects – It shall be the responsibility of the Owner or his duly authorized representative to disclose the presence and accurate location of all hidden or obscure man-made objects relative to field tests, sampling, or boring locations. When cautioned, advised or given data in writing that reveal the presence or potential presence of underground or overhead obstructions, such as utilities, MAE will give special instructions to its field personnel. As evidenced by your acceptance of this proposal, Client agrees to indemnify and save harmless MAE from all claims, suits, losses, personal injuries, death and property liability resulting from unusual subsurface conditions or damages to subsurface structures, owned by Client or third parties, occurring in the performance of the proposed work, whose presence and exact locations were not revealed to MAE in writing, and to reimburse MAE for expenses in connection with any such claims or suits, including reasonable attorney's fees.

Limitation of Responsibility – Client hereby agrees to the fullest extent permitted by law the Consultant's total liability to Client for any and all injuries, claims, losses, expenses or damages whatsoever arising out of or in any way relating to the project, the site, or this Agreement from any cause or causes including but not limited to the Consultant's negligence, errors, omissions, strict liability, breach of contract, or breach of warranty shall not exceed the greater of the total amount paid by the Client for the services of the Consultant under this contract or \$50,000.00, whichever is greater.

Client and the Consultant agree that to the fullest extent permitted by law the Consultant shall not be liable to Client for any special, indirect or consequential damages whatsoever, whether caused by the Consultant's negligence, errors, omissions, strict liability, breach of contract, breach of warranty or other cause or causes whatsoever.

To the fullest extent permitted by law, Client agrees to defend, indemnify, and hold Consultant, its agents, subcontractors, and employees harmless from and against any and all claims, defense costs, including attorneys' fees, damages, and other liabilities arising out of or in any way related to Consultant's reports or recommendations concerning this Agreement, Consultant's presence on the project property, or the presence, release, or threatened release of asbestos, hazardous substances, or pollutants on or from the project property; provided that Client shall not indemnify Consultant against liability for damages to the extent caused by the negligence or intentional misconduct of Consultant, its agents, subcontractors, or employees

Use of Documents – All documents, including but not limited to drawings, specifications, reports, and data or programs stored electronically, prepared by the Consultant are related exclusively to the services described in this Agreement, and may be used only if the Client has satisfied all of its obligations under this Agreement. They are not intended or represented to be suitable for use, partial use or reuse by the Client or others on extensions of this project or on any other project. Any modifications made by the Client to any of the Consultant's documents, or any use, partial use or reuse of the documents without written authorization or adaptation by the Consultant will be at the Client's sole risk and without liability to the Consultant, and the Client shall indemnify, defend and hold the Consultant harmless from all claims, damages, losses and expenses, including but not limited to attorneys' fees, resulting therefrom. The Consultant's electronic files and source code

developed in the development of application code remain the property of the Consultant and shall be provided to the Client only if expressly provided for in this Agreement. Any electronic files not containing an electronic seal are provided only for the convenience of the Client, and use of them is at the Client's sole risk. In the case of any defects in the electronic files or any discrepancies between them and the hardcopy of the documents prepared by the Consultant, the hardcopy shall govern. Because data stored in electronic media format can deteriorate or be modified without the Consultant's authorization, the Client has 60 days to perform acceptance tests, after which it shall be deemed to have accepted the data.

PURSUANT TO FLORIDA STATUTES SECTION 558.0035 (2013) AN INDIVIDUAL EMPLOYEE OR AGENT OF MAE MAY NOT BE HELD INDIVIDUALLY LIABLE FOR NEGLIGENCE.

Sampling or Testing Location – Unless specifically stated to the contrary, the fees included in this proposal do not include costs associated with professional land surveying of the site or the accurate horizontal and vertical locations of tests. Field tests or boring locations described in our report or shown on our sketches are based on specific information furnished to us by others or estimates made in the field by our technicians. Such dimensions, depths or elevations should be considered as approximations unless otherwise stated in the report.

Sample Handling and Retention – Generally test samples or specimens are consumed and/or substantially altered during the conduct of tests and MAE, at its sole discretion, will dispose (subject to the following) of any remaining residue immediately upon completion of test unless required in writing by the Client to store or otherwise handle the samples. (a) NON HAZARDOUS SAMPLES: At Client's written request, MAE will store test samples and specimens, or the residue thereof for ninety (90) days after submission of MAE's report to Client free of storage charges. After the initial 90 days and upon written request, MAE will store test specimens or samples for a mutually acceptable storage charge and period of time. (b) HAZARDOUS OR POTENTIALLY HAZARDOUS SAMPLES: In the event that samples contain substances or constituents hazardous or detrimental to human health, safety or the environment as defined by federal, state or local statutes, regulations, or ordinances ("Hazardous Substances" and "Hazardous Constituents", respectively), MAE will, after completion of testing and at Client's expense: (i) return such samples to Client; (ii) using a manifest signed by Client as generator, will have such samples transported to a location selected by Client for final disposal. Client agrees to pay all costs associated with the storage, transport, and disposal of such samples. Client recognizes and agrees that MAE is acting as a Bailee and at no time does MAE assume title of said waste.

Discovery of Unanticipated Hazardous Materials – Hazardous materials or certain types of hazardous materials may exist at a site where there is no reason to believe they could or should be present. MAE and Client agree that the discovery of unanticipated hazardous materials constitutes a changed condition mandating a renegotiation of the scope of work or termination of services. MAE and Client also agree that the discovery of unanticipated hazardous materials may make it necessary for MAE to take immediate measures to protect health and safety. MAE agrees to notify Client as soon as practicable should unanticipated hazardous materials or suspected hazardous materials be encountered. Client encourages MAE to take any and all measures that, in MAE's professional opinion, are justified to preserve and protect the health and safety of MAE's personnel and the public. Client agrees to compensate MAE for the additional cost of working to protect employees' and the public's health and safety. In addition, Client waives any claim against MAE, and agrees to defend, indemnify and save MAE harmless from any claim or liability for injury or loss arising from MAE's discovery of unanticipated hazardous materials or suspected hazardous materials. Client also agrees to compensate MAE for any time spent and expenses incurred by MAE in defense of any such claim, with such compensation to be based upon MAE's prevailing fee schedule and expense reimbursement policy relative to recovery of direct project costs.

Force Majeure – MAE shall not be held responsible for any delay or failure in performance of any part of this Agreement to the extent such delay or failure is caused by fire, flood, explosion, war, strike, embargo, government requirement, civil or military authority, acts of God, act or omission of subcontractors, carriers, client or other similar causes beyond its control.

Appendix A

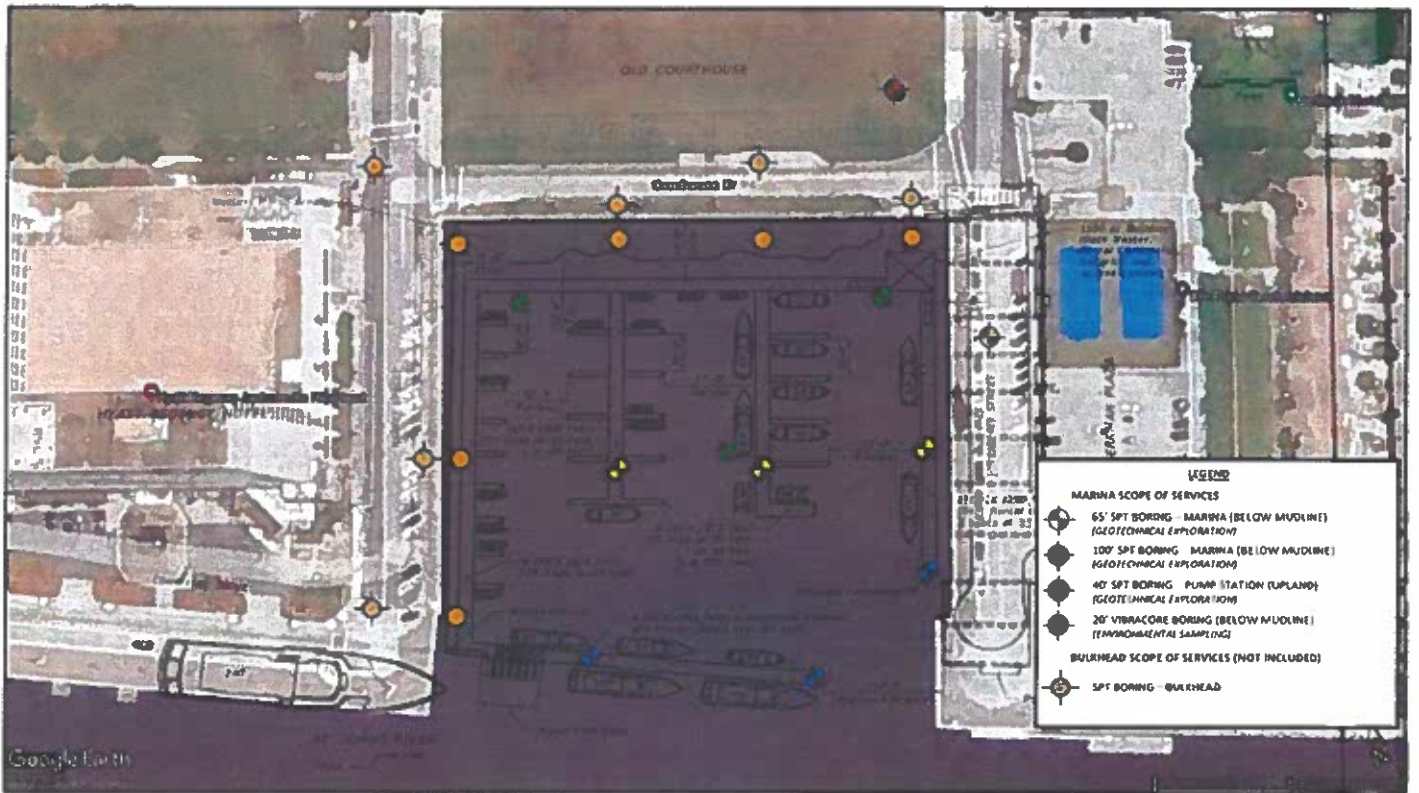
PROJECT FEE SUMMARY

PART I - GENERAL				
1. Project Liberty Street Marina & Market St./Courthouse Dr. Bulkhead Segments (GEO TECHNICAL)		2. Project Number		
3. Name of Contractor Meskel & Associates Engineering, PLLC		4. Date of Proposal 12/19/2022		
PART II - LABOR RELATED COSTS				
5. DIRECT LABOR	Hourly Rate	Hours	TOTAL	
Branch Manager	\$ 70.30	40.00	\$2,812.00	
Chief Engineer	\$ 64.89	2.00	\$129.78	
Senior Engineer	\$ 60.58	\$2.00	\$3,150.16	
Staff Engineer, Registered	\$ 38.75	30.00	\$1,162.50	
Staff Engineer, non-Registered	\$ 28.13	10.00	\$281.30	
Lab Technician	\$ 22.35	4.00	\$89.40	
Sr. Field Technician 4+ years exp	\$ 28.58	40.00	\$1,143.20	
CAD Operator	\$ 28.00	20.00	\$560.00	
Clerical	\$ 25.75	2.00	\$51.50	
TOTAL DIRECT LABOR			\$9,379.84	
6. OVERHEAD (Combined Fringe Benefits & Administrative)		200.00%	\$18,759.68	
7. SUBTOTAL: Direct Labor + Overhead (Items 5 & 6)			\$28,139.52	
8. PROFIT 10%			\$2,813.95	
SALARY RELATED COSTS SUB-TOTAL			\$30,953.47	
PART III - OTHER COSTS				
9. MISCELLANEOUS DIRECT COSTS (Lump Sum)				
FIELD EXPLORATION (LAND BORINGS)				
Pickup Truck	\$ 250.00	1	\$250.00	
Mobilization of Crew & Eq. - Out of Street Right-Of-Way	\$ 600.00	0	\$0.00	
Soil Test Borings - On Land (ASTM D-1586) 0 to 30 feet	\$ 14.00	30	\$420.00	
Soil Test Borings - On Land (ASTM D-1586) 30 to 50 feet	\$ 16.50	10	\$165.00	
Soil Test Borings - On Land (ASTM D-1586) 50 to 100 feet	\$ 18.00	0	\$0.00	
Soil Test Borings - On Land (ASTM D-1586) 100 to 150 feet	\$ 23.50	0	\$0.00	
Auger Borings, per foot	\$ 13.00	0	\$0.00	
Wash Borings - On Land 0 to 100 feet	\$ 11.50	0	\$0.00	
Undisturbed Samples - On Land 0 to 50 feet	\$ 155.00	0	\$0.00	
Rock Coring - On Land 0 to 100 feet	\$ 55.00	0	\$0.00	
Additional Split Spoons - On Land 0 to 50 feet	\$ 40.00	6	\$240.00	
Additional Split Spoons - On Land 50 to 100 feet	\$ 45.00	0	\$0.00	
Maintenance-of-Traffic - Cones	\$ 2.00	100	\$200.00	
Setting 4" Casing - On Land 0 to 100 feet	\$ 11.00	40	\$440.00	
Difficult Drilling Through Rubble Fill (2-man crew), per hour	\$ 185.00	2	\$370.00	
Grouting Borings, per foot	\$ 8.00	40	\$320.00	
FIELD EXPLORATION (WATER BORINGS)				
Pickup Truck	\$ 250.00	10	\$2,500.00	
Mobilization of Crew & Eq. - Out of Street Right-Of-Way	\$ 600.00	0	\$0.00	
Soil Test Borings - On Land (ASTM D-1586) 0 to 30 feet	\$ 14.00	45	\$630.00	
Soil Test Borings - On Land (ASTM D-1586) 30 to 50 feet	\$ 16.50	300	\$4,950.00	
Soil Test Borings - On Land (ASTM D-1586) 50 to 100 feet	\$ 18.00	150	\$2,700.00	
Soil Test Borings - On Land (ASTM D-1586) 100 to 150 feet	\$ 23.50	0	\$0.00	
Auger Borings, per foot	\$ 13.00	0	\$0.00	
Wash Borings - On Land 0 to 100 feet	\$ 11.50	255	\$2,932.50	
Undisturbed Samples - On Land 0 to 50 feet	\$ 155.00	4	\$620.00	
Rock Coring - On Land 0 to 100 feet	\$ 55.00	0	\$0.00	
Additional Split Spoons - On Land 0 to 50 feet	\$ 40.00	9	\$360.00	
Additional Split Spoons - On Land 50 to 100 feet	\$ 45.00	60	\$2,700.00	
Additional Split Spoons - On Land 100 to 150 feet	\$ 50.00	30	\$1,500.00	
Maintenance-of-Traffic - Cones	\$ 2.00	0	\$0.00	
Setting 4" Casing - On Land 0 to 100 feet	\$ 11.00	540	\$5,940.00	
Setting 6" Casing - On Land 0 to 100 feet	\$ 19.00	300	\$5,700.00	
Difficult Drilling Through Rubble Fill (3-man crew), per hour	\$ 250.00	36	\$9,000.00	
Grouting Borings, per foot	\$ 8.00	750	\$6,000.00	
LABORATORY TESTING				
Natural Moisture Content, ea	\$ 16.00	70	\$1,120.00	
Percent Passing No. 200 Sieve, ea	\$ 45.00	50	\$2,250.00	
Organic Content, ea	\$ 40.00	20	\$800.00	
Liquid & Plastic Limits, ea	\$ 90.00	12	\$1,080.00	
Consolidation Tests, ea	\$ 550.00	0	\$0.00	
Corrosion Series Tests, ea	\$ 250.00	2	\$500.00	
* All rates are based on MAE rates in COJ Contract POA-71982-22 dated September 23, 2022				
MISCELLANEOUS DIRECT COSTS SUB-TOTAL			\$53,687.50	
10. SUBCONSULTANTS (Lump Sum)				
Hal Jones Contractor - Barge Daily Rate and Tug Service			\$61,800.00	
Hal Jones Contractor - Barge Daily Rate and Tug Service (Mobilization)		\$ 20000.00	\$0.00	
SUBCONSULTANTS SUB-TOTAL			\$61,800.00	
11. SUBCONTRACTS (Limiting Amount)				
SUBCONTRACTS (LA) SUB-TOTAL			\$0.00	
PART IV - SUMMARY				
TOTAL CONTRACT AMOUNT AND/OR LIMITING AMOUNT			\$146,440.97	

PROJECT FEE SUMMARY

PART I - GENERAL			
1. Project Liberty Street Marina & Market St./Courthouse Dr Bulkhead Segments (PHASE 1 - ENVIRONMENTAL)		2. Project Number	
3. Name of Contractor Meskel & Associates Engineering, PLLC		4. Date of Proposal 12/2/2022	
PART II - LABOR RELATED COSTS			
5. DIRECT LABOR	Hourly Rate	Hours	TOTAL
Branch Manager	\$ 70.30	-	\$0.00
Chief Engineer	\$ 64.89	-	\$0.00
Senior Engineer/Senior Geologist	\$ 60.58	40.00	\$2,423.20
Staff Engineer, Registered	\$ 38.75	-	\$0.00
Staff Engineer, non-Registered	\$ 28.13	-	\$0.00
Lab Technician	\$ 22.35	-	\$0.00
Sr. Field Technician 4+ years exp	\$ 28.58	-	\$0.00
CAD Operator	\$ 28.00	-	\$0.00
Clerical	\$ 25.75	5.00	\$128.75
TOTAL DIRECT LABOR			\$2,551.95
6. OVERHEAD (Combined Fringe Benefits & Administrative)		200.00%	\$5,103.90
7. SUBTOTAL: Direct Labor + Overhead (Items 5 & 6)			\$7,655.85
8. PROFIT 10%			\$765.59
SALARY RELATED COSTS SUB-TOTAL			\$8,421.44
PART III - OTHER COSTS			
9. MISCELLANEOUS DIRECT COSTS (Lump Sum)			
FIELD EXPLORATION (LAND BORINGS)			
Pickup Truck	\$ 250.00	0	\$0.00
Mobilization of Crew & Eq. - Out of Street Right-Of-Way	\$ 600.00	0	\$0.00
Soil Test Borings - On Land (ASTM D-1586) 0 to 30 feet	\$ 14.00	0	\$0.00
Soil Test Borings - On Land (ASTM D-1586) 30 to 50 feet	\$ 16.50	0	\$0.00
Soil Test Borings - On Land (ASTM D-1586) 50 to 100 feet	\$ 18.00	0	\$0.00
Soil Test Borings - On Land (ASTM D-1586) 100 to 150 feet	\$ 23.50	0	\$0.00
Auger Borings, per foot	\$ 13.00	0	\$0.00
Wash Borings - On Land 0 to 100 feet	\$ 11.50	0	\$0.00
Undisturbed Samples - On Land 0 to 50 feet	\$ 155.00	0	\$0.00
Rock Coring - On Land 0 to 100 feet	\$ 55.00	0	\$0.00
Additional Split Spoons - On Land 0 to 50 feet	\$ 40.00	0	\$0.00
Additional Split Spoons - On Land 50 to 100 feet	\$ 45.00	0	\$0.00
Maintenance-of-Traffic - Cones	\$ 2.00	0	\$0.00
Setting 4" Casing - On Land 0 to 100 feet	\$ 11.00	0	\$0.00
Difficult Drilling Through Rubble Fill (2-man crew), per hour	\$ 185.00	0	\$0.00
Grouting Borings, per foot	\$ 8.00	0	\$0.00
FIELD EXPLORATION (WATER BORINGS)			
Pickup Truck	\$ 250.00	0	\$0.00
Mobilization of Crew & Eq. - Out of Street Right-Of-Way	\$ 600.00	0	\$0.00
Soil Test Borings - On Land (ASTM D-1586) 0 to 30 feet	\$ 14.00	0	\$0.00
Soil Test Borings - On Land (ASTM D-1586) 30 to 50 feet	\$ 16.50	0	\$0.00
Soil Test Borings - On Land (ASTM D-1586) 50 to 100 feet	\$ 18.00	0	\$0.00
Soil Test Borings - On Land (ASTM D-1586) 100 to 150 feet	\$ 23.50	0	\$0.00
Auger Borings, per foot	\$ 13.00	0	\$0.00
Wash Borings - On Land 0 to 100 feet	\$ 11.50	0	\$0.00
Undisturbed Samples - On Land 0 to 50 feet	\$ 155.00	0	\$0.00
Rock Coring - On Land 0 to 100 feet	\$ 55.00	0	\$0.00
Additional Split Spoons - On Land 0 to 50 feet	\$ 40.00	0	\$0.00
Additional Split Spoons - On Land 50 to 100 feet	\$ 45.00	0	\$0.00
Additional Split Spoons - On Land 100 to 150 feet	\$ 50.00	0	\$0.00
Maintenance-of-Traffic - Cones	\$ 2.00	0	\$0.00
Setting 4" Casing - On Land 0 to 100 feet	\$ 11.00	0	\$0.00
Setting 6" Casing - On Land 0 to 100 feet	\$ 19.00	0	\$0.00
Difficult Drilling Through Rubble Fill (3-man crew), per hour	\$ 250.00	0	\$0.00
Grouting Borings, per foot	\$ 8.00	0	\$0.00
LABORATORY TESTING			
Natural Moisture Content, ea.	\$ 16.00	0	\$0.00
Percent Passing No. 200 Sieve, ea	\$ 45.00	0	\$0.00
Organic Content, ea	\$ 40.00	0	\$0.00
Liquid & Plastic Limits, ea	\$ 90.00	0	\$0.00
Consolidation Tests, ea	\$ 550.00	0	\$0.00
Corrosion Series Tests, ea	\$ 250.00	0	\$0.00
* All rates are based on MAE rates in COJ Contract POA-71982-22 dated September 23, 2022			
MISCELLANEOUS DIRECT COSTS SUB-TOTAL			\$0.00
10. SUBCONSULTANTS (Lump Sum)			
Vibracore Subcontractor-Athena Technologies			\$19,500.00
Lab Screening-PACE Analytical			\$8,300.00
SUBCONSULTANTS SUB-TOTAL			\$27,800.00
11. SUBCONTRACTS (Limiting Amount)			
SUBCONTRACTS (LA) SUB-TOTAL			\$0.00
PART IV - SUMMARY			
TOTAL CONTRACT AMOUNT AND/OR LIMITING AMOUNT			\$36,221.44

Appendix B



Project Manager	BB04
Drawn by	BB04
Checked by	BB04
Approved by	BB04

Project No.	018920
Scale	AS SHOWN
File Name	018920 BLP
Date	12/2/2022



3730 PHILIPS HIGHWAY • SUITE 200 • JACKSONVILLE, FLORIDA 32207
 PH (904) 519-4990 • FAX (904) 519-4992 • www.marshall-engineering.com

PROPOSED BORING LOCATION PLAN
 LIBERTY STREET MARINA & COURTHOUSE DR / MARKET ST. BULKHEAD
 JACKSONVILLE, FLORIDA

FIG NO.	1
---------	---

Appendix C



August 16, 2022

Mr. Al Curtis, P.E.
HDR Engineering, Inc.
76 S Laura Street, Suite 1600
Jacksonville, Florida 32202

Subject: Proposal for Geotechnical Exploration and Engineering Services
COJ Northbank Bulkhead Replacements – Market St. and Courthouse Dr. Segment
Jacksonville, Florida
MAE Proposal No. 029922

Dear Mr. Curtis:

MESKEL & ASSOCIATES ENGINEERING, PLLC (MAE) is pleased to present this proposal to provide the geotechnical exploration and engineering services for the subject project. This proposal was requested by you via electronic correspondence on August 9, 2022. This correspondence included a document that detailed the location of the Market Street and Courthouse Drive segment of bulkhead replacement (approximately 750 LF).

The objective of the geotechnical exploration is to provide site and subsurface information to evaluate the subsurface conditions for the proposed construction. Based on the provided information, the following table summarizes the requested scope of services.

Test Location	Test No. & Type	Test Depth ft below existing ground/mudline
Land Borings ¹	6 Standard Penetration Test (SPT) Borings ^{1,2}	75 ⁴
Water Borings	6 SPT Borings ^{2,3}	65 ⁴

1. Land borings will be approximately 10-feet to 50-feet from the existing bulkhead as requested by HDR.
2. The proposed boring locations are spaced on 120-foot centers based on the number of borings requested by HDR and the length of proposed sheet pile wall. Please refer to the attached Boring Location Plan showing the proposed boring locations.
3. Boring locations will avoid impacting the navigable channel of the St. Johns River.
4. The test depth from the barge deck is 100 feet (5 feet from barge deck to water line, 30 feet of water line to mudline). Boring termination elevation will be approximately -95 feet.

The site appears to be easily accessible with our truck-mounted drilling equipment operating on a spud barge. We will locate the borings using our hand-held GPS equipment, accurate to within 3 meters (+/- 10 feet), as requested.

In accordance with Florida law, we will attempt to locate existing underground utilities at the site by utilizing the Sunshine State One-Call (SSOC) system. Any private utilities not included in the SSOC system will need to be located by the Owner. It should be noted that utility locate services require 10 business days for all utility locate requests within a body of water. All SPT borings will be performed in general accordance with ASTM D1586 procedures.

Once the SPT borings are completed, they will be backfilled with grout per St. Johns River Water Management District guidelines. We will take all reasonable precautions to prevent damage to the existing docks, bulkhead, and ancillary structures. The recovered soil samples will be described in the field by the field crew. The field logs and samples will be delivered to our laboratory, where the logs will be reviewed, and the samples will be classified, by a geotechnical engineer in general accordance with ASTM D2488.

While considering our approach to our field exploration for this project, we reviewed historical images of the Northbank of the St. Johns River. Based on the photographs to the right and discussions with local marine bridge contractors familiar with driving piles in the St. Johns River, it is possible that the water depth and top of rock (elevation of mudline and elevation of top of limestone formation, respectively) may be deeper than anticipated due to ship building and wharf construction in the area of the project in the mid-20th century.

Due to the depth of water (approximately 30 to 35 feet) and the likelihood of strong currents in this area of the St. Johns River, we will utilize a spud barge (approximately 45 feet wide by 120 feet long) to serve as a safe working platform for our drilling operation. The advantage of this spud barge is that it will create a safe working environment by providing adequate clearance from wake generated by large barges pushed by tugboats, ships or boats and providing stability and protection from the strong current.

Prior to mobilization, we will ensure a Notice-to-Local-Mariners is broadcast to ensure all mariners are aware of our work outside of the navigable channel of the St. Johns River. Once boring locations are confirmed, we will ascertain proposed work zones are outside of the channel, a United States Coast Guard permit is not required.

If unusual or unanticipated soil conditions are encountered during drilling prior to or at the anticipated termination depths, we will contact HDR Engineering immediately to discuss the matter. Rock coring and



Proposed Market Street and Courthouse Drive Segment



Top: Northbank of the St. Johns River (circa 1942) with the Acosta Bridge in foreground (green arrow).

Bottom: Northbank with Acosta Bridge in foreground.



subsequent laboratory testing on rock cores will not be performed unless HDR Engineering wishes to include these services prior to our mobilization. We can provide unit pricing for this service. We will not explore to depths beyond our scope of services without the consent of the HDR Engineering.

Laboratory classification and soil index property tests will be performed in general accordance with ASTM procedures for each applicable test as necessary on selected soil samples to confirm the soil classification and provide engineering characteristics to estimate compressibility.

A geotechnical engineer, licensed in the State of Florida, will direct the geotechnical exploration, and provide an engineering evaluation of the subsurface conditions encountered at the boring locations. The results of the exploration and engineering evaluation will be documented in a report that will include the following:

- Our understanding of the planned construction and general description of the project;
- A boring location plan detailing the location of each boring and type of equipment used;
- Field exploration procedures and soil sampling (and rock coring, if requested) methods used;
- Graphical representation in profile view of our boring logs and stratification which will detail the number of borings performed, description and thickness of each soil layer, any fluid loss(es) during drilling, and SPT-N values at each sample interval;
- The laboratory test procedures performed, and the results obtained;
- Recommendations for engineering design parameters for sheet pile wall design;
- Recommendations for engineering design parameters to assist with lateral response analysis (using L-Pile or other similar software to be performed by HDR);
- Recommendations on the installation of the sheet piles with respect to subsoil conditions;
- Recommendations to assist with preliminary design and specification development (soil/grout bond strength(s), target soil layer(s)/elevations for bonded anchorage, and necessity/frequency of non-production and/or extended creep tests);
- Recommendations for suitable backfill material for upland areas based on usage (e.g. grassy areas, paved, paver sidewalks, etc.) and possible suitability for reuse of existing site materials for backfill above and below water table, or if imported fill would be required; and
- Recommendations for site preparation and materials testing required during earthwork construction.

Based on the scope of the services outlined above, we propose to complete our work for the estimated fee shown in the table below.

Description of Service	Estimated Fee
Field Exploration (Land and Water SPT Borings)	\$ 48,700.00
Laboratory Testing	\$ 4,582.00
Professional and Technical Services	\$ 35,260.17
Spud Barge (mobilization, tug service, work boat)	\$ 98,900.00
Total Estimated Fee:	\$ 187,442.17

The fees above include submittal of an electronic signed and sealed report. We will contact you immediately if we encounter subsurface conditions that could require the borings to be advanced to deeper depths, and/or if additional engineering analysis/evaluation outside the scope of this proposal is necessary.

Once authorization is received, a utility locate request will be submitted. We will mobilize our equipment to the site within one week once the utilities have been located and marked, which is 10 working days after the request is made, and after the Owner has approved our field exploration plan. We anticipate the field work will take 3 to 4 weeks to complete. Verbal results can be provided within 2 to 3 days after completion of the field work. Laboratory testing will take up to 1 to 2 weeks to complete depending on the amount of lab testing assigned. We plan to submit our engineering report within 4 weeks following completion of the field exploration and laboratory testing programs.

We appreciate this opportunity to provide this proposal for your project. If you have any questions concerning this proposal, or if we can serve you in any other way, please contact me.

Sincerely,

MESKEL & ASSOCIATES ENGINEERING, PLLC



Brett Harbison, P.E.
Director, Geotechnical Services

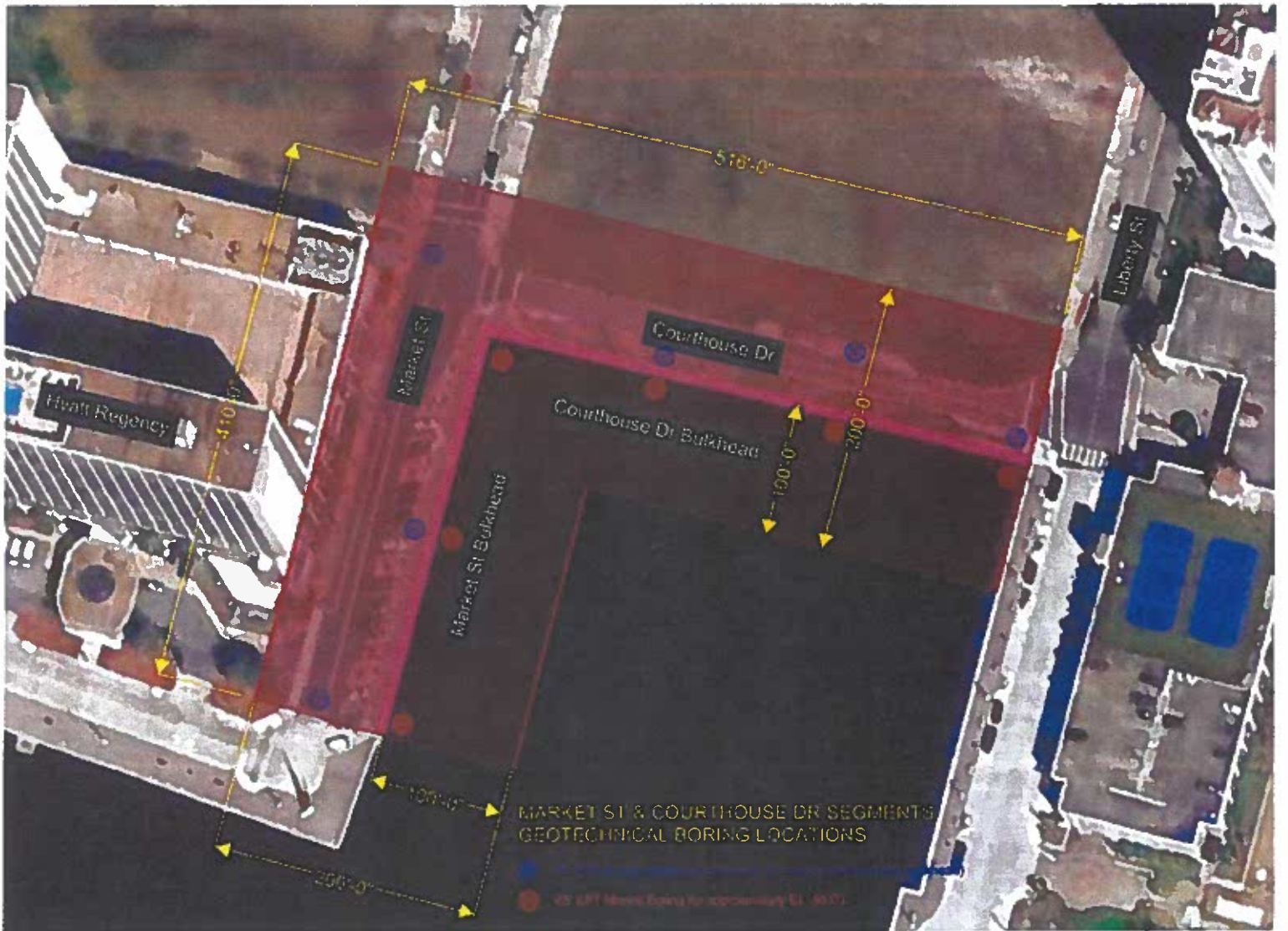


P. Rodney Mark, P.E.
Principal Engineer

Attachments: Appendix A – Estimated Fees, Staff Hours, and MAE Rates
Appendix B – Proposed Boring Location Plan

Distribution: Mr. Al Curtis, P.E. / HDR Engineering, Inc.

One e-mail copy





1200 Riverplace Blvd., Suite 600
Jacksonville, FL 32207

T: 904.543.0400
www.pondco.com

February 20, 2023

Craig McGillawee, PE. P. Eng.
Ports Section Manager
HDR
76 S. Laura St., Suite 1600
Jacksonville, FL 32202

**RE: P-4020: City of Jacksonville – Liberty Street Marina Project
Architectural and Engineering Services Proposal - Updated**

Craig:

We are excited about partnering with HDR to provide design services for the City of Jacksonville's Liberty Street Marina Project. Our proposal is based upon the scope of work as outlined below.

PROJECT UNDERSTANDING AND SCOPE:

We understand that the scope of this project is the design and construction of a new marina and harbormaster building as depicted in the attached conceptual site and building plans provided by the City of Jacksonville as part of the RFQ process. The marina is conceived to be for both private and public use and will also include a "water taxi" stop. In support of the marina a fueling station and pump out station are being considered. Pond will be a consultant to HDR, who will hold the primary contract with the City of Jacksonville. HDR will be primarily responsible for the Marina structures; floating and fixed piers, boat slips and the platform structure which will support the harbormaster building. Additionally, HDR will be responsible for miscellaneous paving and drainage associated with the marina. The project will not include LEED design or certification.

Pond's scope includes the following.

Harbormaster Building

Architectural and Engineering design of the harbormaster building. Engineering design includes Structural, Mechanical, Electrical, and Plumbing. Fire Protection is excluded, as the Harbormaster Building is not expected to be sprinklered. The structural and architectural design of the platform for the harbormaster building is excluded. As referenced above the platform is being designed by HDR.
Miscellaneous to be included: Non FDOT fencing, gates, and access control.

Utilities to Boat Slips

Engineering, design, and routing of utilities to boat slips. The utilities listed below are expected to be required. However, the utilities will be confirmed with the Owner during programming based on slip mix. Note that HDR will be responsible for "programming" the utilities required. Pond will be responsible for the engineering, design and documentation of the utilities.

Anticipated Utilities

Typical household power receptacles
Higher amperage receptacles for boats
Low voltage power for general lighting
Potable Water – hose bibb



Site Utilities

Engineering, design and routing of site utilities to serve the Harbormaster Building, floating & fixed piers, fueling station, and pump station within the project site. Limited upland development design is included for utility infrastructure for the sanitary lift station, backflow preventer, transformer, and fuel storage tanks. The location of all upland infrastructure by Pond is assumed to be within 100 feet of the existing bulkhead. If it is determined that the location of the upland infrastructure is required to be somewhere more distant, additional fees may be required to coordinate such a design. **Note that the extension of utilities to the project is presumed to be by others (COJ, JEA, TECO for example).** We will coordinate the connection of the project’s utilities with the incoming utilities provided and designed by others.

Fueling Station

Engineering and design of the fueling station. A separate fuel truck parking pad is assumed to be by others.

Pump Out Station

Engineering design and routing of a pump out station located within the marina.

Permitting

Permitting coordination with agencies is included in Pond’s scope of services.

- CoJ 10-set Review for upland development
- CoJ Building Plans Review for the Harbormaster House.
- DIA Downtown Development Review Board Review permit
- JEA for water, sewer, electrical services
- Other permits by HDR, or by the contractor.

PROJECT BUDGET:

We understand that the anticipated range of construction cost for the marina project is \$8,000,000.00 - \$10,000,000.00 and will be verified as the final program and scope is developed by the City of Jacksonville during the early design phases of the project.

PROJECT SCHEDULE

We understand that currently there is no deadline or firm schedule. Once the design team is under contract a schedule, agreeable to all parties, will be developed. Further, we understand that the City of Jacksonville intends to proceed with the project in two phases. **Phase 1** is expected to comprise a schematic (30%) site, marina, and harbormaster building design for the purpose of determining a conceptual cost estimate (by others) and confirmation of project scope to be included in **Phase 2**, which will be the completion of design and bidding documents, construction administration and project close-out.

MILESTONE PROJECT SCHEDULE

<u>MILESTONE</u>	<u>DURATION</u>
<u>PHASE 1</u>	
Program and Concept Verification	6 wks
Schematic Design	8 wks
<u>PHASE 2</u>	



Design Development	8 wks
Construction Documents	8 wks

SCOPE OF SERVICES:**PHASE 1:****Program & Concept Verification**

Attend (2) meetings led by HDR to review and confirm program and concept with the City of Jacksonville (Owner). Due to the simultaneous design and development of the adjacent Hardwick Ford on Bay project (by others) the (2) meetings are assumed to include design coordination where the two project's goals and needs are discussed and suitable locations of the marina upland infrastructure are identified and approved. If upland architectural elements are required for screening or disguising the infrastructure is required, this can be provided as an additional service.

Deliverables:

Conceptual Harbormaster building floor plan
Conceptual Site Utility Diagram

Schematic Design

Coordination and collaboration with HDR for development of 30% design based upon approved concept design.

Design Progress Meetings with Owner:

One-to-two owner review meetings to confirm fulfillment of program requirements and review the progress of the design.

Deliverables:**Harbormaster Building**

Preliminary code review
Floor Plan(s)
Roof Plan
Reflected Ceiling Plan(s)
Building Sections, as needed
Exterior Elevations
Structural Narrative
Mechanical, Electrical, Plumbing Narrative
Specifications Table of Contents

Utilities to Boat Slips

Narrative Description, note programming will be by HDR
Routing Plan

Site Utilities

Preliminary Site Utility Plan defining points of anticipated connections.

Fueling Station

Site Plan

Narrative Description, as needed.

Pump Out Station

Site Plan

Narrative Description, as needed.

Cost Estimate

Cost estimate by others.

PHASE 2:

Design Development (60%)

Pond will begin Design Development upon review and approval by HDR and the City of Jacksonville of the Schematic Design (30%) Submittal.

Design Progress Meetings with Owner:

One owner review meeting to confirm fulfillment of program requirements and review the progress of the design.

One owner review meeting for review and approval of finishes and colors related to the Harbormaster Building.

Services/Deliverables include:

Harbormaster Building

Code Analysis/Life Safety Plans

Floor Plans

Reflected Ceiling Plans

Roof Plan

Exterior Elevations

Typical Wall sections

Typical Details, as needed

Mechanical Plans and Typical Details

Electrical Plans and Typical Details

Plumbing Plans and Typical Details

Outline Specifications

Utilities to Boat Slips

Routing Plan

Typical details

Site Utilities

Site Plan

Typical Details

Fueling Station

Site Plan

Typical Details



Cost Estimate

Cost estimate by others

Construction Documentation (90%/100%)

Pond will begin Construction Documentation upon review and approval by HDR and the City of Jacksonville of the Design Development (60%) Submittal.

Services/Deliverables include:

Preparation of Construction/ Bid Documents suitable for bidding, permitting and construction:

Design/Construction Documentation Progress Meetings:

We do not anticipate an Owner meeting during Construction Documentation.

Harbormaster Building

Code Analysis/Life Safety Plans

Floor Plans

Reflected Ceiling Plans

Roof Plan

Exterior Elevations

Typical Wall sections

Door & Window Schedules

Typical & Unique Details, as needed

Mechanical Plans, Typical and Unique Details

Electrical Plans, Typical and Unique Details

Plumbing Plans, Typical and Unique Details

Specifications

Utilities to Boat Slips

Routing Plan

Typical and Unique details

Site Utilities

Site Plan

Typical and Unique Details

Fueling Station

Site Plan

Typical and Unique Details

Cost Estimate

By others

Bidding and Negotiation:

Excluded



Construction Administration:
Excluded

COMPENSATION & FORM OF CONTRACT:
BASIC SERVICES FEE:

We propose a lump sum fixed fee, including minor reimbursables, of **\$220,510.00** for full-service architectural and engineering services, as described herein. A separate Allowance for permit reviews and other regulatory fees associated with Pond's scope of work as defined above is an additional **\$22,500**. We propose to invoice for these services based upon the percent complete of each phase of service described below.

Payment Schedule:

<u>Description</u>	<u>Amount</u>
PHASE 1	
Schematic Design <i>Including Program & Concept Verification</i>	\$55,128.00
PHASE 1 TOTAL	\$55,128.00
PHASE 2	
Design Development	\$66,153.00
Construction Documents	\$99,230.00
PHASE 2 TOTAL	\$165,383.00
TOTAL - PHASES 1 & 2	\$220,510.00
Regulatory and Permit Fees (Allowance)	\$22,500.00
GRAND TOTAL	\$243,010.00

The form of contract shall be AIA Form C401-2017 Standard Form of Agreement Between Architect and Consultant.

ADDITIONAL SERVICES:

Additional services are services outside of the scope noted herein, or services that were not anticipated at the writing of this agreement, or are special services requested by the Owner. Should additional Services be required during this project, we will notify the Owner prior to commencing said work. Approved Additional services of our Consultants will be invoiced at 1.2 times our cost.

Additional Services:

None currently identified

Services Not Included:

Bidding and Negotiation



Construction Administration
 Environmental - Hazardous Materials Abatement
 Landscape Design
 Furniture Procurement
 Lighting Consultant
 Cost Estimating Consultant
 Acoustical Consultant
 Special Inspections
 LEED services

Attendance at Public Meetings
Owner meetings not stipulated in scope of services above, denoted as "Design Progress Meetings with Owner"

REIMBURSABLE EXPENSES:

Reimbursable Expenses are project related expenses that accrue over the course of design and construction phases of the project. We do not consider in-house small document copying, costs associated with e-mail correspondence or costs associated with maintaining our CAD software and systems as reimbursable expenses.

The following expenses are anticipated reimbursables for this project, and will be invoiced as incurred per completion of each phase of service at 1.2 times our cost:

- Printing/ mounting and material costs including drawings for presentations, meetings, contractor pricing, permitting, and discussion purposes.
- Out-of-town Travel

PERMITTING AND AGENCY FEES ALLOWANCE

- Fees for permitting reviews included are identified below for the portions of the project Pond is providing. It is assumed that others are responsible for the permitting costs associated with the docks over the water and the environmental permitting associated with the project:

○ CoJ 10-set Review Fee (Land Disturbance Permit)	\$1,000
○ CoJ Building Review for Harbormaster House Fee	\$8,000
○ DIA DDRB Fee	\$1,500
○ JEA Capacity Fee	<u>\$12,000</u>
ALLOWANCE	\$22,500

PAYMENT TERMS:

Professional services will be invoiced monthly in accordance with the status of the work. Payments are due 30 days from the invoice date and are considered past-due thereafter.

Please feel free to contact us at your convenience to discuss the terms of this proposal and any questions or concerns you may have. We are looking forward to working with you on this project.



Sincerely,

A handwritten signature in blue ink that reads "Stephen G. Harrill". The signature is fluid and cursive, with the first name being the most prominent.

Stephen G. Harrill, AIA
Vice President

Attachments:
Conceptual Site Plan

**EBO FORM 1
SCHEDULE OF SUBCONTRACTOR/SUBCONSULTANT PARTICIPATION**

Name of Proposer: HDR Engineering, Inc.

Project Title: Professional Engineering Services for Liberty Street Marina

Proposal Number: P-4-20 Total Base Proposal Amount (if applicable): \$941,375.03

***Please list all JSEBs first**

Full Company Name	JSEB Category (African-American, Women, Asian, Native American, Non-MBE or Hispanic)	Type of Work to be Performed	Total Contract Value or Percentage
Meskel & Associates Engineering, PLLC	Women	Geotechnical Engineering	22%
Terracon		Permitting	5%
Pond		Architecture, Buildings, Utilities and Permitting	26%
Intera		Coastal Engineering	5%

Attach additional list of subcontractors/sub-consultants as needed

CONSULTANT/SUBCONTRACTOR/SUPPLIER TOTAL VALUES	
African-American Participation Total	\$
Hispanic-American Participation Total	
Native-American Participation Total	
Asian-American Participation Total	
Woman Participation Total	\$203,862.41
Non-MBE Participation Total	\$737,512.62

The undersigned will enter into a formal Agreement with the JSEB Suppliers/Consultants/Subcontractors identified herein for work listed in this schedule conditioned upon execution of a contract with the City of Jacksonville. Under penalties of perjury I declare that I have read the foregoing conditions and instructions and the facts are true to the best of my knowledge and beliefs.

Signature of Proposer: *George McGregor* Title: Vice President Date: 03/07/2023

Print Name: George McGregor



City of Jacksonville, Florida

Lenny Curry, Mayor

Department of Public Works
Engineering & Construction Management Division
214 N. Hogan Street, 10th Floor
Jacksonville, FL 32202
(904) 255-8762
www.coj.net

ONE CITY. ONE JACKSONVILLE.

March 20, 2023

TO: Dustin Freeman, Chairman
Professional Services Evaluation Committee

THRU: Steven D. Long, Jr., P.E.
Director

FROM: Nikita L. Reed, P.E.
Public Works Project Manager

Michael Derbaum, P.E.
Professional Engineer

SUBJECT: P-50-22 Professional Design Services for Forest Trail Road Drainage Improvements

The subcommittee received Four (4) proposals for evaluation for the subject project and found all to be responsive, interested, qualified and available to provide the services required by the RFP.

The proposals were evaluated using the criteria outlined in the Purchasing Code as augmented by the RFP (see attached matrix).

Based on the above, the following firms listed alphabetically were determined to be the most qualified of those submitting proposals. The ranking of first, second, and third designates the order of qualification of these firms to perform the required services.

2. Adkinson Engineering, P.A.
1. Construction & Engineering Services Consultants, Inc.
3. Wright-Pierce, Inc.

We recommend that the above list be forwarded to the Mayor for final selection.

SDL/lw

Attachment: Scoring Matrix

cc: Lori West, Engineering and Construction Management



City of Jacksonville, Florida

Lenny Curry, Mayor

Department of Public Works
Engineering & Construction Management Division
214 N. Hogan Street, 10th Floor
Jacksonville, FL 32202
(904) 255-8762
www.coj.net

ONE CITY. ONE JACKSONVILLE.

March 29, 2023

TO: Dustin Freeman, Chairman
Professional Services Evaluation Committee

THRU: Steven D. Long, Jr., P.E. *Steve D. Long*
Director

FROM: Robin G. Smith, PE *R. G. Smith*
Chief, Engineering & Construction Management

Jonathan Page, P.E. *JP*
Public Works Construction Project Manager

SUBJECT: P-37-22 Construction Engineering and Inspection Services for 5 Riverfront and 3 Park Improvement Projects

The subcommittee received six (6) proposals for evaluation for the subject project and found it to be responsive, interested, qualified and available to provide the services required by the RFP.

The proposals were evaluated using the criteria outlined in the Purchasing Code as augmented by the RFP (see attached matrix).

Based on the above, the following firms listed alphabetically were determined to be the most qualified of those submitting proposals. The ranking of first, second, and third designates the order of qualification of these firms to perform the required services.

3. AE Engineering, Inc.
2. Construction & Engineering Services Consultants, Inc.
1. VIA Consulting Services, Inc.

We recommend that the above list be forwarded to the Mayor for final selection.

SDL/lw

Attachment: Scoring Matrix

cc: Lori West, Engineering and Construction Management



ONE CITY. ONE JACKSONVILLE.

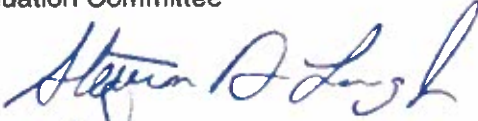
City of Jacksonville, Florida


Lenny Curry, Mayor

Department of Public Works
Engineering & Construction Management Division
214 N. Hogan Street, 10th Floor
Jacksonville, FL 32202
(904) 255-8762
www.coj.net

April 3, 2023

TO: Dustin Freeman, Chairperson
Professional Services Evaluation Committee

THRU: Steven D. Long, Jr., P. E.
Director 

FROM: Robin Smith, P. E., Chief
Engineering and Construction Management Division 

**RE: REQUEST FOR PERMISSION TO REVIEW PROPOSALS
P-47-22 CONSTRUCTION ENGINEERING AND INSPECTION SERVICES FOR
FOUR FIRE STATION PROJECTS**

The Department of Public Works received only two (2) proposal for the RFP solicitation for the Referenced RFP. Per Section 126.302(1) of the Procurement Code If:

"PSEC receives responses from less than three proposers, it shall re-solicit proposals from proposers previously solicited and from additional persons, unless it determines, in writing, that no advantage would be obtained by re-soliciting. Notwithstanding the number of responses received, PSEC may proceed to consider those proposers responding to the re-solicitation or to the initial solicitation if it determines, in writing, that no advantage would be obtained by re-soliciting."

The Department of Public Works does not have sufficient staff to provide CEI services for this project. Since Public Works does not have adequate in-house inspection staff to inspect large projects, the City has, in the recent past been hiring Consultants to provide the necessary Construction Engineering and Inspection services. The RFP for these services was advertised for 4 weeks and was downloaded by 9 Engineering firms that have recently been submitting proposals to provide Construction Engineering and Inspection services on City projects. 7 of the firms downloaded the RFP within 2 days after advertising. We feel that the advertising period afforded ample time for consulting firms to become aware of the RFP and prepare/submit responses. Additionally, we believe that we have received proposals from 2 qualified firms.

Considering the foregoing information, staff requests permission to review and rank the 2 proposals received.

Attachment: Download List for RFP

cc: David D. Hahn, P. E., Engineering and Construction Management
Lori West, Contract Specialist, Engineering and Construction Management



City of Jacksonville, Florida

Lenny Curry, Mayor

Department of Public Works
Engineering & Construction Management Division
214 N. Hogan Street, 10th Floor
Jacksonville, FL 32202
(904) 255-8762
www.coj.net

ONE CITY. ONE JACKSONVILLE.

TO: Dustin Freeman, Chairperson
Professional Services Evaluation Committee

THRU Steven D. Long, Jr., P. E.
Director of Public Works

FROM: Robin Smith, P. E., Chief
Engineering and Construction Management Division

Tom McKnight, Manager, Construction Management Section
Engineering and Construction Management Division

DATE: March 28, 2023

**RE: REQUEST FOR PROPOSALS – RFP NO. P-04-23
CONSTRUCTION ENGINEERING AND INSPECTION SERVICES FOR
FOUR DOWNTOWN ROADWAY PROJECTS**

Please take appropriate action to issue the attached Request for Proposals (RFP) for subject professional services.

The following information is furnished as required by the Ordinance Code and Procurement Department Regulations:

1. The general purpose of these services is stated in the accompanying RFP.
2. The objective of this request is to make available professional services as stated in the RFP.
3. The services shall be performed in accordance with negotiated time schedules.
4. The cost for these services is estimated at approximately \$2,500,000.
5. These services will not duplicate prior or existing work.
6. There are no current or prior services directly related to this request.
7. Coordination has been completed between the pertinent Divisions of the Department of Public Works for proper utilization of these services.
8. The Department of Public Works does not have the in-house capabilities to provide these services.

9. A subcommittee composed of Robin Smith, P. E., Chief, Engineering and Construction Management Division, 255-8710; and Tom McKnight, Manager, Construction Management Section, Engineering and Construction Management Division, 255-8744, is assigned to review submittals for this RFP.
10. Internal Services administrative costs should be charged to Account No. PWEN011AD.
11. Funding will be identified at the time purchase orders are issued for these services.
12. All firms who have expressed an interest in furnishing Professional Engineering Services as detailed in the RFP should be mailed a notice of this RFP.
13. The subcommittee members assigned to this RFP have read and understand the Procurement Administrative Code dated April 2022.
14. Three (3) weeks is believed to be sufficient time for interested parties to respond to this RFP.

We certify the contents of this memorandum are correct and true to the best of our knowledge.

Attachment: Request for Proposals
Risk Management Approval (sent by e-mail)
EBO Approval (sent by e-mail)

cc: Lori West, Contract Specialist, Engineering Division



ONE CITY. ONE JACKSONVILLE

City of Jacksonville, Florida

Lenny Curry, Mayor

Department of Public Works
Engineering & Construction Management Division
214 N. Hogan Street, 10th Floor
Jacksonville, FL 32202
(904) 255-8762
www.coj.net

TO: Dustin Freeman, Chairperson
Professional Services Evaluation Committee

THRU: Steven D. Long, Jr., P. E.
Director of Public Works *Steven D. Long, Jr.*

FROM: Robin Smith, P. E., Chief
Engineering and Construction Management Division *Robin Smith*

Jill Enz, RLA, Chief
Natural and Marine Resources Division *Jill Enz*

DATE: March 28, 2023

**RE: REQUEST FOR PROPOSALS – RFP NO. P-08-23
PROFESSIONAL DESIGN SERVICES FOR SPORTS FIELDS**

Please take appropriate action to issue the attached Request for Proposals (RFP) for subject professional services.

The following information is furnished as required by the Ordinance Code and Procurement Department Regulations:

1. The general purpose of these services is stated in the accompanying RFP.
2. The objective of this request is to make available professional services as stated in the RFP.
3. The services shall be performed in accordance with negotiated time schedules.
4. The cost for these services is estimated at approximately \$1,500,000.
5. These services will not duplicate prior or existing work.
6. There are no current or prior services directly related to this request.
7. Coordination has been completed between the pertinent Divisions of the Department of Public Works for proper utilization of these services.
8. The Department of Public Works does not have the in-house capabilities to provide these services.

9. A subcommittee composed of Robin Smith, P. E., Chief, Engineering and Construction Management Division, 255-8710; and Jill Enz, Parks Development and Natural Resources Manager, 255-7941, is assigned to review submittals for this RFP.
10. Internal Services administrative costs should be charged to Account No. PWEN011AD.
11. Funding will be identified at the time purchase orders are issued for these services.
12. All firms who have expressed an interest in furnishing Professional Engineering Services as detailed in the RFP should be mailed a notice of this RFP.
13. The subcommittee members assigned to this RFP have read and understand the Procurement Administrative Code dated April 2022.
14. Three (3) weeks is believed to be sufficient time for interested parties to respond to this RFP.

We certify the contents of this memorandum are correct and true to the best of our knowledge.

Attachment: Request for Proposals
Risk Management Approval (sent by e-mail)
EBO Approval (sent by e-mail)

cc: Lori West, Contract Specialist, Engineering Division



City of Jacksonville, Florida

Lenny Curry, Mayor

Department of Public Works
Engineering & Construction Management Division
214 N. Hogan Street, 10th Floor
Jacksonville, FL 32202
(904) 265-8782
www.coj.net

ONE CITY ONE JACKSONVILLE

March 27, 2023

TO: Dustin Freeman, Chairperson
Professional Services Evaluation Committee

THRU: Steven D. Long, Jr., P.E.
Director *Steven D. Long, Jr.*

FROM: Will Williams
Director of Operations *Will Williams*

Tim Crutchfield,
Director of Operations, District IV Medical Examiner's Office *Tim Crutchfield*

RE: P-17-19 Professional Architectural and Engineering Services for Programming, Site Selection and Design of New Medical Examiner's Office
Contract 10754 Amendment 5 PO 600882-20-021

Design services to add Power over Ethernet (POE) and additional IT Support services are needed for the Medical Examiner's Office. Negotiations have resulted in the in the attached Scope of Services, Exhibit K and Fee Summary, Exhibit L. Gresham Smith is committed to meeting the 20% JSEB participation goals established for this contract.

Accordingly, this is to recommend that Contract 10754, originally executed February 4, 2020 between the City of Jacksonville and Gresham Smith for Professional Design Services for Professional Architectural and Engineering Services for Programming, Site Selection and Design of the New Medical Examiner's Office be amended to incorporate the attached Scope of Services, Exhibit K and Fee Summary, Exhibit L, to increase the lump sum amount for Design Services by \$218,030.09 to a new lump sum amount of \$2,478,499.24, thereby increasing the maximum indebtedness by \$218,030.09 to a new maximum amount of \$2,702,677.44. All other terms and conditions are as provided in the RFP and the City's standard contract language.

Funding for this project should be as follows:

ACCOUNTS:	TOTAL
32111.153103.585031.006237.00.00.00	\$108,823.80
32111.153103.585051.006237.00.00.00	\$109,206.29
TOTAL	\$218,030.09

JPP/tw

Attachment: Exhibits K & L
JSEB Participaton

cc: Lori West, Engineering and Construction Management
Maria C. Williams, P.E., Engineer Manager, Engineering and Construction Management



January 10, 2023

Maria C. Williams, P.E.
City of Jacksonville | Department of Public Works
214 N. Hogan Street - 10th Floor
Jacksonville, FL 32202

Subject: COJ-Medical Examiner's Office
Amendment #5
POE (Power Over Ethernet) Lighting and IT Design Services
Gresham Smith Project Number: 44464.01

Dear Maria,

We appreciate the opportunity to submit Amendment #5 to add POE (Power Over Ethernet) Lighting and IT Design Services for incorporation into the scope of work for the Medical Examiner Office. The following is a summary of the scope of work in Amendment #5:

SCOPE OF WORK

- **DESIGN PHASE SERVICES FOR POE Lighting**
 1. Solicit POE lighting package from the lighting manufacturer, SESCO.
 2. Conduct weekly design update meetings with the COJ IT and MEO User Group to advance this design.
 3. Revise current design to accommodate POE lighting system and backup water system to include revisions to the reflected ceiling plans, lighting schedules power and associated specifications.
 4. Eng Engineering will engage Mark Tarrance to provide third party review of the POE lighting design due to his familiarity with city best practices for data/network systems and low voltage systems.
 5. Gresham Smith's lighting consultant will perform an off team review of the POE package developed by Eng Engineering to confirm that the design scope complies with integration, functionality, energy code requirements in addition to review for any scope gaps and confirm constructability. They will also review to confirm that the lighting system meets all requirements for NFPA 101 with regards to controlling egress type lighting fixtures and that any devices (sensors, switches, etc.) are UL 924 compliant. Confirm fixtures are appropriate for the spaces they are serving.
 6. Accompany City Officials with visit to BICSI headquarters in Tampa for discussion and demonstrations on POE lighting. Subconsultant has arranged the demonstration and will accompany the visit.

Genuine Ingenuity

225 Water Street
Suite 2200
Jacksonville, FL 32202
904.332.6699

GreshamSmith.com

Firm's Florida Cert. No. AAP000034 /
CA3806 / IB26000797 / LC26000381

- 7. Revise current potable water service to site for a backup water supply.

Deliverables

1. Revise current design to accommodate POE lighting system to include reflected ceiling, power, lighting plans and schedules.
2. Revise current potable water design to include backup water system.

- **DESIGN PHASE SERVICES FOR IT EQUIPMENT, MDF ROOM**

SCOPE OF WORK

Architectural IT Design Coordination and Support Services that were not previously incorporated with associated IT Engineering Design Services in Amendment #4.

Exclusions

This Amendment does not include construction phase services for POE Lighting and IT Equipment MDF Room design scope. An Amendment will be issued at a future date to incorporate these services once the scope of work is better understood.

Fees

The following is a summary of additional services and fees associated with Amendment #5:

• Gresham Smith-(IT Design Coordination and Support-Exhibit R)	\$ 48,312.51
• Eng Engineering (POE Lighting Design/Backup Water Revision – Exhibit S)	\$ 95,518.94
• <u>Gresham Smith (POE Lighting Design Coordination – Exhibit T)</u>	<u>\$ 74,198.64</u>
Total Design Services Amendment #5	\$ 218,030.09

Note:

- The Exhibits in Amendment #5 are added to prior exhibit sequence in Amendments #1-#4

Summary of Fees

Site Selection (Original)	\$191,699.92
90% Building Design (Amendment 1)	\$1,188,335.22
60% Civil Engineering (Amend 2)	\$54,401.00
Design Implementation (Amend 3)	\$1,006,461.21
IT Support Services (Amend 4)	\$0
POE Lighting Design and IT Design Support Services (Amend 5)	\$218,030.09
Total Adjusted Design Fee	\$2,658,927.44

Miscellaneous Direct Costs

Total Misc. Direct Costs (Amendment #5)	\$ 0.00
Total Contract Indebtedness with Direct Costs Thru Amendment #5	\$2,702,677.44

SUMMARY OF MILESTONE DESIGN DURATIONS

EXHIBIT K

COJ MEO Amendment #5
January 10, 2023

The design team will provide a schedule to implement the following design tasks upon execution of Amendment #5.

If you have any questions to advance the contract negotiations for the services described in this proposal, please do not hesitate to call me at 904-332-6699

Sincerely,

Richard P Bouchereau, Jr
Richard P Bouchereau, Jr (Jan 11, 2023 14:56 EST)

Richard Bouchereau
Vice President
Copy File

**CONTRACT FEE SUMMARY FORMAT FOR ENGINEERING DIVISION
CITY OF JACKSONVILLE, FLORIDA**

EXHIBIT L

PART I - GENERAL

1. Project COJ Medical Examiner's Office Building Amendment 05	2. Proposal No. / Contract No. 10754
3. Name of Consultant Gresham Smith-IT Design Coordination and Support	4. Date of Proposal 1/10/2023-Revised 3/23/23

PART II - LABOR RELATED COSTS

5. Direct Labor	Hourly Rate	Estimated Hours	Estimated Cost	TOTAL
Architect P9/Principal/Senior Healthcare Planners	\$ 96.67	16	\$ 1,546.72	1,546.72
Architect P8/Engineer P8	\$ 71.67	24	\$ 1,720.08	1,720.08
Senior Architect P8/Project Manager/Senior Engineer P8	\$ 65.00	80	\$ 5,200.00	5,200.00
Senior Architect P7/Medical Planner/Systems Analyst/Senior Engineer P7	\$ 58.34	0	\$ 0.00	0.00
Architect P6/Project Engineer P6/Coordinator T7/Interior Designer P8	\$ 51.67	0	\$ 0.00	0.00
Architect P5/Engineer P5/Coordinator T6/Interior Designer P6	\$ 45.00	120	\$ 5,400.00	5,400.00
Architect P4/Engineer/Interior Designer P5/Coordinator T5	\$ 38.34	0	\$ 0.00	0.00
Intern Architect P3/Intern Designer P3/Coordinator T4	\$ 31.67	80	2,533.60	2,533.60
Intern Architect P2/Intern Designer P2/Intern Engineer P2/System Analyst CAD Tech T3/Intern Architect P1/Intern Designer P1	\$ 28.34	0	\$ 0.00	0.00
Administrative Support	\$ 25.00	0	\$ 0.00	0.00
	\$ 21.67	8	\$ 173.36	173.36
TOTAL DIRECT LABOR	\$50.53	328		\$ 16,573.76
6. Overhead (Combined Fringe Benefit & Administrative)				
Overhead Rate	165 % x Total Direct Labor			\$ 27,346.70
7. SUBTOTAL: Labor + Overhead (Items 5 & 6)				\$ 43,920.46
8. PROFIT: Labor Related Costs (Item 7)	x		10%	\$ 4,392.05

PART III - OTHER COSTS

9. Miscellaneous Direct Costs				
Transportation & Shipping	\$			
Original Reproducibles	\$			
Reproduction	\$			
Other	\$			
MISCELLANEOUS DIRECT COSTS SUB-TOTAL				\$ -
10. SUBCONTRACTS (Lump Sum)				
Eng Engineering (POE Lighting Design/Backup Water Revision - Exhibit S)	\$	95,518.94		
Gresham Smith (POE Lighting Design Coordination - Exhibit T)		74,198.64		
SUB-CONTRACT SUB-TOTAL				\$ 169,717.58
TOTAL LUMP SUM AMOUNT (Items 5, 6, 8, 9 and 10)				\$ 218,030.09
11. REIMBURSABLE COSTS (Limiting Amount)	\$			
	\$			
	\$			
	\$			
	\$			
	\$			
SUB-TOTAL REIMBURSABLES				\$ -

PART IV - SUMMARY

12. TOTAL AMOUNT AMENDMENT NO. 0 (Lump Sum + Reimbursables) (Items 5, 6, 8, 9, 10 and 11)	\$ 218,030.09
13. CURRENT CONTRACT AMOUNT	\$2,484,647.35
14. NEW CONTRACT AMOUNT	\$ 2,702,677.44

**CONTRACT FEE SUMMARY FORMAT FOR ENGINEERING DIVISION
CITY OF JACKSONVILLE, FLORIDA**

Exhibit R

EXHIBIT L

PART I - GENERAL

1. Project COJ Medical Examiner's Office Building Amendment 05	2. Proposal No. / Contract No. 10754
3. Name of Consultant Gresham Smith-IT Design Coordination and Support	4. Date of Proposal 01/10/23

PART II - LABOR RELATED COSTS

5. Direct Labor	Hourly Rate	Estimated Hours	Estimated Cost	TOTAL
Architect P9/Principal/Senior Healthcare Planners	\$ 96.67	16	\$ 1,546.72	1,546.72
Architect P8/Engineer P8	\$ 71.67	24	\$ 1,720.08	1,720.08
Senior Architect P8/Project Manager/ Senior Engineer P8	\$ 65.00	80	\$ 5,200.00	5,200.00
Senior Architect P7/Medical Planner/ Systems Analyst/Senior Engineer P7	\$ 58.34	0	\$ 0.00	0.00
Architect P6/Project Engineer P6/ Coordinator T7/Interior Designer P8	\$ 51.67	0	\$ 0.00	0.00
Architect P5/Engineer P5/Coordinator T6/Interior Designer P6	\$ 45.00	120	\$ 5,400.00	5,400.00
Architect P4/Engineer/Interior Designer P5/Coordinator T5	\$ 38.34	0	0.00	0.00
Intern Architect P3/Intern Designer P3/Coordinator T4	\$ 31.67	80	2,533.60	2,533.60
Intern Architect P2/Intern Designer P2/Intern Engineer P2/System Analyst	\$ 28.34	0	0.00	0.00
CAD Tech T3/Intern Architect P1/Intern Designer P1	\$ 25.00	0	0.00	0.00
Administrative Support	\$ 21.67	8	\$ 173.36	173.36
TOTAL DIRECT LABOR	\$50.53	328		\$ 16,573.76
6. Overhead (Combined Fringe Benefit & Administrative)				
Overhead Rate	165 % x Total Direct Labor		\$	27,346.70
7. SUBTOTAL: Labor + Overhead (Items 5 & 6)				\$ 43,920.46
8. PROFIT: Labor Related Costs (Item 7) x 10%				\$ 4,392.05

PART III - OTHER COSTS

9. Miscellaneous Direct Costs				
Transportation & Shipping			\$	
Original Reproducibles			\$	
Reproduction			\$	
Other			\$	
MISCELLANEOUS DIRECT COSTS SUB-TOTAL				\$ -
10. SUBCONTRACTS (Lump Sum)				
			\$	
SUB-CONTRACT SUB-TOTAL				\$ -
TOTAL LUMP SUM AMOUNT (Items 5, 6, 8, 9 and 10)				\$ 48,312.51
11. REIMBURSABLE COSTS (Limiting Amount)				
			\$	
			\$	
			\$	
			\$	
			\$	
			\$	
SUB-TOTAL REIMBURSABLES				\$ -

PART IV - SUMMARY

12. TOTAL AMOUNT AMENDMENT NO. 0 (Lump Sum + Reimbursables) (Items 5, 6, 8, 9, 10 and 11)	\$ 48,312.51
13. CURRENT CONTRACT AMOUNT	
14. NEW CONTRACT AMOUNT	\$ 48,312.51

**CONTRACT FEE SUMMARY FORMAT FOR ENGINEERING DIVISION
CITY OF JACKSONVILLE, FLORIDA**

EXHIBIT L

Exhibit S

PART I - GENERAL

1. Project COJ Medical Examiner's Office Building Amendment 05	2. Proposal No. / Contract No. 10754
3. Name of Consultant Eng Engineering-POE Lighting / Backup Water Revision	4. Date of Proposal 01/10/23

PART II - LABOR RELATED COSTS

5. Direct Labor	Hourly Rate	Estimated Hours	Estimated Cost	TOTAL
Architect P9/Principal/Senior Healthcare Planners	\$ 96.67	40	\$ 3,866.80	3,866.80
Architect P8/Engineer P8	\$ 71.67	0	\$ 0.00	0.00
Senior Architect P8/Project Manager/Senior Engineer P8	\$ 65.00	0	\$ 0.00	0.00
Senior Architect P7/Medical Planner/Systems Analyst/Senior Engineer P7	\$ 58.34	0	\$ 0.00	0.00
Architect P6/Project Engineer P6/Coordinator T7/Interior Designer P8	\$ 51.67	400	\$ 20,668.00	20,668.00
Architect P5/Engineer P5/Coordinator T6/Interior Designer P6	\$ 45.00	0	\$ 0.00	0.00
Architect P4/Engineer/Interior Designer P5/Coordinator T5	\$ 38.34	0	\$ 0.00	0.00
Intern Architect P3/Intern Designer P3/Coordinator T4	\$ 31.67	0	\$ 0.00	0.00
Intern Architect P2/Intern Designer P2/Intern Engineer P2/System Analyst	\$ 28.34	0	\$ 0.00	0.00
CAD Tech T3/Intern Architect P1/Intern Designer P1	\$ 25.00	0	\$ 0.00	0.00
Administrative Support	\$ 21.67	0	\$ 0.00	0.00
TOTAL DIRECT LABOR	\$55.76	440		\$ 24,534.80

6. Overhead (Combined Fringe Benefit & Administrative)	
Overhead Rate	165 % x Total Direct Labor
	\$ 40,482.42
7. SUBTOTAL: Labor + Overhead (Items 5 & 6)	\$ 65,017.22
8. PROFIT: Labor Related Costs (Item 7)	x 10% \$ 6,501.72

PART III - OTHER COSTS

9. Miscellaneous Direct Costs	
Transportation & Shipping	\$
Original Reproducible	\$
Reproduction	\$
Other	\$
MISCELLANEOUS DIRECT COSTS SUB-TOTAL	\$ -

10. SUBCONTRACTS (Lump Sum)	\$
SUB-CONTRACT SUB-TOTAL	\$ -
TOTAL LUMP SUM AMOUNT (Items 5, 6, 8, 9 and 10)	\$ 71,518.94

11. REIMBURSABLE COSTS (Limiting Amount)	
IT Subconsultant-Mark Tarrance	\$
160 hrs x \$150/hr	\$ 24,000.00
	\$
EEl Management of IT Consultant (see above)	\$
	\$
	\$
	\$
SUB-TOTAL REIMBURSABLES	\$ 24,000.00

PART IV - SUMMARY

12. TOTAL AMOUNT AMENDMENT NO. 0 (Lump Sum + Reimbursables) (Items 5, 6, 8, 9, 10 and 11)	\$ 95,518.94
13. CURRENT CONTRACT AMOUNT	
14. NEW CONTRACT AMOUNT	\$ 95,518.94

**CONTRACT FEE SUMMARY FORMAT FOR ENGINEERING DIVISION
CITY OF JACKSONVILLE, FLORIDA**

EXHIBIT L

Exhibit T

PART I - GENERAL

1. Project COJ Medical Examiner's Office Building Amendment 05	2. Proposal No. / Contract No. 10754
3. Name of Consultant Gresham Smith-IT Design Coordination and Support	4. Date of Proposal 01/10/23

PART II - LABOR RELATED COSTS

5. Direct Labor	Hourly Rate	Estimated Hours	Estimated Cost	TOTAL
Architect P9/Principal/Senior Healthcare Planners	\$ 96.67	24	\$ 2,320.08	2,320.08
Architect P8/Engineer P8	\$ 71.67	40	\$ 2,866.80	2,866.80
Senior Architect P8/Project Manager/ Senior Engineer P8	\$ 65.00	80	\$ 5,200.00	5,200.00
Senior Architect P7/Medical Planner/ Systems Analyst/Senior Engineer P7	\$ 58.34	0	\$ 0.00	0.00
Architect P6/Project Engineer P6/ Coordinator T7/Interior Designer P8	\$ 51.67	0	\$ 0.00	0.00
Architect P5/Engineer P5/Coordinator T6/Interior Designer P6	\$ 45.00	240	\$ 10,800.00	10,800.00
Architect P4/Engineer/Interior Designer P5/Coordinator T5	\$ 38.34	0	0.00	0.00
Intern Architect P3/Intern Designer P3/Coordinator T4	\$ 31.67	80	2,533.60	2,533.60
Intern Architect P2/Intern Designer P2/Intern Engineer P2/System Analyst	\$ 28.34	0	0.00	0.00
CAD Tech T3/Intern Architect P1/Intern Designer P1	\$ 25.00	0	0.00	0.00
Administrative Support	\$ 21.67	80	\$ 1,733.60	1,733.60
TOTAL DIRECT LABOR	\$46.79	544		\$ 25,454.08
6. Overhead (Combined Fringe Benefit & Administrative)				
Overhead Rate	165 % x Total Direct Labor			\$ 41,999.23
7. SUBTOTAL: Labor + Overhead (Items 5 & 6)				\$ 67,453.31
8. PROFIT: Labor Related Costs (Item 7)				\$ 6,745.33
				x 10%

PART III - OTHER COSTS

9. Miscellaneous Direct Costs		
Transportation & Shipping	\$	
Original Reproducibles	\$	
Reproduction	\$	
Other	\$	
MISCELLANEOUS DIRECT COSTS SUB-TOTAL		\$ -
10. SUBCONTRACTS (Lump Sum)	\$	
SUB-CONTRACT SUB-TOTAL		\$ -
TOTAL LUMP SUM AMOUNT (Items 5, 6, 8, 9 and 10)		\$ 74,198.64
11. REIMBURSABLE COSTS (Limiting Amount)	\$	
	\$	
	\$	
	\$	
	\$	
	\$	
SUB-TOTAL REIMBURSABLES		\$ -

PART IV - SUMMARY

12. TOTAL AMOUNT AMENDMENT NO. 0 (Lump Sum + Reimbursables) (Items 5, 6, 8, 9, 10 and 11)	\$ 74,198.64
13. CURRENT CONTRACT AMOUNT	
14. NEW CONTRACT AMOUNT	\$ 74,198.64

EBO FORM 1 DRAFT
SCHEDULE OF SUBCONTRACTOR/SUBCONSULTANT PARTICIPATION

Name of Proposer: Gresham Smith

Project Title: COJ-Medical Examiner's Office through Amendment #5

Proposal Number: _____ Total Base Proposal Amount (if applicable): \$2,658,927.44

***Please list all JSEBs first**

Full Company Name	JSEB Category (African-American, Women, Asian, Native American, Non-MBE or Hispanic)	Type of Work to be Performed	Total Contract Value or Percentage
*Alpha Envirotech Consulting Inc.	Women	Environmental Engineering/Assessment	\$ 56,337.25
*Meskel & Associates Engineering, PLLC	Women	Geotechnical Engineering Services	\$ 16,519.88
GM Hill Engineering, Inc.	n/a	Structural Engineering Assessment	\$ 0
GAI Consultants	n/a	Site Selection	\$ 33,626.00
Gresham Smith	n/a	Programming/Site Design	\$ 49,944.48
Gresham Smith	n/a	Building Architectural Design, Site Plan, FGBC Coord	\$1,066,819.69
GM Hill Engineering Inc.	n/a	Building Structural Engineering	\$187,051.41
Eng Engineering Inc.	Asian American	Building MEP/FP/Low Voltage	\$466,014.81
Ross & Baruzzini Mitchell Planning	n/a	Morgue Equipment Planning	\$ 38,538.63
GAI Consultants	n/a	GAI Civil Engineering/Landscape	\$189,558.00
Gresham Smith	n/a	30% Site Planning Design	\$ 19,895.28
Gresham Smith	n/a	FGBC Design Phase Coordination	\$ 20,007.45
*Mary Tappouni Consultant Breaking Ground Contracting Co.	Women	FGBC Design Phase Administration	\$ 37,701.44
Gresham Smith	n/a	Signage Design	\$ 43,833.84
*Eng Engineering Inc.	Asian American	MEP Commissioning	\$ 41,590.05
*Eng Engineering Inc.	Asian American	IT Equipment Design	\$ 97,949.83
Gresham Smith	n/a	Furniture Procurement	\$ 40,237.00
*Eng Engineering Inc.	Asian American	IT Support-Design Phase	\$ 35,271.72
Gresham Smith	n/a	IT Design Coordination & Support	\$ 48,312.51
Eng Engineering Inc.	Asian American	POE Lighting Design/Backup Water	\$ 95,518.94
Gresham Smith	n/a	POE Lighting Coordination	\$ 74,198.64

*Denotes JSEB Participating Consultants
 Attach additional list of subcontractors/sub-consultants as needed

CONSULTANT/SUBCONTRACTOR/SUPPLIER TOTAL VALUES	
African-American Participation Total	
Hispanic-American Participation Total	
Native-American Participation Total	
Asian-American Participation Total	\$736,345.35
Woman Participation Total	\$110,558.57
Non-MBE Participation Total	

The undersigned will enter into a formal Agreement with the JSEB Suppliers/Consultants/Subcontractors identified herein for work listed in this schedule conditioned upon execution of a contract with the City of Jacksonville. Under penalties of perjury I declare that I have read the foregoing conditions and instructions and the facts are true to the best of my knowledge and beliefs.

Signature of Richard P Boucherou, Jr
 Proposer: Richard P Boucherou, Jr (Mar 27, 2023 17:08 EDT)

Title: Vice President

Date: 1/10/2023

Print Name: Richard P Boucherou, Jr