

SHIPYARDS WEST

PUBLIC PARK DESIGN

DDRB PRESENTATION
MAY 2024



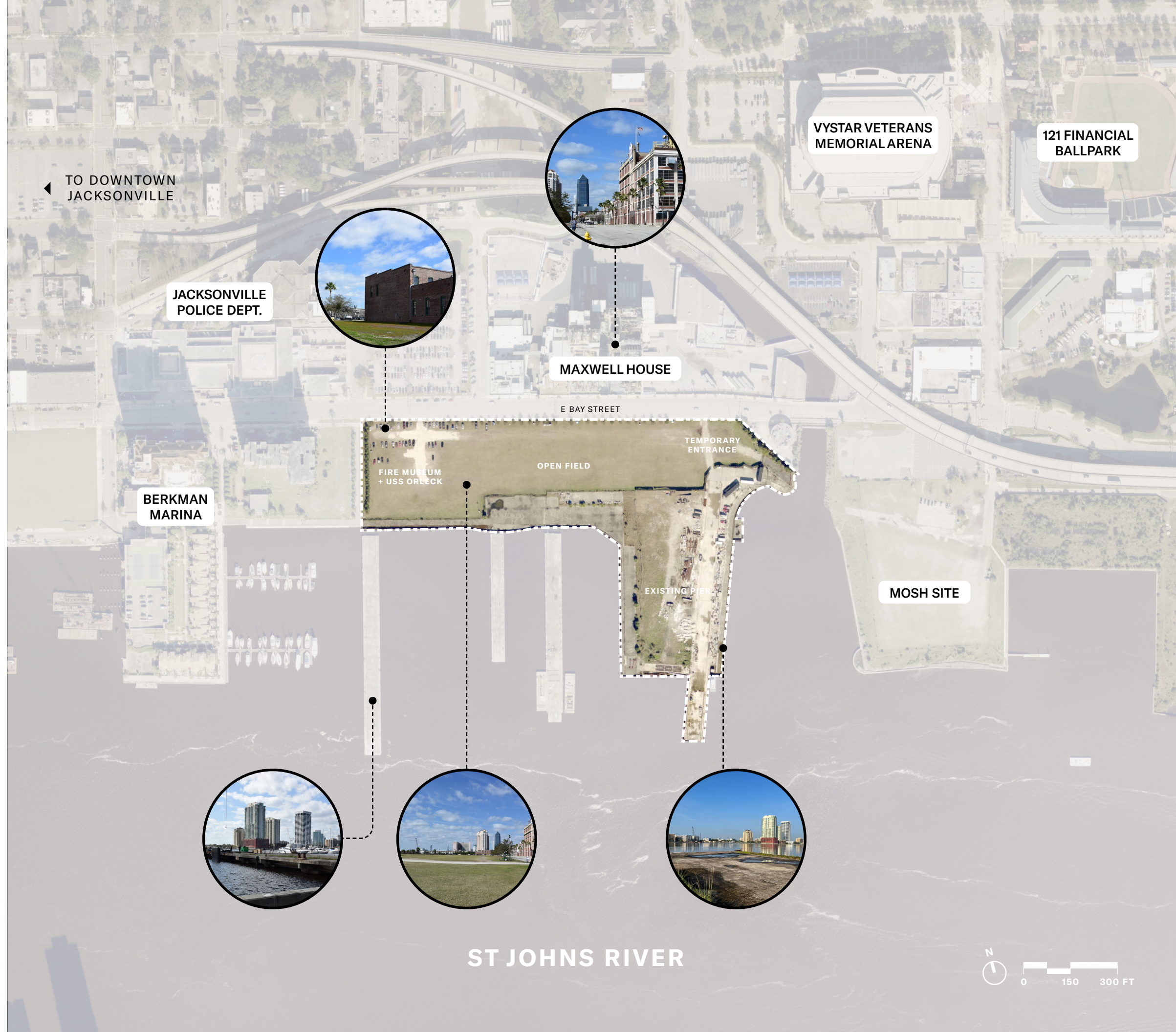
Agency
Landscape + Planning

VICINITY PLAN

CURRENT CONDITIONS

Shipyards West is situated on the westernmost side of the area known as the Jacksonville Shipyards. The area is bounded by E. Bay Street to the North, the St. Johns River to the South, Catherine Street to the west and Hogan's Creek to the east. The area is an integral part of the City/DIA's efforts to activate the Riverfront with several "nodes" along the Riverwalk.

This project is divided into two (2) distinct scopes, the Northbank CRA Scope and the Kids Kampus Replacement Park (KKRP) CIP Scope. The Northbank CRA Scope is limited to the uplands of Shipyards West outside the boundaries of the KKRP CIP Scope and includes adjacent submerged lands and piers. The KKRP is planned to be an approximately 9+ acre destination City park and public space located within and integrated into the larger site known as Shipyards West, which also includes the Northbank CRA Scope.



SITE HISTORY & INSPIRATION

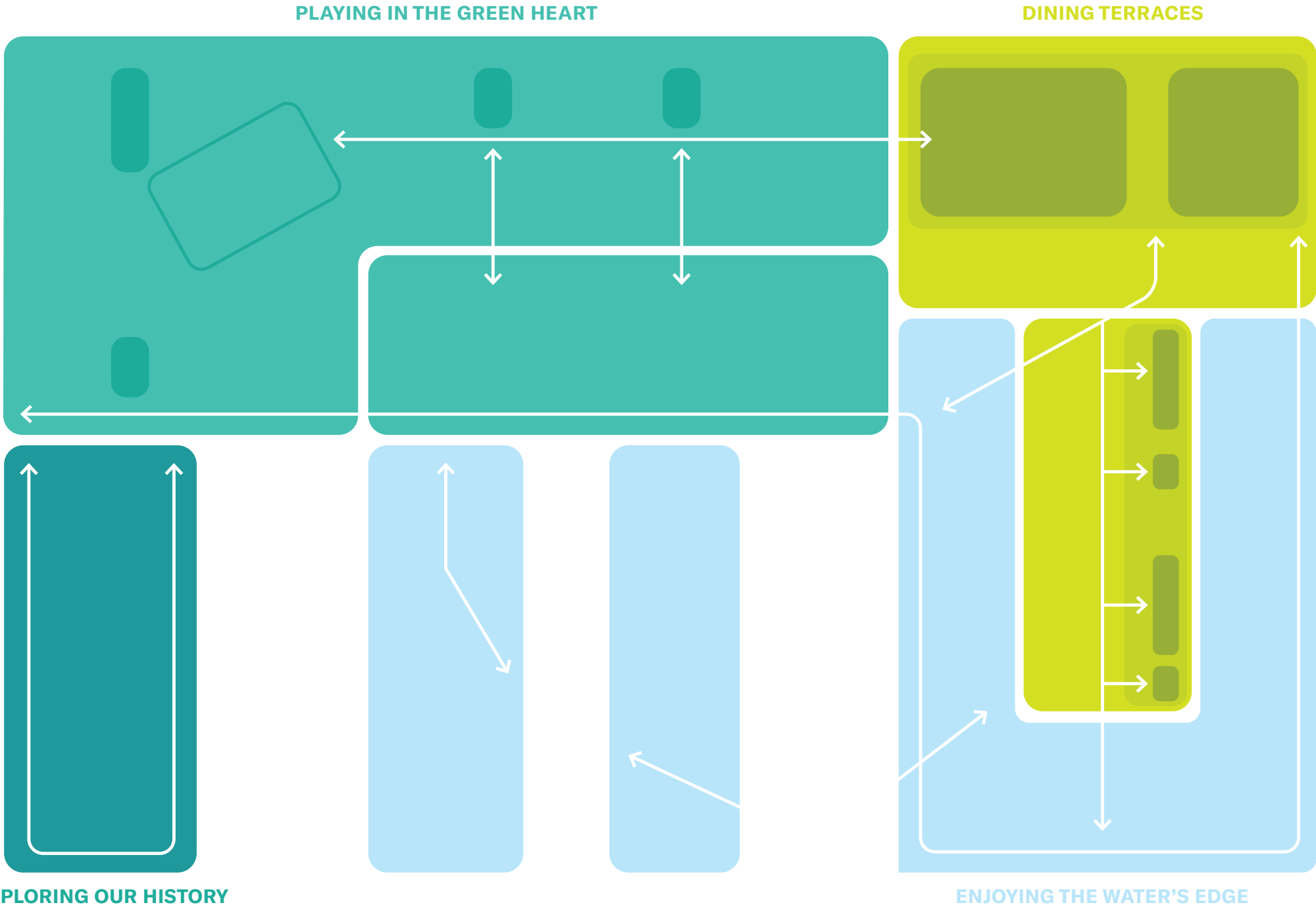


The site of the former Jacksonville Shipyard was started during the 1850s as the first shipbuilding operation in the city. By the early 20th century, the yard employed 1,500 and included the largest dry dock on the East Coast between Newport News and New Orleans.

During this era, the barges used in the construction of the Panama Canal were constructed on-site.

OUR DESIGN VISION

The goal of the Shipyards West Park plan is to develop and establish a wild-feeling nature-inspired space, intended to connect Jaxsons with natural habitats and environments. Park activities are nested within the landscape, framing views to the St. Johns River and buffering the park from the industrial uses to the north. The design introduces a gradient of experiences along the waterfront and connection to the water's edge.



SITE PLAN



E BAY STREET

SECONDARY PATHS
PATHS & TRAILS

MAIN PATHWAYS
SITE NETWORK

RIVERWALK
NORTHBANK CONNECTION

ADA KAYAK LAUNCH



SITE PERSPECTIVES

MODEL VIEWS



OVERALL SITE AERIAL
SCALE: NTS (NOT TO SCALE)

RENDERINGS ARE FOR REFERENCE ONLY.
NOT DRAWN TO SCALE BASED ON PLANS FOR
DESIGN DOCUMENTATION.

SHIPYARDS WEST PARK
May 2024

SITE PERSPECTIVES



BAY STREET SIDEWALK AND EVENTS PAVILION
SCALE: NTS (NOT TO SCALE)

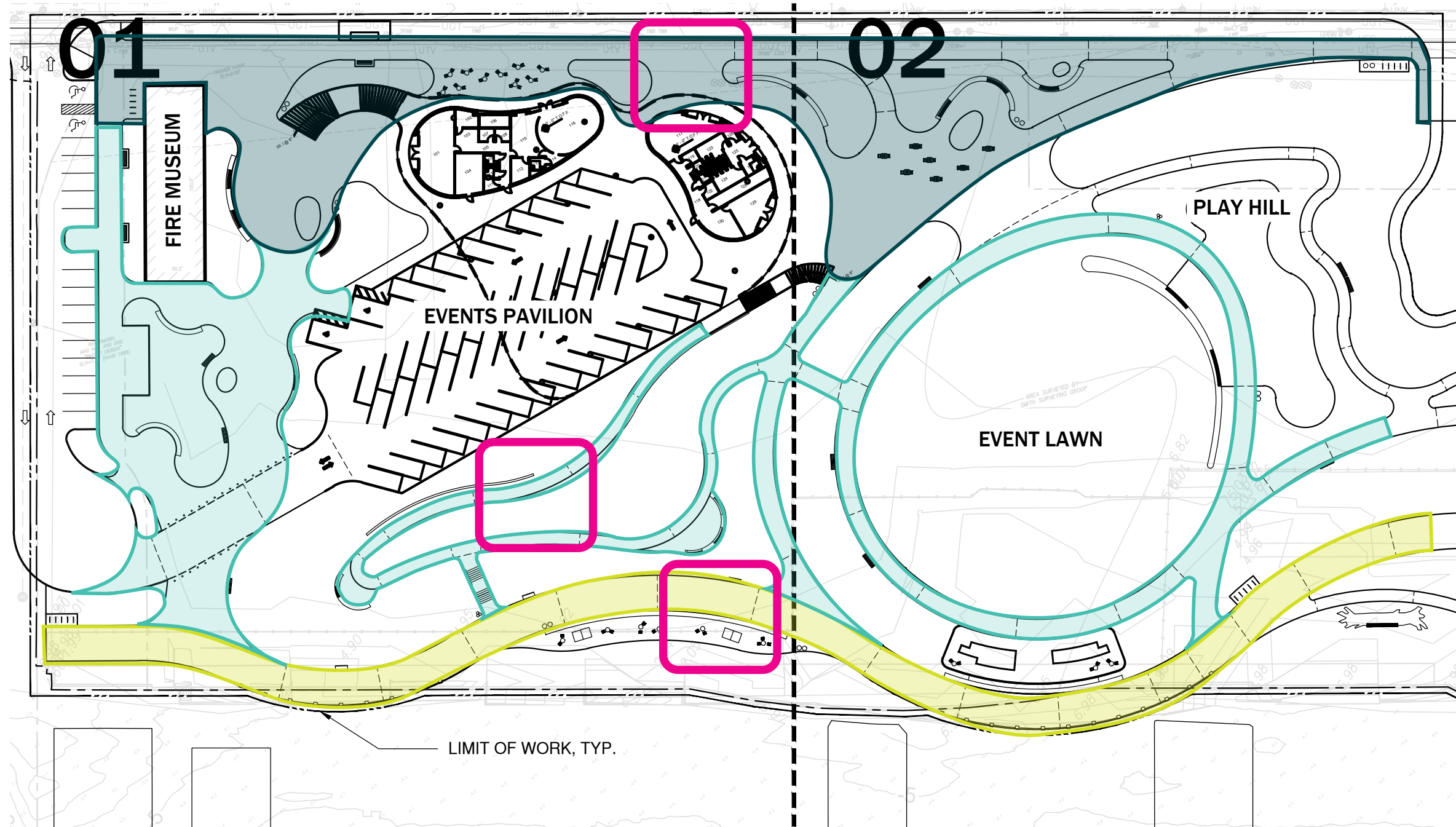
RENDERINGS ARE FOR REFERENCE ONLY.
NOT DRAWN TO SCALE BASED ON PLANS FOR
DESIGN DOCUMENTATION.

SHIPYARDS WEST PARK
May 2024

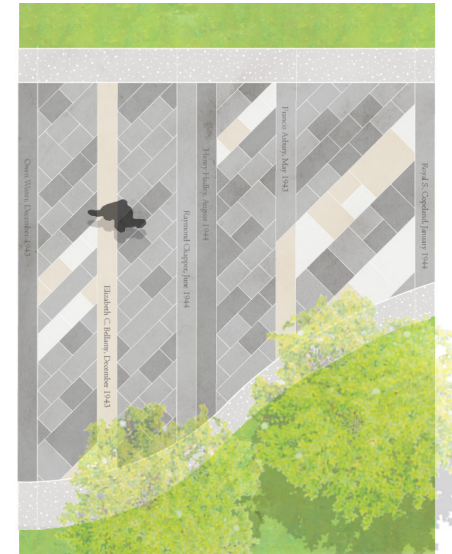


HARDSCAPE & PAVING

THEMATIC NETWORK

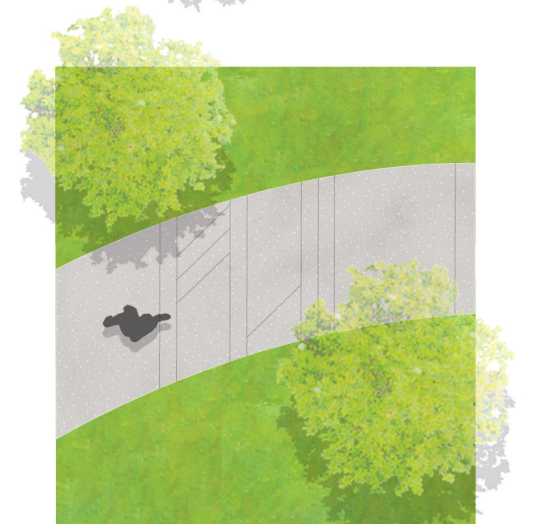


DIAGRAMS ARE FOR REFERENCE ONLY. NOT DRAWN TO SCALE BASED ON PLANS FOR DESIGN DOCUMENTATION.



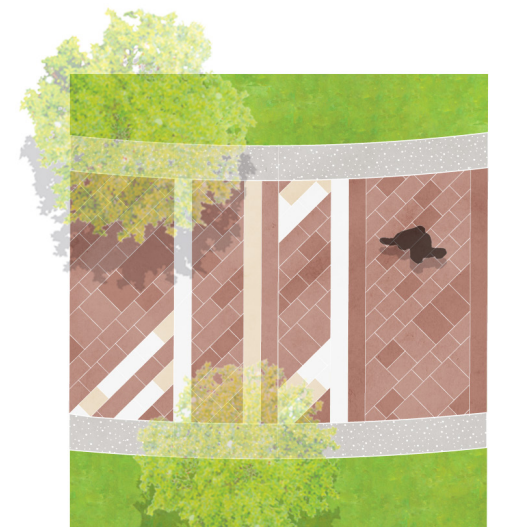
BAY STREET

SCALE: NTS



INNER PATHS

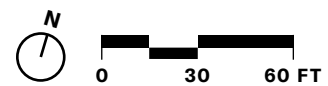
SCALE: NTS



RIVERWALK

SCALE: NTS

PAVING ENLARGEMENT



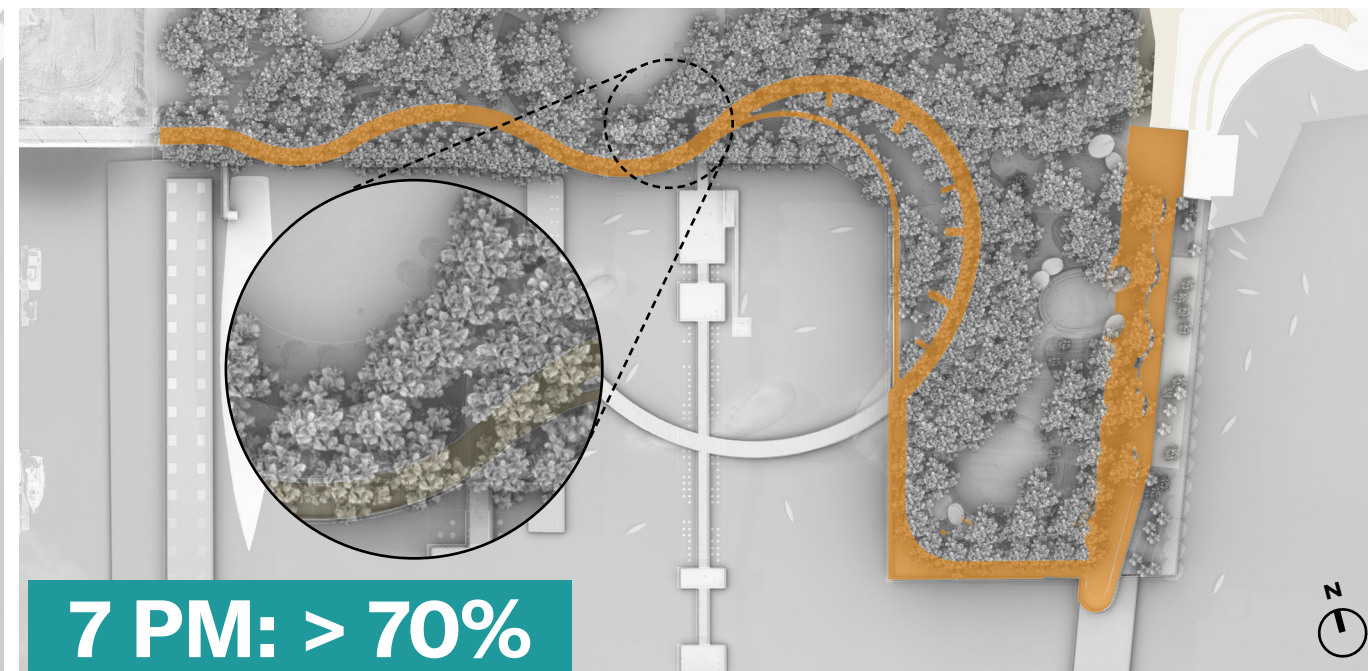
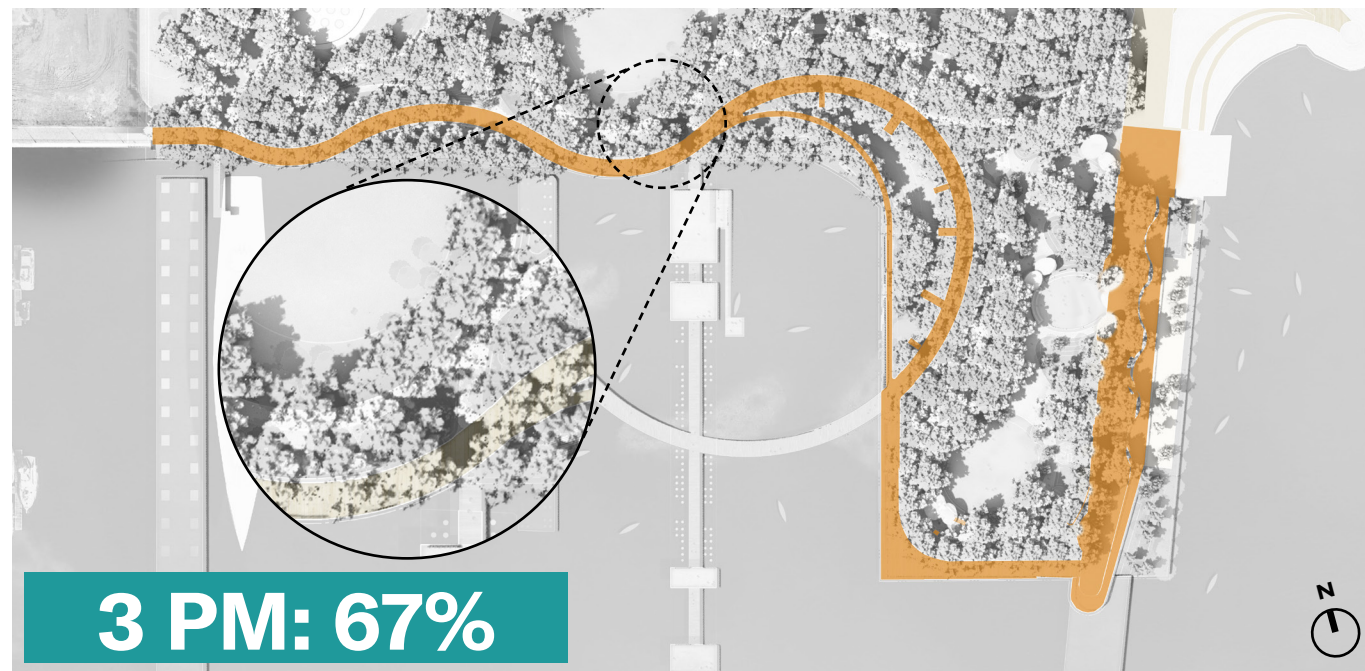
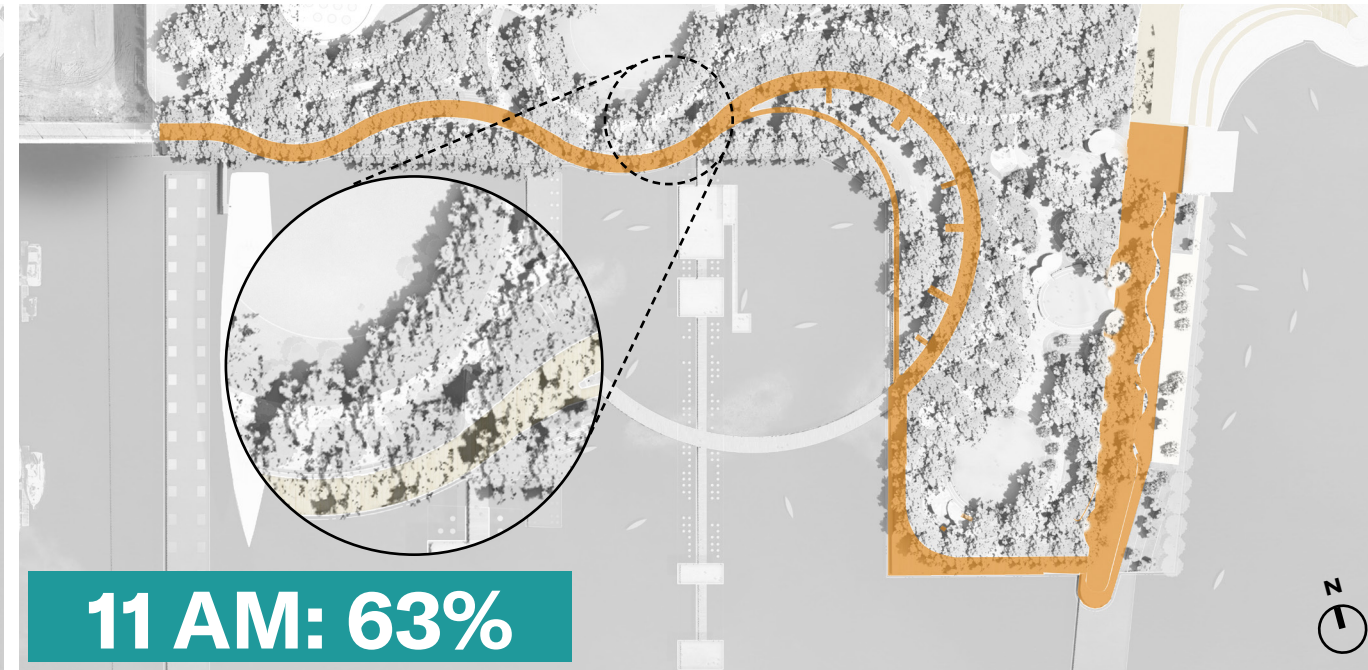
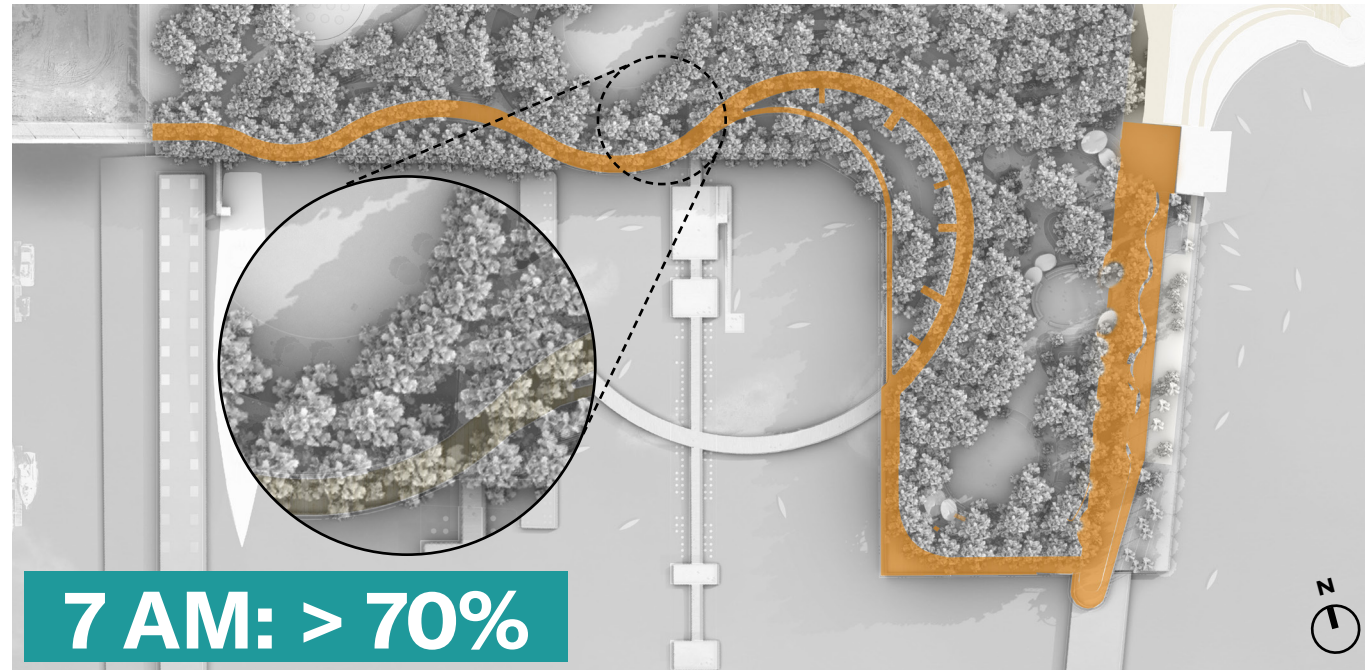
RIVERWALK SHADE STUDY

Tree size tested:

Large Canopy trees:
38' spread, 45' tall

Smaller Understory Trees:
12' spread, 14' tall

Note:
Shadow tests completed using
Jacksonville's geolocation and
sun exposures on July 31st.

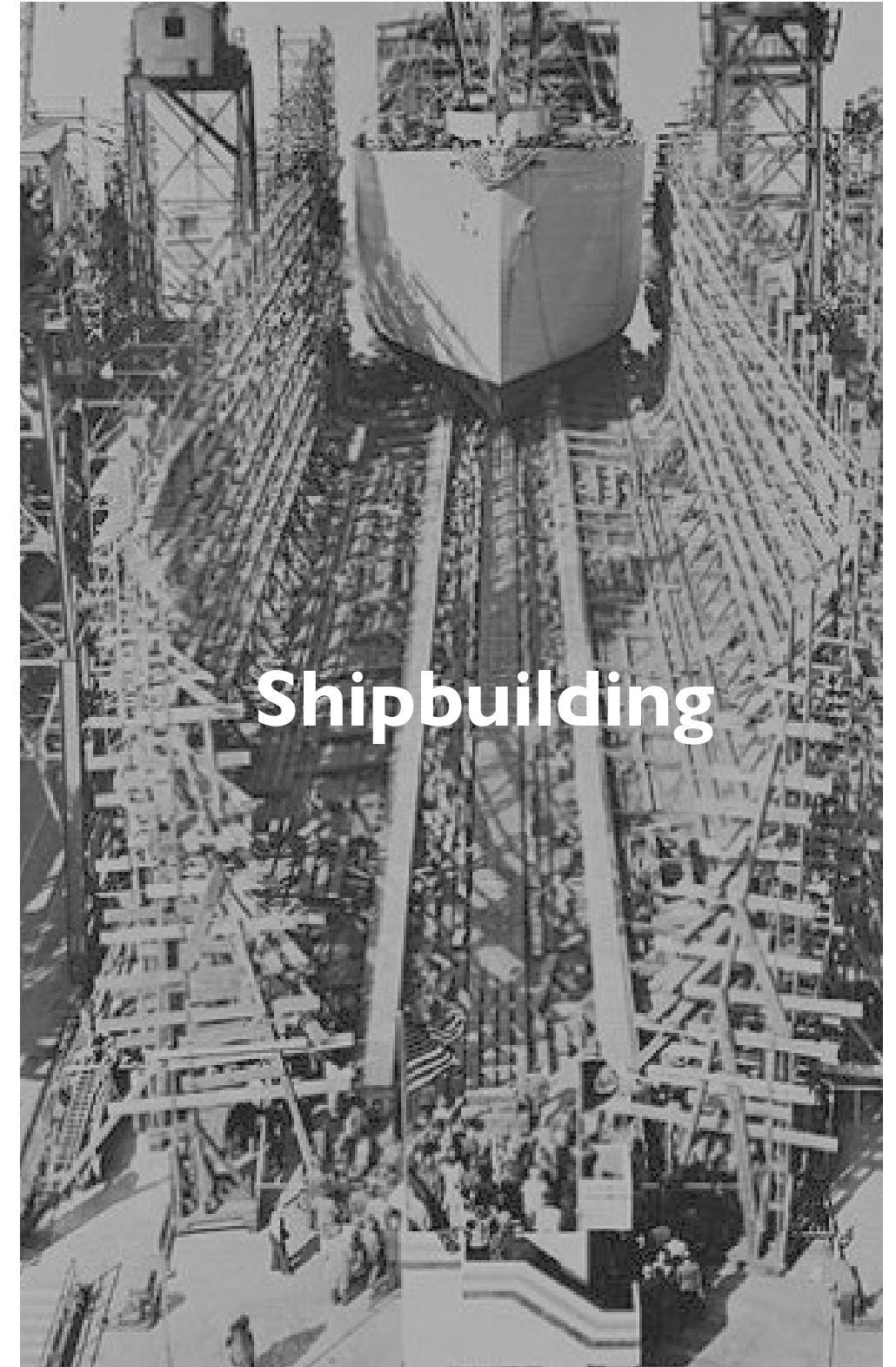
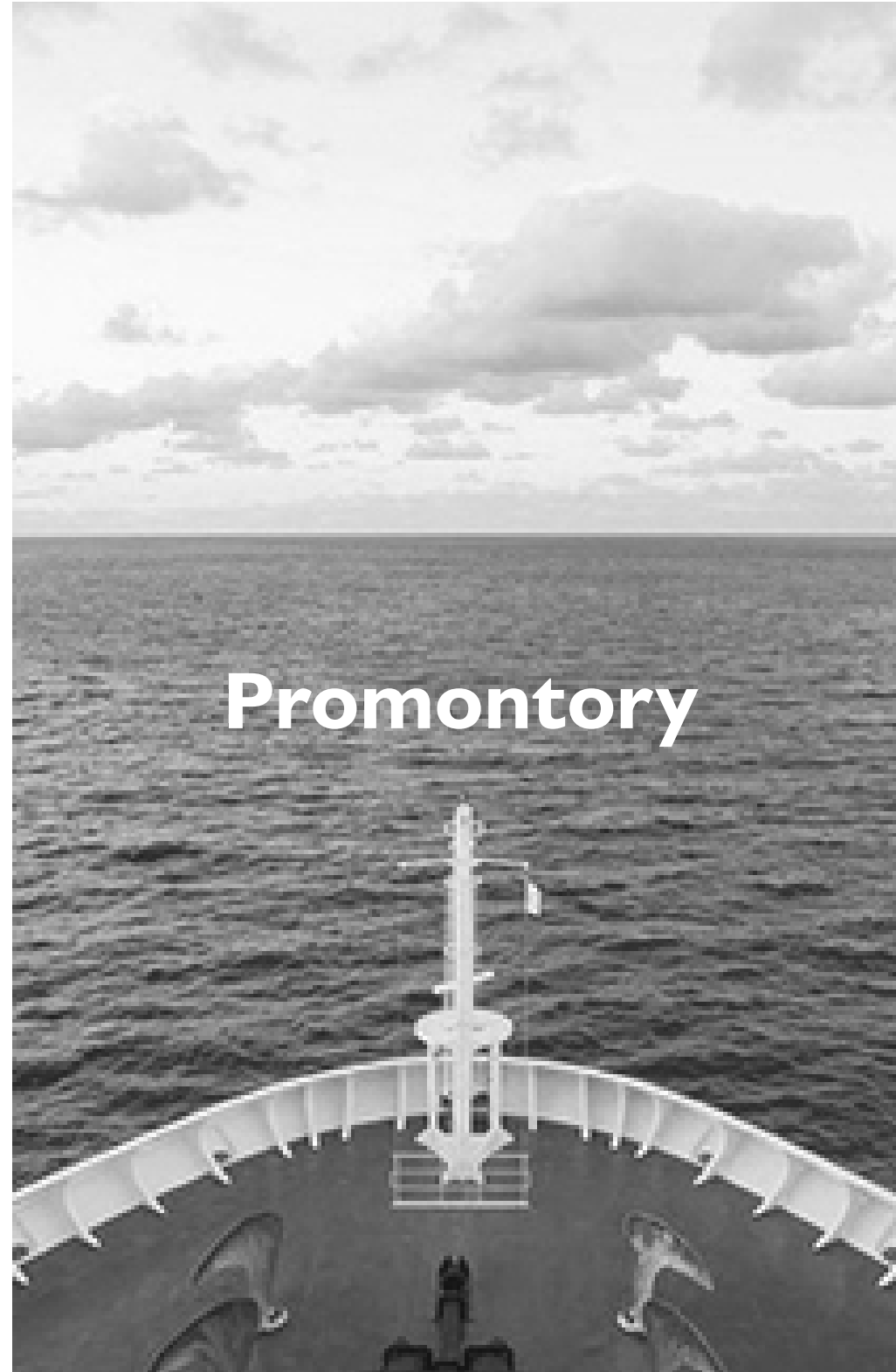
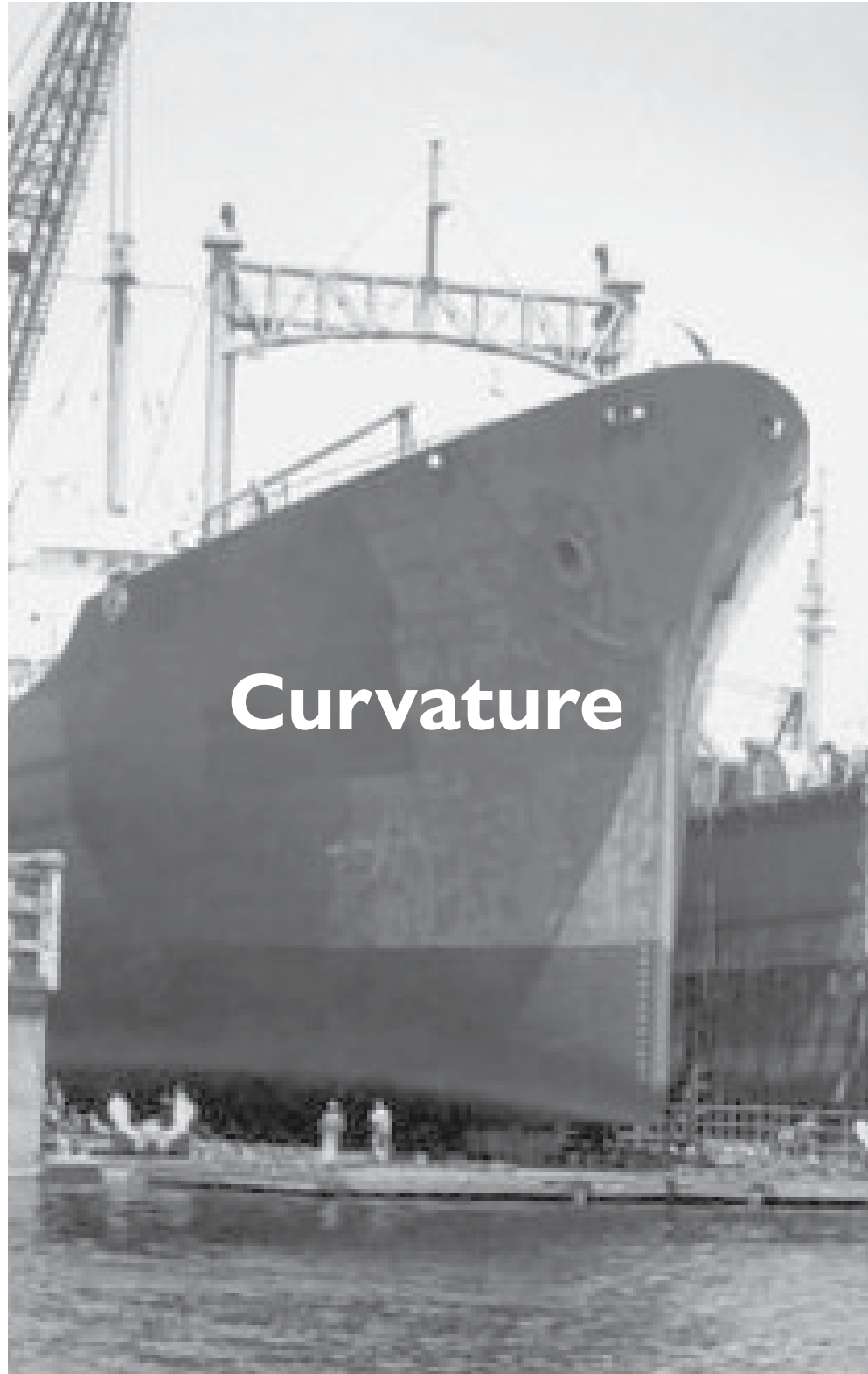


SITE SHADE STUDY - MODEL VIEW
SCALE: NTS (NOT TO SCALE)

CALCULATIONS ARE FOR REFERENCE ONLY. TO
BE FURTHER STUDIED IN 60-100% DESIGN

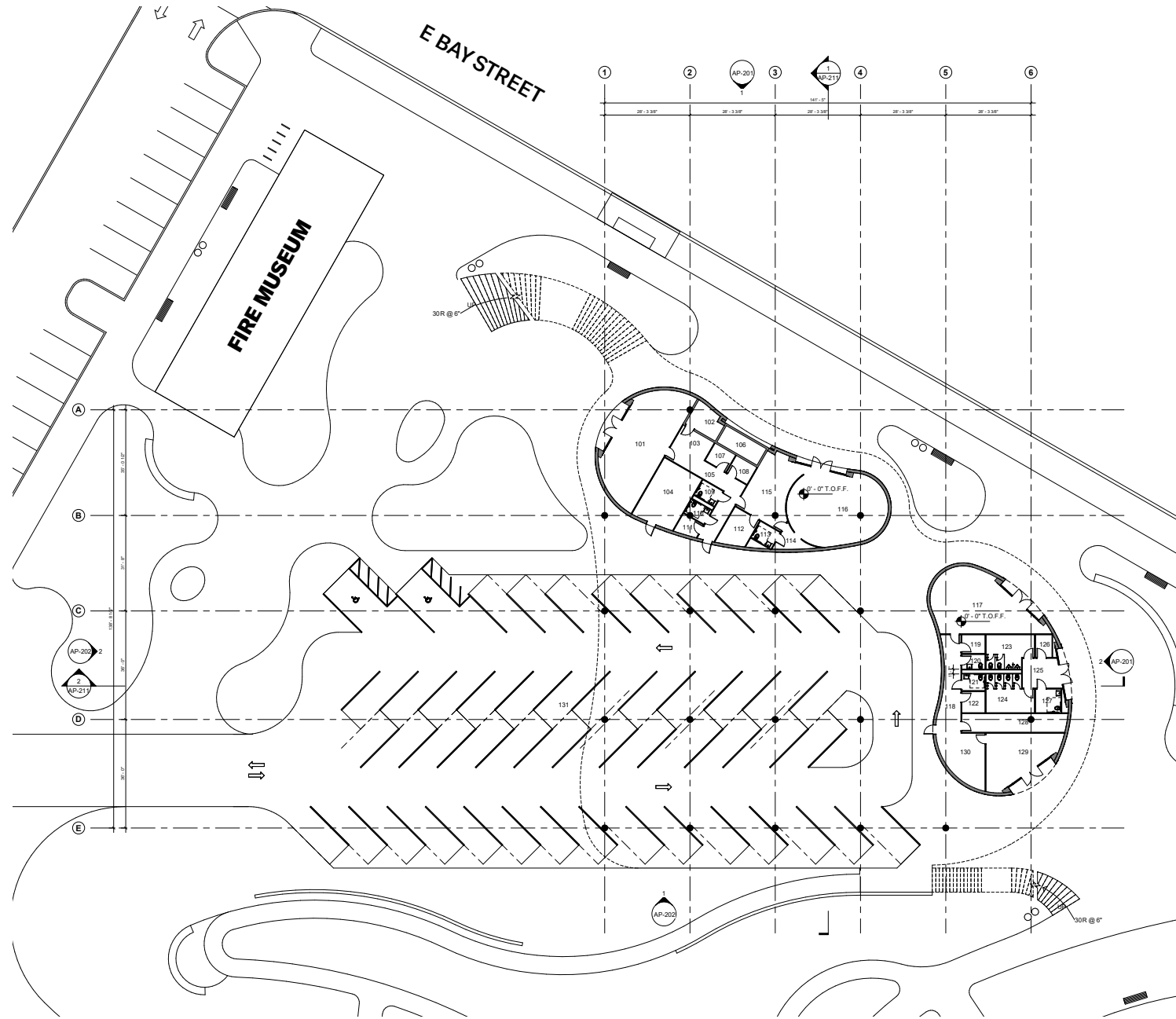
SHIPYARDS WEST PARK
May 2024

BUILDING MASSING

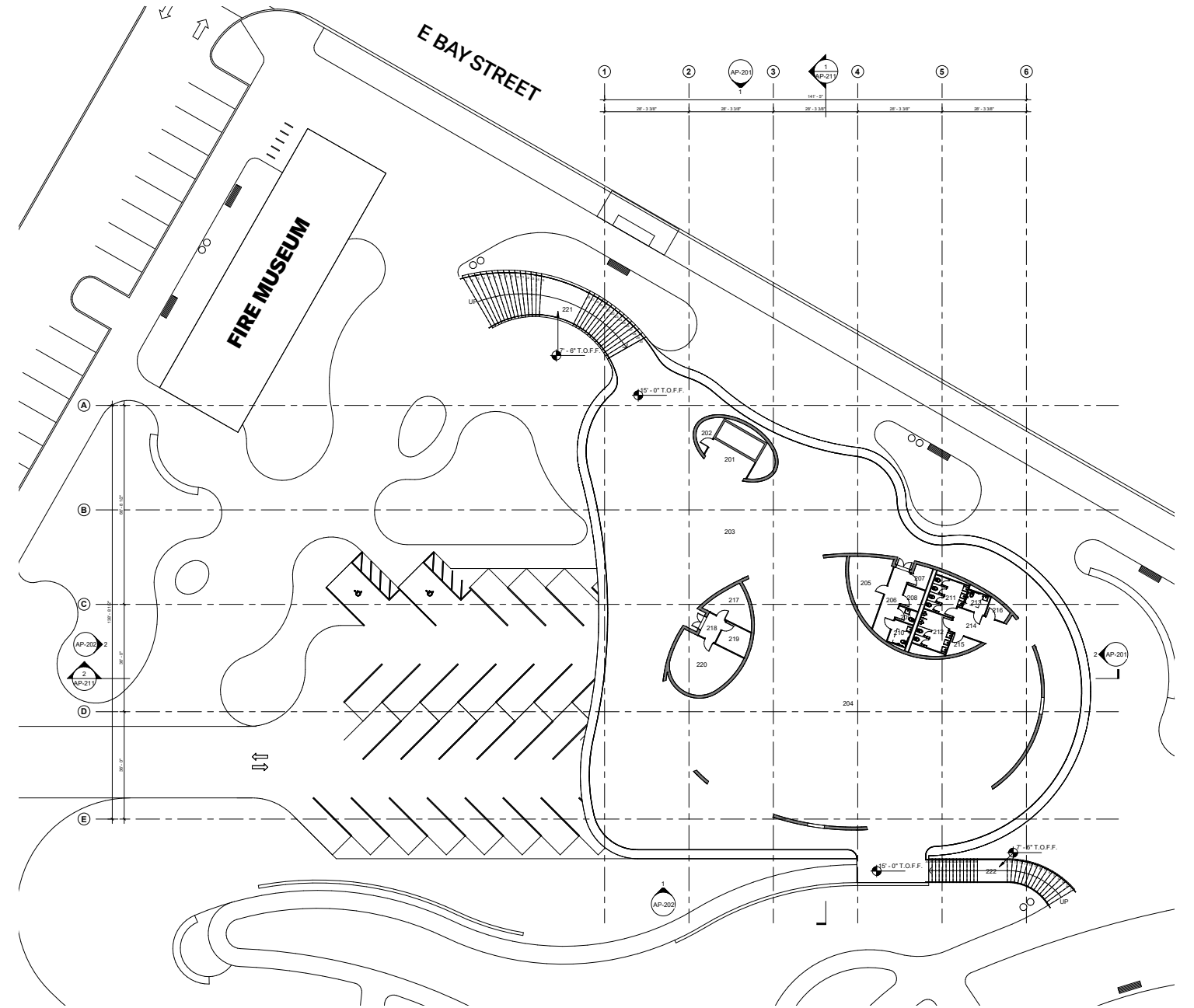


BUILDING MASSING

EVENTS PAVILION



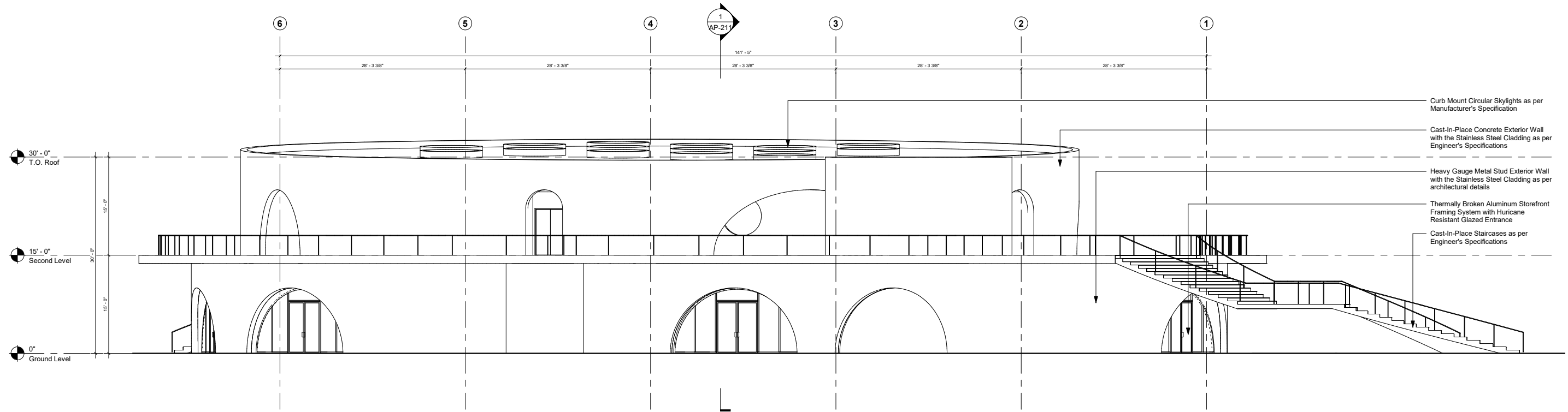
FIRST FLOOR



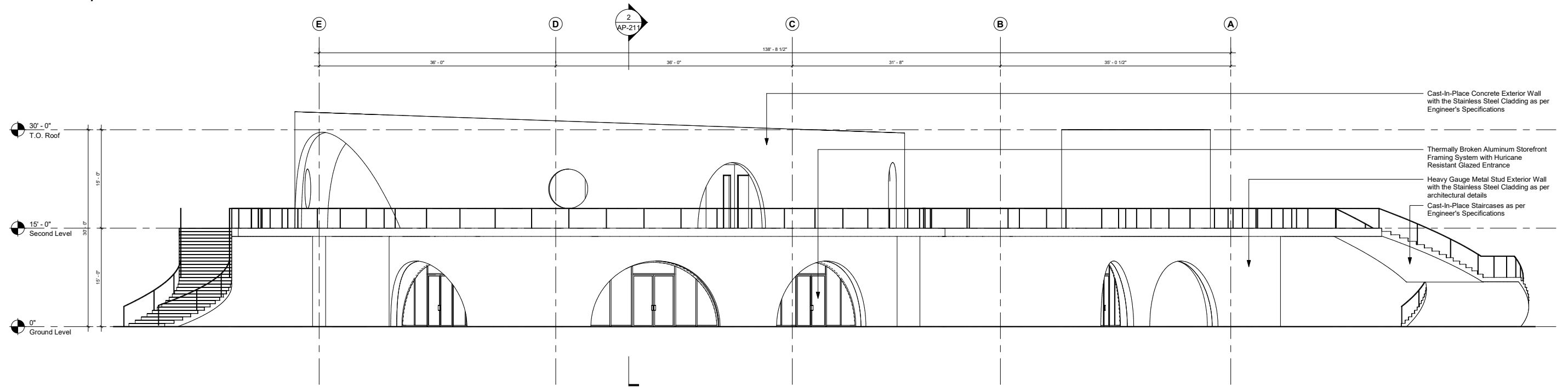
SECOND FLOOR

BUILDING MASSING

EVENTS PAVILION



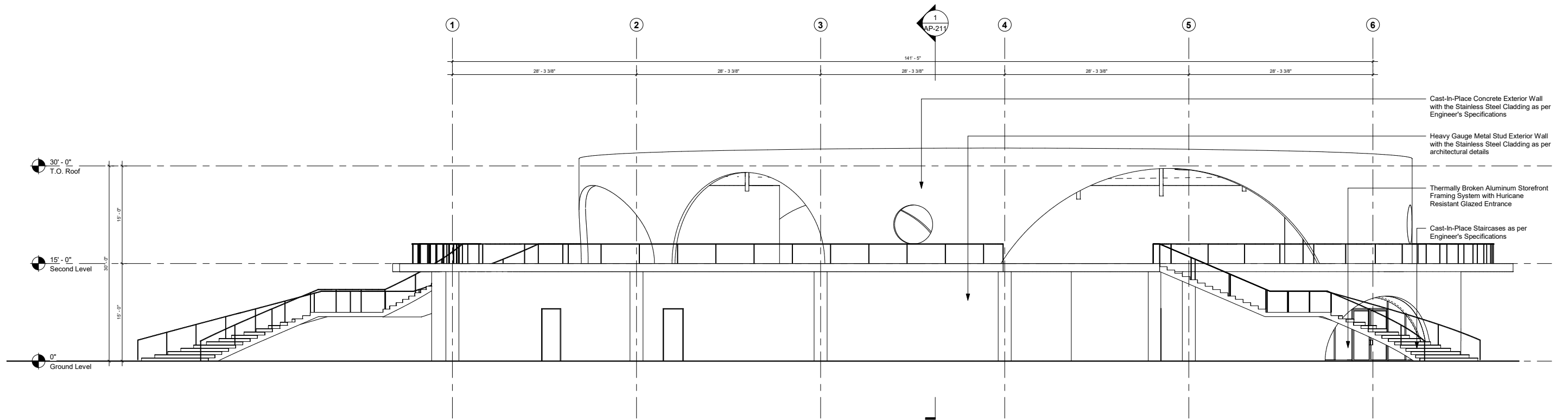
NORTH ELEVATION: 1/16" = 1'-0"



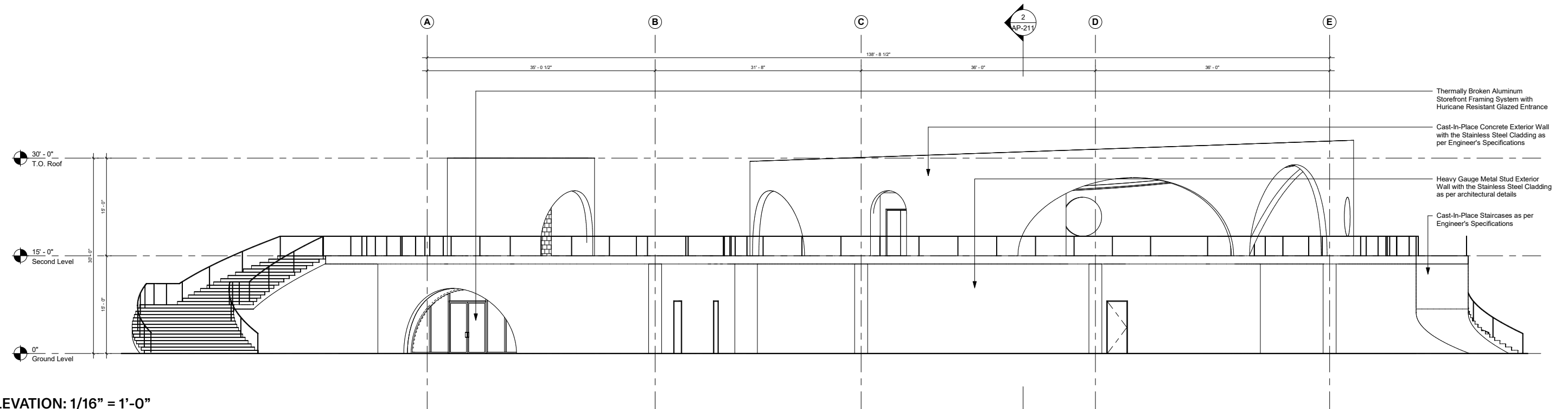
EAST ELEVATION: 1/16" = 1'-0"

BUILDING MASSING

EVENTS PAVILION



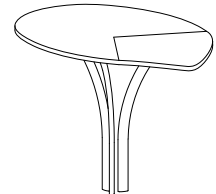
SOUTH ELEVATION: 1/16" = 1'-0"



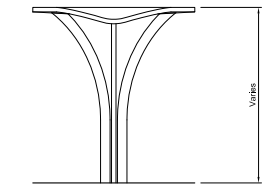
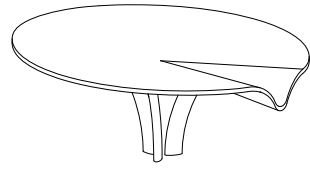
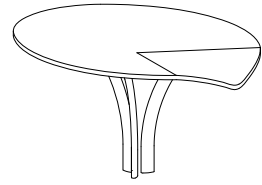
WEST ELEVATION: 1/16" = 1'-0"

BUILDING MASSING

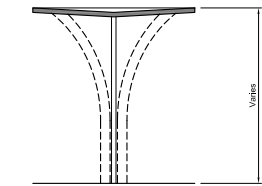
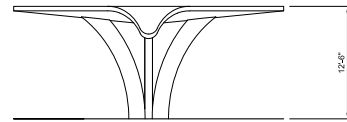
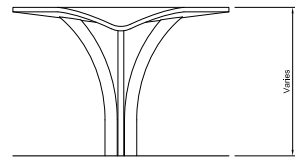
SHADE STRUCTURES



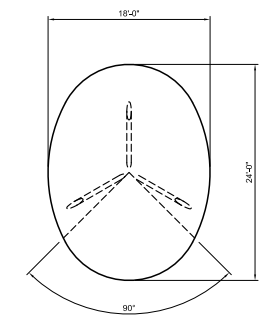
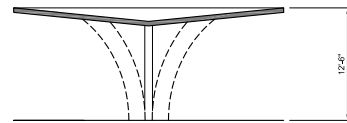
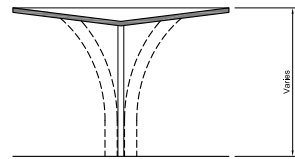
PERSPECTIVES



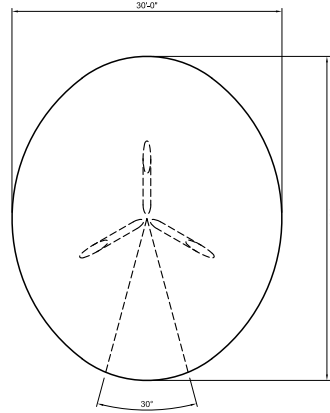
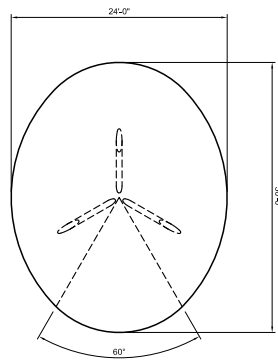
ELEVATIONS



SECTIONS



PLANS



1 TYPE A1
SCALE: 1/6" = 1'-0"

2 TYPE B1
SCALE: 1/6" = 1'-0"

3 TYPE C1
SCALE: 1/6" = 1'-0"

