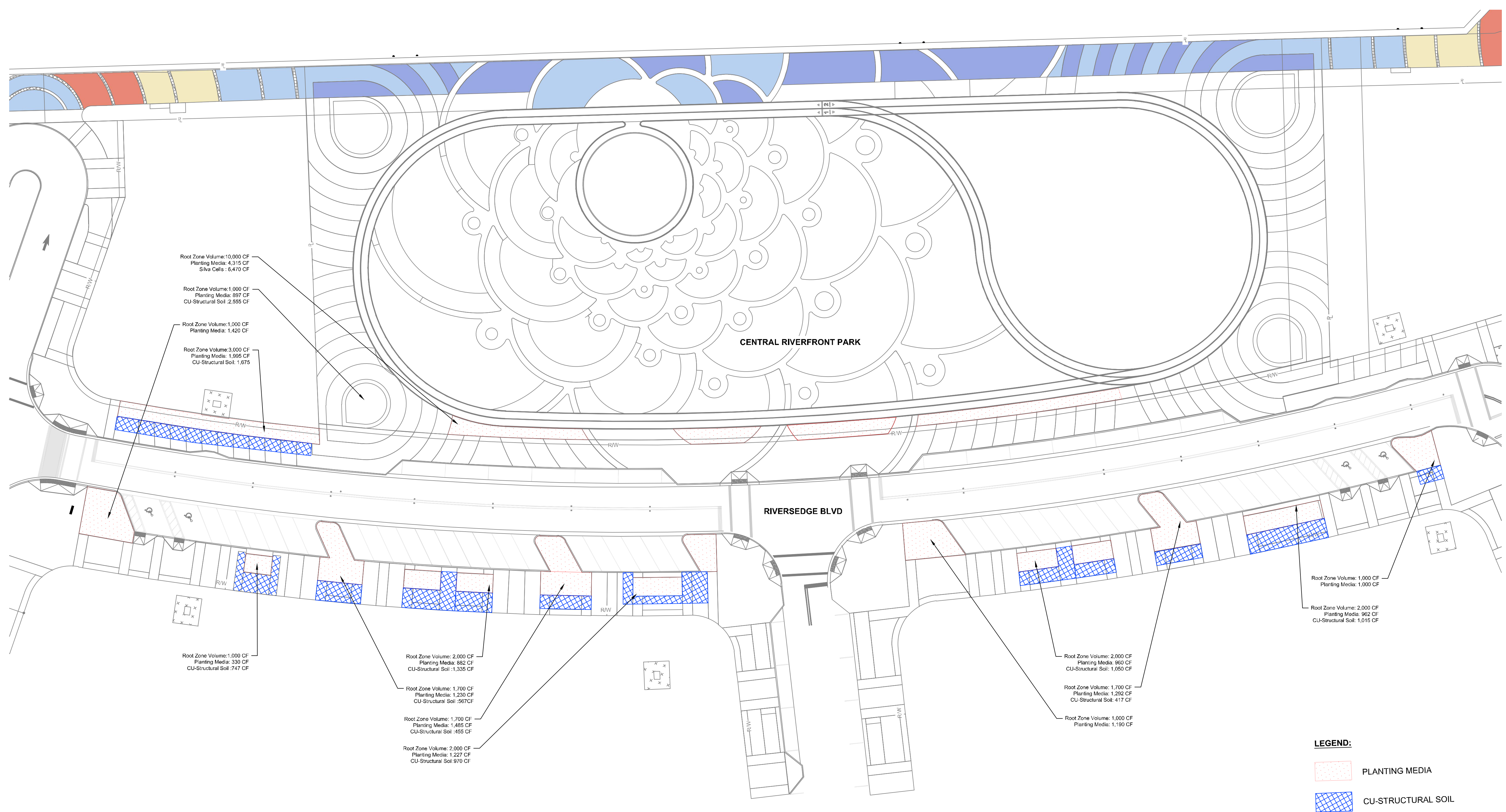


This document, together with the concepts and designs presented herein, is an instrument of service, is intended only for the specific purpose and client for which it was prepared. Reuse of and improper reliance on this document without written authorization and adaptation by Kimley-Horn and Associates, Inc. shall be without liability to Kimley-Horn and Associates, Inc.



1 STRUCTURAL SOIL LAYOUT
NTS

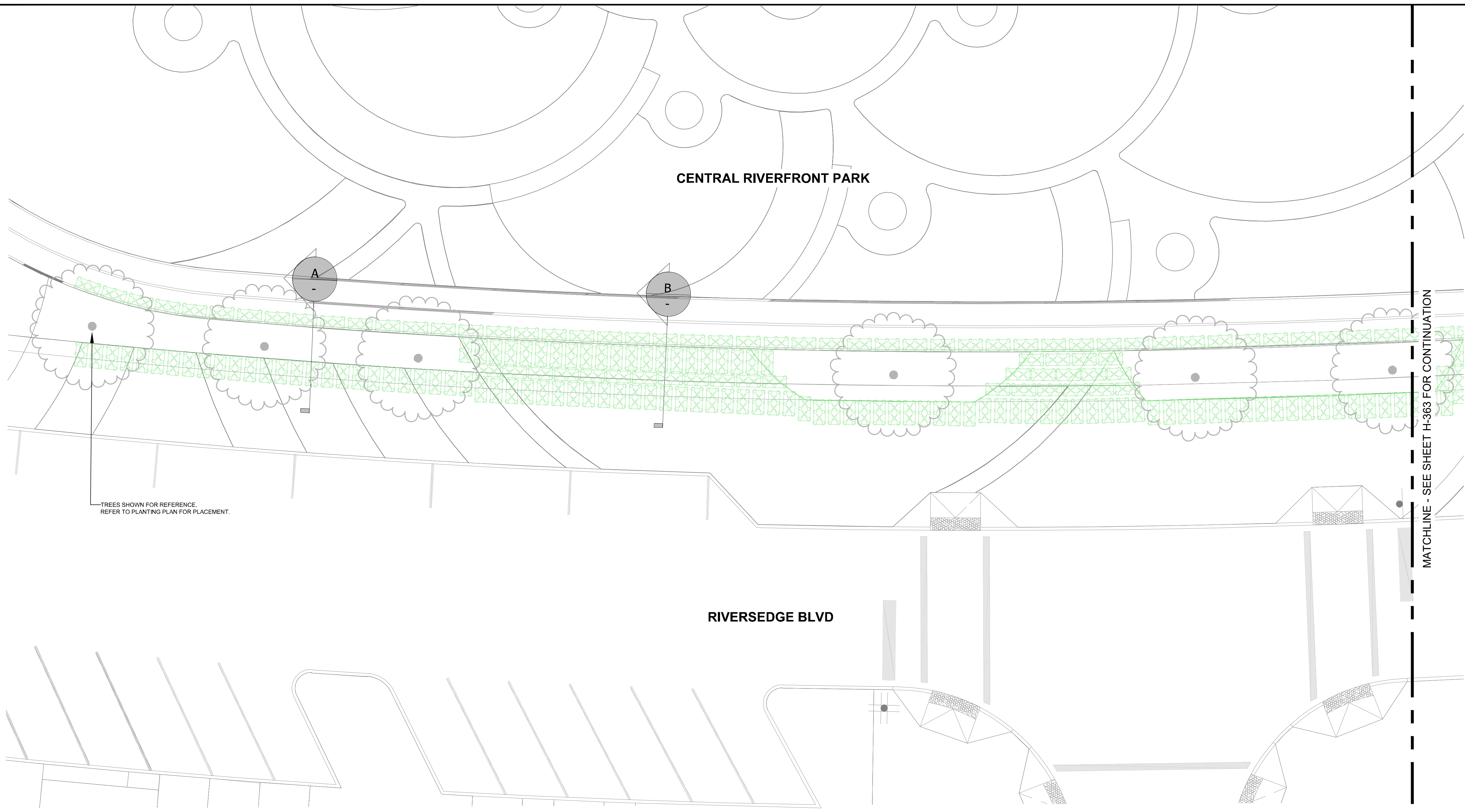
045-394-003-SILV-08

Sunshine811
Call 811 or www.sunshine811.com two full business days before digging to have utilities located and marked.
Check positive response codes before you dig!

KHA PROJECT 045394003	DATE OCTOBER 2024	DESIGNED BY: AKW DRAWN BY: AKW CHECKED BY: RMM	REVISIONS	DATE
	SCALE: AS SHOWN			9/6/2024
HARDSCAPE DETAILS		CITY OF JACKSONVILLE FLORIDA	SITE FURNISHINGS AND CONCRETE FINISH UPDATES	DATE
RIVERSEEDGE				9/6/2024
SHEET NUMBER H-361				DATE
				BT

Kimley-Horn
© 2024 KIMLEY-HORN AND ASSOCIATES, INC.
12740 GRAN BAY PARKWAY WEST, SUITE 2350
JACKSONVILLE, FLORIDA 32258
PHONE: 904-828-3900
WWW.KIMLEY-HORN.COM CA 00000696

This document, together with the concepts and designs presented herein, is an instrument of service, is intended only for the specific purpose and client for which it was prepared. Reuse of and improper reliance on this document without written authorization and adaptation by Kimley-Horn and Associates, Inc. shall be without liability to Kimley-Horn and Associates, Inc.



TREES SHOWN FOR REFERENCE.
REFER TO PLANTING PLAN FOR PLACEMENT.

MATCHLINE - SEE SHEET H-363 FOR CONTINUATION

1 SILVA CELL LAYOUT - PAGE 1
NTS

PLAN PROVIDED BY DEEPROOT. REFER TO MANUFACTURER FOR PLACEMENT OF SILVA CELLS, SPECIFICATION DETAILS, AND INSTALLATION REQUIREMENTS.

270 2x Silva Cells

DeepRoot Green Infrastructure, LLC.
1032 Irving Street, #614
San Francisco, CA 94122-2200
info@deeproot.com
Tel: 800 458 7668 or 415 781 9700
Fax: 800 277 7668 or 415 781 0191



www.deeproot.com

DISCLAIMER:
Silva Cell 2 layouts are preliminary, and are based on the accuracy of the provided base information. Layouts use 6" spacing by default. Spacing between Silva Cells can vary between 1-6". Field adjustment may be required.

Client/Contractor is responsible for verifying location of structures and utilities that may be in conflict with this proposed Silva Cell 2 layout. When determining size of excavation, allow space for Cells, spacing between frames, and backfill.

It is the contractor's responsibility to confirm proposed elevations with the engineer of record.

COPYRIGHT © 2023 | DEEPROOT GREEN INFRASTRUCTURE (ALL RIGHTS RESERVED)

045-394-003-SILV-03



Call 811 or www.sunshine811.com two full business days before digging to have utilities located and marked.
Check positive response codes before you dig!

KHA PROJECT 045394003	DATE OCTOBER 2024	DESIGNED BY: AKW DRAWN BY: AKW CHECKED BY: RMM	REVISIONS	DATE
	SCALE: AS SHOWN			No.
KIMLEY-HORN			SITE FURNISHINGS AND CONCRETE FINISH UPDATES	9/6/2024
© 2024 KIMLEY-HORN AND ASSOCIATES, INC. 12740 GRAN BAY PARKWAY WEST, SUITE 2350 JACKSONVILLE, FLORIDA 32258 PHONE: 904-828-3900 WWW.KIMLEY-HORN.COM CA 00000696				BT
HARDSCAPE DETAILS		RIVERSEDGE		SHEET NUMBER
CITY OF JACKSONVILLE		FLORIDA		H-362

This document, together with the concepts and designs presented herein, is an instrument of service, is intended only for the specific purpose and client for which it was prepared. Reuse of and improper reliance on this document without written authorization and adaptation by Kimley-Horn and Associates, Inc. shall be without liability to Kimley-Horn and Associates, Inc.



MATCHLINE - SEE SHEET H-362 FOR CONTINUATION

TREES SHOWN FOR REFERENCE.
REFER TO PLANTING PLAN FOR PLACEMENT.

PLAN PROVIDED BY DEEPROOT. REFER TO MANUFACTURER FOR PLACEMENT OF SILVA CELLS, SPECIFICATION DETAILS, AND INSTALLATION REQUIREMENTS.

2 SILVA CELL LAYOUT - PAGE 2
NTS

270 2x Silva Cells

DeepRoot Green Infrastructure, LLC.
1032 Irving Street, #614
San Francisco, CA 94122-2200
info@deeproot.com
Tel: 800 458 7668 or 415 781 9700
Fax: 800 277 7668 or 415 781 0191



www.deeproot.com

COPYRIGHT © 2023 | DEEPROOT GREEN INFRASTRUCTURE (ALL RIGHTS RESERVED)

DISCLAIMER:
Silva Cell 2 layouts are preliminary, and are based on the accuracy of the provided base information. Layouts use 6" spacing by default. Spacing between Silva Cells can vary between 1'-6". Field adjustment may be required.

Client/Contractor is responsible for verifying location of structures and utilities that may be in conflict with this proposed Silva Cell 2 layout. When determining size of excavation, allow space for Cells, spacing between frames, and backfill.

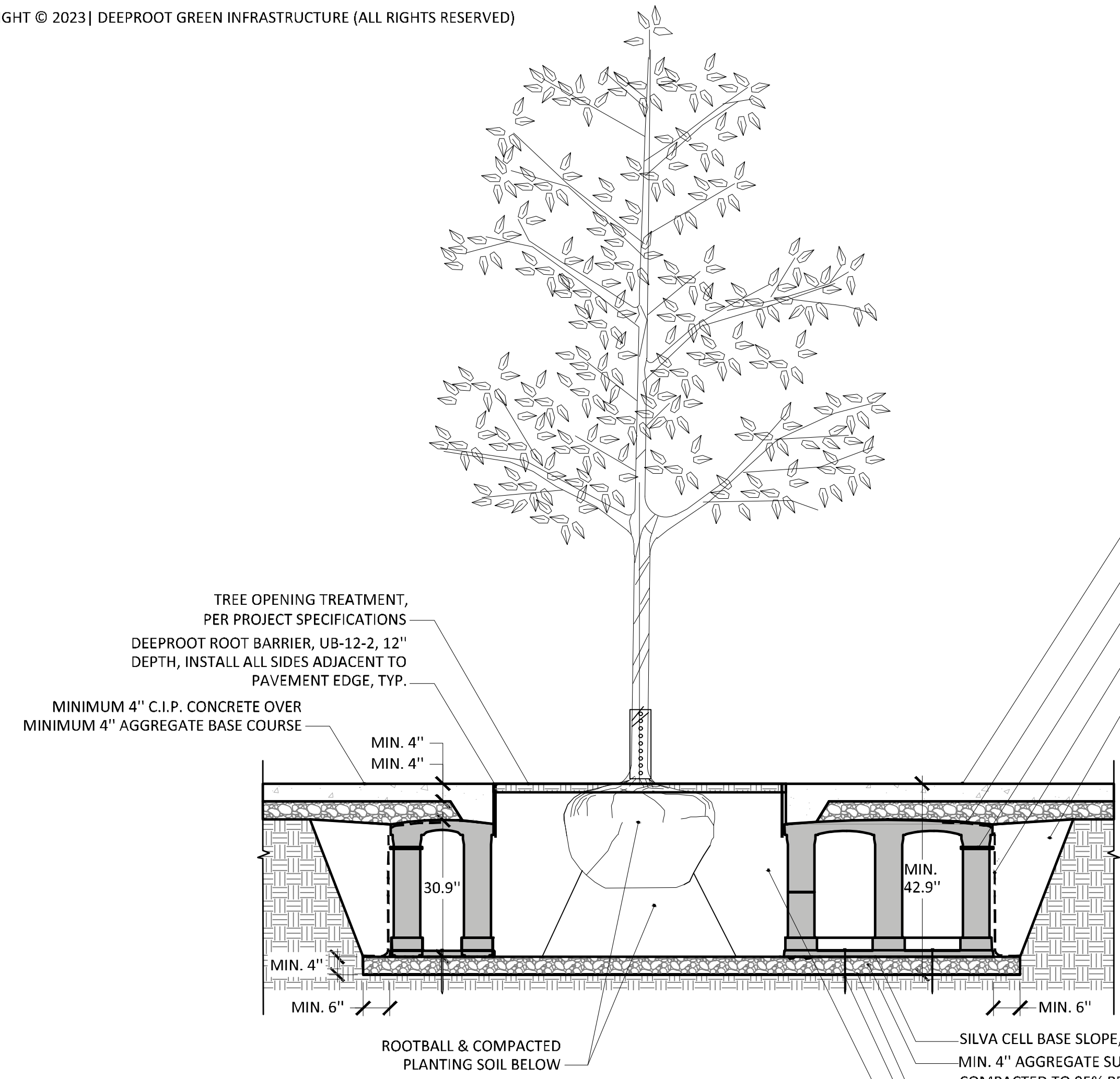
It is the contractor's responsibility to confirm proposed elevations with the engineer of record.

045-394-003-SILV-24
Sunshine811
Call 811 or www.sunshine811.com two full business days before digging to have utilities located and marked.
Check positive response codes before you dig!

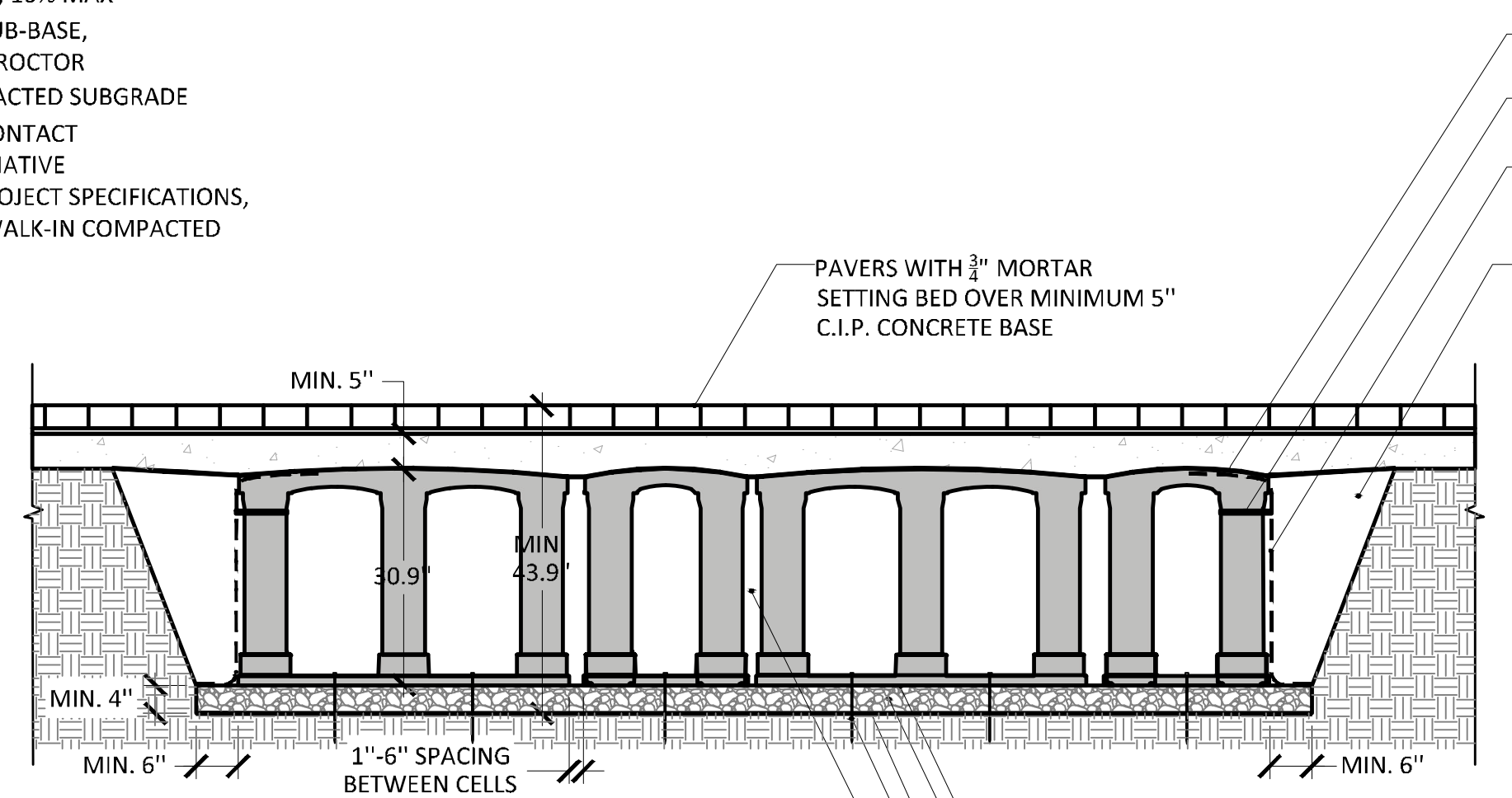
KHA PROJECT 045394003	DATE OCTOBER 2024	DESIGNED BY: AKW DRAWN BY: AKW CHECKED BY: RMM	REVISIONS	DATE	
	SCALE: AS SHOWN			No.	DATE
HARDSCAPE DETAILS			SITE FURNISHINGS AND CONCRETE FINISH UPDATES	9/6/2024	AKW
RIVERSEDGE					
CITY OF JACKSONVILLE					
FLORIDA					
SHEET NUMBER					
H-363					

Kimley >> Horn
© 2024 KIMLEY-HORN AND ASSOCIATES, INC.
12740 GRAN BAY PARKWAY WEST, SUITE 2350
JACKSONVILLE, FLORIDA 32258
PHONE: 904-828-3900
WWW.KIMLEY-HORN.COM CA 00000696

DETAILS PROVIDED BY DEEPROOT. REFER TO MANUFACTURER FOR PLACEMENT OF SILVA CELLS, SPECIFICATION DETAILS, AND INSTALLATION REQUIREMENTS.



A SILVA CELL SYSTEM BELOW CONCRETE PAVING AT TREE OPENING, 2x SYSTEM
NOT TO SCALE



B SILVA CELL SYSTEM BELOW PAVERS OVER CONCRETE BASE, 2x SYSTEM
NOT TO SCALE

270 2x Silva Cells

DeepRoot Green Infrastructure, LLC.
1032 Irving Street, #614
San Francisco, CA 94122-2200
info@deeproot.com
Tel: 800 458 7668 or 415 781 9700
Fax: 800 277 7668 or 415 781 0191



DISCLAIMER:
Silva Cell 2 layouts are preliminary, and are based on the accuracy of the provided base information. Layouts use 6" spacing by default. Spacing between Silva Cells can vary between 1'-6". Field adjustment may be required.

Client/Contractor is responsible for verifying location of structures and utilities that may be in conflict with this proposed Silva Cell 2 layout. When determining size of excavation, allow space for Cells, spacing between frames, and backfill.

It is the contractor's responsibility to confirm proposed elevations with the engineer of record.

045-394-003-SILV-04



Call 811 or www.sunshine811.com two full business days before digging to have utilities located and marked.
Check positive response codes before you dig!

KHA PROJECT 045394003	DATE OCTOBER 2024	DESIGNED BY: AKW	DRAWN BY: AKW	CHECKED BY: RMM	
	SCALE: AS SHOWN				
HARDSCAPE DETAILS					
RIVERSEDGE					
CITY OF JACKSONVILLE					
FLORIDA					
SHEET NUMBER H-364					
SITE FURNISHINGS AND CONCRETE FINISH UPDATES				REVISIONS	DATE
9/6/2024					AKW
No.					BT

Kimley-Horn
© 2024 KIMLEY-HORN AND ASSOCIATES, INC.
12740 GRAN BAY PARKWAY WEST, SUITE 2350
JACKSONVILLE, FLORIDA 32258
PHONE: 904-828-3900
WWW.KIMLEY-HORN.COM CA 00000696

This document, together with the concepts and designs presented herein, is intended only for the specific purpose and client for which it was prepared. Reuse of and improper reliance on this document without written authorization and adaptation by Kimley-Horn and Associates, Inc. shall be without liability to Kimley-Horn and Associates, Inc.

1 SILVA CELL SECTIONS
NTS