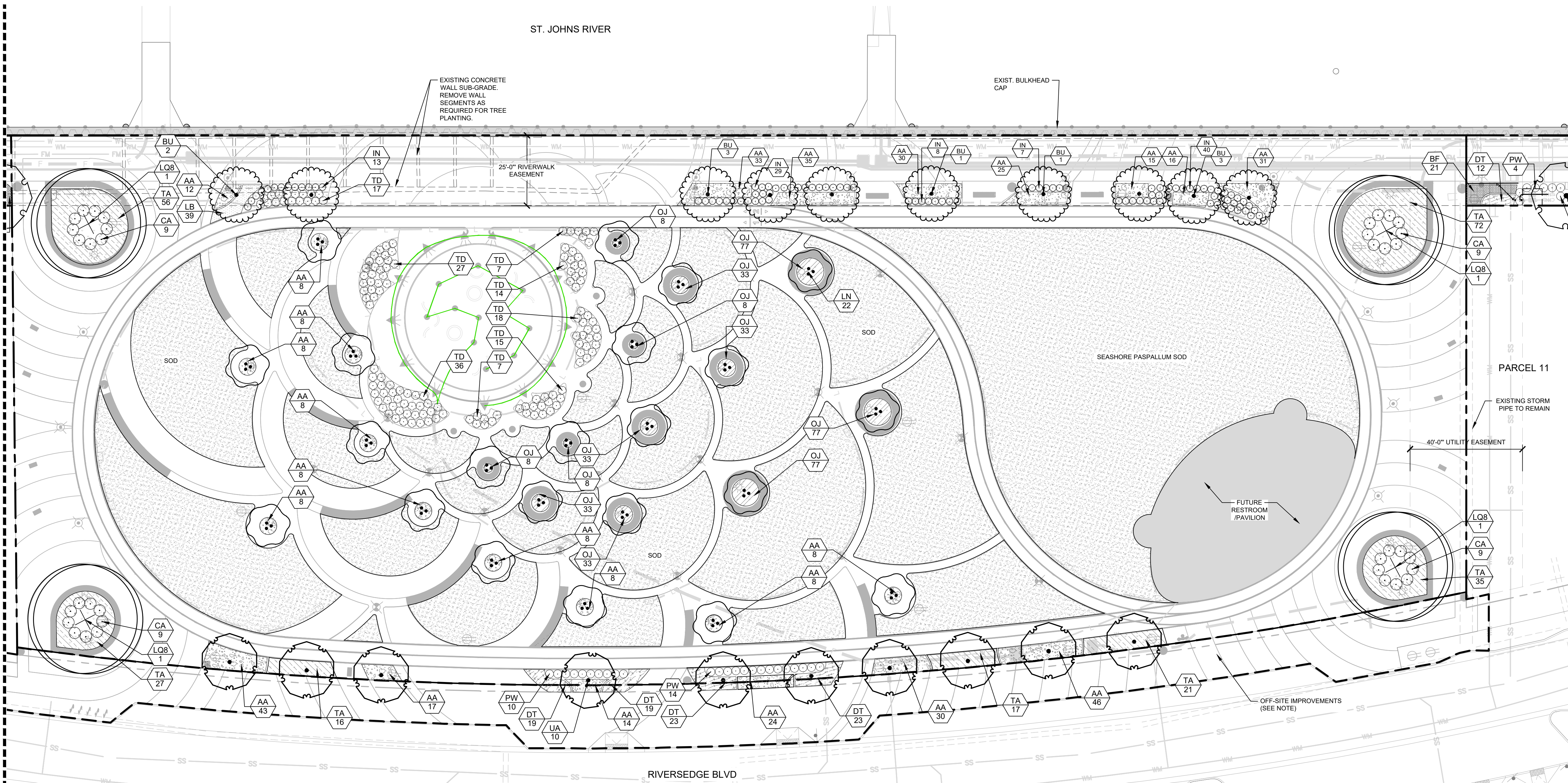


Plotted By: Waling, Anna - Sheet - Riv: Riverside - Parks - Layout: L-203 - January 08, 2025 - 12:59:35pm - K:\JAX_Maps\TheDistrict - MIA - CAD\ALP\PlanSheets\L-203 - PARKS AND RIVERWALK - LANDSCAPE PLANNING
 This document, together with the concepts and designs presented herein, is an instrument of service, is intended only for the specific purpose and client for which it was prepared. Reuse of and improper reliance on this document without written authorization and adaptation by Kimley-Horn and Associates, Inc. shall be without liability to Kimley-Horn and Associates, Inc.

MATCHLINE - SEE SHEET L-202 FOR CONTINUATION

MATCHLINE - SEE SHEET L-204 FOR CONTINUATION



PLANT SCHEDULE L-203

SYMBOL	CODE	QTY	COMMON / BOTANICAL NAME
CANOPY TREES			
	BU	10	BOSQUE ELM / ULMUS PARVIFOLIA 'BOSQUE'
	LQ8	4	LIVE OAK - 8" CAL. / QUERCUS VIRGINIANA
	UA	10	WINGED ELM / ULMUS ALATA
UNDERSTORY TREES			
	LN	22	NATCHEZ CRAPE MYRTLE / LAGERSTROEMIA INDICA X FAURIEI 'NATCHEZ'
SHRUBS			
	CA	36	CRINUM LILY / CRINUM ASIATICUM
	IN	97	DWARF YAUPON HOLLY / ILEX VOMITORIA 'NANA'
	PW	27	WHEELER'S DWARF PITTOSPORUM / PITTOSPORUM TOBIRA 'WHEELER'S DWARF'
GRASSES			
	TD	141	DWARF FAKAHATCHEE GRASS / TRIPSACUM DACTYLOIDES NANA

GROUND COVERS			
	LB	39	BIG BLUE LILYTURF / LIRIOPE MUSCARI 'BIG BLUE'
	AA	451	GETTY WHITE AGAPANATHUS / AGAPANATHUS X 'GETTY WHITE'
	BF	21	HALLMARK STALKED BULBINE / BULBINE FRUTESCENS 'HALLMARK'
	OJ	428	MONDO GRASS / OPHIOPOGON JAPONICUS
	PV	36,892 SF	SEASHORE PASPALLUM / PASPALLUM VAGINATUM
	TA	244	VARIEGATED ASIATIC JASMINE / TRACHELOSPERMUM ASIATICUM 'VARIEGATA'
	DT	96	VARIEGATED DIANELLA / DIANELLA TASMANICA 'VARIEGATA'

* REFER TO SHEET L-250 FOR FULL LANDSCAPE SCHEDULE

OFF-SITE IMPROVEMENTS:

- THE STREETScape IN THIS AREA IS NOT WITHIN THE CITY PARKS PROPERTY BOUNDARY. IT IS ON THE CDD PROPERTY.
 - THE CONTRACTOR WILL BE REQUIRED TO COORDINATE THESE IMPROVEMENTS WITH THE CDD.
- NOTES:**
- UNLESS OTHERWISE NOTED, THE PROPERTY LINES WILL SERVE AS THE LIMITS OF WORK.
 - UNLESS OTHERWISE NOTED, THE SOUTHERN EDGE OF THE BULKHEAD CAP IS THE LIMITS OF WORK FOR THE PARKS AND RIVERWALK IMPROVEMENTS.
 - THE SITE PLANS HAVE BEEN CREATED TO ILLUSTRATE THE IMPROVEMENTS TO BE CONSTRUCTED. SPECIFIC LAYOUT, DIMENSIONS, AND OTHER INFORMATION ARE CONTAINED WITHIN OTHER PLAN SHEETS IN THIS SET.

EXISTING SUB-GRADE NOTES:

- ALONG PORTIONS OF THE NEW BULKHEAD THERE IS THE POTENTIAL FOR CONCRETE STRUCTURES BELOW GRADE.
- IF ANY EXISTING STRUCTURES ARE ENCOUNTERED, THE CONTRACTOR WILL CONTACT THE PROJECT LANDSCAPE ARCHITECT FOR DIRECTION ON HOW TO PROCEED.

TREE MITIGATION NOTE:

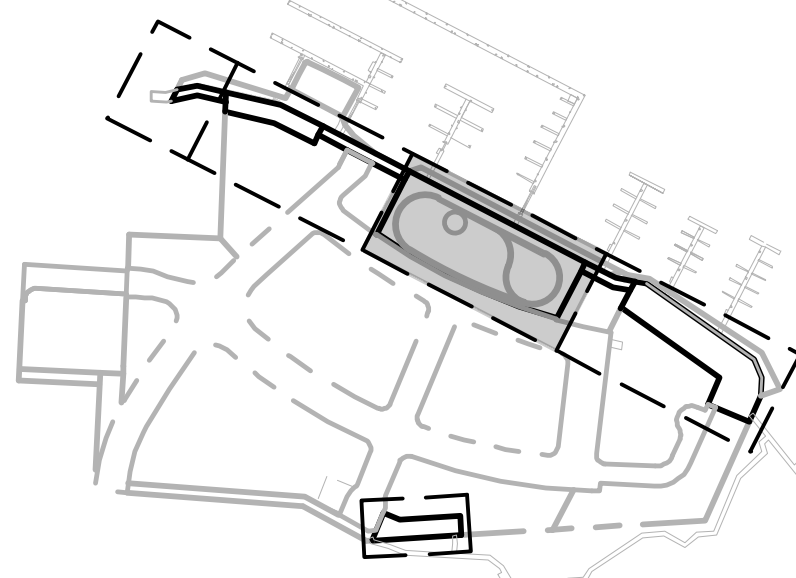
- TREE REMOVAL AND MITIGATION WAS PERFORMED DURING CDD 616.316. NO OTHER PROTECTED TREES ON SITE.

LEGEND:

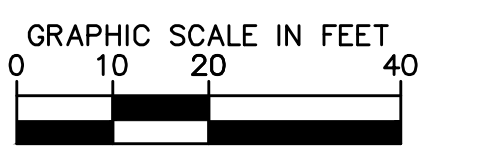
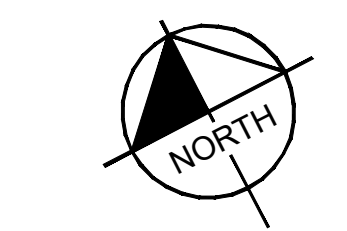
	PROPERTY LINE
	RIVERWALK EASEMENT
	JEA UTILITY EASEMENT
	MEAN HIGH WATER LINE
	HIGH TIDE LINE
	EXISTING WETLAND
	EXISTING RIP RAP
	FIRE HYDRANT

EXISTING SITE FEATURES LEGEND

	FO	FIBER OPTIC
	GAS	GAS
	HCS	HYDRAULIC CONTAINMENT SYSTEM
	STORM PIPE	STORM PIPE
	SS	SANITARY SEWER
	WM	WATER MAIN
	OHE	OVERHEAD ELECTRIC
	UGE	UNDERGROUND ELECTRIC
	JD	JURISDICTIONAL WETLAND



KEY MAP NOT TO SCALE



Always call 811 two full business days before you dig to have underground utilities located and marked.

 12740 GRAN BAY PARKWAY WEST, SUITE 2350 JACKSONVILLE, FLORIDA 32228 WWW.KIMLEY-HORN.COM CA 00000696	PROJECT: KIA PROJECT 04-5394003 DATE: DECEMBER 2024 SCALE: AS SHOWN DESIGNED BY: AKW DRAWN BY: AKW CHECKED BY: RMM	FOR LICENSED PROFESSIONAL OF RECORD SIGNATURE AND SEAL REFER TO SIGNATURE SHEET	REVISIONS No. DATE 1 10/8/2024 AKW PARK TREES, NE SWINGS, JUNCTION BOXES 2 9/6/2024 AKW SITE FURNISHINGS AND CONCRETE FINISH UPDATES
	MARC FORNES / THEVERYMANY 184 87th STREET BROOKLYN, NEW YORK 11201 PHONE: (917) 470-9871	CITY OF JACKSONVILLE SHEET NUMBER L-203	DATE BT