



A NEW DAY.

Tree Commission
Wednesday, July 17, 2024 – 9:30am-11:30am

PUBLIC MEETING NOTICE FOR ZOOM WEBINAR
AND Ed Ball Bldg., 10th Floor, Conference Room 5

Notice is hereby given that the Tree Commission will meet pursuant to State of Florida Executive Order 20-69 (Emergency Management-COVID-19-Local Government Public Meetings). These meetings are pursuant to City Ordinance 2017-397, Chapter 54.

Interested persons desiring to attend this meeting can do so in person at **Ed Ball Bldg., 10th floor, conference room 5** or via ZOOM using the following meeting access information:

Topic: Tree Commission

Time: Wednesday, July 17, 2024, 09:30 AM Eastern Time (US and Canada)

Join Zoom Webinar

<https://us02web.zoom.us/j/83035869934>

Meeting ID: **830 3586 9934**

Tree Commission Agenda: [Jacksonville.gov - Tree Commission](https://www.jacksonville.gov/tree-commission)

Interested persons who cannot attend this Zoom webinar but who wish to submit public comments to be read during the public comment portion of the meeting regarding any matter on the agenda for consideration at the meeting may do so by emailing Charles Hayes at kennethh@coj.net at least 2 hours before the meeting start time of 9:30am. A recording of this meeting will be made available after its conclusion upon request at kennethh@coj.net.

Jacksonville Tree Commission

Wednesday July 17, 2024, 9:30 AM
Ed Ball Building, 10th Floor, Conference Room 5
and Zoom

Commissioners: Curtis Hart, Chair
Susan Fraser
Chris Miller
Nina Sickler
John Moscarillo
William Burke
Patrick Howell

Advisors: Jonathan Colburn
Justin Gearhart
Shannon MacGillis
Jose Regueiro

Staff: Charles Hayes

AGENDA

Order of Agenda is Subject to Change

- 1. Call to Order - Chair**
- 2. Roll Call and Verification of Quorum – Chair**
- 3. Submittal of Speaker’s Cards – Chair**
 - a) A raised hand icon will be acknowledged by the Chair.
 - b) For those attending in person, paper speakers’ cards will be available.
- 4. Action Items:**
 - a) Approval of Minutes June 28, 2024 - Chair
 - b) Level 3 Project Proposal - **NONE**
 - c) Level 2 Project Proposal
 - i. Tree Plantings in Urban Areas to include Union St. and State St. – Justin Gearhart
 - ii. Gate Parkway – Justin Gearhart
 - iii. JTA Bus Stops Phase 1 – Justin Gearhart
 - d) Level 2 and 3 Guidelines Amended to Reflect Section 5 of Tree Bill (Ordinance 2024-438-E) – Shannon MacGillis
 - e) Task Force Implementation - Chair
- 5. Reports:**

- a) Financial Report for Ordinance Tree Fund (15304), Charter Tree Fund (15305) and BJP (Attachment D) – Jose Regueiro
- b) Fund Status of 630-CITY, Remove & Replace and Level 2 Programs (Attachment E) – Justin Gearhart
- c) Status of Level 2 Tree Projects (Attachment F) – Justin Gearhart
- d) Parks Department Project Update – Kathleen McGovern/Jill Enz

6. New Business:

- a) Climate Central Heat Island Study for Jacksonville – William Burke

7. Old Business:

- a) Recent Tree Fund Projects with Palm Trees in Lines – Justin Gearhart

8. Public Comment:

- 9. Adjournment** – Next meeting August 21, 2024, 9:30am-11:30am as a Hybrid/Webinar meeting in Ed Ball Building, 10th Floor, Public Works Office, conference room 5.

Jacksonville Tree Commission

Minutes

Friday June 28, 2024, - 9:00 AM

Via Zoom Platform & In Person

[Recording of Meeting can be obtained by sending request to
Charles Hayes kennethh@coj.net]

For approval July 17, 2024

Commissioners:

Nina Sickler, Director of Public Works
Curtis L. Hart, Chair (Council Appointee; 2012-0033-A)
Susan Fraser (Council Appointee; 2022-0063-A)
John Moscarillo (Mayor Appointee; 2023-0696-A)
William Burke (Mayor Appointee; 2023-0695-A)
Alden Howell (Council Appointee; 2021-2027-A)
Chris Miller Council Liaison

Advisors:

Jonathan Colburn - Urban Forestry Manager
Justin Gearhart - City Arborist
Carla Lopera - Office of General Counsel
Jose Regueiro - Accounting

Staff: Charles Hayes

1. Call to Order

Conducted by Chair

2. Roll Call and Verification of Quorum

Conducted by Chair

Commissioners present:

Curtis Hart, Chair
Susan Fraser
Nina Sickler
John Moscarillo
William Burke
Chris Miller
Alden Holden

Quorum present (4, in person): yes

3. Call for Public Speakers (online & card):

Aldan Pepke City of Jacksonville Office of Mayor intern
representing Angela TenBroeck COJ Urban Ag, Agriculture,
Agro-Ecology and Land Use Policy turned in speaking card.

Action Items:

1. Prior Meeting Minutes.

Issue: The minutes for May 15, 2024, pending approval

Motion: Approved May 15, 2024, minutes

Moved by: Nina Sickler

Second: William Burke

Vote: Approved, unanimous.

2. Financial Report: Jose Regueiro Briefed Financial Highlights as of May 31. (Highlights can be found (Jacksonville.gov - [Tree Commission](#))) Stated Combined revenues were \$4m, combined expenses \$4m, combined revenue for May 24 \$586k and combined expense \$427k which created a net private sector terminology of \$158k, unappropriated and unallocated including BJP were \$24m and funds was approved to be moved and should show on June statement, Ordinance fund YTD has favorable net of \$7K.

3. Fund Status of 630-City, Remove & Replace, and Level 2

Programs: Justin Gearhart Briefed as of June 1, 2024, remove & replace was \$220,000 will go up by 2.6m once money is moved, 630-CITY \$2.3m, Level 2 \$3.3m, Level 3 \$1.5m. This was prior to the bill passing and numbers will change but may not be reflected until July, however it will be reflected in Jose Regueiro's accounting statements.

4. Level 2 Updates:

Gearhart Briefed Kernan Blvd, Ft. Caroline Rd, Norfolk Soutel, and Whitehouse Park are off warranty. Stated Aldin Rd. did get through MBRC and is getting scheduled. Briefed completed project list that the Commission requested in the May meeting.

5. Parks Department Project Update:

Jill Enz Briefed Lift Ev'ry and Sing Park were complete, Northbank Riverwalk and Southern S-line is 80% complete but holding off on planting due to the dry weather and rain.

6. New Business:

Late Bloomers Presentation: Deborah Early Read prepared remarks (see Attachment A). **Natalie Rosenberg** suggested adopting a policy of 10% cap of palm trees rather than 25% when using tree mitigation funding.

Motion: NONE (general discussion on recording)

7. Old Business

Jonathan Colburn - Urban Forestry Manager read BRINGING ORDER TO THE TECHNICAL DYSFUNCTION WITHIN THE URBAN FOREST by James Urban article. (see Attachment 2) He went through the UF IFAS Tree Planting Site Evaluation Tool and Check list <https://floridatrees.ifas.ufl.edu/FloridaTrees/site-analysis.html>. Explained that the minimum design specifications for the city occurs at a couple of levels, the professional level and the level the Tree Commission wants. Asked how to facilitate getting the two levels needs met.

Motion: NONE (general discussion on recording)

8. Public Comment

Aldan Pepke City of Jacksonville Office of Mayor intern representing Angela TenBroeck COJ Urban Ag, Agriculture, Agro-Ecology and Land Use Policy stated a request to add Florida King peach and pecan trees to the approved species list. Stated they are a characteristic of this area and support the community and bring a variety of fruit and nut trees.

Motion: NONE (general discussion on recording)

9. Prior to Adjournment

Fraser stated needed to get ball rolling on the Task Force or Sub-Committee.

END OF MEETING 10:07AM

DRAFT

ATTACHMENT 1

Tree Commission Remarks June 28, 2024

We are here today as members of the civic and conservation committees of Late Bloomers Garden Club.

We've all been reading about the heat dome and sweltering temperatures over much of the country this summer and more importantly, we are FEELING it every day here in Jacksonville. This summer has reinforced for us the critical need for shade and the importance of the work done by this commission. Thank you for all you do for the city.

As you know, *planting trees* is the quickest, most effective antidote to heat and other climate related challenges...but *all trees are not created equal* in that regard. Palm trees vs oaks and other similar species? There is no comparison. Larry Figart, UF urban forester wrote an article wondering if palm trees are really trees at all?

After reading Mr. Figart's article and speaking with him on the phone, although it seems that you can argue both ways as to whether palm trees are more of a tree or a grass, here are some important *things to know about palm trees that are not debatable*:

1. Palm trees are more susceptible to **lethal bronzing disease** which can spread
2. Palm trees have **higher maintenance costs** than shade trees because frequent pruning and fertilization is required (and it is our understanding that we do not have the resources in Jacksonville to maintain palms as recommended)
3. Palm trees do not provide the **environmental benefits** of other trees including:
 - a. **Providing Shade**
 - b. **Sequestering significant amounts of Carbon;** and
 - c. **Providing a habitat for wildlife.**

Oak trees, for one example, are *better at sequestering carbon* than palm trees because oaks have more wood and leaf surface area. Trees that have a more extensive root system, larger trunk and branches and a broad canopy have more biomass to store carbon. In fact, over a 25-year period, a live oak could sequester almost **14,000** pounds of carbon whereas a cabbage palm would only sequester about **461** pounds over that same time period. Oaks and other shade trees also provide *habitat and food for countless species*, from birds and insects to mammals. Trees with large canopies offer nesting sites for birds and shelter for animals, while their leaves, flowers, and fruits serve as food sources throughout the year.

We wanted to make you aware of *major palm tree-related changes being made in south Florida*. Both West Palm Beach and Miami Beach, Florida (communities that are far more associated with palm trees than Jacksonville) have *recognized the many shortcomings of palm trees*. They are being more *intentional* in their approach to tree planting and they are taking the initiative to plant other trees that are *more adept at handling changing climate conditions*.

West Palm Beach for example no longer uses their tree mitigation funds to plant ANY palm trees

Miami Beach is also joining the initiative to shift their planting priority to a variety of trees -- just not palms. Miami Beach has an urban forestry master plan which details the environmental benefits of planting shade trees, including species such as oak, ash, elm and sycamore, rather than palms.

In addition to the need to be smart about which trees to plant, these communities are also *recognizing the need to put more focus on saving the older trees* they already have. Older trees are exponentially better for stormwater runoff, cleaning the air, shade and biodiversity.

The Asks:

Some specific changes that we think you can make NOW are to:

Adopt a 10% cap on palm trees-We urge you to change the policy allowing for up to 25% palm trees to be incorporated into planting projects paid for with tree mitigation funds. We believe that 10% is a better number for palm trees paid for with public funds since these trees are more work, more susceptible to disease, and unable to provide shade or meaningful environmental benefits. We believe that *public funds would be better spent on other trees* and palms are simply not a viable tree replacement since replacing a mature oak tree with a palm tree is not a one for one swap by any measure.

- Since West Palm Beach has decided to spend \$0 on palm trees, we believe that asking to limit our planting projects to 10% palms is a good compromise.
- Setting this standard would encourage developers and designers to *limit use of palm trees in the plans before they ever get to this commission* for approval thus eliminating the need to quibble over how many palm trees are included and to *encourage them to design their projects to allow for larger planting areas* or to incorporate innovations like silva cells or structural soil innovations that allow for the planting of larger trees in smaller areas.

Adopt guidelines for planting palm trees-We also request that you revisit how applicants are planting palm trees and adopt some helpful guidelines.

- We believe that palms should be treated as an accent tree only
- Rows of palms planted close together can be very *aesthetically off-putting* but also, if *disease strikes* one of the trees, they may all go. We request that more of an emphasis be placed on planting a *variety of species* to mitigate against disease problems and that you discourage closely planted rows of palms in most every case.
- With regard to applicants who desire to plant a *clump of palm trees*, we ask that those applicants be required to *demonstrate* why it makes sense to pay for *multiple palm trees* when *one shade tree* in the same spot may be a better alternative from a cost perspective and for our long-term shade canopy and climate mitigation efforts. Although clumps of palms can

provide more shade than a single palm, the fact is that the amount of shade provided by the palm clump will never increase whereas a well-placed *shade tree keeps expanding its cover* over time.

Policies to protect Mature Shade Trees-Finally, we request that you strengthen our policies *to protect mature shade trees*. The research is very clear that mature trees are superior to new ones and we must do a better job of protecting our mature trees where possible. Not only do mature trees offer more shade but mature trees have been shown capable of adapting and increasing their rates of photosynthesis in response to higher levels of CO2.

The bottom line is that shade trees simply provide *more bang for the buck*. In our time here today, we could not cover everything but when shade trees are planted in the right spot and well-maintained, they provide many *economic and social benefits* in addition to the environmental ones that we have spoken about today. We hope that this commission will adopt our proposed policies to start getting *more bang for our tree mitigation fund bucks*.

Thank you so much for your time, for all that you do and for allowing us to speak to you today. We will follow up in the next few days and get you our recommendations in writing as well as the information about West Palm Beach and Miami Beach.

BRINGING ORDER TO THE TECHNICAL DYSFUNCTION WITHIN THE URBAN FOREST¹

by James Urban

In order to increase the success rate of trees planted in the urban environment, there must be a significant change in the way trees are planted. The wide diversity in soil conditions found within urban areas suggests that there should be modifications to planting details from one site to another. The profession of urban forestry and landscape architecture, however, continue to use the same planting details regardless of the quality of the existing soil. Further, no protocol exists to guide the decision making process to determine when to use different methodologies.

This paper will present the framework for such a methodology and a series of possible changes to the way trees should be planted. The methodology is based on quantifiable levels of urbanization and soil quality, and proposes a logical approach to the design of planting details.

A major impasse to the development of a healthy urban forest is the technical dysfunction within the professions of urban forestry and landscape architecture with respect to the details of planting trees. The average professional knows little about how a tree actually grows. They are not skilled in the mechanics and dynamics of soil, roots and water and they are not aware of the impact these dynamics have on performance. Current planting practices are designed for the most benign sites; where soil is generally suitable to support root growth, is well drained, and is available in large quantities. Unfortunately, the urban forest is a continuum of soil conditions which range from these good sites to sites that have little or no drainage and where the soil is of such inferior quality and structure that it will not allow root penetration or function.

Urban forestry practices have largely relied on tree selection or "the right tree in the right place" as the primary method to overcome more difficult

sites. Current research suggests that many urban sites are so severe that no species will reliably work. Modification of the site soil and drainage capability is often the only solution to successful growing of trees. On better sites, modification of the planting area could be used to broaden the number of species that will be predictably successful.

Predictability and success are the key words. When a professional forester or landscape architect is relied upon to specify a tree planting, the person investing in the cost of the tree should have some reasonable assurance that the tree will grow to meet some predetermined level of success. It is one of our profession's obligations to either ensure that the site is made suitable for the trees' growth potential or to define for our clients how much growth they should expect out of a given tree in a given site.

Site modification, however, is expensive and requires specific solutions for each problem. Currently, there are few guidelines or standards to assist in the designing of site modification procedures. Practitioners who attempt to propose new planting details are often viewed as extravagant and individual designers often come up with widely varying solutions to similar problems. The following protocol is proposed to begin to set standards for site modification and the design of planting sites. It is designed as a guide to help predetermine how much site modification is necessary to successfully grow large trees. The protocol is based on the principle that soil is the primary factor influencing tree growth in urban areas. It is necessary for a tree to have access to sufficient rooting space in order to grow properly. Since both soil quality and soil quantity are critical to the equation, a methodology is proposed to accommodate each factor.

1. Presented at the annual conference of the International Society of Arboriculture in Philadelphia in August 1991.

July 12, 2024

Mr. Dave McDaniel
Chief, Mowing & Landscape Maintenance Division
609 St Johns Bluff Road
Jacksonville 32225

RE: Proposal for Professional Design Services to Develop Design Requirements for Tree Plantings in Urban Areas to include Union St. and State St.
Duval County, Florida
COJ Contract #: P-32-20 – Landscape Architectural & Support Professional Services

Dear Dave:

Thank you very much for this opportunity to submit a proposal for professional design services to provide landscape architectural services to Develop Design Requirements for Tree Plantings in Urban Areas to include Union Street and State Street. This project includes developing street tree planting plans for approximately 2.3 miles on Union Street and State Street, starting near the I-95 ramps heading east to the west side of Liberty Street, see attached Exhibit 'A'.

The scope of services described in this proposal entails the development of preliminary design level overall plans, which after your approval, we will then proceed with preparing final construction / bid documents. Below is the scope of services, based on our recent site visit and additional discussions.

Project Scope

Develop Design Requirements for Tree Plantings in Urban Areas – In coordination with the City's Arborist, develop guidelines for tree plantings within City rights of ways. To include recommendations and details for:

- Review of regulatory design controls to include FDOT Multimodal Access Management Guidebook, FDOT Design Manual, ADA and PROWAG guidelines
- Tree selection and tree design recommendations
- Modular sub-grade pavement systems (Silva Cells), potentially utilizing structural soils.
- Tree planter locations and sizing
- Tree support and staking
- Utility conflicts both overhead and below ground
- Soil testing and associated soil amendments and modifications
- Tree Irrigation systems, sleeving and controls
- Permitting

- Maintenance guidelines

Develop Tree Planting and Hardscape Plans along the shoulders of Union Street and State Street, per attached Exhibit 'A', to include:

- Demolition plans, details & notes
- Modifications to existing street tree planting areas to remain
- Modifications to existing hardscape areas for new planting areas
- Layout plans for plantings areas
- Tree planting plans and details
- MOT Plans and Details
- City technical specifications

Task #1 - Survey, Base File Preparation & Tree Planting Preliminary Plans

Prosser|PrimeAE will begin by obtaining a professional survey from our subconsultant, Smith Surveying, see attached proposals. The survey areas are limited to the roadway shoulders as identified in Exhibit 'A', attached. The survey will identify various paving types, curb openings, existing tree planters, and all hardscape elements, excluding areas within the travel lanes. The survey also includes a comprehensive subsurface utility engineering (SUE) locations, Quality level "B" investigation and Quality level "A" to visually verify utility locations. A total of 40 test holes to visually verify utilities are included. The survey and SUE locations will serve as the base plan for the tree planting design plans. A SUE report will be developed upon the completion of the fieldwork. Prosser|PrimeAE will perform site reviews to ground truth the survey and note additional information that may not have been included on the survey, to obtain the necessary information to develop the project base file.

Prosser|PrimeAE will obtain professional geotechnical services to include the sampling of existing and proposed tree planting areas from our subconsultant, CSIGeo, see attached. The scope of services includes a total of fifty (50) soil tests will be performed to a depth of 5 feet. The soil testing will include an analysis of the subsurface soil profile, identify water table elevation if encountered and organic content percentage. Also include is an option to provide soil fertility test, per UF/IFAS lab tests. The field testing by the geotechnical engineer will be coordinated with the City's Arborist's should they desire to review the field processes.

Based on information provided from the survey and geotechnical testing, Prosser|PrimeAE will then develop a preliminary level tree planting design for the project limits, per Exhibit 'A'. We understand the landscape design is envisioned to be limited to trees only, with potentially shrubs and groundcover beds limited to tree planter areas, with all plantings occurring along the roadway shoulders. In accordance with the tree planting recommendations developed in the above task, tree planting designs may include modifications to existing tree planters to promote long term tree success. New planter areas will be developed along the roadway shoulders, where

appropriate. Conflicts with both overhead electric lines and underground utilities will be critical to coordinate for tree plantings. It is envisioned that some of the existing trees will be removed due to poor health of the trees, with new planting areas designed to provide the appropriate area for sustainable tree growth.

The design plans will be in plan view only, describing the various tree and hardscape designs along with soil modifications for the project limits. The preliminary plans will include a plant schedule with specifications for the proposed plantings, as well as illustrating the existing conditions that we have compiled. A Conceptual Opinion of Probable Construction Cost will be developed.

The preliminary plans will be prepared in black and white only, and then submitted to the City for review. Prosser|PrimeAE will receive comments from the City, incorporating them into the final preliminary design plans. A total of one revision to the preliminary plans is included. The final preliminary plans and cost opinion will be used to submit to the Tree Commission, per Task #3 below.

The following will be provided in final form:

- a. Professional Survey
- b. Geotechnical Report on Tree Planting Areas
- c. Preliminary Landscape Plan
- d. Landscape Construction Details
- e. Conceptual Opinion of Probable Construction Cost

Task #2 - Jacksonville Tree Commission, DDRB, FDOT and COJ Permit Plans

We will coordinate with the City for submission of plans and materials to the Tree Commission. Attendance by a Prosser|PrimeAE Landscape Architect to a Tree Commission meeting with the associated is included.

The project limits are within the Downtown Overlay Zoning Code which requires application and presentation to the Downtown Development Review Board (DDRB).

Prosser will develop a project plans package to be submitted to FDOT to obtain an Access/Driveway Permit, as well as to the COJ for 10-set approval. A pre-application meeting will be held with FDOT to review the project and the City's goals & objectives. Revisions to the permit plans and resubmittals to the permitting agencies are included as needed to obtain permits. Application fees for permitting are not included.

The following will be provided in final form:

- a. Landscape Permit Plans
- b. Landscape Permit Details
- c. DDRB Application & Presentation
- d. FDOT Access Permit Application and Submittal(s)
- e. COJ 10-Set Application and Submittal(s)

Task #3 - Construction / Bid Documents

Upon approval by the Tree Commission and the City, Prosser|PrimeAE will incorporate any comments and then prepare construction level planting plans to include tree planting locations, plant schedule, notes as well as special planting details.

The construction documents will be submitted to the City at 90% completion for review and comments. We will incorporate all comments from this review to complete 100% plans set. Maintenance of Traffic (MOT) design plans and details are included in this scope. The Opinion of Probable Construction Cost will be updated at each of the submittals.

The following will be provided in final form:

- a. Demolition Plans, Details & Notes
- b. Landscape/Hardscape Construction Plans
- c. Landscape/Hardscape Construction Details
- d. MOT Design Plans and Details
- e. Updated Opinion of Probable Construction Cost

Task #4 – City Technical Bid Specifications

Prosser|PrimeAE will assist the City with the preparation of a bid specification book. The focus for Prosser|PrimeAE's efforts will be project specific specifications limited to sections #30 Scope of Work, #31 Special Conditions, #144 Landscaping and Irrigation specifications. The specification sections will be submitted for review by the City, with comments incorporated into the final submittal. The City shall supply Prosser|PrimeAE with the applicable City standard sections, as well as coordination with Procurement as required to obtain approval. All submittals will be electronic, with the final submittal in electronic format only.

The following will be provided in final form:

- a. Technical Specification sections as listed above

Task #5 – Urban Tree Planting Recommendations

Prosser|PrimeAE will begin by coordinating with the City's Arborists to review and understand the information that they have compiled in reference to urban tree plantings. A review of the latest available industry practices and recommendations will be completed for the project scope as listed above. Information will be compiled into a report with technical information, illustrations, and details. The report will be submitted to the City for review, then revised one time to address any comments.

The following will be provided in final form:

- a. Urban Tree Planting Report

Task #6 – Meetings & Project Coordination

During the execution of these services, Prosser|PrimeAE will discuss the project as needed with various City staff. This subtask includes meetings, correspondence, project coordination with the City, and associated relevant entities regarding the

project. This task does not include meetings or coordination with those included with each task. We have allocated twenty-five (25) project coordination meetings with City staff.

Task #7 – Construction Administration (Time & Materials – Limiting Amount)

It is anticipated that Prosser|PrimeAE’s efforts during construction will be limited to reviewing material submittals, coordination of construction related questions and site reviews during critical construction efforts. We may also participate in performing a substantial completion and/or final inspection resulting in development of punch lists for your use. This work will be performed on a time & materials basis, an initial budget has been included.

Task #8 – Irrigation Plans (Optional)

These optional services consist of the development of irrigation plans for the proposed tree planting improvements. In discussions with the City, it is our understanding that an irrigation system was previously installed. However, over time the irrigation system has fallen in disrepair and has been turned off. The long-term success of tree plantings require appropriate moisture levels to reduce stress to the trees. The irrigation plans will be coordinated to provide irrigation to all proposed tree plantings. Preliminary level irrigation plans will be provided to submit to the Tree Commission, as may be required. Construction irrigation plans will be included with the construction documents set, per Task #4 above.

The following will be provided in final form:

- a. Irrigation Construction / Bid Plans
- b. Irrigation Construction / Bid Details

Fee Amount:

See attached Fee Summary for additional information:

Tasks# 1 thru #6	Total Fee:	\$235,839.80
Task #7 Irrigation (Optional)	Total Fee:	\$27,500.00
Task #8 – Construction Administration (Time & Materials Budget)	T & M Budget:	\$28,017.18
Reimbursable Expenses	Lump Sum:	\$1,440.75
Prosser Fee	Sub-Total:	\$292,797.72
Surveyor – Smith Surveying Group	Lump Sum:	\$423,325.16
Geotechnical Engineering	Lump Sum:	\$18,564.17
	Total	\$734,687.06

Mr. Dave McDaniel
Professional Design Services for Design Requirements for Tree Plantings in Urban
Areas
July 12, 2024
Page 6 of 7

ADDITIONAL SERVICES:

Any services requested outside of the scope of work above will be charged hourly according to the rate schedule attached. Prosser|PrimeAE will obtain proposals for other subconsultant services as necessary to complete the proposed work, then submit to you for review & approval. We will assist with coordinating the work of all subconsultants by providing them with site information and data, as and when requested.

Our scope of work for this project does not include the following:



- Civil Engineering design plans, details and permitting, excluding MOT design plans noted above
- FDOT Design Reports, Engineering Design Exception or Design Variance
- Structural, Utility and Electrical Engineering
- Environmental assessments, Contaminated Soil Testing or Permitting
- Utility or transportation improvements, stormwater, modeling, or design
- Presentation color renderings
- Maintenance of Traffic (MOT) expenses needed for SUE work, exceeding limits noted in subconsultant proposal

OUT-OF-POCKET EXPENSES:

All job-related travel, reprographic, printing and plotting costs and supplies, mail and courier delivery services will be billed per the amounts in the executed continuous services contract.

It is our pleasure to provide this professional services proposal to you. If you wish to authorize us to proceed, we ask that you sign and return one copy of the signed proposal to our office. If you have any questions regarding our proposal, we remain available to discuss it with you at your convenience.

Sincerely,

<p>Prosser PrimeAE</p>  <p>Shawn Bliss, RLA, LEED AP Principal</p>	 <p>Paul S. Moss, Jr., RLA Senior Landscape Architect</p>
--	---

Mr. Dave McDaniel
Professional Design Services for Design Requirements for Tree Plantings in Urban
Areas
July 12, 2024
Page 7 of 7

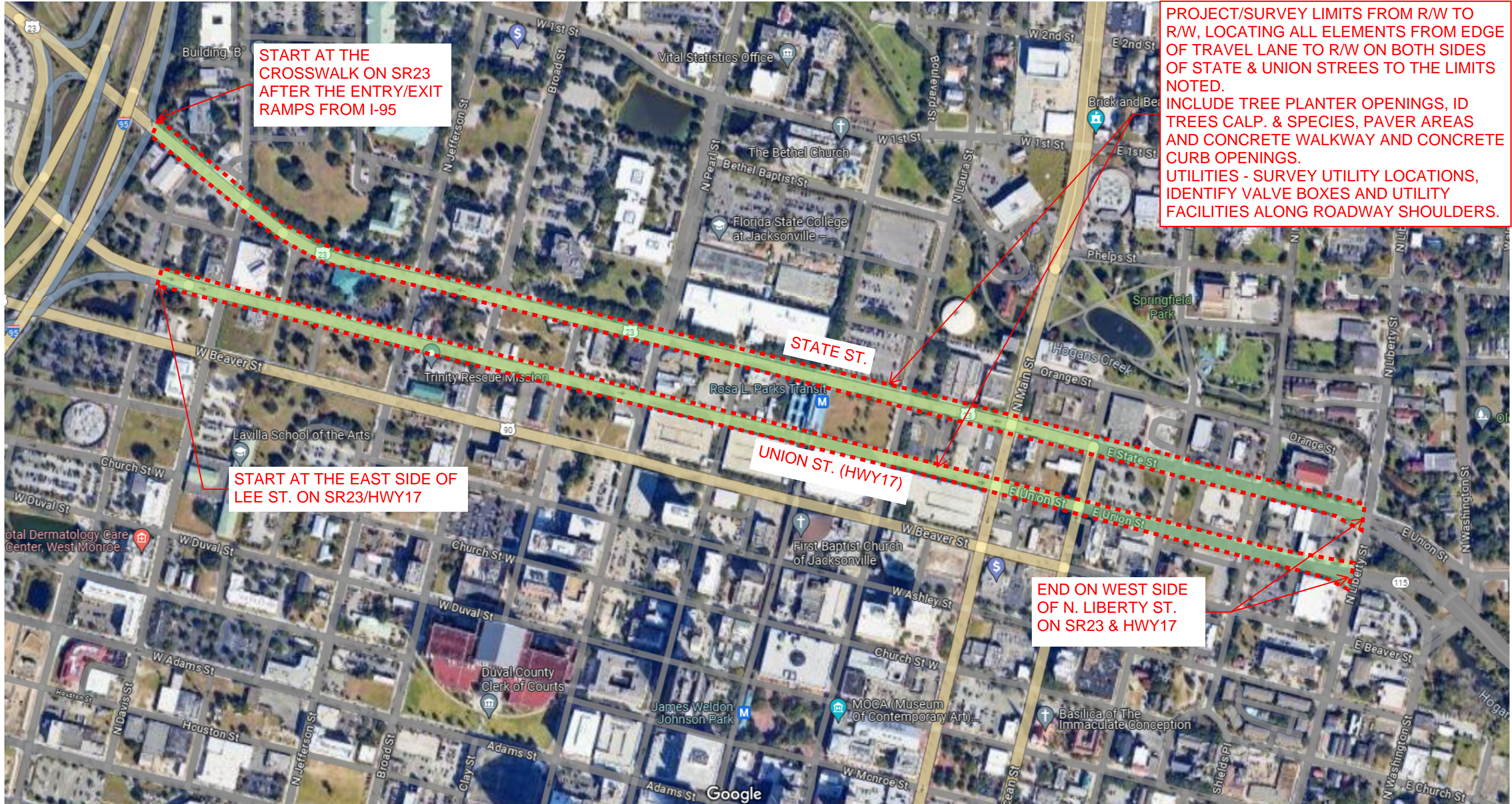
Accepted by:

Signature

Typed Name & Title

Date

Note: All requirements of the executed contract between the City of Jacksonville and Prosser|PrimeAE, d/b/a Prosser, Inc. (P-32-20) shall be applicable to the above referenced scope of services.



START AT THE CROSSWALK ON SR23 AFTER THE ENTRY/EXIT RAMP FROM I-95

START AT THE EAST SIDE OF LEE ST. ON SR23/HWY17

STATE ST.

UNION ST. (HWY17)

END ON WEST SIDE OF N. LIBERTY ST. ON SR23 & HWY17

**PROJECT/SURVEY LIMITS FROM R/W TO R/W, LOCATING ALL ELEMENTS FROM EDGE OF TRAVEL LANE TO R/W ON BOTH SIDES OF STATE & UNION STREETS TO THE LIMITS NOTED.
 INCLUDE TREE PLANTER OPENINGS, ID TREES CALP. & SPECIES, PAVER AREAS AND CONCRETE WALKWAY AND CONCRETE CURB OPENINGS.
 UTILITIES - SURVEY UTILITY LOCATIONS, IDENTIFY VALVE BOXES AND UTILITY FACILITIES ALONG ROADWAY SHOULDERS.**

COJ PUBLIC WORKS - MOWING & LANDSCAPE MAINTENANCE

DOWNTOWN DESIGN REQUIREMENTS FOR TREE PLANTINGS IN URBAN AREAS - PROJECT LIMITS

7/1/2024

CONTRACT FEE SUMMARY FOR ENGINEERING DIVISION
CITY OF JACKSONVILLE, FLORIDA

PART ONE - GENERAL

1. PROJECT Tree Plantings in Urban Areas to include Union St. and State St.	2. PROPOSAL NUMBER P-32-20
3. CONSULTANT Prosser PrimeAE	4. DATE OF PROPOSAL 7/15/2024

PART TWO - LABOR RELATED COSTS

5. DIRECT LABOR	HOURLY RATE	ESTIMATED HOURS	ESTIMATED COST	TOTAL COST
Principal	\$ 83.27	75	\$ 6,245.25	
Project Manager (Reg. Prof.)	\$ 81.73	180	\$ 14,711.40	
Senior Engineer (Reg.)	\$ 60.25	208	\$ 12,532.00	
Senior Landscape Architect	\$ 58.50	328	\$ 19,188.00	
Design Landscape Architect (Reg.)	\$ 49.70	352	\$ 17,494.40	
Designer	\$ 39.00	222	\$ 8,658.00	
CADD Operator / Drafter	\$ 29.95	150	\$ 4,492.50	
Clerical	\$ 30.29	8	\$ 242.32	
TOTAL DIRECT LABOR				\$ 83,563.87
6. OVERHEAD (COMBINE FRINGE BENEFIT AND ADMINISTRATIVE) OVERHEAD RATE - 156.57% X TOTAL DIRECT LABOR				\$ 130,835.95
7. SUBTOTAL - LABOR + OVERHEAD (ITEMS 5 & 6)				\$ 214,399.82
8. PROFIT - LABOR RELATED COSTS (ITEM 7) X 10%				\$ 21,439.98

PART THREE - OTHER COSTS

9. MISCELLANEOUS DIRECT COSTS				
24" x 36" Black/White plans (.15/sf x 6 = \$0.90ea)		\$225.00		
11 X 17 Copies Black/White Copy		\$290.00		
11 X 17 Copies Full Color Copy		\$379.50		
8.5" x 11" Copies Black/White Copy		\$145.00		
8.5" x 11" Copies Black/White Copy		\$317.50		
Travel - Mileage		\$83.75		
Courier - Same Day		\$0.00		\$1,440.75
10. SUBCONTRACTS - LUMP SUM				
Survey - Smith Engineering				\$ 423,325.16
Geotechnical Engineering - CSI Geo				\$ 18,564.17
SUB-CONTRACT SUBTOTAL				\$ 441,889.33
TOTAL LUMP SUM AMOUNT (ITEMS 5,6,8,9 & 10)				\$ 679,169.88
11. REIMBURSABLE COSTS (LIMITING AMOUNT)				
Post Design Services (Initial Budget)				\$ 28,017.18
OTHER (SPECIFY)				
Irrigation Design Plans & Details (Optional)				\$ 27,500.00
SUBTOTAL REIMBURSABLE				\$ 55,517.18

PART FOUR - SUMMARY

TOTAL AMOUNT OF CONTRACT (LUMP SUM PLUS REIMBURSABLE) ITEMS 5,6,8,9,10,&11	\$ 734,687.06
---	----------------------

Prosser

DATE: 15-Jul-24
 CLIENT: City of Jacksonville
 PROJECT: Tree Plantings in Urban Areas to include Union St. and State St.

	Principal HRS	Project Manager HRS	Senior Engineer HRS	Senior Land. Arch. HRS	Design Land. Arch. HRS	Designer HRS	CADD Operator / Drafter HRS	Clerical HRS	TOTAL HRS
Task 1 Urban Tree Planting Requirements									
Develop urban tree planting report	5	10	0	40	0	0	0	0	55
Task 1 Subtotal Hours	5	10	0	40	0	0	0	0	55
Task 2 Survey, Base File Preparation & Tree Planting Preliminary Plans									
Develop Preliminary Tree Planting Plans 10th scale (+/-25 sheets)	12	24	16	32	40	30	30	0	184
Develop Preliminary Hardscape Construction Details (+/-5 sheets)	0	0	0	16	24	0	0	0	40
Opinion of Cost	2	4	8	8	12	16	0	0	50
Task 2 Subtotal Hours	14	28	24	56	76	46	30	0	274
Task 3 Jacksonville Tree Commission, DDRB, FDOT and COJ Permitting									
Tree Commission Mtg preparation & attendance	0	4	0	4	0	0	0	0	8
DDRB Application, Presentation Preparation & Attendance	0	4	0	12	24	0	0	0	40
Develop Permit Landscape Plans & Details(+/-30 sheets)	0	16	0	60	80	60	60	0	276
Develop MOT Plans & Details(+/-30 sheets)	8	0	32	0	0	30	30	0	100
FDOT Application & Permit Plans Submittal / Coordination	4	8	32	16	24	0	0	0	84
COJ 10-Set Application & Permit Plans Submittal / Coordination	4	8	12	16	0	24	0	0	64
Update Opinion of Cost	2	2	4	4	8	16	0	0	36
Perform QA/QC review and address comments at each submittal	8	8	8	12	16	0	0	0	52
Task 3 Subtotal Hours	26	50	88	124	152	130	90	0	660
Task 4 Construction / Bid Documents									
Finalize Demolition Plans & Notes (+/-26 sheets)	4	8	16	24	40	0	0	0	92
Finalize Landscape Plans & Details(+/-35 sheets)	0	16	0	40	60	0	0	0	116
Finalize MOT Plans & Details(+/-30 sheets)	8	0	32	0	0	30	30	0	100
Update Opinion of Cost	2	2	4	4	8	16	0	0	36
Perform QA/QC Review at each Submittal	8	8	8	12	16	0	0	0	52
Task 4 Subtotal Hours	22	34	60	80	124	46	30	0	396
Task 5 City Technical Specifications									
Develop project specific technical specifications	0	8	16	8	0	0	0	8	40
Task 5 Subtotal Hours	0	8	16	8	0	0	0	8	40
Task 6 Meetings and Project Coordination									
Provide project coordination and meetings	8	50	20	20	0	0	0	0	98
Task 6 Subtotal Hours	8	50	20	20	0	0	0	0	98
Sub-Total Hours	75	180	208	328	352	222	150	8	1523
Hourly Rate (Loaded)	\$235.01	\$230.66	\$170.04	\$165.10	\$140.27	\$110.07	\$84.53	\$85.49	
Tasks #1 - #5 Total Labor Dollars	\$17,625.78	\$41,519.54	\$35,368.69	\$54,153.72	\$49,373.92	\$24,435.21	\$12,679.05	\$683.89	\$235,839.80
Task 7 Limited Post Design Services (Time & Materials - Limiting Amount)									
Assist City with various Bid Related Requirements	4	8	4	16	0	0	0	0	32
Review & respond to request for information	4	8	10	10	0	0	0	0	32
Limited Field Reviews and Inspections	8	16	60	0	0	0	0	0	84
Task 7 Subtotal Hours	16	32	74	26	0	0	0	0	148
Hourly Rate (Loaded)	\$235.01	\$230.66	\$170.04	\$165.10	\$140.27	\$110.07	\$84.53	\$85.49	
Task #7 - Total Labor Dollars	\$3,760.17	\$7,381.25	\$12,583.09	\$4,292.67	\$0.00	\$0.00	\$0.00	\$0.00	\$28,017.18
Task 8 Irrigation Plans (Optional)									\$27,500.00
f. Other Costs	Unit	\$/Unit	\$/Unit	Quantity	Cost				
24" x 36" Black/White plans (.15/sf x 6 = \$0.90ea)	ea.	\$0.90	\$0.90	250	\$225.00				
11 X 17 Copies Black/White Copy	ea.	\$0.58	\$0.58	500	\$290.00				
11 X 17 Copies Full Color Copy	ea.	\$2.53	\$2.53	150	\$379.50				
8.5" x 11" Copies Black/White Copy	ea.	\$0.29	\$0.29	500	\$145.00				
8.5" x 11" Copies Full Color Copy	ea.	\$1.27	\$1.27	250	\$317.50				
Travel - Mileage	mi.	\$0.67	\$0.67	125	\$83.75				
Courier - Same Day	ea.	\$27.60	\$27.60	0	\$0.00				
					\$1,440.75				
					Total Prosser Amount				\$292,797.74



July 10, 2024

Paul S Moss, Jr. Sr. Landscape Architect
Prosser
13901 Sutton Park Drive South, Suite 200
Jacksonville, Florida 32224

Re: COJ Tree Plantings Urban Areas State Street from Liberty Street. to I-95 Ramp, Topographic, Route, and SUE Surveying Proposal

Dear Paul:

Pursuant to your request and on behalf of the firm, we are pleased to submit our proposal for our services on the above referenced project. We are confident that our survey product will be an asset to your design activities. Based on our telephone conversation, a review of our records and a personal walk over of the site, we are pleased to offer the following scope of work and fee proposal for your review and approval:

SCOPE OF WORK:

TASK 1. Prepare a Topographic and Route Survey (lidar will utilized for a portion) of the proposed design route along the public rights-of-way (see attachment A) for a project centerline length of approximately 6400 feet, plus 25 feet along the 34 side intersection streets, for a total project survey length of approximately 7250 linear feet. Width of the survey effort will be from Right of Way to Right of Way, plus an additional 2-3 feet including the face of buildings. Additionally building overhangs, aerial encumbrances at the Skyway station on State St. Our survey effort will include Topographic, Route, Tree, SUE R/W monumentation and tree survey of all trees 4 inches and larger. All hardscape including driveways, sidewalks, hedges, signs, mailboxes, and landscape planters will be located. Sanitary and Storm drainage structures along with sizes and type. All utilities including electric, gas, phone, water, fire hydrants, irrigation, fiber optic, junction boxes and poles. All above ground visible evidence of utilities will be located. The route survey shall be utilized for the purposes of a civil engineering design for the proposed Urban Tree Planting. DTM will be produced from R/W to R/W including the face of buildings, per the specifications for length of project. Roadway Sections at 100 foot intervals on Right of Way to Right of Way. Smith Surveying Group will establish a limited right of way survey to retrace and reestablish the existing right of way lines and any parcel lines will be mapped per record plats and deed when available. No baselines, or replacement of missing property corners will be established for this project. See attached survey/sue estimates. Additional assistance will be required from JEA Water/Wastewater and COJ Streets and Drainage for access into the Storm and Sanitary system in all of the required intersections and streets.

TASK 2. Provide SUE efforts to meet ASCE 38-02 Quality Level A and Level B. 20 Test holes will be included (see attached proposal from McKim & Creed).

Deliverables will be a Topographic and Route Survey, AutoCad Civil 3D 2018 format. Final signed and sealed survey maps will be in pdf format. Horizontal datum shall be referenced to State Plane Coordinates (NAD 83/2011) for the State of Florida and vertical datum shall be referenced to NAVD 1988 from a published governmental Bench Mark.

Tree identifications performed in conjunction with a request for tree locations will be identified as to species to the best of our knowledge and belief; however, Smith Surveying Group, LLC will assume no liability, expressed or implied, for the correctness of said species identification. Tree locations will be provided within the existing R/W for all trees 4" DBH and larger.

We anticipate delivery of the preliminary product within **150-180** days from receipt of written Notice To Proceed, weather and site conditions permitting. Final deliverables shall be two (2) signed and sealed blue-line prints, and an electronic drawing file, if requested. Additional sealed copies may be furnished at a nominal charge, if requested. We are ready to begin our services immediately upon receipt of Notification to Proceed. Our fees for the above services will be as noted on the attached man hour estimate; estimated fees will not be exceeded without prior written authorization from the CLIENT. We shall invoice you on a monthly progressive billing cycle for the to-date percent complete and we will expect full payment for each monthly invoice within 10 days from the date of the respective invoice.

This scope of work is for a "one time" performance of the services as outlined herein; any survey points that are destroyed or lost due to construction activities, vandalism, acts of God, etc. that require replacement shall be replaced at CLIENT's expense and upon your authorization. Should the scope of work be changed by CLIENT either in writing or verbally, CLIENT agrees to pay Smith Surveying Group, LLC for any additional work involved in said changes at our Standard Billing Rates, unless a supplemental contract is agreed to and executed by both parties prior to the commencement of the changes. In the event all or a portion of the work prepared or partially prepared by our firm be suspended, abandoned, or terminated by CLIENT or others, CLIENT shall pay Smith Surveying Group, LLC for all fees, charges and services provided for the project, not exceeding any contractual limits specified herein.

Smith Surveying Group, LLC will not be liable for damages resulting from the actions or inactions of any regulatory or governmental agencies, and shall only act as an advisor on behalf of CLIENT in all governmental relations. All original papers, documents and all work product and copies thereof, produced as a result of or incidental to this contract shall remain the property of Smith Surveying Group, LLC. CLIENT agrees to grant us the right to assign without notice this agreement or any part thereof as we shall deem necessary for the completion of this project. We agree not to unreasonably damage the subject property, but CLIENT agrees to grant Smith Surveying Group, LLC the right to cut bushes and trees and to remove other objects interfering with our work as necessary in the performance of our work.

CLIENT further agrees that the standard of care for Smith Surveying Group, LLC's performance under this contract shall be the ordinary and reasonable duty and care associated with this type of work in the community of Jacksonville, Florida and that the proper venue for litigation of any cause of action hereto shall be that court of jurisdiction in Jacksonville, Florida. Should litigation be necessary to enforce any term of this agreement or any cause of action related thereto, then all litigation and collection expenses,

witness fees, court costs and reasonable attorney's fees for Smith Surveying Group, LLC shall be paid by the addressee. It is further understood and agreed that this contract is between Smith Surveying Group, LLC and the addressee only, and payment to Smith Surveying Group, LLC shall not be contingent on payment(s) from a third party.

This agreement supersedes any prior agreement, either expressed or implied, between the parties and that the terms and conditions stated herein constitute the full and complete agreement between the parties and no change or amendment thereof shall be effective except as agreed to in writing by both parties. If the above conditions are acceptable to CLIENT, please indicate your acknowledgment and agreement by executing this proposal in the space provided below.

Once again, we appreciate this opportunity to submit this proposal to you and we look forward to hearing from you in the near future. If you have any questions, please do not hesitate to call me personally.

Smith Surveying Group, LLC



Tom Smith, PSM
President

Accepted By: _____

Printed Name: _____

Date: _____

State Street Topographic, Route, Tree and SUE Proposal

SURVEY ESTIMATE

Task 1

Field Crew:	530 hours @ \$180.02hr.	\$ 95,410.60
CADD Technician:	280 hours @ \$130.00hr.	\$ 36,400.00
Principal	4 hours @\$ 180.02hr.	\$ 720.08
PSM:	20 hours @ \$ 175.01hr.	\$ 3,500.20
MOT Flagging Workzone		\$ 10,000.00
SUE estimate		\$ 59,900.00
SSG admin. of SUE		\$ 10,782.00
Total Estimated Fee		\$ 216,712.68

18.76 FT.



JULY 9, 2024

Tom Smith, P.S.M.
President
Smith Surveying Group
9770 Baymeadows Rd., Suite 121
Jacksonville, FL 32256

RE: SUE SERVICES FOR CITY OF JACKSONVILLE'S TREE PLANTING IN URBAN AREAS – STATE STREET, JACKSONVILLE, FLORIDA

TOM,

McKim & Creed is pleased to submit this proposal for subsurface utility designation Quality Level "B" (QLB) and locating Quality Level "A" (QLA) services for the above referenced project.

OVERVIEW

Locating underground utilities is requested for the above referenced route in Jacksonville, Florida. We will provide ASCE 38.02 Quality level "B" SUE investigation to designate utilities, and Quality Level "A" to visually verify utilities within the project limits (see Exhibit A).

SCOPE

1. SUE Route includes the following:
 - a. From edge of travel way to back of ROW along State Street, between I-95 Exit Ramp and Liberty Street. Both sides of the street.
2. We will submit an 811 dig ticket in order to proceed with our scope.
3. We will provide QLB designating to locate utilities along the project route.
4. We will provide QLA locating to visually verify underground utilities. This proposal includes up to 20 test holes
5. We will submit permits to the City of Jacksonville and FDOT to perform work within their Right of Way, if necessary.
6. We will submit photos, an overall sketch of utility locations and test hole sheets in a SUE report upon completion of fieldwork.
7. Lane closures may be necessary for test holes, depending on location. A certified MOT company will be contracted to set up signage, when necessary, and will be billed to the Client at cost.

OUR PROCESS

- The Client will provide utility records or other supporting documents to us, if available.
- We will investigate the requested areas using electromagnetic (EM) and ground penetrating radar (GPR) equipment to locate utilities and will mark our findings with paint and flags.
- We will coordinate with Client on dig locations. We assume test hole locations will be accessible.
- We will create detailed field notes of our findings including site sketch and photos.

OUR FEE

Our **Not-to-Exceed** estimate for this project **\$59,900.00**.

Item	Description	Est Quantity	Units	Unit Price	Total Per Item
1	Vacuum Excavation Crew (20 test holes)	50	Hrs	\$ 290.00	\$ 14,500.00
2	Designating Crew	200	Hrs	\$ 180.00	\$ 36,000.00
3	Project Management Includes Reporting, Admin Costs, Permitting Fees	1	Lump Sum	\$ 4,000.00	\$ 4,000.00
4	MOT (billed out at cost)	1	Lump Sum	\$ 5,400.00	\$ 5,400.00
Total					\$ 59,900.00

SCHEDULE

We anticipate the utility designation taking one to two months to complete once notice to proceed has been given. Final field notes will be delivered promptly upon completion of fieldwork.

DELIVERABLES

The deliverables for this project fieldnotes, photos, site sketch depicting field observations.

GENERAL CONDITIONS

The following attachments will be deemed as part of this proposal and agreement:

- Exhibit "A" – Site Map
- General Conditions

If acceptable, please return one signed copy of this document for our files. Our receipt of the executed copy of this proposal will serve as our Notice to Proceed. This proposal is valid for 30 days from the date of the proposal. If the proposal is not accepted within 30 days, we reserve the right to revise or withdraw the proposal entirely at our discretion.

We appreciate the opportunity to provide this proposal to you and look forward to working on the project with you.

Sincerely,

Jonathan Welker
Senior SUE Project Manager
McKim & Creed, Inc.

I hereby authorize McKim & Creed, Inc. to proceed with the work described above.

CLIENT

BY: _____ DATE: _____

TITLE: _____



July 10, 2024

Paul S Moss, Jr. Sr. Landscape Architect
Prosser
13901 Sutton Park Drive South, Suite 200
Jacksonville, Florida 32224

Re: COJ Tree Plantings Urban Areas Union Street from Liberty St. to I-95 Ramp, Topographic, Route, Tree, and SUE Surveying Proposal

Dear Paul:

Pursuant to your request and on behalf of the firm, we are pleased to submit our proposal for our services on the above referenced project. We are confident that our survey product will be an asset to your design activities. Based on our telephone conversation, a review of our records and a personal walk over of the site, we are pleased to offer the following scope of work and fee proposal for your review and approval:

SCOPE OF WORK:

TASK 1. Prepare a Topographic and Route Survey (lidar will utilized for a portion) of the proposed design route along the public rights-of-way (see attachment A) for a project centerline length of approximately 5700 feet, plus 25 feet along the 34 side intersection streets, for a total project survey length of approximately 6560 linear feet. Width of the survey effort will be from Right of Way to Right of Way, plus an additional 2-3 feet including the face of buildings. Additionally building overhangs and aerial encumbrances including skyway tram. Our survey effort will include Topographic, Route, Trees, and SUE R/W monumentation and tree survey of all trees 4 inches and larger. All hardscape including driveways, sidewalks, hedges, signs, mailboxes, and landscape planters will be located. Sanitary and Storm drainage structures along with sizes and type. All utilities including electric, gas, phone, water, fire hydrants, irrigation, fiber optic, junction boxes and poles. All above ground visible evidence of utilities will be located. The route survey shall be utilized for the purposes of a civil engineering design for the proposed Complete Streets Project. DTM will be produced from R/W to R/W including the face of buildings, per the specifications for length of project. Roadway Sections at 100 foot intervals on Right of Way to Right of Way. Smith Surveying Group will establish a limited right of way survey to retrace and reestablish the existing right of way lines and any parcel lines will be mapped per record plats and deed when available. No baselines, or replacement of missing property corners will be established for this project. See attached survey/sue estimates. Additional assistance will be required from JEA Water/Wastewater and COJ Streets and Drainage for access into the Storm and Sanitary system in all of the required intersections and streets.

TASK 2. Provide SUE efforts to meet ASCE 38-02 Quality Level A and Level B. 20 Test holes will be included (see attached proposal from McKim & Creed).

Deliverables will be a Topographic and Route Survey, AutoCad Civil 3D 2018 format. Final signed and sealed survey maps will be in pdf format. Horizontal datum shall be referenced to State Plane Coordinates (NAD 83/2011) for the State of Florida and vertical datum shall be referenced to NAVD 1988 from a published governmental Bench Mark.

Tree identifications performed in conjunction with a request for tree locations will be identified as to species to the best of our knowledge and belief; however, Smith Surveying Group, LLC will assume no liability, expressed or implied, for the correctness of said species identification. Tree locations will be provided within the existing R/W for all trees 4" DBH and larger.

We anticipate delivery of the preliminary product within 150-180 days from receipt of written Notice To Proceed, weather and site conditions permitting. Final deliverables shall be two (2) signed and sealed blue-line prints, and an electronic drawing file, if requested. Additional sealed copies may be furnished at a nominal charge, if requested. We are ready to begin our services immediately upon receipt of Notification to Proceed. Our fees for the above services will be as noted on the attached man hour estimate; estimated fees will not be exceeded without prior written authorization from the CLIENT. We shall invoice you on a monthly progressive billing cycle for the to-date percent complete and we will expect full payment for each monthly invoice within 10 days from the date of the respective invoice.

This scope of work is for a "one time" performance of the services as outlined herein; any survey points that are destroyed or lost due to construction activities, vandalism, acts of God, etc. that require replacement shall be replaced at CLIENT's expense and upon your authorization. Should the scope of work be changed by CLIENT either in writing or verbally, CLIENT agrees to pay Smith Surveying Group, LLC for any additional work involved in said changes at our Standard Billing Rates, unless a supplemental contract is agreed to and executed by both parties prior to the commencement of the changes. In the event all or a portion of the work prepared or partially prepared by our firm be suspended, abandoned, or terminated by CLIENT or others, CLIENT shall pay Smith Surveying Group, LLC for all fees, charges and services provided for the project, not exceeding any contractual limits specified herein.

Smith Surveying Group, LLC will not be liable for damages resulting from the actions or inactions of any regulatory or governmental agencies, and shall only act as an advisor on behalf of CLIENT in all governmental relations. All original papers, documents and all work product and copies thereof, produced as a result of or incidental to this contract shall remain the property of Smith Surveying Group, LLC. CLIENT agrees to grant us the right to assign without notice this agreement or any part thereof as we shall deem necessary for the completion of this project. We agree not to unreasonably damage the subject property, but CLIENT agrees to grant Smith Surveying Group, LLC the right to cut bushes and trees and to remove other objects interfering with our work as necessary in the performance of our work.

CLIENT further agrees that the standard of care for Smith Surveying Group, LLC's performance under this contract shall be the ordinary and reasonable duty and care associated with this type of work in the community of Jacksonville, Florida and that the proper venue for litigation of any cause of action hereto shall be that court of jurisdiction in Jacksonville, Florida. Should litigation be necessary to enforce any term of this agreement or any cause of action related thereto, then all litigation and collection expenses,

witness fees, court costs and reasonable attorney's fees for Smith Surveying Group, LLC shall be paid by the addressee. It is further understood and agreed that this contract is between Smith Surveying Group, LLC and the addressee only, and payment to Smith Surveying Group, LLC shall not be contingent on payment(s) from a third party.

This agreement supersedes any prior agreement, either expressed or implied, between the parties and that the terms and conditions stated herein constitute the full and complete agreement between the parties and no change or amendment thereof shall be effective except as agreed to in writing by both parties. If the above conditions are acceptable to CLIENT, please indicate your acknowledgment and agreement by executing this proposal in the space provided below.

Once again, we appreciate this opportunity to submit this proposal to you and we look forward to hearing from you in the near future. If you have any questions, please do not hesitate to call me personally.

Smith Surveying Group, LLC



Tom Smith, PSM
President

Accepted By: _____
Printed Name: _____
Date: _____

Union Street Topographic, Route, Tree and SUE Proposal

SURVEY ESTIMATE

Task 1

Field Crew:	510 hours @ \$180.02hr.	\$ 91,810.20
CADD Technician:	230 hours @ \$130.00hr.	\$ 29,900.00
Principal	4 hours @ \$ 180.02hr.	\$ 720.08
PSM:	20 hours @ \$ 175.01hr.	\$ 3,500.20
MOT Flagging Workzone		\$ 10,000.00
SUE estimate		\$ 59,900.00
SSG admin. of SUE		\$ 10,782.00
Total Estimated Fee		\$ 206,612.48



JULY 9, 2024

Tom Smith, P.S.M.
President
Smith Surveying Group
9770 Baymeadows Rd., Suite 121
Jacksonville, FL 32256

RE: SUE SERVICES FOR CITY OF JACKSONVILLE'S TREE PLANTING IN URBAN AREAS – UNION STREET, JACKSONVILLE, FLORIDA

TOM,

McKim & Creed is pleased to submit this proposal for subsurface utility designation Quality Level "B" (QLB) and locating Quality Level "A" (QLA) services for the above referenced project.

OVERVIEW

Locating underground utilities is requested for the above referenced route in Jacksonville, Florida. We will provide ASCE 38.02 Quality level "B" SUE investigation to designate utilities, and Quality Level "A" to visually verify utilities within the project limits (see Exhibit A).

SCOPE

1. SUE Route includes the following:
 - a. From edge of travel way to back of ROW along Union Street, between Lee Street and Liberty Street. Both sides of the street.
2. We will submit an 811 dig ticket in order to proceed with our scope.
3. We will provide QLB designating to locate utilities along the project route.
4. We will provide QLA locating to visually verify underground utilities. This proposal includes up to 20 test holes
5. We will submit permits to the City of Jacksonville and FDOT to perform work within their Right of Way, if necessary.
6. We will submit photos, an overall sketch of utility locations and test hole sheets in a SUE report upon completion of fieldwork.
7. Lane closures may be necessary for test holes, depending on location. A certified MOT company will be contracted to set up signage, when necessary, and will be billed to the Client at cost.

OUR PROCESS

- The Client will provide utility records or other supporting documents to us, if available.
- We will investigate the requested areas using electromagnetic (EM) and ground penetrating radar (GPR) equipment to locate utilities and will mark our findings with paint and flags.
- We will coordinate with Client on dig locations. We assume test hole locations will be accessible.
- We will create detailed field notes of our findings including site sketch and photos.

OUR FEE

SUE SERVICES FOR COJ TREE PLANTING IN URBAN AREAS – UNION STREET, JACKSONVILLE, FLORIDA

7/9/2024

PAGE 2 OF 3

Our **Not-to-Exceed** estimate for this project **\$59,900.00**.

Item	Description	Est Quantity	Units	Unit Price	Total Per Item
1	Vacuum Excavation Crew (20 test holes)	50	Hrs	\$ 290.00	\$ 14,500.00
2	Designating Crew	200	Hrs	\$ 180.00	\$ 36,000.00
3	Project Management Includes Reporting, Admin Costs, Permitting Fees	1	Lump Sum	\$ 4,000.00	\$ 4,000.00
4	MOT (billed out at cost)	1	Lump Sum	\$ 5,400.00	\$ 5,400.00
Total					\$ 59,900.00

SCHEDULE

We anticipate the utility designation taking one to two months to complete once notice to proceed has been given. Final field notes will be delivered promptly upon completion of fieldwork.

DELIVERABLES

The deliverables for this project fieldnotes, photos, site sketch depicting field observations.

GENERAL CONDITIONS

The following attachments will be deemed as part of this proposal and agreement:

- Exhibit "A" – Site Map
- General Conditions

If acceptable, please return one signed copy of this document for our files. Our receipt of the executed copy of this proposal will serve as our Notice to Proceed. This proposal is valid for 30 days from the date of the proposal. If the proposal is not accepted within 30 days, we reserve the right to revise or withdraw the proposal entirely at our discretion.

We appreciate the opportunity to provide this proposal to you and look forward to working on the project with you.

Sincerely,

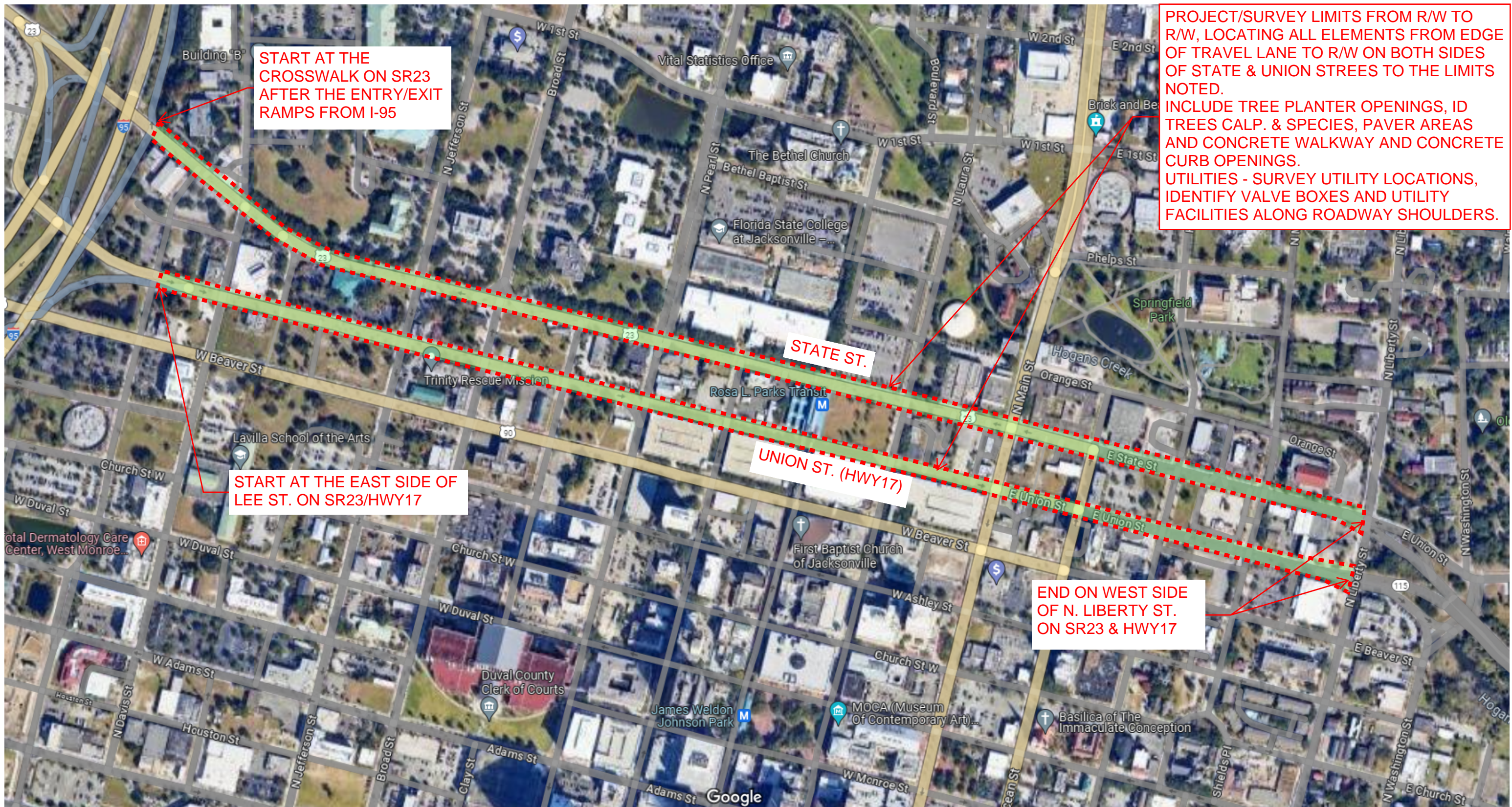
Jonathan Welker
Senior SUE Project Manager
McKim & Creed, Inc.

I hereby authorize McKim & Creed, Inc. to proceed with the work described above.

CLIENT

BY: _____ DATE: _____

TITLE: _____



START AT THE CROSSWALK ON SR23 AFTER THE ENTRY/EXIT RAMP FROM I-95

START AT THE EAST SIDE OF LEE ST. ON SR23/HWY17

PROJECT/SURVEY LIMITS FROM R/W TO R/W, LOCATING ALL ELEMENTS FROM EDGE OF TRAVEL LANE TO R/W ON BOTH SIDES OF STATE & UNION STREETS TO THE LIMITS NOTED.
INCLUDE TREE PLANTER OPENINGS, ID TREES CALP. & SPECIES, PAVER AREAS AND CONCRETE WALKWAY AND CONCRETE CURB OPENINGS.
UTILITIES - SURVEY UTILITY LOCATIONS, IDENTIFY VALVE BOXES AND UTILITY FACILITIES ALONG ROADWAY SHOULDERS.

STATE ST.

UNION ST. (HWY17)

END ON WEST SIDE OF N. LIBERTY ST. ON SR23 & HWY17

COJ PUBLIC WORKS - MOWING & LANDSCAPE MAINTENANCE

DOWNTOWN DESIGN REQUIREMENTS FOR TREE PLANTINGS IN URBAN AREAS - PROJECT LIMITS

7/1/2024



GEOTECHNICAL FEE ESTIMATE

2394 St. Johns Bluff Road, S Suite 200
 Jacksonville, Florida 32246
 tel (904) 641-1993

Geotechnical Exploration

**Tree Plantings in Urban Areas - Union St. and State St.
 Jacksonville, Florida**

Item Description	Unit	Number of Units		Cost / Unit		Estimated Cost
Field Investigation						
Mobilization	ea.	1	ea.	\$600.00	/ea.	\$600.00
50 Auger Borings with Static Cone Penetrometer Testing @ 5' ea.	ft.	250	ft.	\$21.50	/ft.	\$5,375.00
MOT (Sidewalk Signs)	hr.	5	hr.	\$295.00	/hr.	\$1,475.00
Double Ring Infiltration	ea.	8	ea.	\$640.00	/ea.	\$5,120.00
		Subtotal:				\$12,570.00
Laboratory Testing						
Organic Content	ea.	50	ea.	\$54.00	/ea.	\$2,700.00
		Subtotal:				\$2,700.00
Geotechnical Report						
Senior Geotechnical Engineer	hr.	1	hr.	\$190.38	/hr.	\$190.38
Engineer	hr.	6	hr.	\$92.13	/hr.	\$552.78
CADD/Computer Technician	hr.	14	hr.	\$82.36	/hr.	\$1,153.04
Geotechnical Technician	hr.	14	hr.	\$82.01	/hr.	\$1,148.14
Clerical	hr.	3	hr.	\$83.30	/hr.	\$249.90
		Subtotal:				\$3,294.24
TOTAL (Estimated):						\$18,564.24

CONTRACT FEE SUMMARY FOR ENGINEERING DIVISION
CITY OF JACKSONVILLE, FLORIDA

PART ONE - GENERAL

1. PROJECT Tree Plantings in Urban Areas to include Union St. and State St.	2. PROPOSAL NUMBER P-32-20
3. CONSULTANT CSIGeo	4. DATE OF PROPOSAL 7/15/2024

PART TWO - LABOR RELATED COSTS

5. DIRECT LABOR	HOURLY RATE	ESTIMATED HOURS	ESTIMATED COST	TOTAL COST
Senior Geotechnical Engineer	\$ 69.23	1	\$ 69.23	
Engineer	\$ 33.50	6	\$ 201.00	
CADD/Computer Technician	\$ 29.95	14	\$ 419.30	
Geotechnical Technician	\$ 29.82	14	\$ 417.48	
Clerical	\$ 30.29	3	\$ 90.87	
	\$ -	0	\$ -	
	\$ -	0	\$ -	
	\$ -	0	\$ -	
TOTAL DIRECT LABOR				\$ 1,197.88
6. OVERHEAD (COMBINE FRINGE BENEFIT AND ADMINISTRATIVE) OVERHEAD RATE - 150% X TOTAL DIRECT LABOR				\$ 1,796.82
7. SUBTOTAL - LABOR + OVERHEAD (ITEMS 5 & 6)				\$ 2,994.70
8. PROFIT - LABOR RELATED COSTS (ITEM 7) X 10%				\$ 299.47

PART THREE - OTHER COSTS

9. MISCELLANEOUS DIRECT COSTS				
24" x 36" Black/White plans (.15/sf x 6 = \$0.90ea)			\$0.00	
11 X 17 Copies Black/White Copy			\$0.00	
11 X 17 Copies Full Color Copy			\$0.00	
8.5" x 11" Copies Black/White Copy			\$0.00	
8.5" x 11" Copies Black/White Copy			\$0.00	
Travel - Mileage			\$0.00	
Courier - Same Day			\$0.00	\$0.00

10. SUBCONTRACTS - LUMP SUM	
SUB-CONTRACT SUBTOTAL	\$ -
TOTAL LUMP SUM AMOUNT (ITEMS 5,6,8,9 & 10)	\$ 3,294.17

11. REIMBURSABLE COSTS (LIMITING AMOUNT)	
OTHER (SPECIFY)	
SUBTOTAL REIMBURSABLE	\$ 15,270.00

PART FOUR - SUMMARY

TOTAL AMOUNT OF CONTRACT (LUMP SUM PLUS REIMBURSABLE) ITEMS 5,6,8,9,10,&11	\$ 18,564.17
--	---------------------



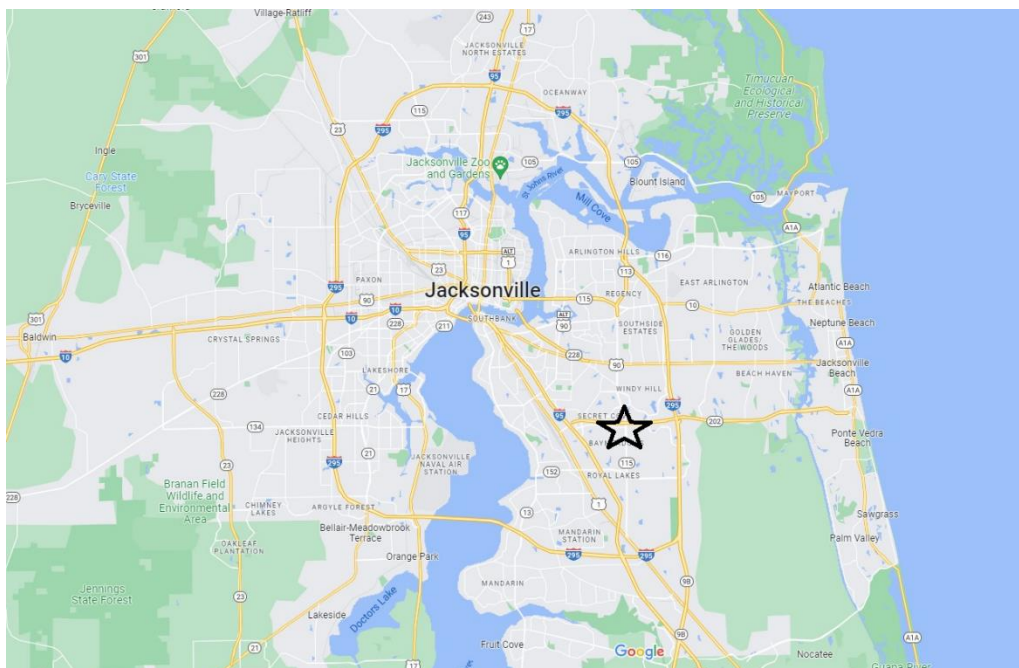
Gate Parkway Level 2

Scope of Work

Description:

A tree planting project has been requested for planting in the median and Right of Way of Gate Parkway between Belfort Road and Southside Blvd, and Gate Parkway between Burnt Mill Road and I-295. This project will take place in City Council District 4 and 11 and includes the planting of shade trees that will serve as an aesthetic improvement and a heat reduction purpose. In addition, these plantings will help to filter and slow down stormwater runoff before reaching the city's stormwater management infrastructure. All trees selected were shade trees to enhance the city's canopy. This project includes the planting of 49 total trees, with no tree removals necessary. To see a map of the planting plan, please see: <https://pg-cloud.com/JacksonvilleFL/?scenario=Gate-Parkway-Level-2>. All trees will be planted on public right of way areas within Duval County.

Approximate location of planting project within Duval County.



LEVEL 2 COMMUNITY ORGANIZATION TREE PLANTING PROGRAM

The form below provides individual citizens and organizations with the opportunity to suggest a location for a tree planting project within Duval County that proposes to use funds from the City of Jacksonville Tree Protection and Related Expenses Trust Fund. If a citizen or organization is interested in suggesting a planting location for the City to implement, then use this form.

Requirements to utilize this program:

1. The location of the proposed planting must be:
 - a. In Duval County; and
 - b. On public property, such as a road right-of-way; a local, state or national park; Duval County School Board property, etc.

Complete the following information below:

1. Name/title of project: Gate Parkway Level 2
2. Legal name of organization/citizen making suggestion:
Justin Gearhart
3. Organization or citizen mailing address:
COJ
4. Contact phone number: 904-255-4327
Contact e-mail: Jgearhart@Coj.net
5. Location/address of planting project:
Gate Parkway between Belfort and Southside and between Burnt Mill Road and I-295
6. Has project information been shared with the Council Member of the district? yes
7. Rationale for project (include information about the public benefit of the project):
Empty median that can use shade, aesthetic benefits to corridor and stormwater reduction.
8. Description of project:
Planting of 49 Live oaks along corridor in medians and ROW

If a citizen/organization is interested in proposing a project that they want to administer and implement, a more comprehensive application (Level 3) can be found at the following link: <http://www.coj.net/departments/public-works/tree-commission>.

****To Be Completed By City of Jacksonville/Public Works Staff Only****

Level 2 - Community Organization Tree Planting Program Staff Checklist

Total number of trees to be installed

49

Project Title:

Gate Parkway Level 2

Total number of trees to be removed

0

Project is to be planted on Public Land

Project is located in Duval County

Activity	Complete
1 The species of trees are appropriately located.	✓
2 The number and placement of trees is appropriate.	✓
3 Trees being planted are approved pursuant to the 'Tree Commission Approved Tree Planting List.'	✓
4 Shade Trees are preferred; if non-shade trees are proposed, the use is appropriated/acceptable.	✓
5 Less than 25% of the total species of trees being planted are palms.	0%
6 The planting will not interfere with utilities or sight line requirements.	✓
7 The project does not include incidental landscaping. If so, the applicant must justify the reason for its inclusion.	✓
8 Construction required? Yes <input type="checkbox"/> No <input checked="" type="checkbox"/> If yes, are costs reasonable?	✓
9 Irrigation installed? Yes <input type="checkbox"/> No <input checked="" type="checkbox"/> If yes, are costs reasonable?	✓
10 The cost of the species of trees selected do not outweigh the benefits of the trees.	✓
11 Low maintenance plants are utilized.	✓
12 Location of plant material and irrigation (if applicable) has minimum adverse impact over time on infrastructure such as walks and roads.	✓
13 Species of trees being planted are beneficial to the City's tree canopy.	✓
14 The project provides unique benefit to the neighborhood, Council District, or City.	✓
15 The project has been reviewed with and meets the needs of the requesting entity.	✓
16 The Councilmember has been notified of the project.	✓

COMMENTS:



July 10, 2024

Re: Gate Parkway Level 2

In accordance with bid #CP-0165-19, Liberty Landscape Supply proposes the following to include all labor, materials, equipment, taxes, delivery, installation, **2 Year Non-Irrigated** warranty, insurance, etc. for <https://pg-cloud.com/JacksonvilleFL/?scenario=Gate-Parkway-Level-2>:

ITEM	QUANTITY	PRICE/UNIT(NON-IRR)	TOTAL
Quercus virginiana, "Live Oak" 3" Cal, 12' Ht, 6' Spd, 36" B&B	49	\$ 2,295.54	\$ 112,481.46
MOT		\$ 11,200.00	\$ 11,200.00
	49 Trees		\$ 123,681.46

Respectfully

Mike Zaffaroni, Owner/President

Liberty Landscape Supply

13385 N Main St

Jacksonville, FL 32218



Copy of:

Symbology:

You're viewing the **Gate Parkway Level 2** trees.
Showing 6 of 49 sites.

SHOW ALL TREES **SHOW WORK ORDERS**

Toggle All

Live Oak (49)

Charts

Layers

- Council Districts
- Boundary
- City Allocated Parcels
- 7% Sample
- Sample Streets
- ROW
- Parcels
- Streets

display of: ▼

Symbology: ▼
Spread Radius

You're viewing the **Gate Parkway Level 2** trees.
Showing 12 of 49 sites.

SHOW ALL TREES SHOW WORK ORDERS

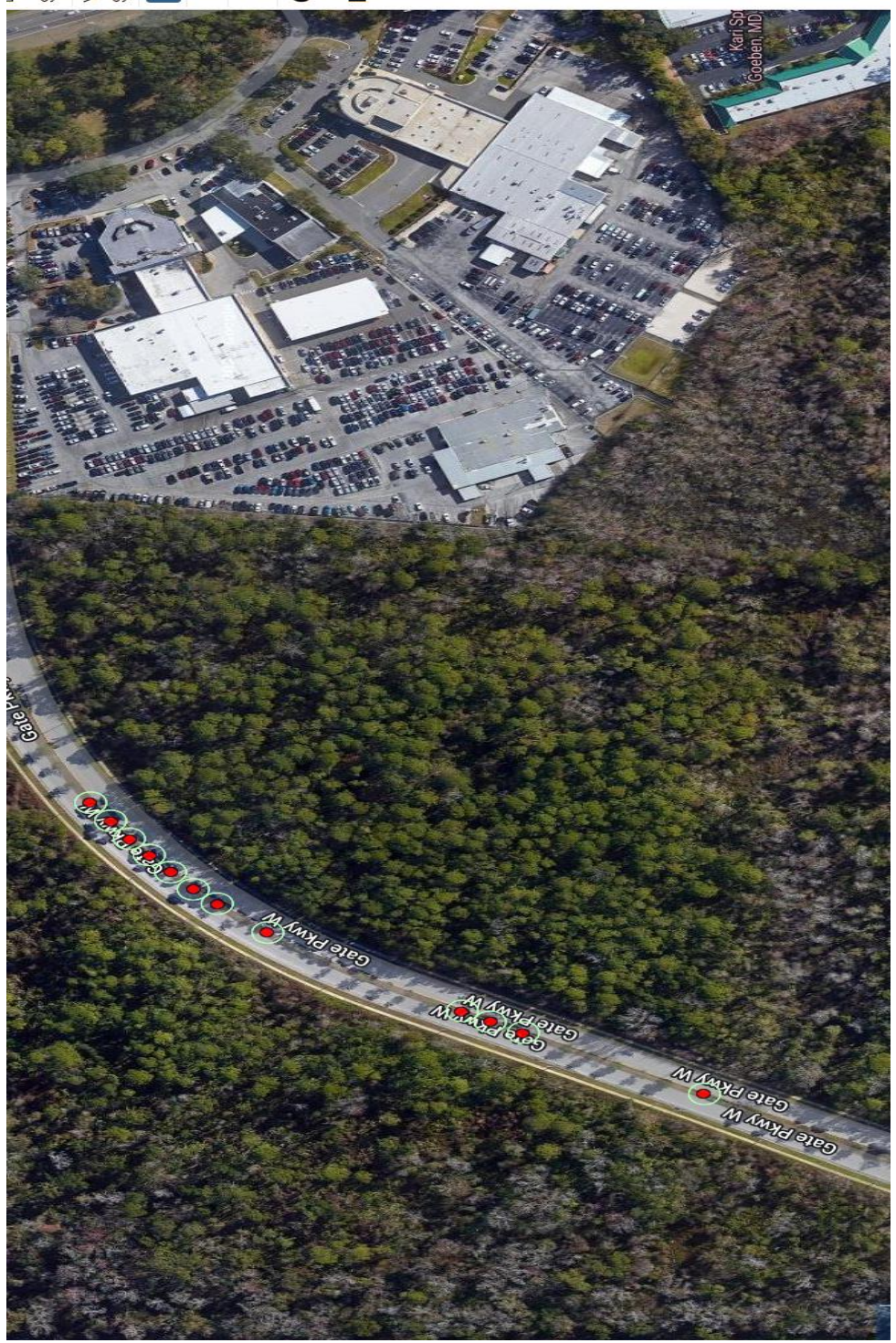
Toggle All ?

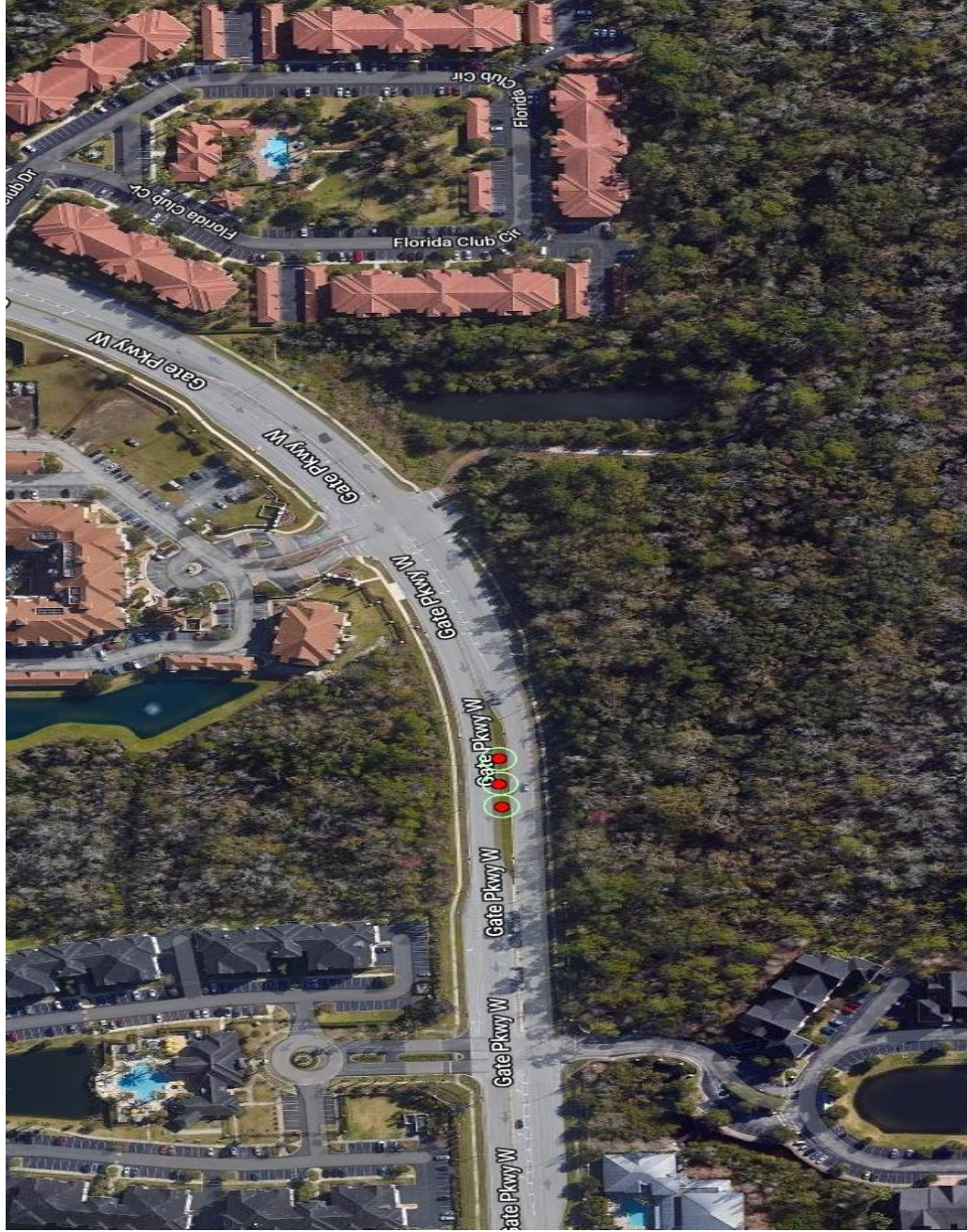
Live Oak (49)

Charts

Layers

- ROW
- Sample Streets
- 7% Sample
- City Allocated Parcels
- Boundary
- Council Districts
- Parcels
- Streets





Symbology: Spread Radius

You're viewing the Gate Parkway Level 2 trees.
Showing 3 of 49 sites.

SHOW ALL TREES SHOW WORK ORDERS

Toggle All

Live Oak (49)

Charts

Layers

- ROW
- Sample Streets
- 7% Sample
- City Allocated Parcels
- Boundary
- Council Districts
- Parcels
- Streets



Symbology: Spread Radius

You're viewing the Gate Parkway Level 2 tr
Showing 14 of 49 sites.

SHOW ALL TREES **SHOW WORK ORDERS**

Toggle All

Live Oak (49)

Charts

- Layers**
- ROW
 - Sample Streets
 - 7% Sample
 - City Allocated Parcels
 - Boundary
 - Council Districts
 - Parcels
 - Streets

display of:

objects

Symbology:

Spread Radius

You're viewing the Gate Parkway Level 2 tree

Showing 14 of 49 sites.

SHOW ALL TREES

SHOW WORK ORDERS

Toggle All

Live Oak (49)

Charts

Layers

- ROW
- Sample Streets
- 7% Sample
- City Allocated Parcels
- Boundary
- Council Districts
- Parcels
- Streets





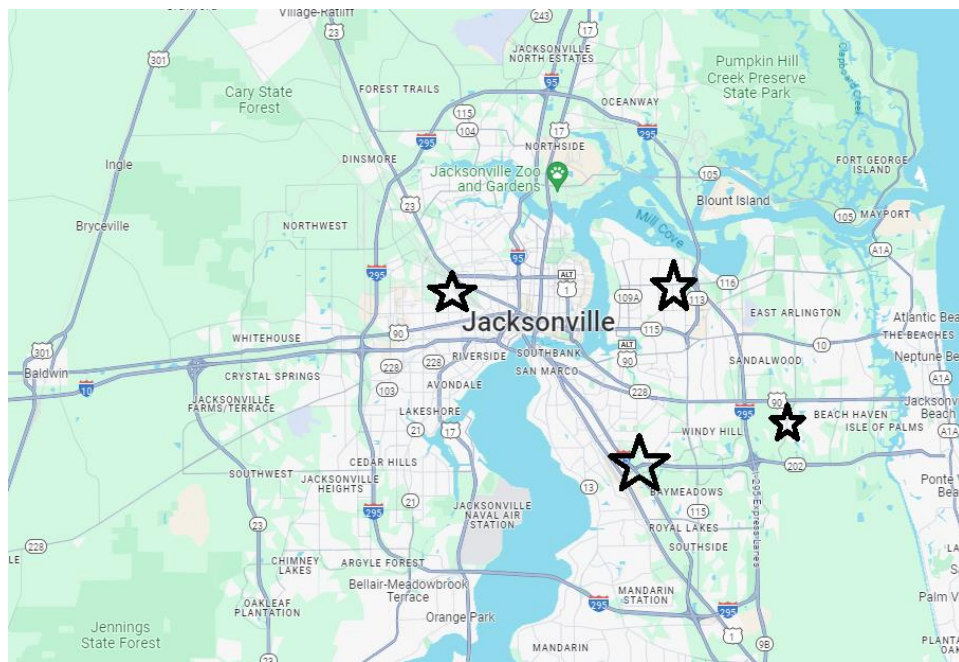
JTA Bus Stops Phase 1

Scope of Work

Description:

A tree planting project has been requested for planting for various bus stops throughout the city. This project will take place in City Council District 1,3,9,10,11 and includes the planting of a variety of shade trees that will serve as an aesthetic improvement and a heat reduction purpose. In addition, these plantings will help to filter and slow down stormwater runoff before reaching the city's stormwater management infrastructure. All trees selected were shade trees to enhance the city's canopy. This project includes the planting of 11 total trees, with no tree removal necessary. To see a map of the planting plan, please see: <https://pg-cloud.com/JacksonvilleFL/?scenario=JTA-Bus-Stop-Phase-1>. All trees will be planted on public right of way areas within Duval County.

Approximate location of planting project within Duval County.



LEVEL 2 COMMUNITY ORGANIZATION TREE PLANTING PROGRAM

The form below provides individual citizens and organizations with the opportunity to suggest a location for a tree planting project within Duval County that proposes to use funds from the City of Jacksonville Tree Protection and Related Expenses Trust Fund. If a citizen or organization is interested in suggesting a planting location for the City to implement, then use this form.

Requirements to utilize this program:

1. The location of the proposed planting must be:
 - a. In Duval County; and
 - b. On public property, such as a road right-of-way; a local, state or national park; Duval County School Board property, etc.

Complete the following information below:

1. Name/title of project:
2. Legal name of organization/citizen making suggestion:
3. Organization or citizen mailing address:
4. Contact phone number:
Contact e-mail:
5. Location/address of planting project:
6. Has project information been shared with the Council Member of the district?
7. Rationale for project (include information about the public benefit of the project):
8. Description of project:

If a citizen/organization is interested in proposing a project that they want to administer and implement, a more comprehensive application (Level 3) can be found at the following link: <http://www.coj.net/departments/public-works/tree-commission>.

To Be Completed By City of Jacksonville/Public Works Staff Only

Level 2 - Community Organization Tree Planting Program Staff Checklist

Total number of trees to be installed

11

Project Title:

JTA Bus Stop Planting Phase 1

Project is to be planted on Public Land

Total number of trees to be removed

0

Project is located in Duval County

Activity

Activity	Complete
1 The species of trees are appropriately located.	<input checked="" type="checkbox"/>
2 The number and placement of trees is appropriate.	<input checked="" type="checkbox"/>
3 Trees being planted are approved pursuant to the 'Tree Commission Approved Tree Planting List'	<input checked="" type="checkbox"/>
4 Shade Trees are preferred; if non-shade trees are proposed, the use is appropriated/acceptable.	<input checked="" type="checkbox"/>
5 Less than 25% of the total species of trees being planted are palms.	<input checked="" type="checkbox"/>
6 The planting will not interfere with utilities or sight line requirements.	<input checked="" type="checkbox"/>
7 The project does not include incidental landscaping. If so, the applicant must justify the reason for its inclusion.	<input checked="" type="checkbox"/>
8 Construction required? Yes <input checked="" type="checkbox"/> No <input checked="" type="checkbox"/> If yes, are costs reasonable?	<input checked="" type="checkbox"/>
9 Irrigation installed? Yes <input type="checkbox"/> No <input checked="" type="checkbox"/> If yes, are costs reasonable?	<input checked="" type="checkbox"/>
10 The cost of the species of trees selected do not outweigh the benefits of the trees.	<input checked="" type="checkbox"/>
11 Low maintenance plants are utilized.	<input checked="" type="checkbox"/>
12 Location of plant material and irrigation (if applicable) has minimum adverse impact over time on infrastructure such as walks and roads.	<input checked="" type="checkbox"/>
13 Species of trees being planted are beneficial to the City's tree canopy.	<input checked="" type="checkbox"/>
14 The project provides unique benefit to the neighborhood, Council District, or City.	<input checked="" type="checkbox"/>
15 The project has been reviewed with and meets the needs of the requesting entity.	<input checked="" type="checkbox"/>
16 The Councilmember has been notified of the project.	<input checked="" type="checkbox"/>

COMMENTS:



July 10, 2024

Re: JTA Bus Stops Phase 1

In accordance with bid #CP-0165-19, Liberty Landscape Supply proposes the following to include all labor, materials, equipment, taxes, delivery, installation, **2 Year Non-Irrigated** warranty, insurance, etc. for <https://pg-cloud.com/JacksonvilleFL/?scenario=JTA-Bus-Stop-Phase-1>:

ITEM	QUANTITY	PRICE/UNIT(NON-IRR)	TOTAL
Quercus virginiana, "Live Oak" 3" Cal, 12' Ht, 6' Spd, 36" B&B	7	\$ 2,295.54	\$ 16,068.78
MOT		\$ 4,200.00	\$ 4,200.00
	7 Trees		\$ 20,268.78

Respectfully

Mike Zaffaroni, Owner/President

Liberty Landscape Supply

13385 N Main St

Jacksonville, FL 32218



July 10, 2024

Re: JTA Bus Stops Phase 1

In accordance with bid #CP-0165-19, Liberty Landscape Supply proposes the following to include all labor, materials, equipment, taxes, delivery, installation, **2 Year Non-Irrigated** warranty, insurance, etc. for <https://pg-cloud.com/JacksonvilleFL/?scenario=JTA-Bus-Stop-Phase-1>:

ITEM	QUANTITY	PRICE/UNIT(NON-IRR)	TOTAL
Ulmus Alata, "Winged Elm" 3" Cal, 12' Ht, 6' Spd, 36" B&B	4	\$ 2,516.27	\$ 10,065.08
MOT		\$ 4,200.00	\$ 4,200.00
	4 Trees		\$ 14,265.08

Respectfully

Mike Zaffaroni, Owner/President

Liberty Landscape Supply

13385 N Main St

Jacksonville, FL 32218

Display by: Species

Symbology: None

You're viewing the JTA Bus Stop Tree Plantings Phase 1 trees.

Showing 4 of 11 sites.

SHOW ALL TREES SHOW WORK ORDERS

Toggle All ?

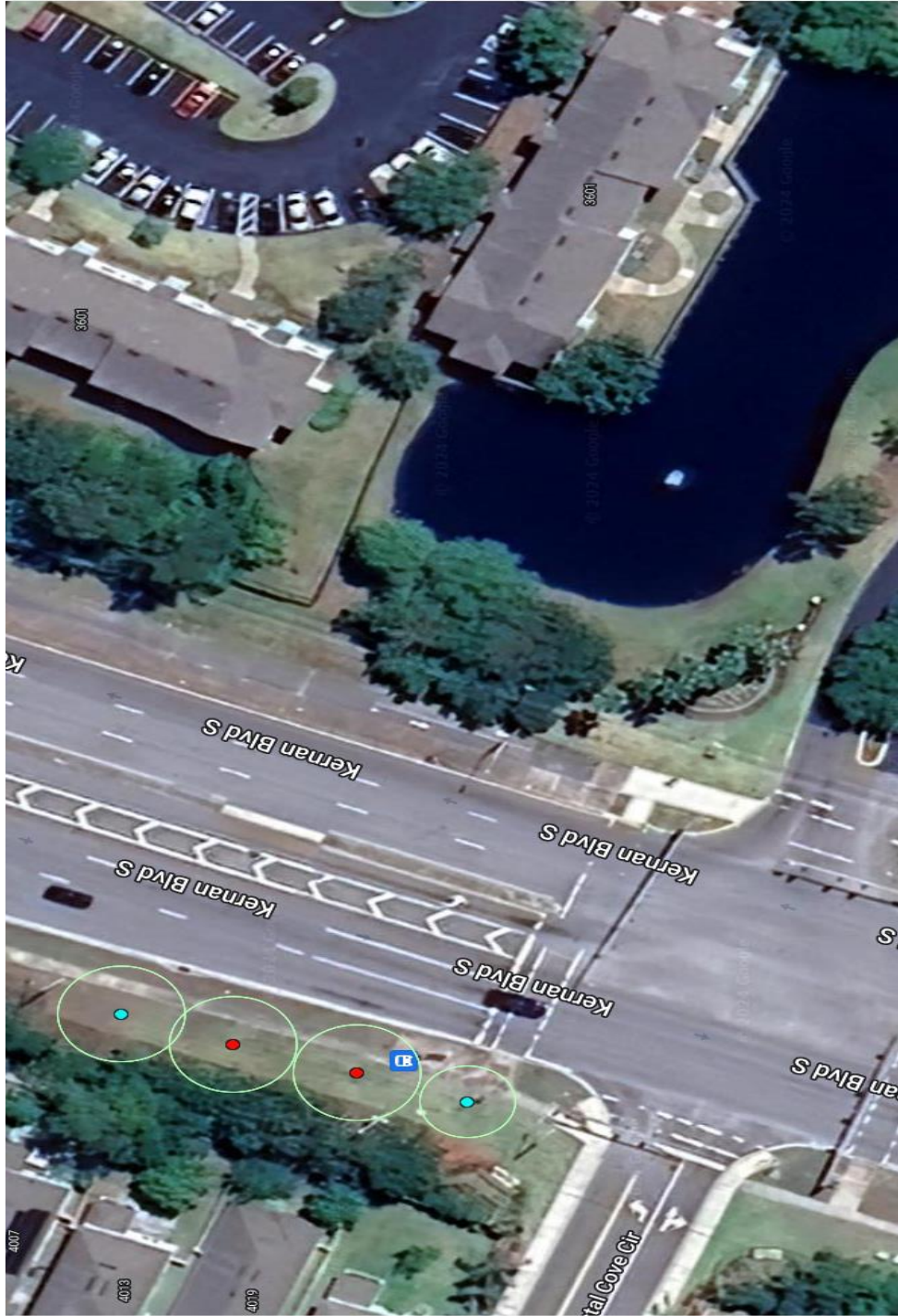
Live Oak (7)

Winged elm (4)

Charts

Layers

- Council Districts
- Boundary
- City Allocated Parcels
- 7% Sample
- Sample Streets
- ROW
- Parcels
- Streets



Display by: Species
Symbology: None

You're viewing the JTA Bus Stop Tree Plantings
Phase 1 trees.
Showing 2 of 11 sites.

SHOW ALL TREES **SHOW WORK ORDERS**

Toggle All ?

Live Oak (7)

Winged elm (4)

Charts

Layers

- Council Districts
- Boundary
- City Allocated Parcels
- 7% Sample
- Sample Streets
- ROW
- Parcels
- Streets



Symbology: None

You're viewing the **JTA Bus Stop Tree Plan**
Phase 1 trees.

Showing 1 of 11 sites.

SHOW ALL TREES **SHOW WORK ORDERS**

Toggle All ?

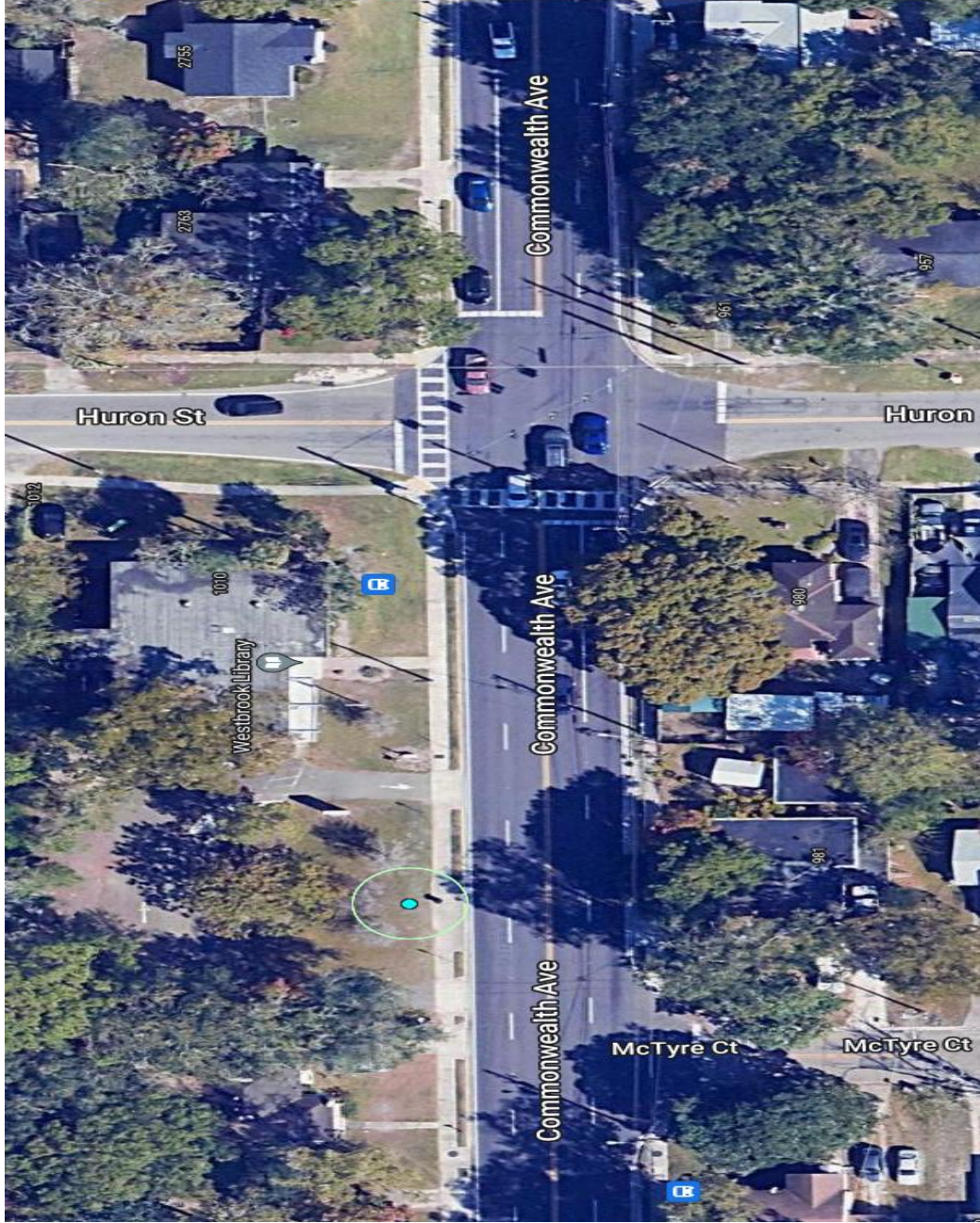
Live Oak (7)

Winged elm (4)

Charts

Layers

- Council Districts
- Boundary
- City Allocated Parcels
- 7% Sample
- Sample Streets
- ROW
- Parcels
- Streets





Layer: Trees ▼

Display by: Species ▼

Symbology: None ▼

You're viewing the **JTA Bus Stop Tree Plantings Phase 1** trees.
Showing 1 of 11 sites.

[SHOW ALL TREES](#) [SHOW WORK ORDERS](#)

Toggle All ?

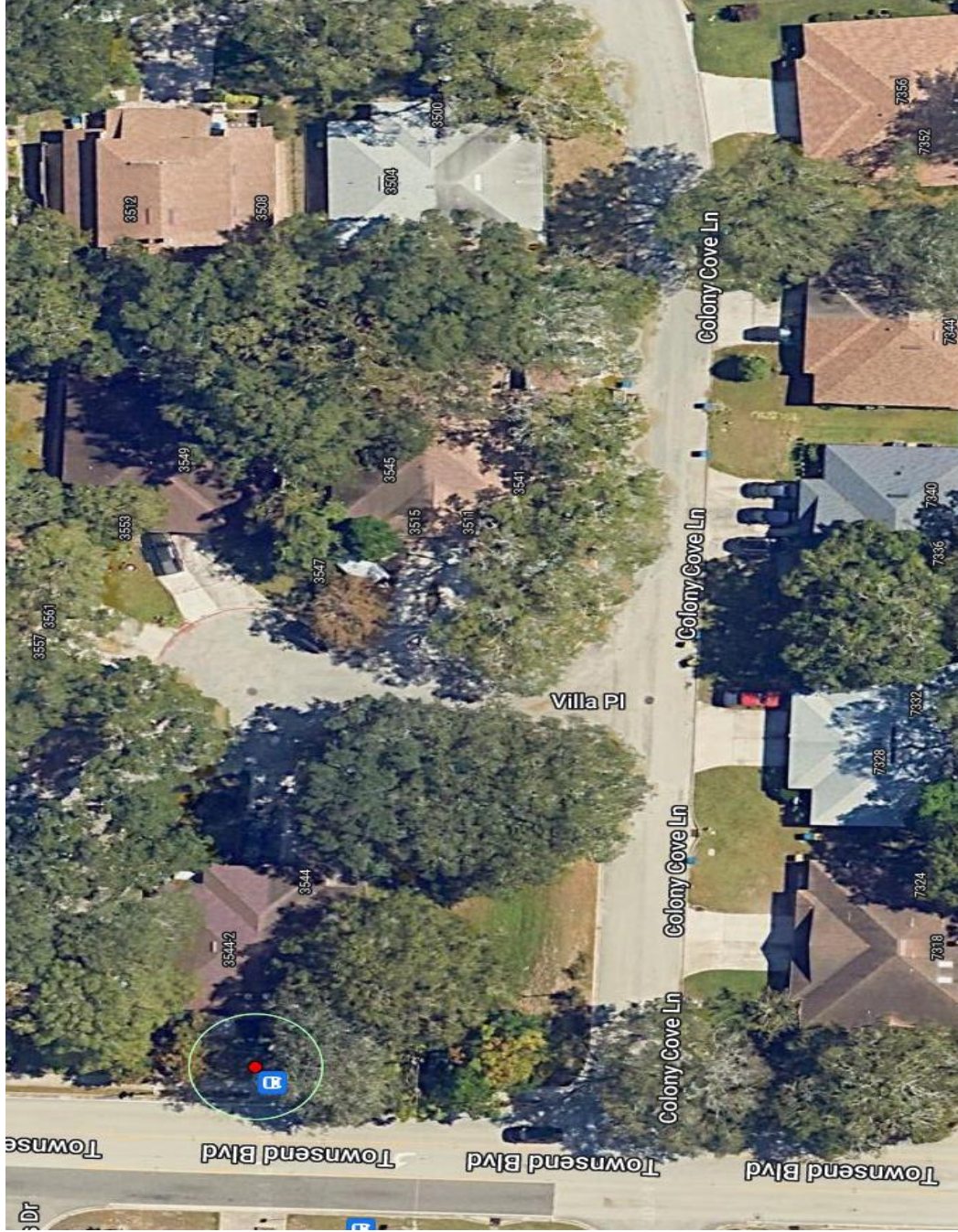
Live Oak (7)

Winged elm (4)

Charts

- #### Layers
- Council Districts
 - Boundary
 - City Allocated Parcels
 - 7% Sample
 - Sample Streets
 - ROW
 - Parcels
 - Streets





Layer:

Display by:

Symbology:

You're viewing the **JTA Bus Stop Tree P Phase 1** trees.
 Showing 1 of 11 sites.

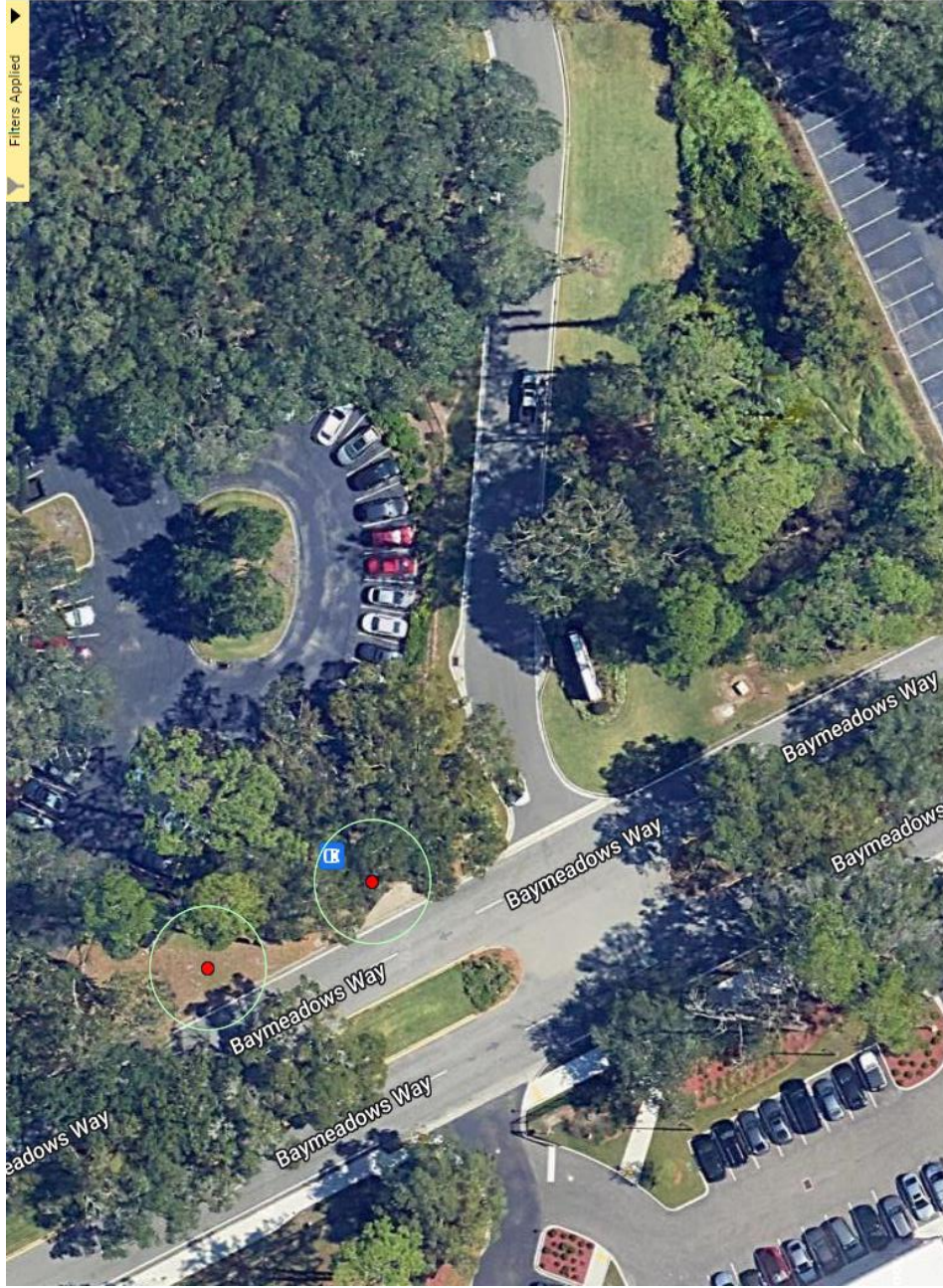
SHOW ALL TREES **SHOW WORK ORDER**

- Toggle All ?
- Live Oak (7)
- Winged elm (4)

Charts

Layers

- Council Districts
- Boundary
- City Allocated Parcels
- 7% Sample
- Sample Streets
- ROW
- Parcels
- Streets



LEGEND

Jacksonville, FL

Layer: Trees

Display by: Species

Symbology: None

You're viewing the JTA Bus Stop Tree Planting Phase 1 trees.
Showing 2 of 11 sites.

SHOW ALL TREES **SHOW WORK ORDERS**

Toggle All

Live Oak (7)

Winged elm (4)

Charts

Layers

- Council Districts
- Boundary
- City Allocated Parcels
- 7% Sample
- Sample Streets
- ROW
- Parcels
- Streets

1 Introduced by Council Member Miller and Co-Sponsored by Council
2 Members Clark-Murray and Johnson and amended by the Neighborhoods,
3 Community Services, Public Health and Safety Committee:
4
5

6 **ORDINANCE 2024-438-E**

7 AN ORDINANCE APPROPRIATING \$6,217,826
8 INCLUDING: (1) \$1,000,000 FROM THE TREE
9 PROTECTION AND RELATED EXPENSES TRUST FUND
10 (CHARTER) AND \$1,717,826 FROM THE CITY-JTA
11 TRANSPORTATION PROJECT PAY-GO FUND (BETTER
12 JACKSONVILLE PLAN) TREE MITIGATION PROJECT TO
13 PROVIDE FUNDING FOR THE COUNTY-WIDE TREE PROGRAM
14 - RIGHT OF WAY FOR REMOVAL AND REPLACEMENT OF
15 DEAD/DYING OR HAZARDOUS TREES ON PUBLIC
16 PROPERTY, (2) \$1,500,000 FROM THE TREE
17 PROTECTION AND RELATED EXPENSES TRUST FUND
18 (CHARTER) TO THE LEVEL 2 TREE PLANTING PROGRAM
19 TO PROVIDE FUNDS FOR TREE PLANTINGS ADMINISTERED
20 BY THE DEPARTMENT OF PUBLIC WORKS ON PUBLIC
21 PROPERTY, AND (3) \$2,000,000 FROM THE TREE
22 PROTECTION AND RELATED EXPENSES TRUST FUND
23 (ORDINANCE) TO THE LEVEL 3 TREE PLANTING PROGRAM
24 TO PROVIDE FUNDS FOR TREE PLANTINGS ON PUBLIC
25 PROPERTY BY THIRD-PARTY APPLICANTS; PROVIDING
26 FOR CONTINUED OVERSIGHT BY THE DEPARTMENT OF
27 PUBLIC WORKS; AMENDING THE 2024-2028 FIVE-YEAR
28 CAPITAL IMPROVEMENT PLAN APPROVED BY ORDINANCE
29 2023-505-E TO REFLECT THE REALLOCATION OF FUNDS
30 FROM THE TREE MITIGATION PROJECT WITHIN THE
31 BETTER JACKSONVILLE PLAN TO THE REMOVE AND

1 REPLACE PROGRAM ACTIVITY; CREATING A NEW SECTION
2 94.107 (EXCEPTIONAL PLANTING PROJECTS REFERRAL
3 TO CITY COUNCIL), CHAPTER 94 (TREE COMMISSION),
4 *ORDINANCE CODE*, TO PROVIDE A PROCESS FOR CITY
5 COUNCIL APPROVAL OF LEVEL 2 AND LEVEL 3 TREE
6 PLANTING PROGRAM PROJECTS THAT EXCEED \$300,000;
7 PROVIDING FOR CODIFICATION INSTRUCTIONS;
8 PROVIDING AN EFFECTIVE DATE.
9

10 **WHEREAS**, the Tree Commission was established by Ordinance
11 2017-635-E, as described in Chapter 94, *Ordinance Code*, which outlines
12 the various duties and responsibilities of the Tree Commission to
13 develop and maintain a healthy tree canopy in the City; and

14 **WHEREAS**, the City currently maintains two Tree Protection and
15 Related Expenses Trust Funds, the first was created pursuant to
16 Section 25.04 of the *Jacksonville City Charter* and the second by
17 Ordinance which is codified in Section 111.760, *Ordinance Code*; and

18 **WHEREAS**, while these Funds are subject to differing guidelines
19 and requirements, they both serve the fundamental mission of planting
20 and maintaining trees along the public rights-of-way and on public
21 lands within the City, so as to mitigate for the loss or destruction
22 of protected trees and to replace the tree canopy in the City that
23 has been lost through the process of land development; and

24 **WHEREAS**, the County-Wide Tree Planting Program - Right of Way
25 (also known as the "Remove and Replace" Program) was initiated by
26 Ordinance 2018-775-E, to authorize the Department of Public Works to
27 remove trees within the public rights-of-way and public parks of the
28 City that are damaged, dead, in impending decline, or that have become
29 a hazard to the public health, safety and welfare, and to replace
30 such trees within certain established guidelines; and

31 **WHEREAS**, during its meeting on February 21, 2024, the Tree

1 Commission voted to recommend appropriating funds to the Remove and
2 Replace Program in the total amount of \$2,717,826, including
3 \$1,000,000 from the Tree Protection and Related Expenses Trust Fund
4 created by Charter and \$1,717,826 from the Better Jacksonville Plan
5 Tree Mitigation Activity as evidenced by the meeting minutes attached
6 hereto as **Exhibit 1**; and

7 **WHEREAS**, during that same meeting, the Tree Commission also
8 voted to recommend appropriating funds from the Tree Protection and
9 Related Expenses Fund created by the Charter to the Level 2 Tree
10 Planting Program in the amount of \$1,500,000; and

11 **WHEREAS**, subsequently, during its meeting on April 17, 2024,
12 the Tree Commission voted to recommend increasing the funding for the
13 Level 3 Tree Planting Program to \$2,000,000 with a recommendation
14 that these dollars should be appropriated from the Tree Protection
15 and Related Expenses Trust Fund established by Ordinance in Chapter
16 111, *Ordinance Code*, as reflected in the minutes from said meeting
17 attached hereto as **Exhibit 2**; now therefore

18 **BE IT ORDAINED** by the Council of the City of Jacksonville:

19 **Section 1. Appropriation.** For the 2023-2024 fiscal year,
20 within the City's budget, there are hereby appropriated the sum(s)
21 from the account(s) listed in subsections (a) to the account(s) listed
22 in subsection (b):

23 (The account information is attached hereto as **Revised Exhibit 3**,
24 labeled as "Revised Exhibit 3, Rev B.T., June 17, 2024 - NCSPHS" and
25 incorporated herein by this reference)

26 (a) Appropriated from:

27 See **Revised Exhibit 3** \$6,217,826

28 (b) Appropriated to:

29 See **Revised Exhibit 3** \$6,217,826

30 (c) **Explanation of the appropriation:**

31 The funding above represents a total appropriation of

1 \$6,217,826 which includes: \$1,000,000 from the Tree
2 Protection and Related Expenses Trust Fund (Charter) and
3 \$1,717,826 from the City - JTA Transportation Project Pay-
4 Go Tree Mitigation Project to the County-Wide Tree Program
5 - Right of Way activity (the "Remove and Replace" Program)
6 to provide funding for removal and replacement of diseased,
7 deceased and declining trees within the City's rights-of-
8 way and parks, (2) \$1,500,000 from the Tree Protection and
9 Related Expenses Trust Fund (Charter) to fund the
10 continuation and expansion of the City's Level 2 Tree
11 Planting Program (the "Level 2 Program"), and (3)
12 \$2,000,000 from the Tree Protection and Related Expenses
13 Trust Fund (Ordinance) to fund the continuation and
14 expansion of the City's Level 3 Tree Planting Program (the
15 "Level 3 Program").

16 **Section 2. Purpose.** The purpose of the appropriation in
17 Section 1 is to provide funding for the City's Remove and Replace
18 Program wherein the Department of Public Works removes and replaces
19 trees within the City's public rights-of-way and parks that are
20 damaged, dead, in impending decline, or a hazard to the public health,
21 safety and welfare. In addition, this appropriation provides funds
22 for the continuation and expansion of the City's Level 2 Program
23 which allows for tree plantings on public property by the Department
24 of Public Works. Finally, this appropriation will also provide funds
25 for the continuation and expansion of the City's Level 3 Program
26 which allows third-party applicants to seek funding for tree plantings
27 in Duval County which are overseen by the Department of Public Works.

28 **Section 3. Oversight Department.** The Public Works
29 Department shall continue to oversee and administer the Programs
30 described herein. The trees that are planted, and any that are removed
31 as part of the planting, shall be recorded electronically on Plan-it

1 Geo, or its equivalent, and shall note the species and size of each,
2 as well as the date of planting or removal.

3 **Section 4. Capital Improvement Plan Amendment.** Ordinance
4 2023-505-E, adopting the 2024-2028 Five-Year Capital Improvement Plan
5 ("CIP") for the City and certain of its independent agencies, is
6 hereby amended to reflect the appropriation of funds from the Tree
7 Mitigation Project of the Better Jacksonville Plan within the CIP to
8 the City's County-Wide Tree Program - Right-of-Way (Remove and Replace
9 Program) activity, as more fully described in the Project Information
10 Sheet, attached hereto as **Revised Exhibit 4**, labeled as "Revised
11 Exhibit 4, Rev CIP Sheet, June 17, 2024 - NCSPHS" and incorporated
12 herein by this reference. The City Council finds that the deferral
13 of this amendment to the CIP until the next annual budget and CIP
14 review will be detrimental to the best interests of the community
15 because such deferral will delay allocation of these funds to support
16 continuation and expansion of the Remove and Replace Program as
17 authorized herein.

18 Pursuant to Section 122.605(c), *Ordinance Code*, enactment of
19 this Ordinance requires the affirmative vote of two-thirds of the
20 City Council members present at the meeting because of the CIP
21 amendment set forth in this Section. This Ordinance shall constitute
22 an amendment to Ordinance 2023-505-E. In all other respects, the
23 Five-Year Capital Improvement Plan approved by Ordinance 2023-505-E
24 shall remain unchanged and continue in full force and effect.

25 **Section 5. Creating a new Section 94.107 (Exceptional**
26 **Planting Projects Referral to City Council), Chapter 94 (Tree**
27 **Commission), Ordinance Code.** A new Section 94.107 (Exceptional
28 Planting Projects Referral to City Council), Chapter 94 (Tree
29 Commission), *Ordinance Code*, is hereby created to read as follows:

30 **Chapter 94. TREE COMMISSION**

31 * * *

1 **Sec. 94.107. - Exceptional Planting Projects Referral to City Council.**

2 For the purposes of this Section, the term "Exceptional Planting
3 Project" shall apply to any planting project that in whole or in
4 cumulative portions or stages exceeds \$300,000.

5 (a) An Exceptional Planting Project in the Level 2 and Level 3
6 Planting Programs, as described by Ordinances 2019-89-E
7 and 2020-213-E, respectively, receiving a favorable
8 recommendation from both the Tree Commission and the
9 Mayor's Budget Review Committee shall require Council
10 approval prior to commencement of the Exceptional Planting
11 Project. The Council shall give great weight to the
12 recommendation by the Tree Commission. For the purposes of
13 this Section, the term "favorable recommendation" means
14 that the Exceptional Planting Project is approved, approved
15 with conditions, or approved with modifications by the
16 reviewing entities.

17 **Section 6. Codification Instructions.** The Codifier and the
18 Office of General Counsel are authorized to make all chapter and
19 division "tables of contents" consistent with the changes set forth
20 herein. Such editorial changes and any other necessary to make the
21 *Ordinance Code* consistent with the intent of this legislation are
22 approved and directed herein, and changes to the *Ordinance Code* shall
23 be made forthwith and when inconsistencies are discovered.

24 **Section 7. Effective Date.** This Ordinance shall become
25 effective upon signature by the Mayor or upon becoming effective
26 without the Mayor's signature.

1 Form Approved:

2

3 /s/ Mary E. Staffopoulos

4 Office of General Counsel

5 Legislation Prepared By: Shannon MacGillis

6 GC-#1635232-v1-2024-438-E.docx

City of Jacksonville

Tree Commission

Financial Highlights

June 30, 2024

1. Combined Revenues YTD are \$4.35 million compared to \$4.26 million on June 23. An increase of \$91.62 thousand year-on-year.
2. Combined Expenses YTD are \$4.83 million compared to \$2.43 million on June 23. An increase of \$1.98 million year-on-year.
3. Combined Revenues for June 24 were \$339.1 thousand compared to \$612.9 thousand for June 23, a decrease of \$273.3 thousand. Meanwhile, expenses were \$821.3 thousand and \$233.8 thousand on June 24 and June 23, respectively.
4. Total unallocated funds were \$22.59 million for June 24.
5. The reduction in Unappropriated/Unallocated funds is due to the passing of Ordinance 2024-438, which appropriated funds to Activities 378, \$1.0 million, and 1315, \$1.5 million.
6. Better Jacksonville funds were also appropriated to activity 378 but are in another fund. The details are listed on page 10 at the bottom of the page.
7. The website number for "Available For Appropriation" was significantly reduced with the movement of the BJP funds to activity 378. This is a technical issue that we will work with IT to resolve. The funds have been moved in the accounting system, and the software needs to be updated.

**City of Jacksonville
Tree Commission
Financials Combined
Balance Sheet
June 30, 2024**

Cash	35,309,644.41	
-------------	---------------	--

Accounts Payable	542,537.05	
-------------------------	------------	--

Fund Balance		
Beginning Fund Balance	35,242,058.16	
YTD Gain\Loss	(474,950.80)	
Adjusted Fund Balance	34,767,107.36	

Available Balance Calculation

Cash	35,309,644.41	Bank Funds
Less:		
AP	542,537.05	Accounts Payable
Funds Available	9,671,561.51	Appropriated Funds by City Council
Encumbrances (Open POs)	4,221,597.19	Appropriated and Allocated
Sub-Total Adjustments	14,435,695.75	
Unappropriated/Unallocated	20,873,948.66	
Appropriated/Unallocated *	1,717,826.00	Better Jacksonville Plan * Moved to County-Wide Tree Prog
Total Unallocated Funds	22,591,774.66	

* Better Jacksonville funds were appropriated to Activity 378 - County Wide Tree Prog Right of Way Not in Ordinance Fund.

City of Jacksonville
Tree Commission
Financials Combined
Statement of Activity
June 30, 2024

	Actuals		Budget
	30-Jun	YTD	
Revenues			
Ordinance appropriation			530,506.00
Tree Mitigation Funds - Article 25	60,677.00	1,002,718.00	
Investment Pool Earnings	135,462.85	1,035,880.94	
Contributions From Private Sources	126,390.00	2,288,262.00	
Misc Sales and Charges	-	2,200.20	
Contribution-Loss Deductible	16,621.75	24,736.24	
Transfer from fund balance	-	-	
Total	339,151.60	4,353,797.38	530,506.00
Expenses			
Summarized expenses	821,358.15	4,828,748.18 *	18,721,906.88
Net			
	(482,206.55)	(474,950.80)	(18,191,400.88)

* Budget is comprised of current year budget and prior year carry forward.

City of Jacksonville
Tree Commission
Ordinance - 15304 - Tree Protection & Related Expenditures
Balance Sheet
June 30, 2024

<u>Equity in Pooled Cash</u>	25,565,260.36
-------------------------------------	---------------

<u>Accounts Payable</u>	542,537.05
--------------------------------	------------

<u>Fund Balance</u>	
Beginning Fund Balance	26,175,218.96
YTD Gain\Loss	<u>(1,152,495.65)</u>
Adjusted Fund Balance	<u>25,022,723.31</u>

<u>Available Balance Calculation</u>	
Cash	25,022,723.31
Less:	
AP	542,537.05
Funds Available(Budget)	9,671,561.51
Encumbrances (Open POs)	<u>4,221,597.19</u>
Sub-Total Adjustments	<u>14,435,695.75</u>

Unappropriated/Unallocated	<u><u>10,587,027.56</u></u>
-----------------------------------	-----------------------------

City of Jacksonville
Tree Commission
Ordinance - 15304 - Tree Protection & Related Expenditures
Statement of Activity
June 30, 2024

	<u>30-Jun</u>	<u>YTD</u>	<u>Budget</u>
Revenues			
Ordinance appropriation			530,506.00
Tree Mitigation Funds - Article 25	35,397.00	599,229.00	
Investment Pool Earnings	98,736.49	761,825.09	
Contributions From Private Sources	126,390.00	2,288,262.00	
Misc Sales and Charges	-	2,200.20	
Contribution-Loss Deductible	16,621.75	24,736.24	
Total Revenue	<u>277,145.24</u>	<u>3,676,252.53</u>	<u>530,506.00</u>
Expenses			
Expenses *	821,358.15	4,828,748.18	18,721,906.88
Net	<u>(544,212.91)</u>	<u>(1,152,495.65)</u>	<u>(18,191,400.88)</u>

* Budget is comprised of current year budget and prior year carry forward.

City of Jacksonville
Tree Commission
Charter - 15305- Tree Mitigation & Related Expenditures
Balance Sheet
June 30, 2024

<u>Equity in Pooled Cash</u>	9,744,384.05
-------------------------------------	--------------

<u>Accounts Payable</u>	-
--------------------------------	---

<u>Fund Balance</u>	
Beginning Fund Balance 10/1/22	9,066,839.20
YTD Gain\Loss	677,544.85
Adjusted Fund Balance	<u>9,744,384.05</u>

Available Balance Calculation	
Cash	9,744,384.05
Less:	
AP	
Funds Available	
Encumbrances (Open POs)	<u>-</u>
Sub-total	<u>-</u>

<u>Unappropriated/Unallocated</u>	<u><u>9,744,384.05</u></u>
--	----------------------------

City of Jacksonville
Tree Commission
Charter - 15305- Tree Mitigation & Related Expenditures
Statement of Activity
June 30, 2024

	Actuals		Budget
	30-Jun	YTD	
Revenues			-
Tree Mitigation Funds - Article 25	25,280.00	403,489.00	
Investment Pool Earnings	36,726.36	274,055.85	
	62,006.36	677,544.85	
Expenses			-
	-	-	
Net	62,006.36	677,544.85	-

Month of: As of 6/30/2024

Ledger COJ PL - Modified Accrual

Fund 15304 Tree Protection & Related

Account	Description	Beginning Balance (USD)	Debits (USD)	Credits (USD)	Ending Balance (USD)
104001	Equity in Pooled Cash Account	27,171,052.86	1,036,026.89	278,585.74	27,928,494.01
104201	Cash - JP Accounts Payable	-109,104.00	0.00	14,364.00	-123,468.00
104206	Cash - JP General Deposit	113,365.12	3,712,655.77	5,009,138.73	-1,183,117.84
104299	Bank Clearing	-129,194.29	5,138,286.55	5,646,778.96	-637,686.70
104998	Zero Invoice Clearing	-2,077.50	0.00	0.00	-2,077.50
104999	Cash Clearing	-416,883.61	0.00	0.00	-416,883.61
201101	Vouchers Payable Account	-450,212.43	6,123,714.65	6,216,039.27	-542,537.05
216101	Accrued Payroll Payable	-1,727.19	1,727.19	0.00	0.00
284101	Fund Balance - Unassigned Account	-26,175,218.96	0.00	0.00	-26,175,218.96
					1,152,495.65
					-25,022,723.31
343750	Tree Mitigation Funds - Article 25	0.00	0.00	599,229.00	-599,229.00
361101	Investment Pool Earnings	0.00	87,959.85	849,784.94	-761,825.09
366020	Contributions From Private Sources	0.00	27,729.00	2,315,991.00	-2,288,262.00
369050	Miscellaneous Sales and Charges	0.00	0.00	2,200.20	-2,200.20
369400	Contribution-Loss Deductible	0.00	0.00	24,736.24	-24,736.24
512010	Permanent and Probationary Salaries	0.00	51,346.29	1,523.85	49,822.44
521020	Medicare Tax	0.00	695.58	20.48	675.10
522070	Disability Trust Fund-ER	0.00	153.98	4.57	149.41
522130	GEPP Defined Contribution DC-ER	0.00	6,007.57	178.29	5,829.28
523010	Group Dental Plan	0.00	135.00	0.00	135.00
523030	Group Life Insurance	0.00	76.68	0.00	76.68
523040	Group Hospitalization Insurance	0.00	7,889.58	0.00	7,889.58
524001	City Employees Worker's Compensation	0.00	2,930.00	0.00	2,930.00
545020	General Liability Insurance	0.00	272.50	0.00	272.50
549006	Trust Fund Authorized Expenditures	0.00	5,792,621.77	1,031,793.58	4,760,828.19
549032	Clothing, Clean, Shoe Transfer Allow	0.00	140.00	0.00	140.00
Total for Fund 15304		0.00	21,990,368.85	21,990,368.85	1,152,495.65

Trial Balance Report

Report Date

7/1/2024

Month of: As of 6/30/24

Ledger

Fund 15305 Tree Mitigation & Related Expense

Account	Description	Beginning Balance (USD)	Debits (USD)	Credits (USD)	Ending Balance (USD)
104001	Equity in Pooled Cash Account	8,030,365.20	382,017.26	60,701.41	8,351,681.05
104201	Cash - JP Accounts Payable	-1,785.00	0.00	0.00	-1,785.00
104206	Cash - JP General Deposit	1,038,259.00	425,742.00	69,513.00	1,394,488.00
220902	Building Permit - Deposits	0.00	7,310.00	7,310.00	0.00
284101	Fund Balance - Unassigned Account	-9,066,839.20	0.00	0.00	-9,066,839.20
					-677,544.85
					-9,744,384.05
343750	Tree Mitigation	0.00	60,316.00	463,805.00	-403,489.00
361101	Investment Pool	0.00	26,378.41	300,434.26	-274,055.85
Total for		0.00	901,763.67	901,763.67	-677,544.85

9,744,384.05

End of Report

As of 6/30/2024

Review Budgetary Control Balances

Done

Control Budget: CDL Detail Budget

Search

Amount Type: Year to date

Budget Period: Jun-24

Funds Available: All amounts

Currency: USD

* Fund: 15304

* Center: All Center Values

* Account: 500000

* Project: All Project Values

* Activity: All Activity Values

* Interfund: All Interfund Values

* Future: All Future Values

Search Reset Save

Budget Balances

View Transfer Budget

Fund	Center	Account	Project	Activity	Interfund	Year to Date Period	Initial Budget	Budget Adjustments	Total Budget	Commitments	Obligations	Expenditures	Total Consumption	Funds Available Amount
15304	154006	514010	000000	00000000	00000	Jun-24	0.00	-3,655.79	-3,655.79	0.00	0.00	0.00	0.00	-3,655.79
15304	154006	521020	000000	00000000	00000	Jun-24	1,023.00	-54.04	968.96	0.00	0.00	675.10	675.10	293.86
15304	154006	522070	000000	00000000	00000	Jun-24	211.00	-6.56	204.44	0.00	0.00	149.41	149.41	55.03
15304	154006	522130	000000	00000000	00000	Jun-24	8,227.00	-248.21	7,978.79	0.00	0.00	5,829.28	5,829.28	2,149.51
15304	154006	523010	000000	00000000	00000	Jun-24	180.00	-330.00	-150.00	0.00	0.00	135.00	135.00	-285.00
15304	154006	523030	000000	00000000	00000	Jun-24	124.00	123.00	247.00	0.00	0.00	76.68	76.68	170.32
15304	154006	523040	000000	00000000	00000	Jun-24	10,519.00	-6,408.38	4,110.62	0.00	0.00	7,889.58	7,889.58	-3,778.96
15304	154006	524001	000000	00000000	00000	Jun-24	3,516.00	-0.04	3,515.96	0.00	0.00	2,930.00	2,930.00	585.96
15304	154006	545020	000000	00000000	00000	Jun-24	327.00	26.63	353.63	0.00	0.00	272.50	272.50	81.13
15304	154006	549006	000000	00000000	00000	Jun-24	435,924.00	75,282.17	511,206.17	0.00	197,387.84	238,536.16	435,924.00	75,282.17
15304	154006	549032	000000	00000000	00000	Jun-24	140.00	-240.00	-100.00	0.00	0.00	140.00	140.00	-240.00
15304	154007	549006	000000	00000000	00000	Jun-24	0.00	2,812,553.02	2,812,553.02	0.00	226,422.72	340,425.48	566,848.20	2,245,704.82
Total							530,506.00	18,191,400.88	18,721,906.88	0.00	4,221,597.19	4,828,748.18	9,050,345.37	9,671,561.51

Columns Hidden 11 Columns Frozen 7



	<u>6/30/2024</u>	<u>5/31/2024</u>	<u>MoM Variance</u>
Total Budget	18,721,906.88	16,646,906.88	2,075,000.00
Encumbrance	4,221,597.19	4,940,829.47	(719,232.28)
Available Funds	9,671,561.51	7,698,046.00	1,973,515.51

City of Jacksonville
Tree Commission
Activity/Project Status as of 6/30/2024

		Budget	Obligation	Expenditures	Funds Available
		6/30/2024	6/30/2024	6/30/2024	6/30/2024
151004-PWOD Tree Mitigation & Related Expenses - Conservation and Resource Manag	00000378-County-Wide Tree Prog-Remove - Replace	3,593,411.85	1,472,020.19	1,901,050.77	220,340.89
151004-PWOD Tree Mitigation & Related Expenses - Conservation and Resource Manag	00000541-Hammond Blvd Project	10,283.00	-	-	10,283.00
151004-PWOD Tree Mitigation & Related Expenses - Conservation and Resource Manag	00000982-Tree Protection & Related Expenses	2,294.73	-	-	2,294.73
151004-PWOD Tree Mitigation & Related Expenses - Conservation and Resource Manag	00001315-Level 2 Tree Planting Program	7,892,611.58	2,220,038.29	2,280,815.78	3,391,757.51
151004-PWOD Tree Mitigation & Related Expenses - Conservation and Resource Manag	00001316-Moncrief Rd Beautification Project	140,238.62	-	-	140,238.62
151004-PWOD Tree Mitigation & Related Expenses - Conservation and Resource Manag	00001623-Level 3 Tree Planting Program	3,677,648.60	105,728.15	-	3,571,920.45
		15,316,488.38	3,797,786.63	4,181,866.55	7,336,835.20
154006-PWML Tree Maintenance - Other Physical Environment	00000000-No Activity	592,865.48	197,387.84	306,456.15	89,021.49
	All Activity Values	592,865.48	197,387.84	306,456.15	89,021.49
154007-PWML 630-City Tree Planting Prog - Other Physical Environment	00000000-No Activity	2,812,553.02	226,422.75	340,425.48	2,245,704.79
	All Activity Values	2,812,553.02	226,422.75	340,425.48	2,245,704.79
		3,405,418.50			
		18,721,906.88	4,221,597.22	4,828,748.18	9,671,561.48
City - JTA Transprotation Project					
151004-PWOD Tree Mitigation & Related Expenses - Conservation and Resource Manag	00000378-County-Wide Tree Prog-Remove - Replace	1,717,826.00	-	-	1,717,826.00



TREE MITIGATION CITY OF JACKSONVILLE



TREE REMOVAL PERMIT INFORMATION

Click here to search detailed information on Site Clearing and Tree Removal Permits. In reviewing tree removal information on a specific permit, for "B" permits click on the Spec 2 tab; for "L" permits click on the Tree Mitigation tab.



TREE FUND CITY PLANTING PROJECTS

Click here to search detailed information about City Tree Fund Planting Projects.



AVAILABLE FOR APPROPRIATION

15F (Ordinance): \$11,030,828.12
15N (Charter): \$7,200,347.69
Better Jacksonville Plan - Tree Mitigation Project: \$0.00
Total: \$18,231,175.81



FILE AN ISSUE

Click here to report site clearing or tree removal without a permit, or to request tree maintenance on public property. In the CARE System, select "Tree Remove or Landscape Violation" from the dropdown.

Disclaimer: The AVAILABLE FOR APPROPRIATION information shown on this page is updated nightly from the City's financial records, but does not include any pending appropriations, or other financial transactions of the funds which have not been completed.



If you experience difficulty viewing or accessing the documents provided on this site, or navigating this application's table features, using any assistive technology please contact the Disabled Services Division at 904-630-4940 or 904-630-4933 (TTY) to request an accommodation.

© 2024 - Official City of Jacksonville and Duval County Government Website, All Rights Reserved.

Version: 1.0.0.6

Since 2017**15F Remove and Replace**

15304 Ordinance Funds Available for Appropriation: As of 07/01/2024 there is \$11,030,828.12

Appropriated	Date	Project	Purchase Order Amount	Date	Remainder	Status
\$300,000.00	Nov-18					
\$2,000,000.00	Nov-19					
\$2,000,000.00	Apr-21					
\$4,000,000.00	Dec-22					
		Remove and Replace	\$1,250,000.00	11/18/2020	\$20,768.56	Open
		8th Street	\$37,078.00	7/8/2022	\$1,854.00	Open
		Atlantic Blvd	\$26,483.50	8/31/2022	\$2,628.10	Open
		Round 13	\$14,300.00	1/17/2023	\$1,430.00	Open
		Parks Replacement (FY23)	\$336,365.00	4/24/2023	\$105,176.00	Open
		Round 16	\$34,070.55	5/11/2023	\$6,814.11	Open
		Old River Road	\$1,141.60	8/17/2023	\$292.32	Open
		Round 18	\$49,650.00	9/15/2023	\$11,254.00	Open
		Parks R&R Removals	\$700,000.00	11/3/2023	\$346,264.06	Open
		PW/M L R&R Removals	\$1,000,000.00	11/3/2023	\$311,315.91	Open
		Parks Replacement (FY24)	\$500,000.00	11/27/2023	\$324,989.00	Open
		Round 19	\$52,900.00	11/15/2023	\$10,580.00	Open
		Baymeadows R&R	\$169,819.05	12/21/2023	\$33,963.81	Open
		Round 20	\$63,000.00	1/19/2024	\$12,600.00	Open
		Round 21	\$1,547.20	1/18/2024	\$309.44	Open
		Old Saint Augustine R&R	\$55,877.46	2/14/2024	\$11,175.49	Open
		Round 22	\$25,425.81	3/6/2024	\$25,425.81	Open
		Fort Caroline R&R	\$185,252.23	3/28/2024	\$37,050.45	Open

15F Remove and Replace

15304 Ordinance Funds Available for Appropriation: As of 07/01/2024 there is \$11,030,828.12

Appropriated	Date	Project	Purchase Order Amount	Date	Remainder	Status
		8028 Concord Blvd W	\$871.20	5/1/2024	\$174.24	Open
		2024-03	\$90,400.00	5/2/2024	\$90,400.00	Open
		Greenland Road R&R	\$101,044.45	5/8/2024	\$20,208.89	Open
		2024-04	\$108,600.00	5/14/2024	\$108,600.00	Open
		Total	\$8,673,123.36	Total	\$1,483,274.19	
				Available for 15F Remove and Replace Allocation	\$220,340.89	

Definitions of Terms

Available for Appropriation- Requires City Council Approval

Allocated- Already been approved by City Council/Tree Commission and MBRC approved funds

Obligation- Funds have been assigned to a project and a purchase order has been issued

Green fill indicates amount available in pool of money

Orange Fill indicated total money for column

Since 2017

BJP Remove and Replace

Better Jacksonville Plan- Tree Mitigation Dollars available for Appropriation: As of 07/01/2024 there is \$0

Appropriated	Date	Project	Purchase Order Amount	Date	Remainder	Status
\$1,717,826.00	Jun-24					
\$1,717,826.00	Total	Total	\$0.00	Total	Available for BJP Remove and Replace Allocation	\$1,717,826.00

Definitions of Terms

Available for Appropriation- Requires City Council Approval

Allocated- Already been approved by City Council/Tree Commission and MBRC approved funds

Obligation- Funds have been assigned to a project and a purchase order has been issued

Green fill indicates amount available in pool of money

Orange fill indicated total money for column

Since 2017

630-City

15304 Ordinance Funds Available for Appropriation: As of 07/01/2024 there is \$11,030,828.12

Appropriated	Date	Project	PO #	Purchase Order Amount	Date	Remainder	Status
\$200,000.00	Nov-18						
\$1,600,000.00	Aug-19						
\$2,000,000.00	Nov-21						
\$2,000,000.00	Dec-22						
		630-City Round 20	669204-24	\$129,681.60	12/4/2023	\$25,936.32	Open
		630-City Round 21	671835-24	\$74,140.80	2/2/2024	\$74,140.80	Open
		630-City Round 22		\$126,345.60	6/28/2024	\$126,345.60	Open
\$5,800,000.00	Total	Total		\$4,608,809.22	Total	\$226,422.72	
					Available for 630-City Allocation	\$2,245,704.82	

Definitions of Terms

Available for Appropriation- Requires City Council Approval

Allocated- Already been approved by City Council/Tree Commission and MBRC approved funds

Obligation- Funds have been assigned to a project and a purchase order has been issued

Green fill indicates amount available in pool of money

Orange Fill indicated total money for column

Since 2017

15F Level 2

15304 Ordinance Funds Available for Appropriation. As of 07/01/2024 there is \$11,030,828.12

Appropriated	Date	Project	Allocation	Date	PO#	Purchase Order Amount	Date	Remainder	Status
\$1,000,000.00	Feb-19								
\$2,000,000.00	Jan-20								
\$2,000,000.00	Jan-21								
\$2,000,000.00	Aug-21								
\$8,000,000.00	Jun-22								
		Park Street Rd Diet	\$399,526.00	6/16/2021	627876-21	\$399,526.00	8/24/2021	\$399,526.00	On Hold
		Jax Beach Level 2	\$277,789.50	9/22/2021	635456-22	\$277,789.50	1/12/2022	\$13,889.46	Open
		Columbia Parkway Retention Pond	\$51,840.00	12/15/2021	635922-22	\$51,840.00	1/21/2022	\$2,592.00	Open
		Jarboe Park	\$145,918.00	12/15/2021	636025-22	\$145,918.00	1/24/2022	\$7,295.90	Open
		Northbank Riverwalk	\$138,801.00	12/15/2021	641986-22	\$116,125.00	5/17/2022	\$11,612.50	Open
		Fishweir Park	\$40,014.00	3/23/2022	643483-22	\$40,014.00	6/23/2022	\$4,001.40	Open
		District 7 Parks	\$106,000.00	1/1/1900	658550-23	\$94,000.00	4/25/2023	\$18,800.00	Open
		District 5 Parks	\$457,600.00	4/20/2022	658778-23	\$280,250.00	4/28/2023	\$56,050.00	Open
		Odenwood Park Blvd	\$86,319.00	5/18/2022	643807-22	\$86,319.00	6/30/2022	\$4,315.95	Open
		Hanna Park	\$268,584.80	6/13/2022	645797-22	\$268,584.80	8/15/2022	\$26,858.48	Open
		Saint Johns Bluff Rd	\$388,238.50	7/20/2022	646462-22	\$388,238.50	8/29/2022	\$38,823.84	Open
		Collins Road	\$338,265.00	9/21/2022	651453-23	\$338,265.00	11/23/2022	\$33,826.50	Open
		College Street							
		Parking Medians	\$13,019.00	11/16/2022	652784-23	\$13,019.00	12/21/2022	\$1,301.90	Open
		Airport Center Drive East	\$153,643.00	11/16/2022	652783-23	\$153,643.00	12/29/2022	\$23,046.45	Open
		GoldStar Phase 2	\$2,300,000.00	12/21/2022	661801-23	\$1,141,500.00	7/14/2023	\$228,300.00	Open
		GoldStar Phase 2 Prosser	\$121,345.16	12/21/2022	644186-22	\$121,345.16	7/11/2022	\$8,573.23	Open
		Fort Caroline Rd Pond	\$61,479.00	2/15/2023	656847-23	\$61,479.00	3/21/2023	\$9,221.85	Open
		Kernan Blvd N	\$591,059.00	2/15/2023	656956-23	\$591,059.00	3/23/2023	\$8,658.85	Open
		Price Park	\$27,216.00	4/19/2023	659331-23	\$27,216.00	5/11/2023	\$4,082.40	Open
		Amelia View Phase 2	\$62,370.00	4/19/2023	659333-23	\$62,370.00	5/11/2023	\$12,474.00	Open
		Parks Northwest Districts	\$321,440.00	4/19/2023	660246-23	\$321,440.00	6/6/2023	\$64,288.00	Open

15F Level 2

15304 Ordinance Funds Available for Appropriation: As of 07/01/2024 there is \$11,030,828.12

Appropriated	Date	Project	Allocation	Date	PO#	Purchase Order Amount	Date	Remainder	Status
		Fletcher and Hollywood Park	\$33,100.00	5/17/2023	661059-23	\$33,100.00	6/27/2023	\$6,400.00	Open
		Gator Bowl	\$41,185.00	7/19/2023	663008-23	\$41,185.00	8/10/2023	\$6,177.75	Open
		Westside Parks	\$402,600.00	7/19/2023	665133-24	\$402,600.00	10/4/2023	\$161,040.00	STW
		7th Street E	\$88,355.00	8/16/2023	664796-23	\$88,355.00	9/14/2023	\$13,253.75	Open
		District 7 and 10 Corridors	\$75,451.50	9/20/2023	667454-24	\$75,451.50	11/1/2023	\$15,090.30	Open
		Hodges Blvd	\$137,667.34	10/18/2023	669765-24	\$137,667.34	12/14/2023	\$27,533.47	Open
		Sheffield Park	\$126,500.00	10/18/2023	670635-24	\$126,500.00	1/10/2024	\$50,600.00	Open
		Lift Evry Voice and Sing Park	\$223,335.00	11/15/2023	670636-24	\$223,335.00	1/10/2024	\$89,334.00	Open
		Northbank Riverwalk Phase 2	\$76,642.50	1/17/2024	674826-24	\$76,642.50	4/2/2024	\$76,642.50	Open
		Parks Senior and Community Centers	\$172,450.00	1/17/2024	674827-24	\$172,450.00	4/2/2024	\$172,450.00	Open
		Southern S-Line Enhancement	\$131,600.00	1/17/2024	674825-24	\$131,600.00	4/2/2024	\$131,600.00	Open
		McGirts Creek Preserve Restoration	\$265,000.00	1/17/2024	674828-24	\$265,000.00	4/2/2024	\$265,000.00	Open
		Various Parks	\$136,800.00	4/17/2024	677561-24	\$136,800.00	5/29/2024	\$136,800.00	Open
\$15,000,000.00	Total	Total	\$13,364,704.11	Total		\$11,065,562.80	Total	\$2,209,460.88	Available for 15F Level 2 Allocation
								\$3,383,184.28	

Definitions of Terms

- Available for Appropriation- Requires City Council Approval
- Allocated- Already been approved by City Council/Tree Commission and MBRC approved funds
- Encumbered- Funds have been assigned to a project and a purchase order has been issued
- Green fill indicates amount available in pool of money
- Orange fill indicated total money for column

Since 2017

15N Level 2

15305 Charter Funds Available for Appropriation: As of 07/01/2024 there is \$7,200,347.69

Appropriated	Date	Project	Allocation	Date	PO#	Purchase Order Amount	Date	Remainder	Status
\$1,500,000.00	Jun-24								
\$1,500,000.00	Total	Total	\$0.00	Total		\$0.00	Total	Available for 15N Level 2 Allocation	\$0.00
								\$1,500,000.00	

Definitions of Terms

- Available for Appropriation:** Requires City Council Approval
- Allocated:** Already been approved by City Council/Tree Commission and MBRC approved funds
- Encumbered:** Funds have been assigned to a project and a purchase order has been issued
- Green fill** indicates amount available in pool of money
- Orange Fill** indicated total money for column

Since 2017

Level 3

15304 Ordinance Funds Available for Appropriation: As of 07/01/2024 there is \$11,030,828.12

Appropriated	Date	Project	Allocation	Date	PO #	Purchase Order Amount	Date	Remainder	Status
\$1,000,000.00	May-20								
\$1,000,000.00	Dec-22								
\$2,000,000.00	Jun-24								
		Jax Zoo	\$209,190.35	3/4/2021	631800-22	\$209,190.35	10/27/2021	\$105,728.15	Open
\$4,000,000.00	Total	Total	\$450,789.35	Total	Total	\$450,749.35	Total	\$105,728.15	
							Available for Level 3 Allocation	\$3,571,920.45	

Definitions of Terms

Available for Appropriation- Requires City Council Approval

Allocated- Already been approved by City Council/Tree Commission and MBRC approved funds

Obligation- Funds have been assigned to a project and a purchase order has been issued

Green fill indicates amount available in pool of money

Orange fill indicates total money for column

Jacksonville Tree Commission

Available Funds Summary (as of July, 2024)

	Jun-24	Jul-24
15F Ordinance Funds Available for Council Appropriation (a)	\$12,927,419.37	\$11,030,828.12
Allocated for Remove and Replace to Public Works (b)	\$220,340.89	\$2,938,166.89
Allocated for 630-City to Public Works (c)	\$2,371,402.42	\$2,245,704.82
Available for Level 2 Allocation by Tree Commission (d)	\$3,383,184.28	\$4,883,184.28
Available for Level 3 Allocation by Tree Commission (e)	\$1,549,250.65	\$3,571,920.45
Total Allocated to PW for 630-City and Remove & Replace (b) + (c)	\$2,591,743.31	\$5,183,871.71
Total Available for Allocation by Tree Commission (d) + (e)	\$4,932,434.93	\$8,455,104.73
15N Charter Funds Available for Council Appropriation (f)	\$9,678,722.69	\$7,200,347.69
BJP Tree Mitigation Dollars available for Council Appropriation (g)	\$1,717,826.00	\$0.00
Total Avail for Appropriation by Council (a) + (f) + (g)	\$24,323,968.06	\$18,231,175.81
Total Avail for Allocation by Tree Commission (d) + (e)	\$4,932,434.93	\$8,455,104.73
Total Funds Not Obligated	\$29,256,402.99	\$26,686,280.54

Encumbered Funds Summary (as of July 2024)

	Jun-24	Jul-24
<i>Obligated Level 2 Proj Funds</i>	\$2,720,758.22	\$2,209,460.88
<i>Obligated Level 3 Proj Funds</i>	\$105,728.15	\$105,728.15
Total Funds Obligated	\$2,826,486.37	\$2,315,189.03

ACTIVE CITY OF JACKSONVILLE LEVEL 2 TREE PLANTING PROJECTS

ATTACHMENT F

Visit <https://pg-cloud.com/JacksonvilleFL/> for City of Jacksonville Tree Project Maps

Visit jaxtreemitigation.coj.net - Tree Fund City Projects for links to legislation and planting details

Requesting Entity	Project Scope	Tree Commission Approval Date	Status	Allocated Amount	Contract/Warranty
Jax Beach Park and ROW	Trees within parks and right of way. 150 trees	Sep-21	Installation Complete	\$277,789.50	Liberty 2/yr
Northbank Riverwalk	Trees along trail and riverside of Northbank Riverwalk/Geffen Park area. 68 trees	Dec-21	Installation Complete	\$116,125.00	Liberty 2/yr
Jarboe Park	Trees along play areas and trails of Jarboe Park. 76 trees	Dec-21	Installation Complete	\$145,918.00	Liberty 2/yr
Columbia Pkwy Retention Pond	Trees along play areas and trails of Jarboe Park. 29 trees	Dec-21	Installation Complete	\$51,840.00	Liberty 2/yr
Fishweir Park	Trees along nature trail. 21 trees	Mar-22	Installation Complete	\$40,014.00	Liberty 2/yr
District 7 Parks	55 trees.	Mar-22	Installation Complete	\$106,000.00	Greenway/1yr
District 5 Parks	195 Trees	Mar-22	Installation Complete	\$452,600.00	Greenway/1yr
Deerwood	Trees along median. 43 trees	May-22	Installation complete	\$86,319.00	Liberty 2/yr
Hanna Park	106 trees	Jun-22	Installation Complete	\$264,584.80	Liberty 2/yr
Saint Johns Bluff Road	Trees along Median. 189 trees	Jul-22	Installation Complete	\$388,238.50	Liberty 2/yr
Collins Road	Trees along median. 183 trees	Sep-22	Installation Complete	\$338,265.00	Liberty 2/yr
Airport Center Drive E	Trees along median. 76 trees	Nov-22	Installation Complete	\$153,643.00	Liberty 2/yr
College Street Parking Islands	Trees in Parking Islands, 4 trees.	Nov-22	Installation Complete	\$13,019.00	Liberty 2/yr
Gold Star Family Memorial Highway Phase 2	Trees within retention ponds and right of way. 1218 trees	Dec-22	Installation Complete	\$2,300,000.00	To Bid 2/yr
Fort Caroline Road Pond	Trees within retention pond. 34 trees	Feb-23	Installation Complete	\$61,479.00	Liberty 2/yr
Kernan Blvd N	Trees within Right of way and Median- 276 trees	Feb-23	Installation Complete	\$591,059.00	Liberty 2/yr
Price Park	Trees within Right of way. 13 trees	Apr-23	Installation Complete	\$27,216.00	Liberty 2/yr
Amelia View Phase 2	Trees within Right of Way. 34 trees	Apr-23	Installation Complete	\$62,370.00	Liberty 2/yr
Northwest Parks	Trees in parks. 202 trees	Apr-23	Installation Complete	\$321,440.00	Greenway/1yr
Fletcher and Hollywood Park	Trees in park. 21 trees	May-23	Installation Complete	\$33,100.00	Greenway/1yr
GatorBowl	Trees in Median. 8 trees	Jul-23	Installation Complete	\$41,185.00	Liberty/2yr

ACTIVE CITY OF JACKSONVILLE LEVEL 2 TREE PLANTING PROJECTS

ATTACHMENT F

Visit <https://pg-cloud.com/JacksonvilleFL/> for City of Jacksonville Tree Project Maps

Visit jaxtreemitigation.coj.net - Tree Fund City Projects for links to legislation and planting details

Requesting Entity	Project Scope	Tree Commission Approval Date	Status	Allocated Amount	Contract/Warranty
Westside Parks Level 2	Trees in Parks (242 trees)	Aug-23	Installation Complete	\$402,600.00	Greenway/1yr
7th Street East	Trees in right of way (42 trees)	Aug-23	Installation Complete	\$41,185.00	Liberty/2yr
District 7 and 10 Corridors	Trees in right of way (39 trees)	Sep-23	Installation Complete	\$75,451.50	Liberty/2yr
Hodges Blvd Level 2	Trees in Median (59 trees)	Oct-23	Installation Complete	\$137,667.34	Liberty/2yr
Sheffield Park Level 2	In park (86 trees)	Oct-23	Installation Complete	\$126,500.00	Greenway/1yr
McGirts Creek Restoration Level 2	In Preserve (12,000 saplings)	Jan-24	Scheduling	\$182,750.00	Greenway/no warranty
Lift Ev'ry Voice and Sing Park Level 2	In Park (90 trees)	Nov-24	Installation Complete	\$233,335.00	Greenway/1yr
Northbank Riverwalk Phase 2	36 trees	Jan-24	Installation Complete	\$76,642.50	Greenway/1yr
Southern S-Line Enhancement	140 trees along S-line	Jan-24	Installing	\$131,600.00	Greenway/1yr
Alden Road	41 Trees along ROW	May-24	Scheduling	\$76,282.56	Liberty 2/yr
Gate Parkway	49 Trees in median and ROW	TBD	Tree Commission	\$123,681.46	Liberty 2/yr
JTA Bus Stops Phase 1	11 trees in ROW	TBD	Tree Commission	\$34,533.86	Liberty 2/yr

Completed CITY OF JACKSONVILLE LEVEL 2 TREE PLANTING PROJECTS

ATTACHMENT B

Visit <https://pg-cloud.com/JacksonvilleFL/> for City of Jacksonville Tree Project Maps
 Visit jaxtreemitigation.coj.net - Tree Fund City Projects for links to legislation and planting details

Requesting Entity	Project Scope	Tree Commission Approval Date	Status	Approp.	Obligated	Contract/Warranty
Executive Director, Tree Hill Nature Center	22 trees requested in Tree Hill amphitheater parking area; site plan complete; no removals required; ready for review pending cost estimate per new countywide tree planting contract.	May-19	Complete	\$21,472.80	\$21,472.80	Liberty 3/mos
Sheffield Elementary School PTA President	10 Trees requested to provide shade for existing play area/field at Sheffield Elementary School; site visit complete - pending design and review.	May-19	Complete	\$20,414.48	\$20,414.48	Davey -1/yr
San Marco Preservation Society and Greenscape, San Marco Tree Planting	102 Trees requested in city right of ways within District 5, includes removal of damaged/diseased trees; site evaluation scheduled	Jun-19	Complete	\$247,749.52	\$247,749.52	Davey -1/yr
Kensington Association HOA Director	54 trees requested within Kensington Lakes city right of ways along Kensington Gardens Blvd. and Kensington Lakes Dr to replace trees lost due to storm damage/disease; may include removals. Planting Plan pending.	Aug-19	Complete	\$124,202.62	\$124,202.62	Davey -1/yr
S-Line Biodiversity Corridor Tree Planting	Installation of 25 trees throughout the S-Line Trail Biodiversity Corridor. This will offer additional tree canopy and shade to the trail.	Aug-19	Complete	\$30,949.40	\$30,949.40	Liberty 3/mos
City Cemetery - citizen request	18 Trees in right of ways on Ionia St. and Jessie St.	Dec-19	Complete	\$41,350.50	\$41,350.50	Liberty 2/yr
Baymeadows East Association Tree Planting	119 Trees in right of ways and medians on Baymeadows East and Fort Family Regional Park	Dec-19	Complete	\$284,900.07	\$284,900.07	Davey -1/yr
Cathedral District Tree Planting	50+ trees requested as Cathedral District (CD7) tree planting, may include removal of damaged/diseased trees. City right of way tree plantings within general proximity but not limited to State St to Catherine St. to Main St. to Adams St.; site evaluation scheduled	Jan-20	Complete	\$120,371.14	\$120,371.14	Liberty 2/yr
Yates Building - Cultural Council of Greater Jacksonville	8 Trees to be installed around renovated fountain at building entrance	Jan-20	Complete	\$38,312.00	\$38,312.00	Liberty 2/yr
Ed Austin Park Tree Planting/Resident request	115 Trees in right of ways around and within Willowbranch Park	Jun-20	Complete	\$214,822.00	\$214,822.00	Liberty 2/yr
Neptune Beach/Residential requests - City of Neptune	Trees within residential Right of Ways - 47 trees	Jul-20	Complete	\$55,490.00	\$55,490.00	Liberty 3/mos
Nathan Krestul Park - Friends of Krestul Park	Trees within Park - 34 trees	Jul-20	Complete	\$63,423.00	\$63,423.00	Liberty 2/yr

Completed CITY OF JACKSONVILLE LEVEL 2 TREE PLANTING PROJECTS

ATTACHMENT B

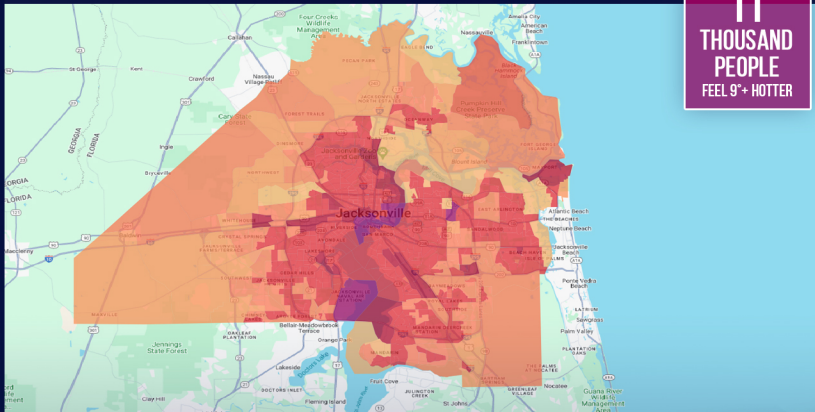
Visit <https://pg-cloud.com/JacksonvilleFL/> for City of Jacksonville Tree Project Maps
 Visit jaxtreemitigation.coj.net - Tree Fund City Projects for links to legislation and planting details

Requesting Entity	Project Scope	Tree Commission Approval Date	Status	Approp.	Obligated	Contract/Warranty
Alexandria Oaks Park/SMPS and Bolles School request	Trees within Park - 15 trees	Jul-20	Complete	\$28,593.00	\$28,593.00	Liberty 2/yr
Huntington Forest Park/Resident request to CM	Trees along Park Right of Way - Buffer - 15 trees	Jul-20	Complete	\$28,026.00	\$28,026.00	Liberty 2/yr
Canopy Place Tree Planting/resident request	Installation of 40 trees in city right of ways and medians to provide additional tree canopy, sound buffer and screening.	Oct-20	Complete	\$117,483.97	\$117,483.97	Davey -1/yr
Sunrise Ridge/resident request	Installation of 40 tree in city right of ways to increase tree canopy as well screening and buffer from adjacent highway.	Oct-20	Complete	\$107,316.52	\$107,316.52	Davey -1/yr
Jacksonville Beach Golf Park/Jax Beach	Installation of 156 trees in city golf course park to increase tree canopy, create screening, and attract wildlife.	Nov-20	Complete	\$147,562.80	\$147,562.80	Liberty 3/mos
Freedom Park/CM & Parks	Trees within newly established park (irrigated) - 38 trees	Dec-20	Complete	\$38,548.00	\$38,548.00	Liberty 3/mos
Blue Cypress Park Restoration/Parks	Trees within park - field restoration - 157 trees	Mar-21	Complete	\$187,154.40	\$187,154.40	Liberty 1/yr
Atlantic Beach/City of Atlantic Beach Phase 2	Trees within Atlantic Beach residential Right of Ways and Parks - 133 trees	May-21	Complete	\$164,404.80	\$164,404.80	Liberty 3/mos
Cobblestone Homeowners Association/residential requests/HOA	Installation of 105 trees in city right of ways and medians to provide additional tree canopy, sound buffer and screening.	Jun-20	Complete	\$192,922.00	\$192,922.00	Liberty 2/yr

JACKSONVILLE URBAN HEAT HOT SPOTS



11
THOUSAND
PEOPLE
FEEL 9°+ HOTTER



Urban heat island intensity (°F) by census block group.
Climate Central analysis based on Sangiorgio (2020) and Demuzere (2020).

Recent Tree Fund Projects with Palm Trees in Lines

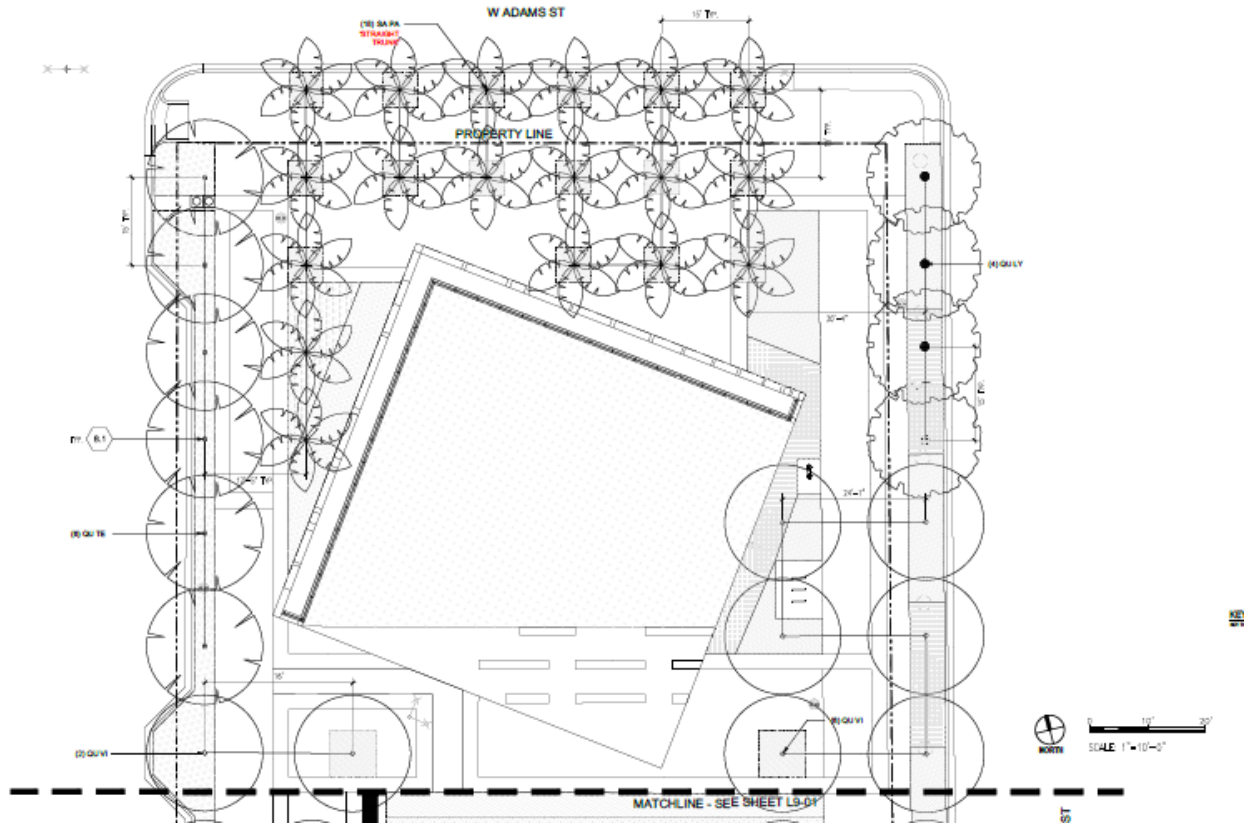
Northbank Riverwalk Phase 2

6 Palms out of 30 trees



Lift Ev'ry Voice

33 Palms out of 91 trees



District 7 and 10 Corridors

12 Palms out of 39 trees

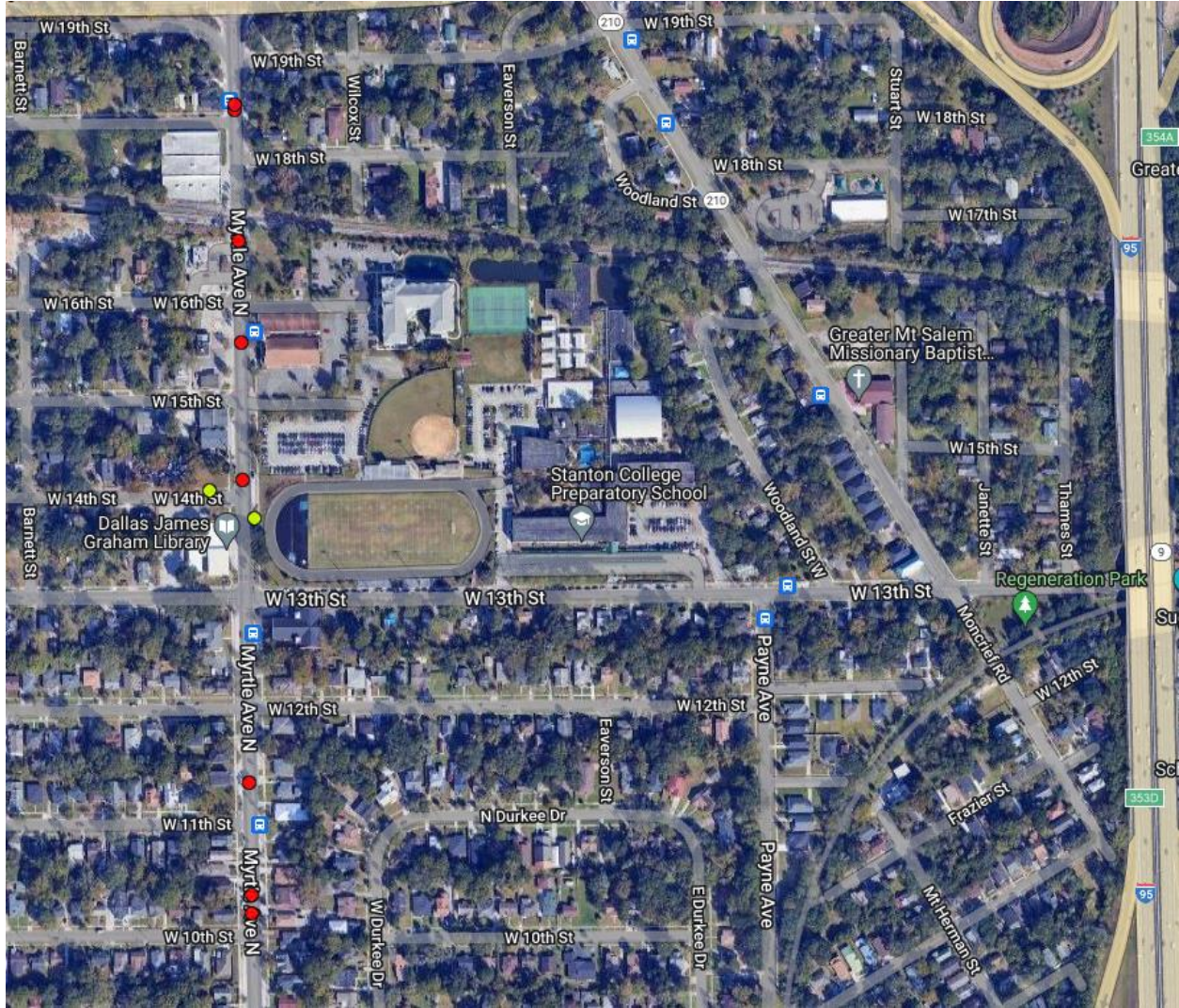


Figure 1 Red Circles are Sabal Palms

AVAILABLE FOR APPROPRIATION (a)		
15304 (15F)	Ordinance	\$ 11,251,064.61
15305 (15N)	Charter	\$ 7,295,480.05
008449	Tree Mitigation Project	\$ -
		<u>\$ 18,546,544.66</u>

The BIG 4

Title	Obligations	Funds Available
Level 2 Tree Planting Program (d)	\$ 2,231,535.35	\$ 3,315,474.95
Level 3 Tree Planting Program (d)	\$ 105,728.15	\$ 3,571,920.45
Remove/Replace (e)	\$ 1,329,936.05	\$ 220,340.89
630-CITY Tree Planting Program (e)	\$ 226,422.72	\$ 2,245,704.82

FY23 Revenues:	15304 (15F)	15305 (15N)
October	\$ 449,607.00	\$ 65,200.00
November	\$ 84,657.56	\$ 40,326.00
December	\$ 197,787.09	\$ 52,769.80
January	\$ 696,190.66	\$ 75,280.63
February	\$ 417,914.36	\$ 68,340.92
March	\$ 682,801.34	\$ 123,877.39
April	\$ 193,824.43	\$ 41,289.26
May	\$ 515,670.96	\$ 257,573.03
June	\$ 479,837.20	\$ 124,359.62
July	\$ 742,385.42	\$ 94,720.77
August	\$ 793,148.92	\$ 209,056.86
September	\$ 614,426.48	\$ 122,897.63

FY24 Revenues:	15304 (15F)	15305 (15N)
October	\$ 426,299.91	\$ 48,368.70
November	\$ 60,714.00	\$ 30,685.00
December	\$ 222,544.56	\$ 65,191.49
January	\$ 162,331.63	\$ 57,325.88
February	\$ 1,272,241.65	\$ 39,706.27
March	\$ 355,939.11	\$ 142,970.84
April	\$ 437,057.38	\$ 114,816.07
May	\$ 498,969.05	\$ 116,474.24
June	\$ 277,145.24	\$ 62,006.36

FY23 Expenses:	15304 (15F)	15305 (15N)
October	\$ 152,114.90	\$ -
November	\$ 466,468.35	\$ -
December	\$ 344,960.64	\$ -
January	\$ 491,890.84	\$ -
February	\$ 441,105.36	\$ -
March	\$ 211,444.66	\$ -
April	\$ 223,992.71	\$ -
May	\$ 278,167.84	\$ -
June	\$ 752,669.90	\$ -
July	\$ 335,550.47	\$ -
August	\$ 370,636.57	\$ -
September	\$ 944,396.64	\$ -

FY24 Expenses:	15304 (15F)	15305 (15N)
October	\$ 119,529.98	\$ -
November	\$ 392,524.81	\$ -
December	\$ 1,210,324.57	\$ -
January	\$ 568,415.76	\$ -
February	\$ 389,344.50	\$ -
March	\$ 502,833.85	\$ -
April	\$ 404,643.01	\$ -
May	\$ 428,409.97	\$ -
June	\$ 820,717.65	\$ -

	15304 (15F)	15305 (15N)
Funds Available (b)	\$ 9,516,763.55	\$ 2,500,000.00
Obligations (c)	\$ 4,142,958.51	\$ -

- (a) jaxtreemitigation.cj.net
- (b) total appropriated, but unobligated, funds
- (c) purchase order(s) have been issued for these funds
- (d) Tree Commission may make recommendations for these appropriations
- (e) Public Works utilizes these appropriations

Prepared 7/16/24 LD

The City of Jacksonville has two separate laws that provide protection for certain trees and require mitigation for damage or removal of certain trees caused by the process of land development. Mitigation is required either through planting or replanting of a calculated amount of mitigation trees or through making a specified payment into the Tree Protection and Related Expenses Trust Fund codified by Sec. 111.760, Ordinance Code. These laws are Article 25 of the Charter of the City of Jacksonville and Chapter 656, Part 12, Subparts A & B of the Ordinance Code. Each provision has specific criteria for what is characterized as a "protected tree" and thus would require replacing through the development process of a site, or if a replacement is not made, how the "mitigation fee" is calculated for removal of trees without replacement. The mitigation fee that is paid by developers who are unable to replace the trees destroyed during construction, as required by both provisions, is placed in the Tree Protection and Related Expenses Trust Fund. Moreover, funds received from application of the Charter are held in Fund 15305 and funds received from application of the Ordinance Code are held in the Fund 15304.