

THE NEW DUVAL COUNTY COURTHOUSE FACILITY



1902



1958



2011

**Courthouse Architectural Review Committee
(CARC) Presentation
May 21, 2009**



INTRODUCTION:

THE COURTHOUSE ARCHITECTURAL REVIEW COMMITTEE (CARC) AND ITS MEMBERSHIP WERE ESTABLISHED IN SECTION 5 OF ORDINANCE 2004-1339-E AND HAS BEEN CARRIED FORWARD IN THE COURTHOUSE LEGISLATION, 2007-401.

ON APRIL 22, 2008, CITY COUNCIL APPROVED ORDINANCE 2007-401 ALLOWING FOR THE CONTINUED DESIGN OF A UNIFIED (CRIMINAL AND CIVIL) COURTHOUSE FACILITY.

ON NOVEMBER 16, 2008, THE CARC COMMITTEE CONVENED TO REVIEW THE OPTIONS UNDER CONSIDERATION BY THE ADMINISTRATION AND APPROVED THE ADMINISTRATION'S RECOMMENDED OPTION TO BUILD ONE UNIFIED FACILITY ON THE EXISTING LAVILLA SITE.

ON DECEMBER 4, 2008 , THE TURNER/KBJ TEAM PRESENTED TO THE DOWNTOWN DEVELOPMENT REVIEW BOARD (DDRB) AND RECEIVED FINAL APPROVAL OF THE EXTERIOR DESIGN

PROJECT SUMMARY:

THE COURTHOUSE PROJECT IS A SEVEN STORY CONCRETE STRUCTURE THAT IS APPROXIMATELY 800,000 SQUARE FEET. THERE IS A TWO-STORY BASE THAT IS FORTY FEET HIGH, THE SEVEN-STORY TOWER IS 140 FEET HIGH AND THE PEDIMENT IS 188 FEET HIGH. THE FACADE MATERIALS ARE PRECAST CONCRETE AND GLASS.

THE BUILDING IS PROGRAMMED AND DESIGNED WITH 51 COURTROOMS WITH ASSOCIATED JUDICIAL SPACES AND COURT ADMINISTRATION, THE CLERK OF THE COURT FUNCTIONS AS WELL AS CORRECTIONS.

THE DESIGN OF THE COURTHOUSE IS BASED ON THE DAN L. WILEY ASSOCIATES, INC. PROGRAM RE-DEVELOPMENT REPORT DATED JULY 2005 FOR THE NEW DUVAL COUNTY COURTHOUSE. THE PROGRAM INCLUDES THE PROJECT PARAMETERS WHICH INCLUDE PROJECTED GROWTH THROUGH THE YEAR 2025.



PURPOSE:

THE COMMITTEE HAS THE RESPONSIBILITY FOR REVIEWING THE INTERIOR DESIGN TO ENSURE THE GOALS OF QUALITY, DURABILITY, SECURITY AND FUNCTIONALITY ARE ACHIEVED IN THE UNIFIED COURTHOUSE.

QUALITY:

LEED CERTIFIED, ADA COMPLIANT, SOUTH FACING DAYLIGHT AT MAIN PUBLIC CORRIDORS

DURABILITY:

SELECTION OF MATERIAL LIKE PORCELAIN TILE IN HIGH TRAFFIC AREAS FOR EASE OF MAINTENANCE AND IMPACT RESISTANCE - HIGH PERFORMANCE GLAZING

SECURITY:

THE GENERAL PUBLIC, THE JUDICIAL AND STAFF OCCUPANTS AND CORRECTIONS HOLDING AREAS ALL HAVE SEPARATE CIRCULATION THROUGHOUT THE BUILDING.

FUNCTIONALITY:

PUBLIC CIRCULATION IS VERY IMPORTANT FOR A COURTHOUSE TO BE FUNCTIONAL. APPROXIMATELY 70% OF ALL PUBLIC OCCUPANTS WILL ONLY VISIT THE FIRST TWO FLOORS WHICH ARE +/- 175,000 S.F. THE UPPER FLOORS ARE +/- 90,000 S.F. EACH AND ARE SERVED BY SIX LARGE PLATFORM ELEVATORS AND ESCALATORS TO QUICKLY MOVE OCCUPANTS BETWEEN LEVELS.

QUALITY:

THE MAIN ENTRANCE TO THE COURTHOUSE LEADS INTO THE 7 STORY ATRIUM WHICH CONNECTS ALL FLOORS AND PUBLIC CORRIDORS.

DURABILITY:

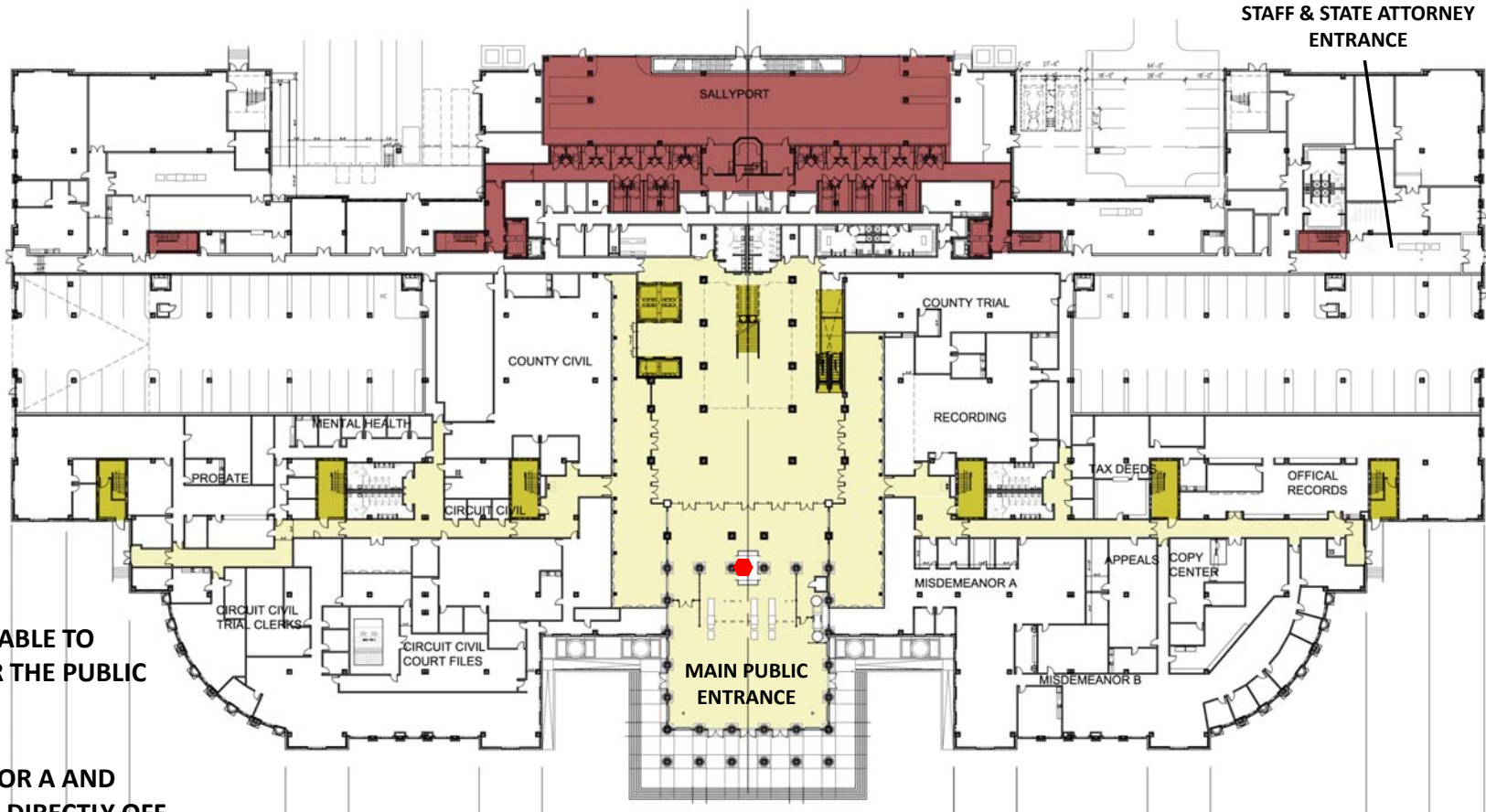
THE MATERIALS SELECTED ARE VERY DURABLE AND INTENDED FOR EASE OF MAINTENANCE.

SECURITY:

FOUR SECURITY LINES AVAILABLE TO QUICKLY SCREEN AND CLEAR THE PUBLIC

FUNCTIONALITY:

COUNTY CIVIL, MISDEMEANOR A AND RECORDING ARE ALL SPACES DIRECTLY OFF THE MAIN ATRIUM THAT HAVE HEAVY TRAFFIC.



FIRST FLOOR PLAN

FINISHES:

THE ATRIUM LOBBY WILL BE PORCELAIN TILE, THE WALLS HAVE A HIGH PORCELAIN TILE WAINSCOT WITH STAINED WOOD TRIM AND BASE. THE CEILINGS WILL BE COFFERED/ARTICULATED CEILING TILE AND GWB FURRING.

ATRIUM LOBBY & MAIN CORRIDORS:

QUALITY:

ALL PUBLIC CORRIDORS LEADING TO THE COURTROOMS ARE SOUTH FACING FULL GLAZING AND NATURAL DAYLIGHT.

DURABILITY:

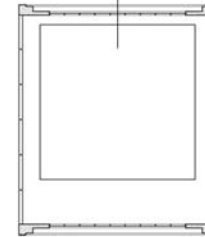
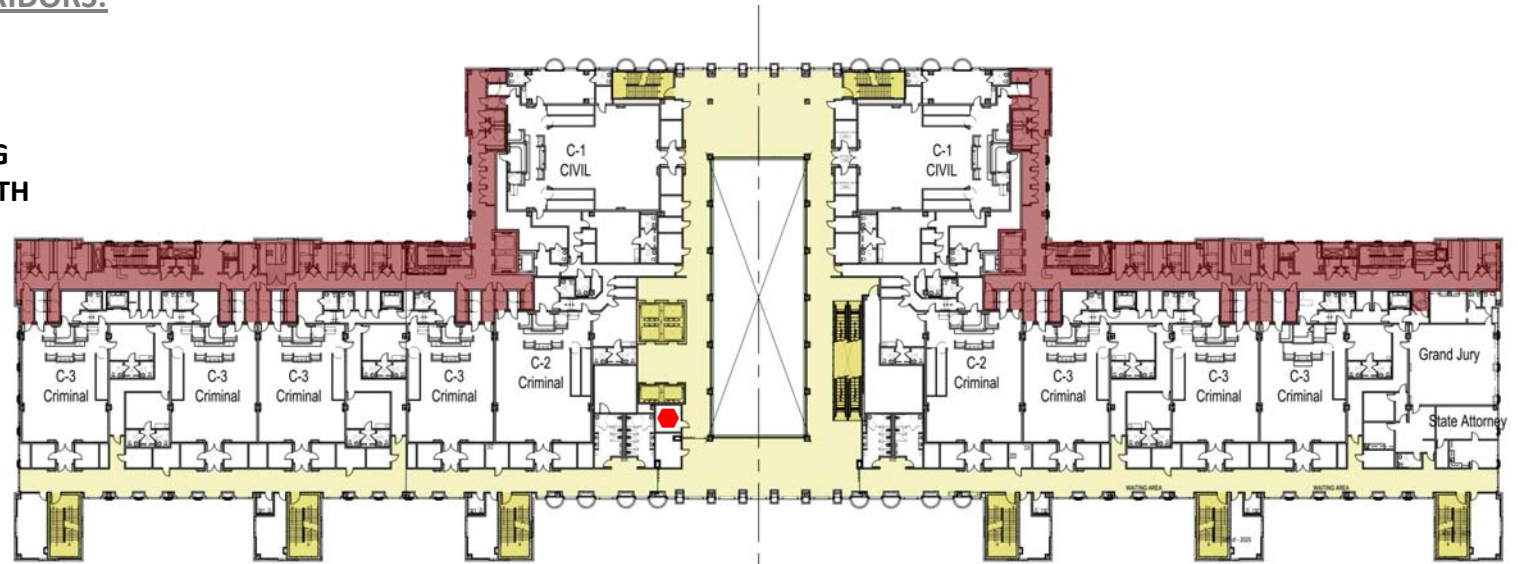
THE MATERIALS SELECTED ARE VERY DURABLE AND INTENDED FOR EASE OF MAINTENANCE.

SECURITY:

EACH FLOOR HAS A SECURITY OFFICE LOOKING OVER THE ATRIUM AREA. PUBLIC CORRIDORS ARE COMPLETELY SEPARATED FROM THE JUDICIAL/STAFF CIRCULATION

FUNCTIONALITY:

IN ADDITION TO THE EIGHT PUBLIC STAIRS, THERE ARE SIX ELEVATORS AND ONE ESCALATOR TO FACILITATE PUBLIC CIRCULATION ON THE UPPER FLOORS. ALL CORRIDORS ARE ORIENTED ABOUT THE CENTRAL ATRIUM COMPONENT.



FOURTH FLOOR PLAN

FINISHES:

THE ATRIUM LOBBY & MAIN CORRIDOR FLOORS WILL BE PORCELAIN TILE WITH POSSIBLE CARPET INSETS FOR ACOUSTICS, THE WALLS HAVE A HIGH PORCELAIN TILE WAINSCOT WITH STAINED WOOD TRIM AND BASE. THE CEILINGS WILL BE COFFERED TILES WITH GWB FURRING

COURTROOMS:

QUALITY:

TIMELESS AESTHIC OF QUALITY FINISHES

DURABILITY:

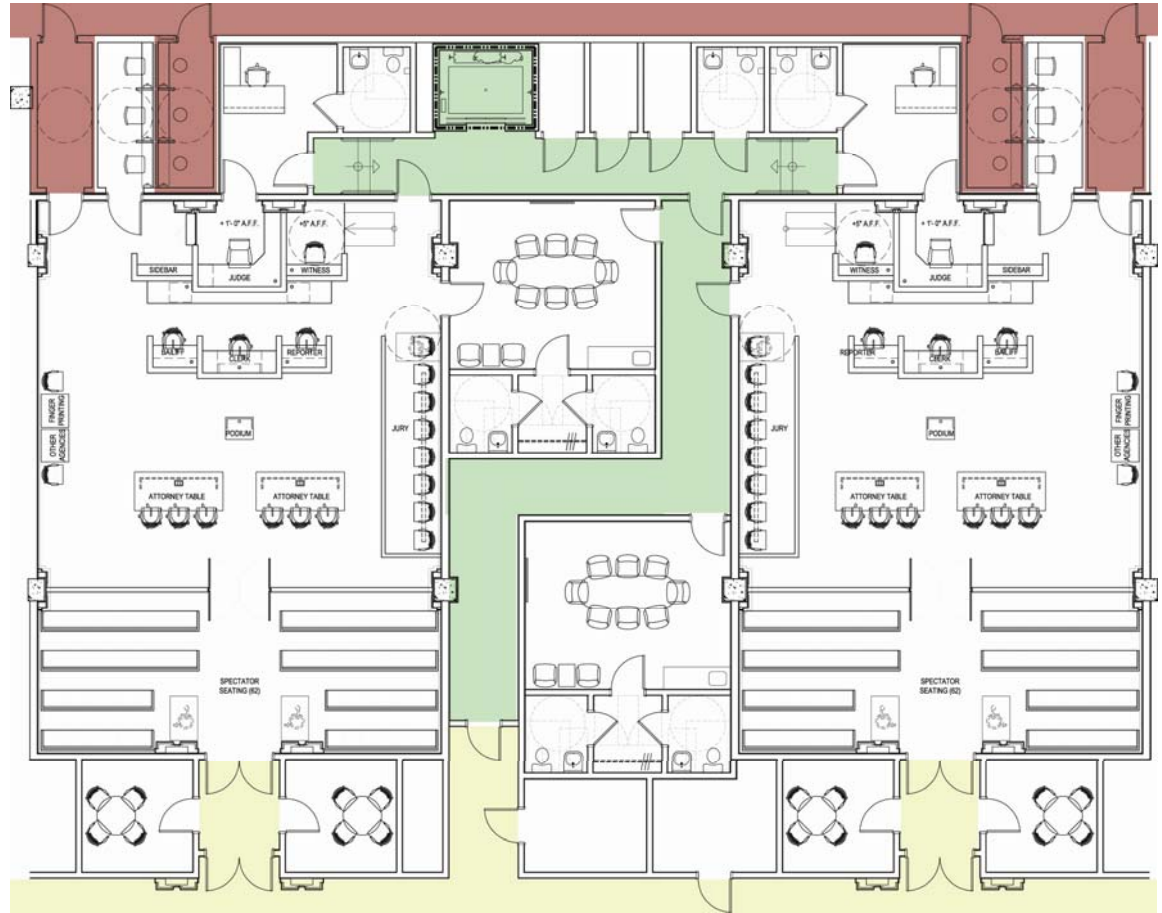
MILLWORK

SECURITY:

THE JUDICIAL BENCHES ARE ENCASED BY BULLET-PROOF MATERIALS AND EACH PROVIDES DIRECT ACCESS TO AND FROM THE COURTROOM FROM THE JUDGE/ATTORNEY MEETING ROOMS.

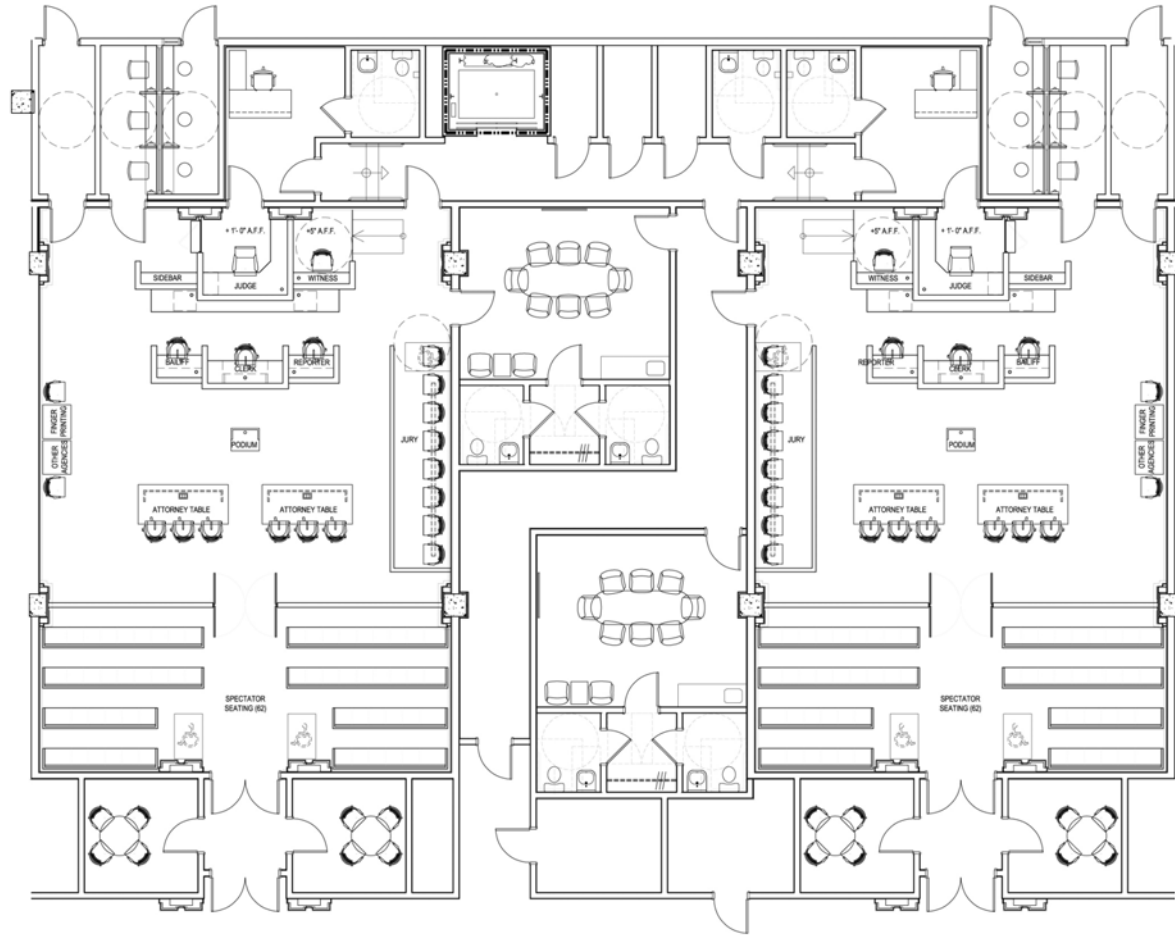
FUNCTIONALITY:

COURTROOM FUNCTIONALITY IS VERY IMPORTANT. THE DETENTION HOLDING IS DIRECTLY BEHIND AND JURY DELIBERATION ADJACENT TO EACH COURTROOM.





C-2 COURTROOM PERSPECTIVE



C-3 COURTROOM PAIR

COURTROOM FINISHES:

THE COURTROOM FLOORS ARE BROADLOOM CARPET WITH BORDERS. THE WALLS WITH HAVE A COMBINATION OF WOOD VENEER PANELS, PAINTED DRYWALL AND WALL COVERINGS. THE CEILINGS WILL BE COVERED IN WELL AREAS AND CEILING TILES FOR ACOUSTICS WITH PENDANT AND ACCENT LIGHTING FIXTURES.



DUVAL COUNTY COURTHOUSE



Jacksonville
Where Florida Begins.

Turner
copyright 2009