

## Pollution Rose VOC Corrected

Site: City of Jacksonville - City Odor Study

Report Issued: Jul 4, 2022 4:11 PM

Report Period: Jun 1, 2022 12:00 AM - Jul 1, 2022 12:00 AM

### AC 1 - eNose 1

Pollutant: VOC Corrected (ppb)

Average: 55.511 ppb

Minimum: 0.000 ppb

Maximum: 2999.092 ppb



## Pollution Rose VOC Corrected

Site: City of Jacksonville - City Odor Study

Report Issued: Jul 4, 2022 4:19 PM

Report Period: Jun 1, 2022 12:00 AM - Jul 1, 2022 12:00 AM

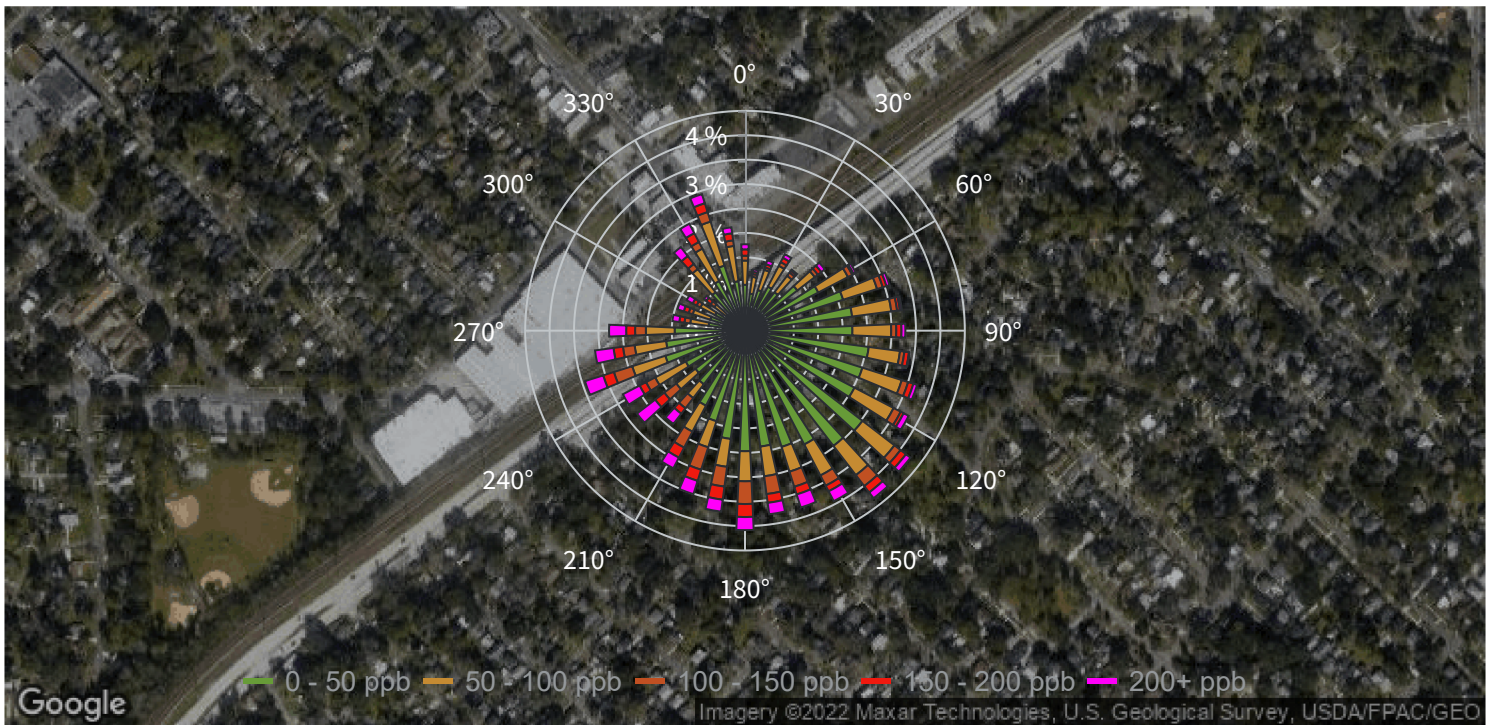
### AC 2 - eNose 2

Pollutant: VOC Corrected (ppb)

Average: 61.516 ppb

Minimum: 0.000 ppb

Maximum: 498.141 ppb

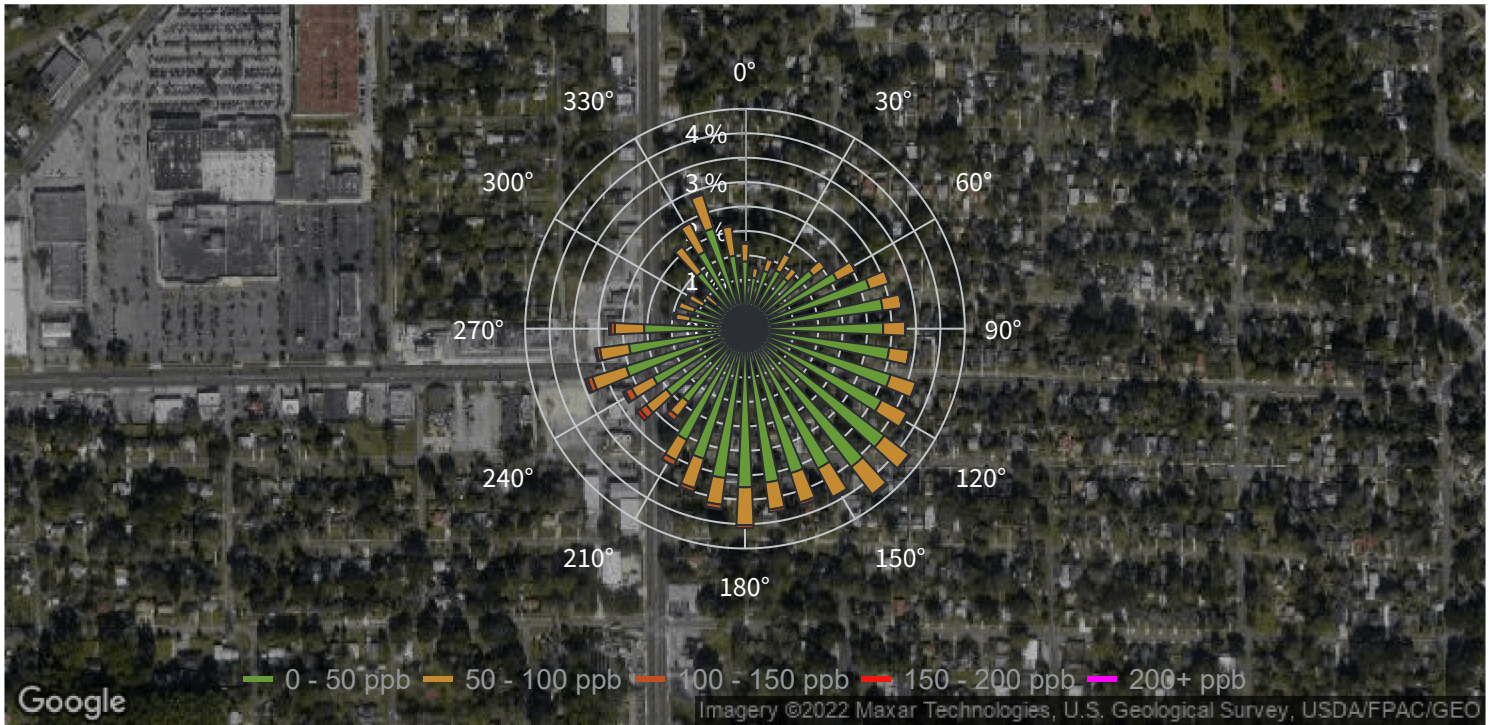


## Pollution Rose VOC Corrected

Site: City of Jacksonville - City Odor Study  
Report Issued: Jul 4, 2022 4:21 PM  
Report Period: Jun 1, 2022 12:00 AM - Jul 1, 2022 12:00 AM

### CM 1 - eNose 3

Pollutant: VOC Corrected (ppb)  
Average: 30.957 ppb  
Minimum: 0.000 ppb  
Maximum: 2533.155 ppb



## Pollution Rose VOC Corrected

Site: City of Jacksonville - City Odor Study

Report Issued: Jul 4, 2022 4:22 PM

Report Period: Jun 1, 2022 12:00 AM - Jul 1, 2022 12:00 AM

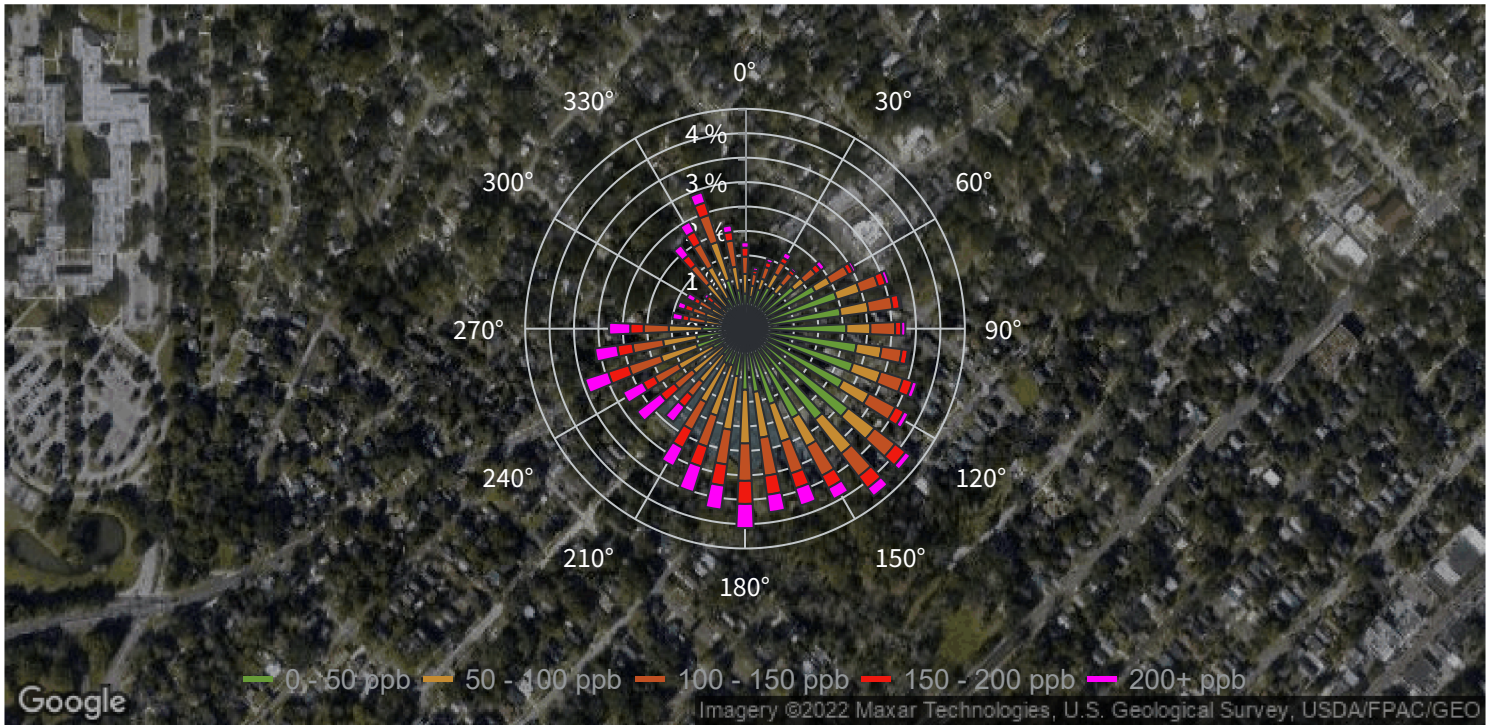
### CM 2 - eNose 4

Pollutant: VOC Corrected (ppb)

Average: 82.941 ppb

Minimum: 0.000 ppb

Maximum: 469.099 ppb

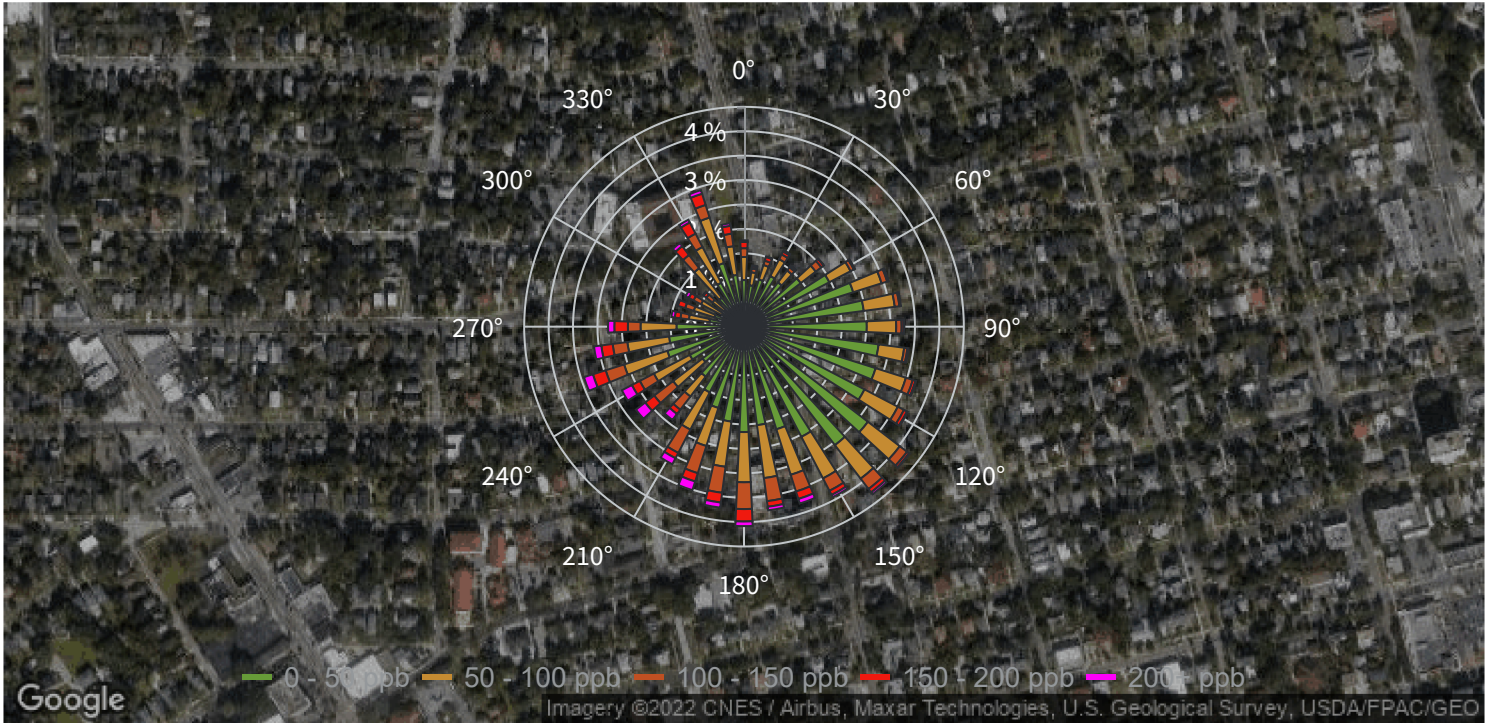


## Pollution Rose VOC Corrected

Site: City of Jacksonville - City Odor Study  
Report Issued: Jul 4, 2022 4:23 PM  
Report Period: Jun 1, 2022 12:00 AM - Jul 1, 2022 12:00 AM

### CM 3 - eNose 5

Pollutant: VOC Corrected (ppb)  
Average: 55.053 ppb  
Minimum: 0.000 ppb  
Maximum: 425.502 ppb

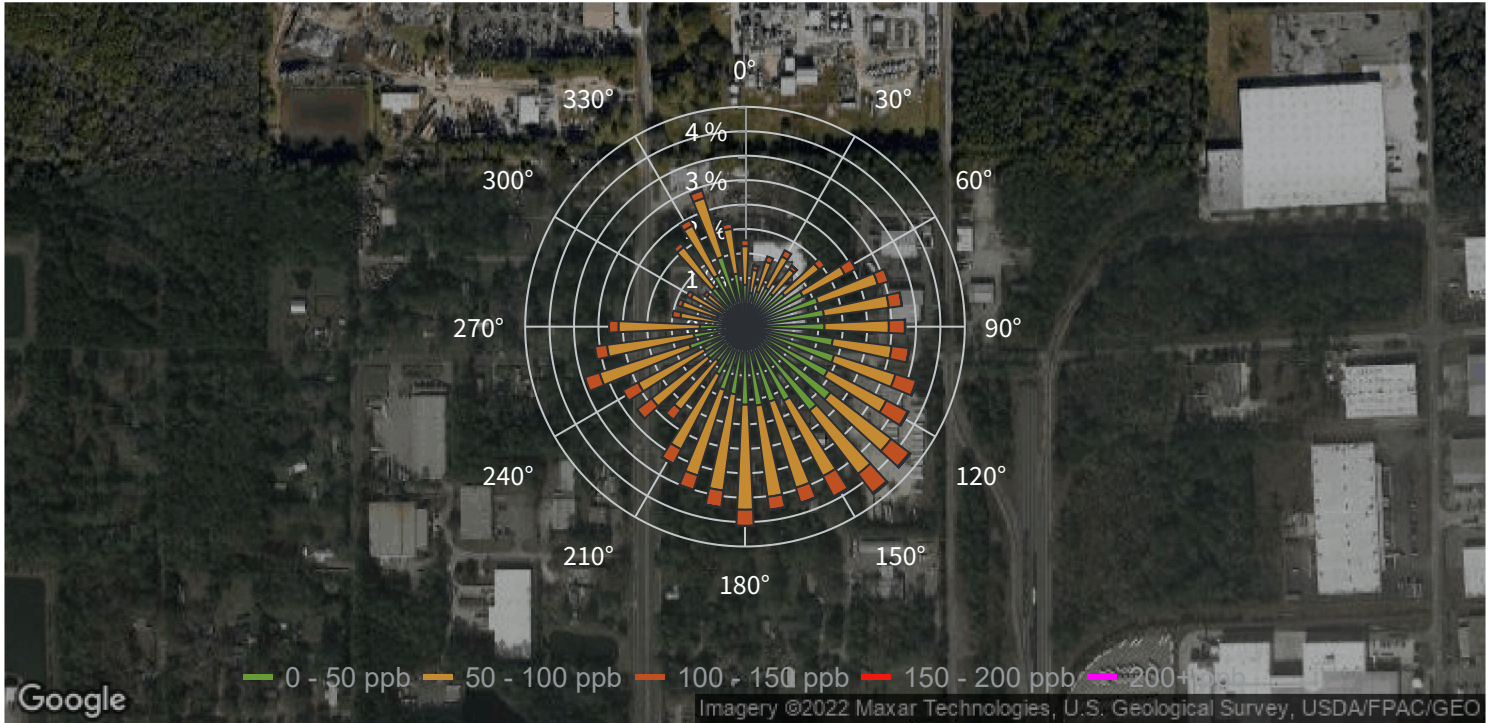


## Pollution Rose VOC Corrected

Site: City of Jacksonville - City Odor Study  
 Report Issued: Jul 4, 2022 4:24 PM  
 Report Period: Jun 1, 2022 12:00 AM - Jul 1, 2022 12:00 AM

### IFF 1 - eNose 6

Pollutant: VOC Corrected (ppb)  
 Average: 57.949 ppb  
 Minimum: 0.000 ppb  
 Maximum: 2841.868 ppb



## Pollution Rose VOC Corrected

Site: City of Jacksonville - City Odor Study

Report Issued: Jul 4, 2022 4:25 PM

Report Period: Jun 1, 2022 12:00 AM - Jul 1, 2022 12:00 AM

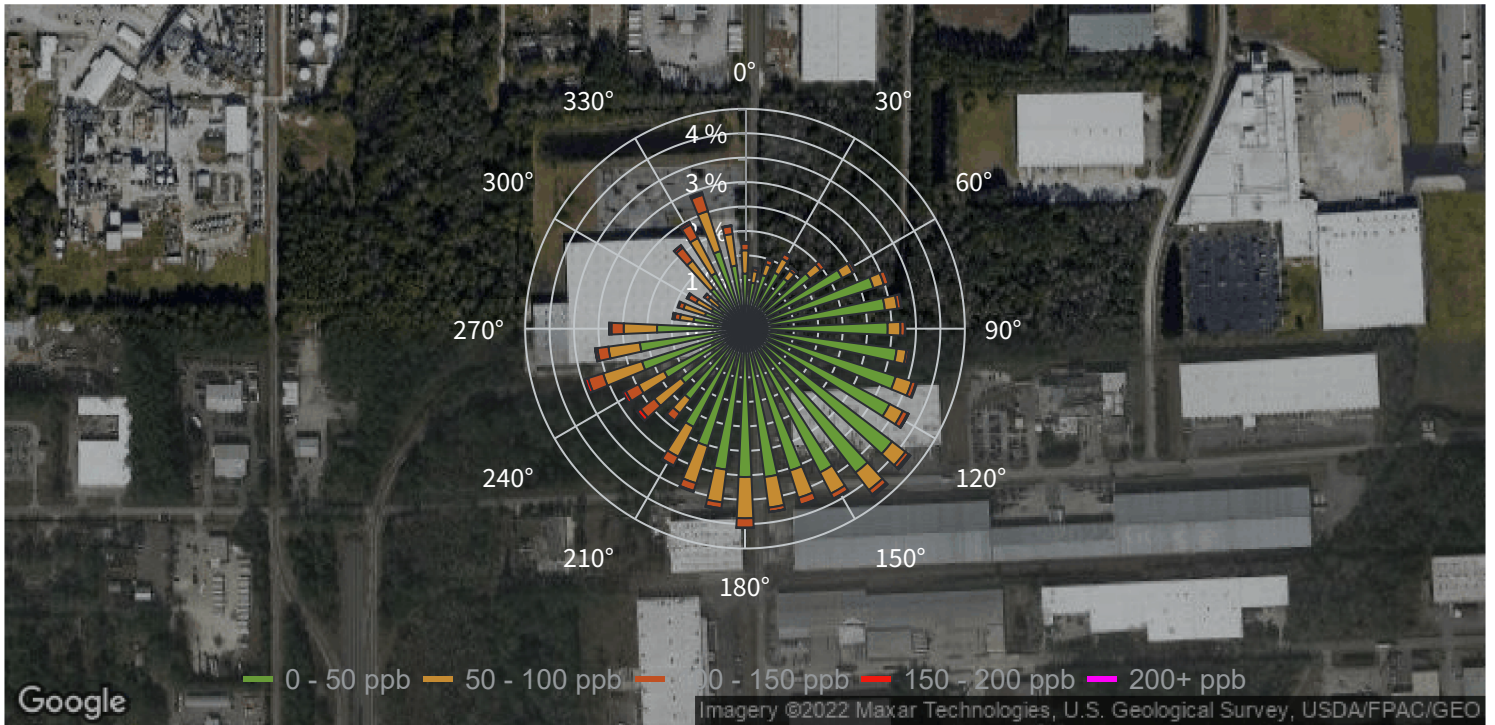
### IFF 2 - eNose 7

Pollutant: VOC Corrected (ppb)

Average: 36.783 ppb

Minimum: 0.000 ppb

Maximum: 547.880 ppb



## Pollution Rose VOC Corrected

Site: City of Jacksonville - City Odor Study

Report Issued: Jul 4, 2022 4:31 PM

Report Period: Jun 1, 2022 12:00 AM - Jul 1, 2022 12:00 AM

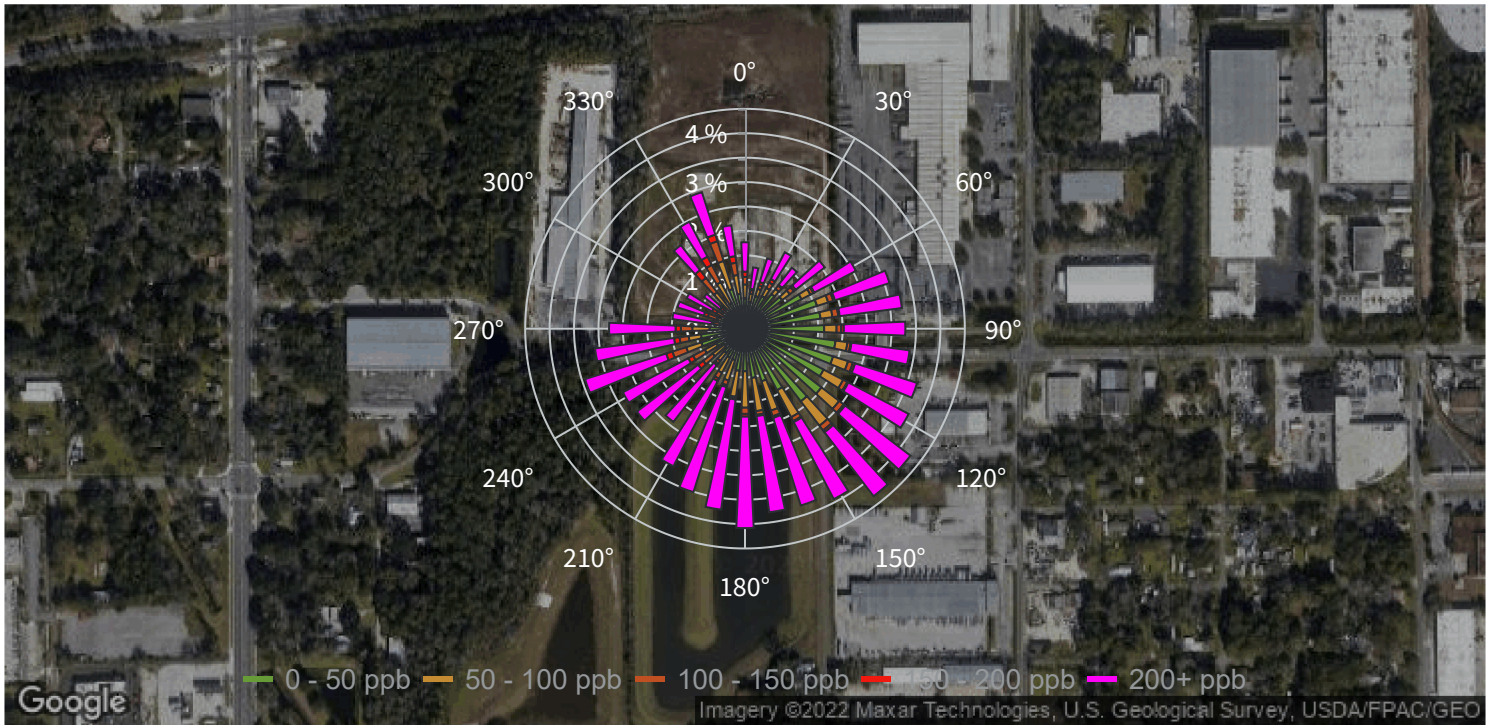
### RHD 1 - eNose 8

Pollutant: VOC Corrected (ppb)

Average: 177.032 ppb

Minimum: 0.000 ppb

Maximum: 3417.296 ppb





## Pollution Rose VOC Corrected

Site: City of Jacksonville - City Odor Study  
Report Issued: Jul 4, 2022 4:33 PM  
Report Period: Jun 1, 2022 12:00 AM - Jul 1, 2022 12:00 AM

### RHD 2 - eNose 9

Pollutant: VOC Corrected (ppb)  
Average: 33.512 ppb  
Minimum: 0.000 ppb  
Maximum: 1419.056 ppb



## Pollution Rose VOC Corrected

Site: City of Jacksonville - City Odor Study

Report Issued: Jul 4, 2022 4:34 PM

Report Period: Jun 1, 2022 12:00 AM - Jul 1, 2022 12:00 AM

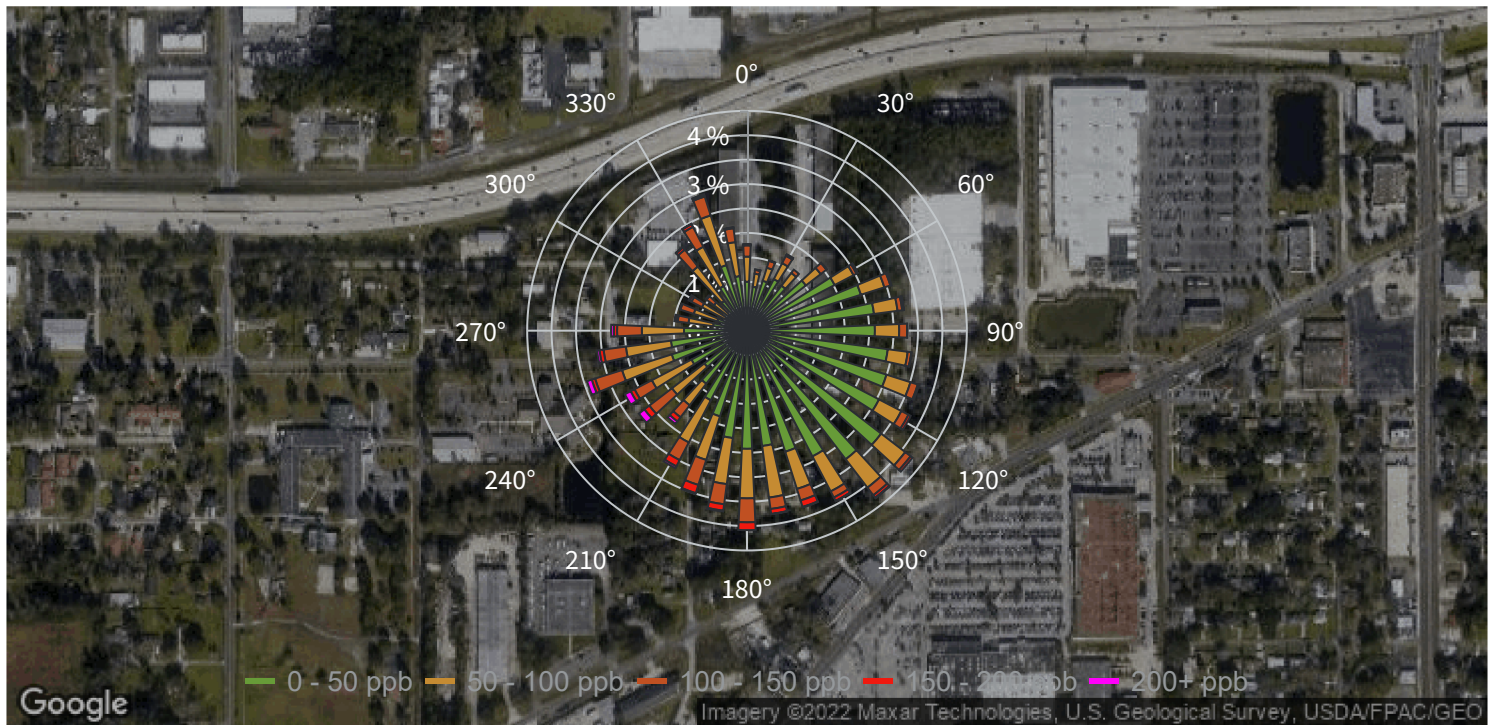
### RVL 1 - eNose 10

Pollutant: VOC Corrected (ppb)

Average: 47.434 ppb

Minimum: 0.000 ppb

Maximum: 264.770 ppb



## Pollution Rose VOC Corrected

Site: City of Jacksonville - City Odor Study

Report Issued: Jul 4, 2022 4:40 PM

Report Period: Jun 1, 2022 12:00 AM - Jul 1, 2022 12:00 AM

### RVL 2 - eNose 11

Pollutant: VOC Corrected (ppb)

Average: 50.904 ppb

Minimum: 0.000 ppb

Maximum: 1801.952 ppb

