

Pollution Rose VOC Corrected

Site: City of Jacksonville - City Odor Study

Report Issued: Aug 8, 2022 4:36 PM

Report Period: Jul 1, 2022 12:00 AM - Aug 1, 2022 12:00 AM

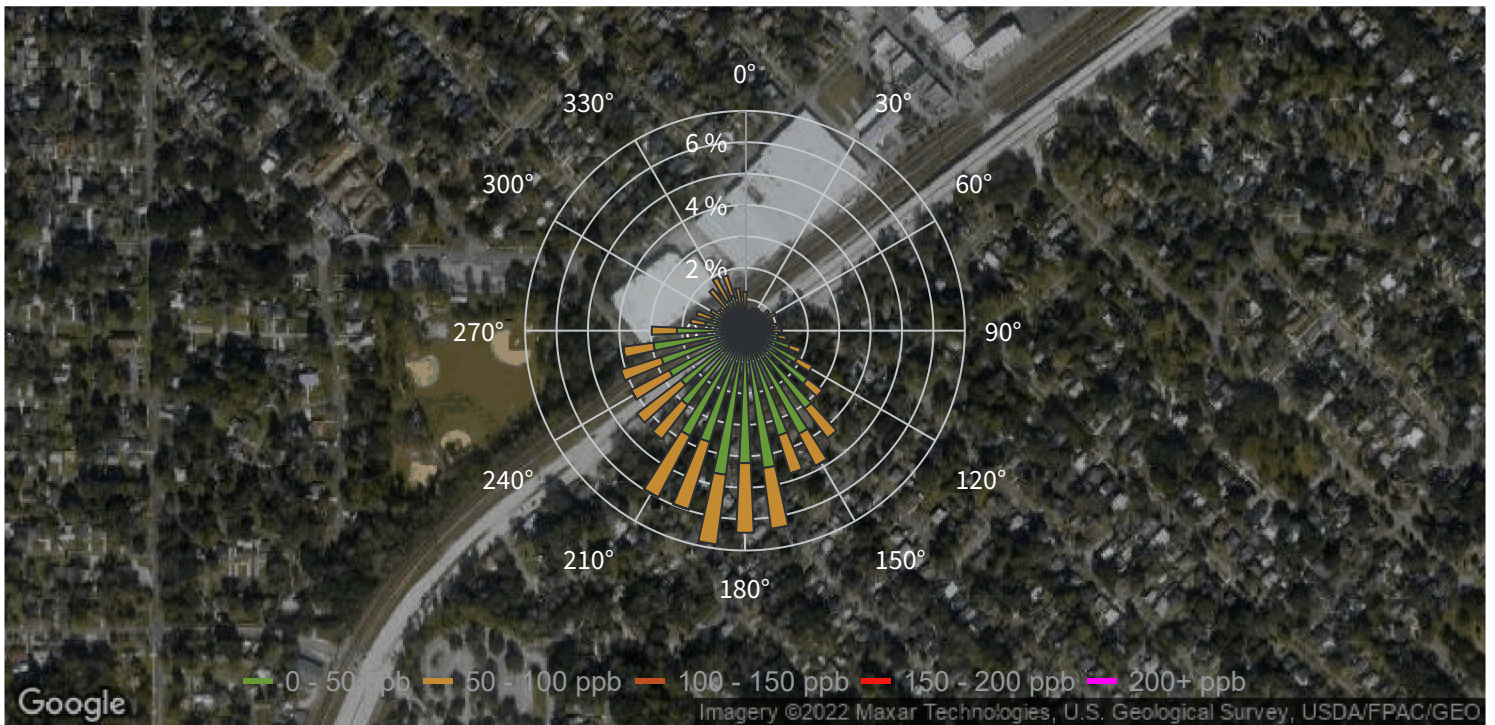
AC 1 - eNose 1

Pollutant: VOC Corrected (ppb)

Average: 36.813 ppb

Minimum: 0.000 ppb

Maximum: 393.268 ppb



Pollution Rose VOC Corrected

Site: City of Jacksonville - City Odor Study

Report Issued: Aug 8, 2022 4:42 PM

Report Period: Jul 1, 2022 12:00 AM - Aug 1, 2022 12:00 AM

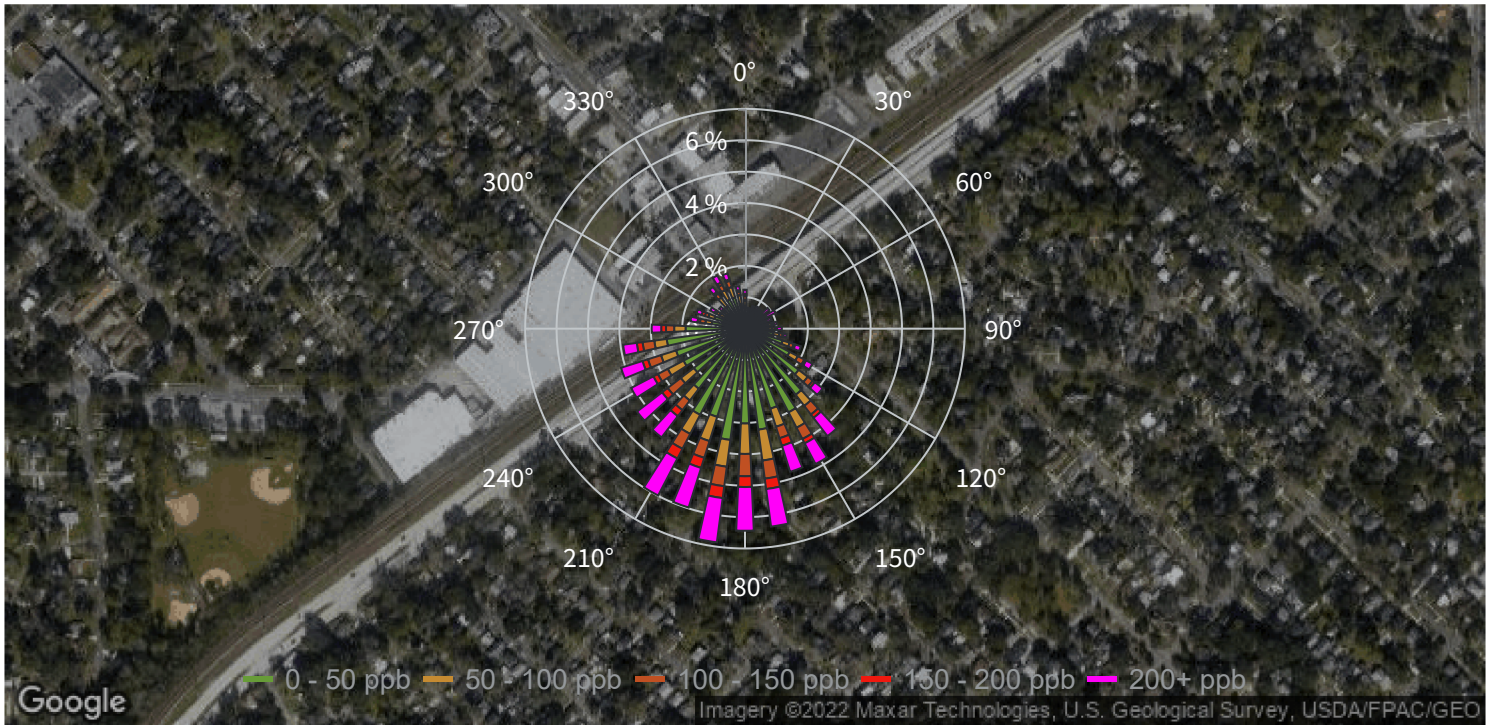
AC 2 - eNose 2

Pollutant: VOC Corrected (ppb)

Average: 92.445 ppb

Minimum: 0.000 ppb

Maximum: 465.842 ppb



Pollution Rose VOC Corrected

Site: City of Jacksonville - City Odor Study

Report Issued: Aug 8, 2022 4:46 PM

Report Period: Jul 1, 2022 12:00 AM - Aug 1, 2022 12:00 AM

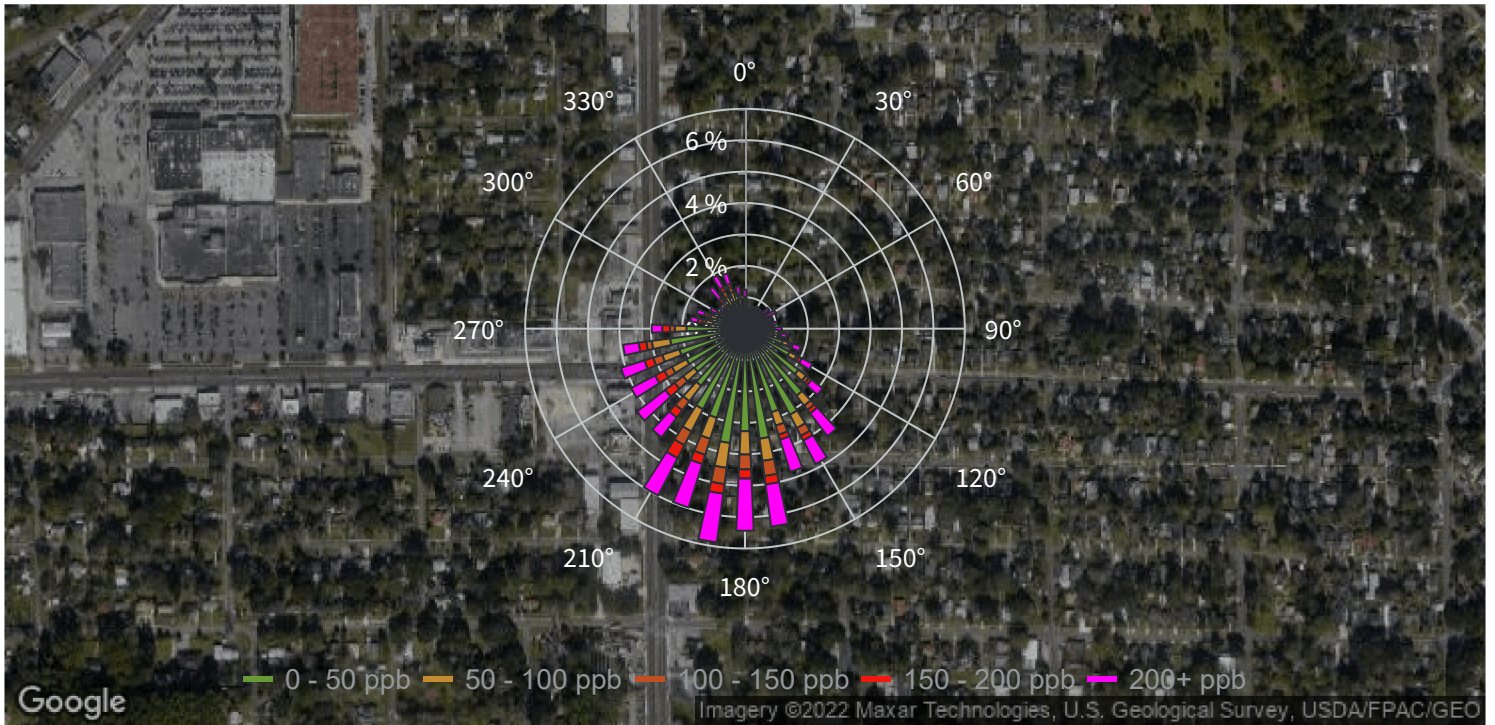
CM 1 - eNose 3

Pollutant: VOC Corrected (ppb)

Average: 102.715 ppb

Minimum: 0.000 ppb

Maximum: 648.175 ppb



Pollution Rose VOC Corrected

Site: City of Jacksonville - City Odor Study

Report Issued: Aug 8, 2022 4:47 PM

Report Period: Jul 1, 2022 12:00 AM - Aug 1, 2022 12:00 AM

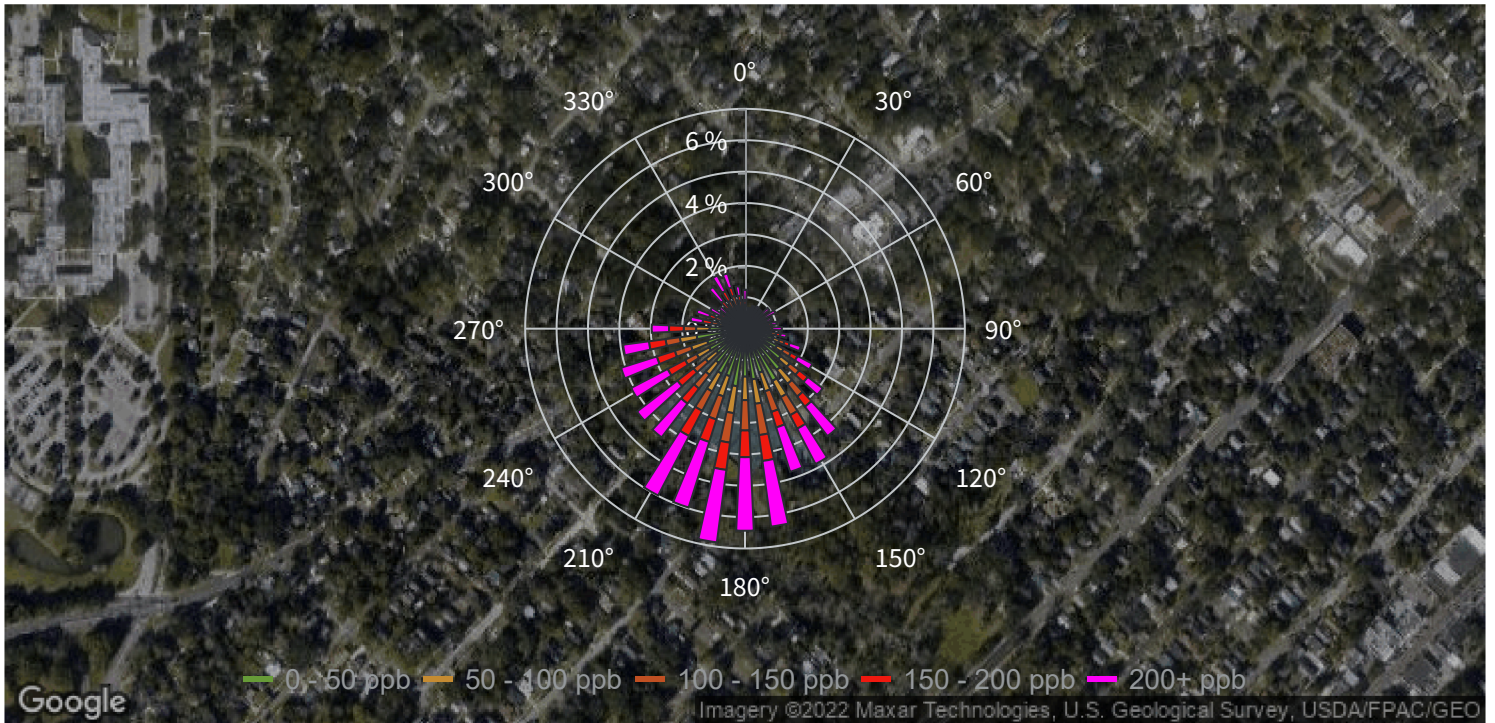
CM 2 - eNose 4

Pollutant: VOC Corrected (ppb)

Average: 141.011 ppb

Minimum: 0.000 ppb

Maximum: 497.542 ppb



Pollution Rose VOC Corrected

Site: City of Jacksonville - City Odor Study

Report Issued: Aug 8, 2022 4:49 PM

Report Period: Jul 1, 2022 12:00 AM - Aug 1, 2022 12:00 AM

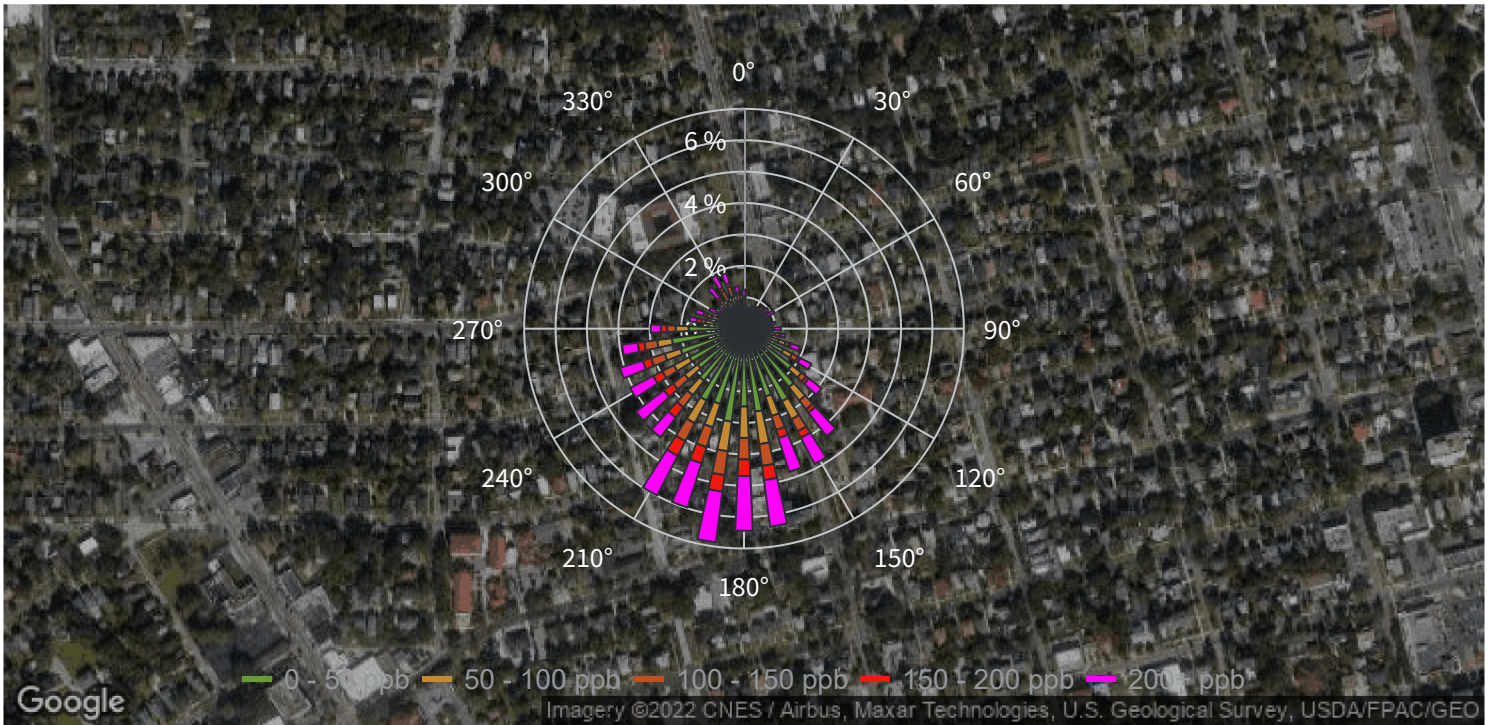
CM 3 - eNose 5

Pollutant: VOC Corrected (ppb)

Average: 109.505 ppb

Minimum: 0.000 ppb

Maximum: 3499.180 ppb



Pollution Rose VOC Corrected

Site: City of Jacksonville - City Odor Study

Report Issued: Aug 8, 2022 4:51 PM

Report Period: Jul 1, 2022 12:00 AM - Aug 1, 2022 12:00 AM

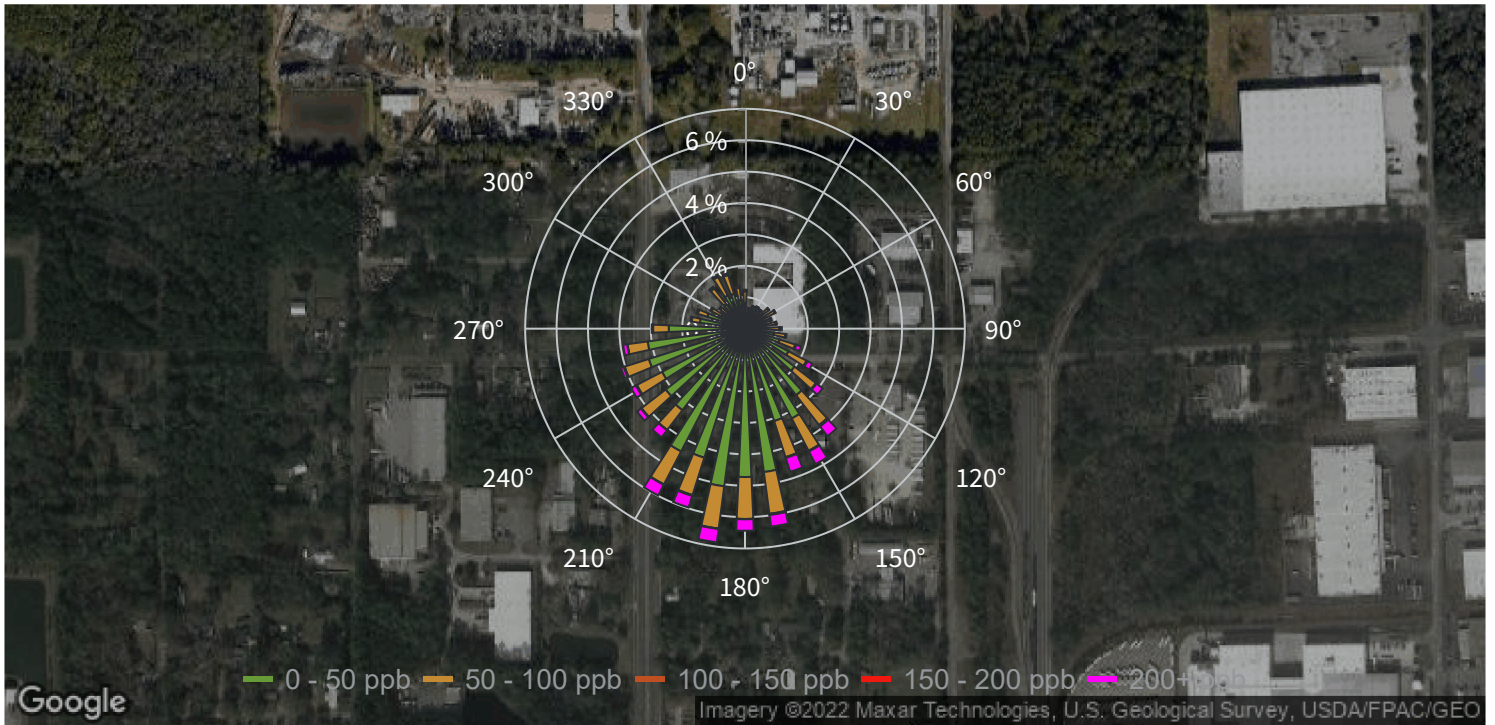
IFF 1 - eNose 6

Pollutant: VOC Corrected (ppb)

Average: 49.659 ppb

Minimum: 0.000 ppb

Maximum: 841.306 ppb

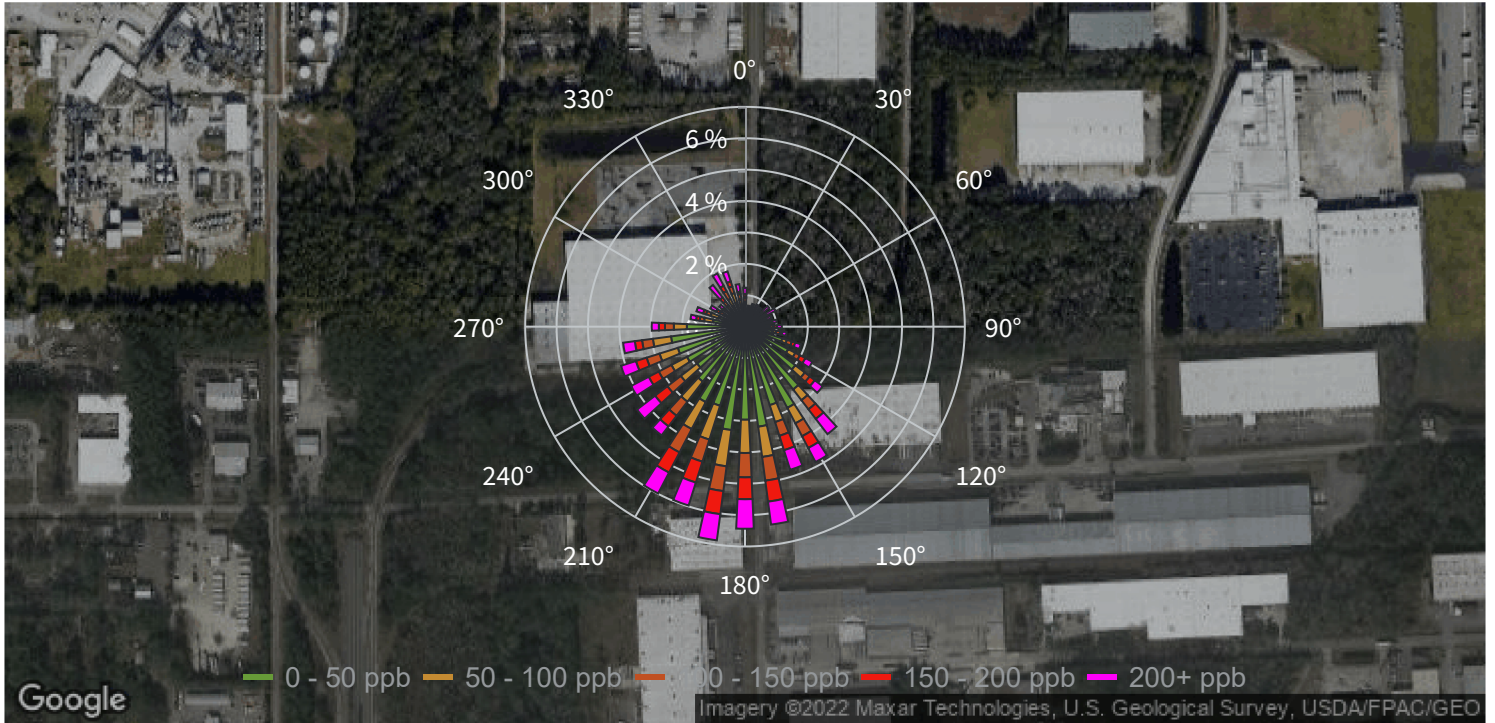


Pollution Rose VOC Corrected

Site: City of Jacksonville - City Odor Study
Report Issued: Aug 8, 2022 4:52 PM
Report Period: Jul 1, 2022 12:00 AM - Aug 1, 2022 12:00 AM

IFF 2 - eNose 7

Pollutant: VOC Corrected (ppb)
Average: 93.398 ppb
Minimum: 0.000 ppb
Maximum: 1062.488 ppb



Pollution Rose VOC Corrected

Site: City of Jacksonville - City Odor Study

Report Issued: Aug 8, 2022 4:54 PM

Report Period: Jul 1, 2022 12:00 AM - Aug 1, 2022 12:00 AM

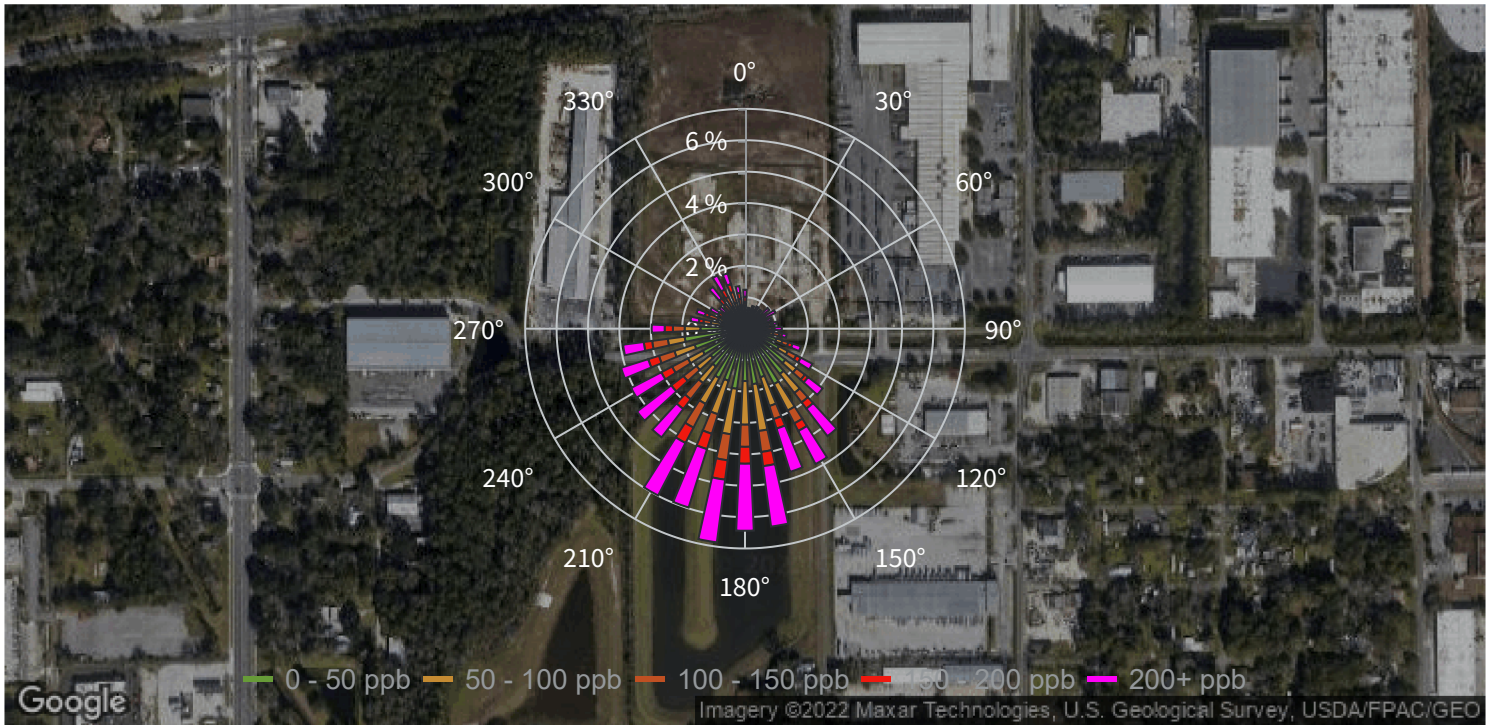
RHD 1 - eNose 8

Pollutant: VOC Corrected (ppb)

Average: 128.544 ppb

Minimum: 0.000 ppb

Maximum: 1721.158 ppb



Pollution Rose VOC Corrected

Site: City of Jacksonville - City Odor Study
Report Issued: Aug 8, 2022 4:55 PM
Report Period: Jul 1, 2022 12:00 AM - Aug 1, 2022 12:00 AM

RHD 2 - eNose 9

Pollutant: VOC Corrected (ppb)
Average: 59.580 ppb
Minimum: 0.000 ppb
Maximum: 1099.776 ppb



Pollution Rose VOC Corrected

Site: City of Jacksonville - City Odor Study

Report Issued: Aug 8, 2022 4:57 PM

Report Period: Jul 1, 2022 12:00 AM - Aug 1, 2022 12:00 AM

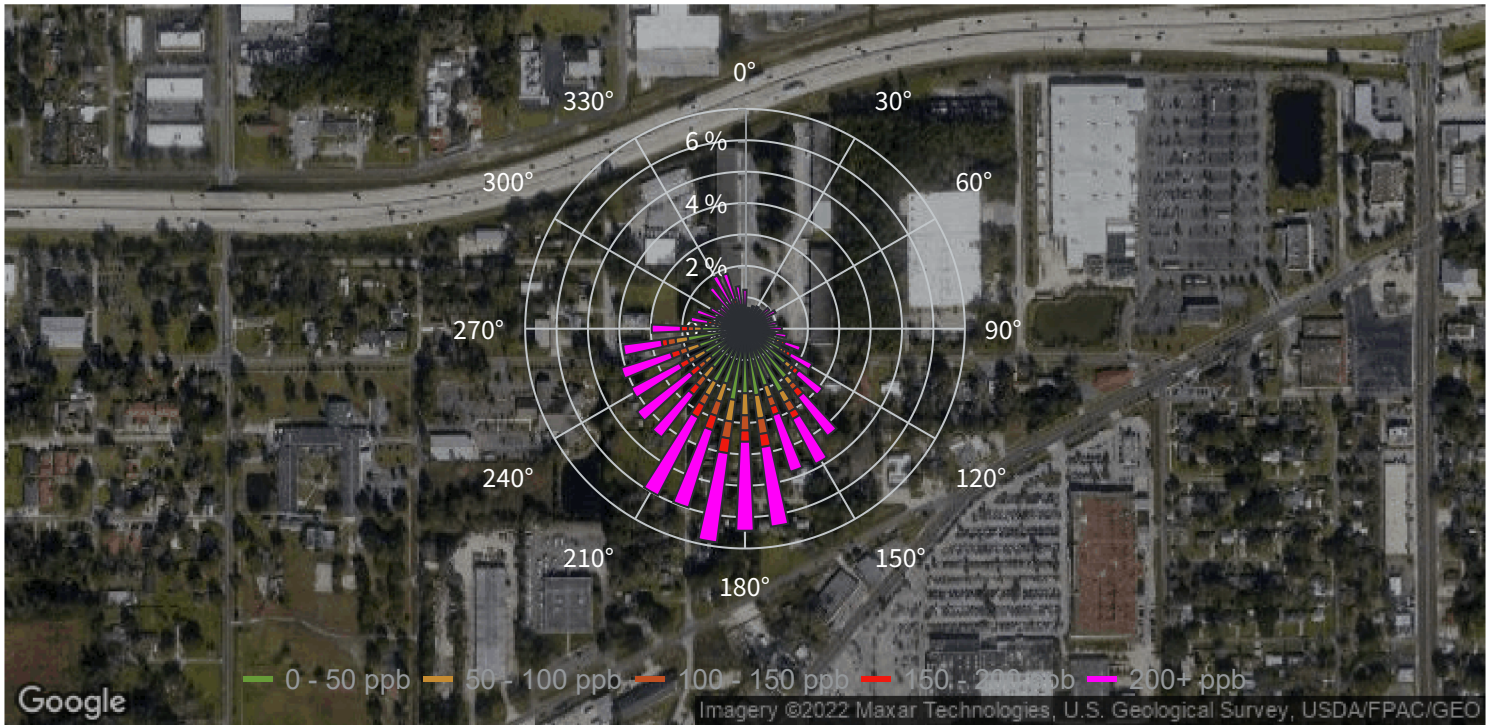
RVL 1 - eNose 10

Pollutant: VOC Corrected (ppb)

Average: 220.023 ppb

Minimum: 0.000 ppb

Maximum: 893.875 ppb



Pollution Rose VOC Corrected

Site: City of Jacksonville - City Odor Study

Report Issued: Aug 8, 2022 4:57 PM

Report Period: Jul 1, 2022 12:00 AM - Aug 1, 2022 12:00 AM

RVL 2 - eNose 11

Pollutant: VOC Corrected (ppb)

Average: 81.147 ppb

Minimum: 0.000 ppb

Maximum: 1178.095 ppb

