

*July 16, 2010*

# Recent efforts to improve the water quality of Lower St. Johns River tributaries



**Cheryl M. Wapnick**



- 1. Use of Indicator Organisms for TMDLs**
- 2. Current Local Source Identification Efforts**
  - A. GIS and Technical Reports**
  - B. Detailed Assessment of Fecal Coliform Sources**
- 3. Science and Engineering**

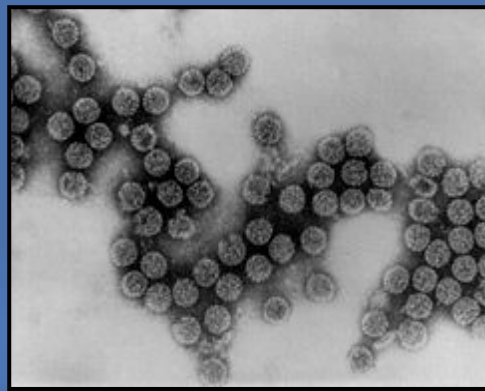


# Indicator Organisms (IOs)

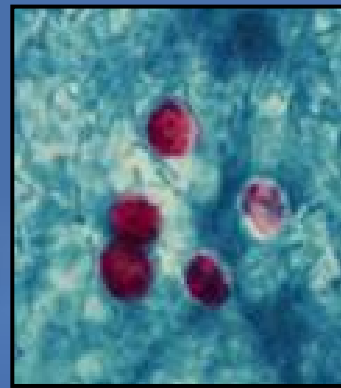
- Bacteria present in the GI tract of warm-blooded animals
- Used to identify fecal contamination
- Not pathogenic
- In theory, predictive of human pathogens



Bacterial  
Pathogens



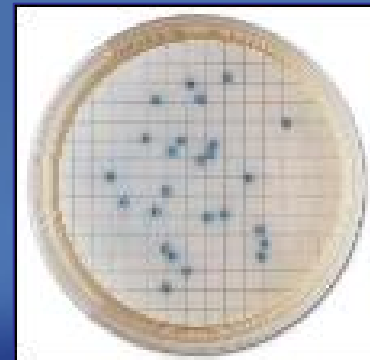
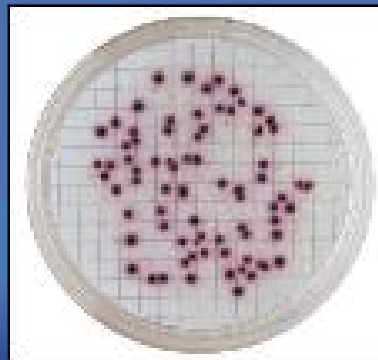
Viral  
Pathogens



Protozoan  
Pathogens

# Currently Recognized IOs

- Fecal coliforms – thermotolerant coliforms of fecal origin
- *Escherichia coli* – the dominant fecal coliform species
- Enterococci – also of fecal origin; more salt-tolerant than fecal coliforms



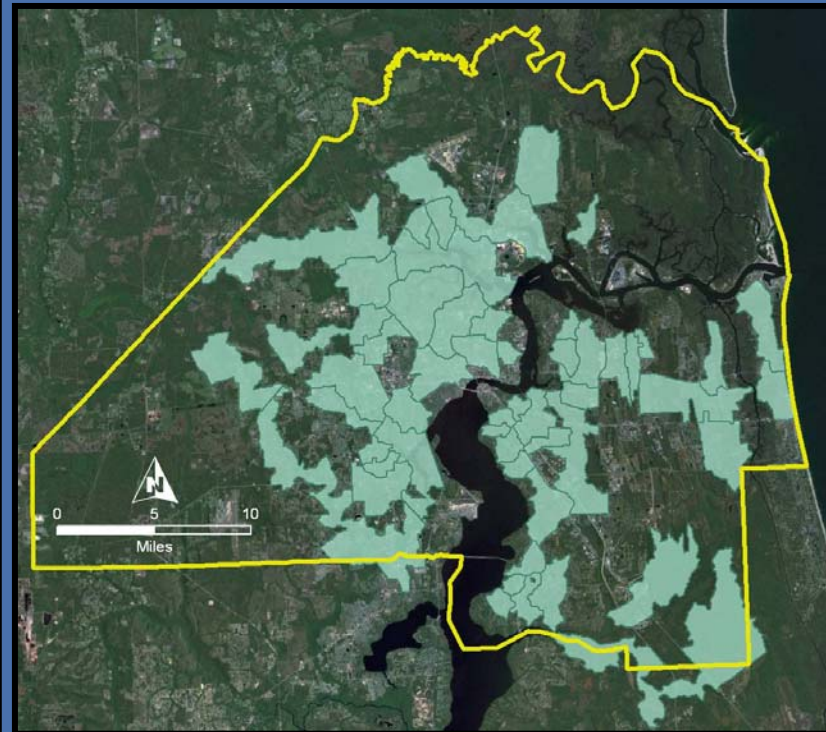
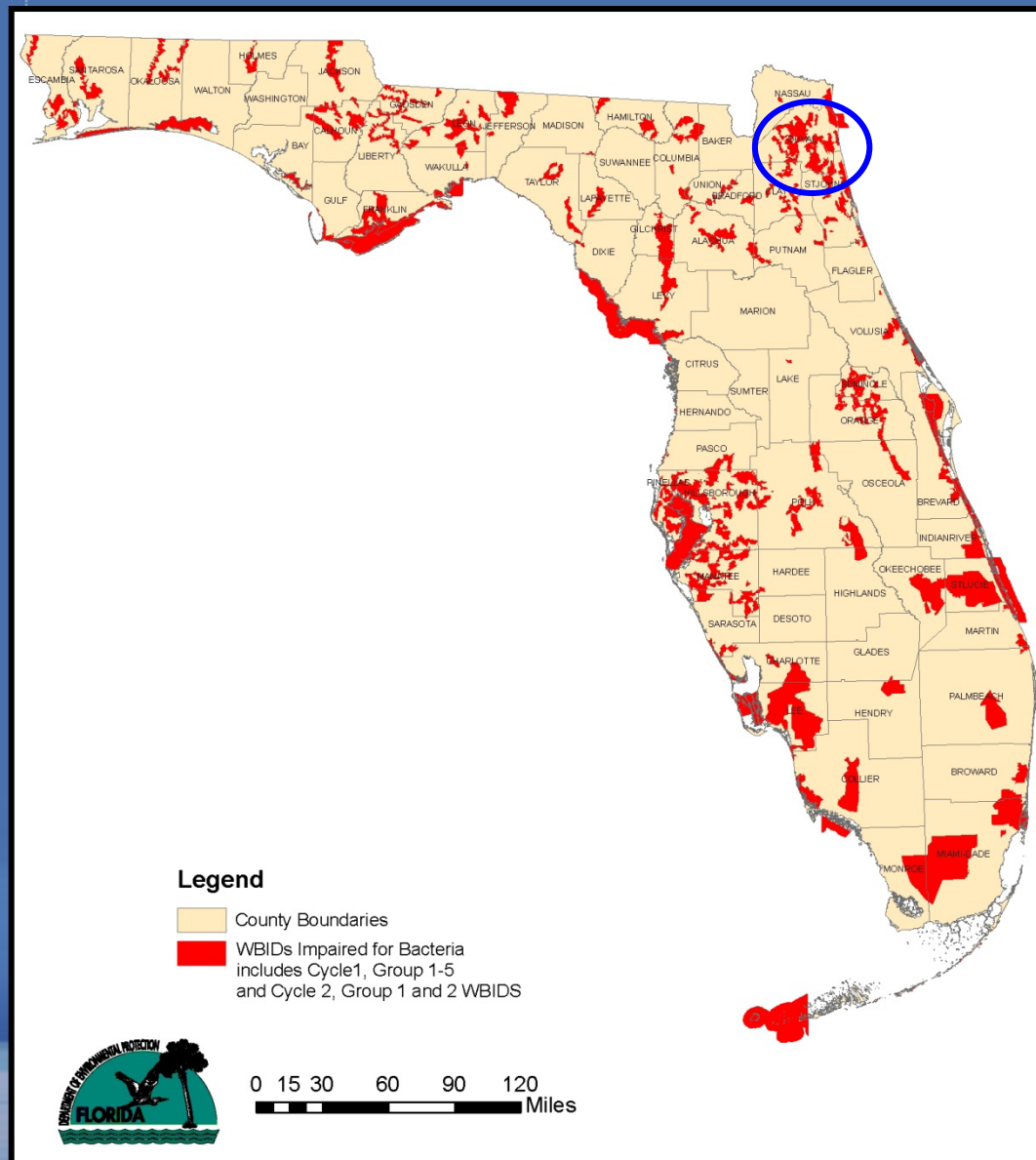
Fecal coliforms

*E. coli*

enterococci



# Waterbodies Impaired for Fecal Coliforms



559 WBIDs impaired in Florida

75 WBIDs impaired in Jacksonville

# Possible Sources of IOs

- Aging sanitary sewer infrastructure
- Onsite wastewater disposal systems (septic)
- Surface runoff
- Agriculture
- Wild animals
- Soil/sediments





# **GIS and Technical Reports**



# GIS and Technical Reports

- One each for **53** impaired WBIDs
- Interprets **existing information** used to create a set of maps
- **Documents management actions** compiled by local stakeholders as of June 7, 2007
  - Includes evaluation of “sufficiency of effort”
- **Suggests additional management actions** to improve water quality and help protect human health

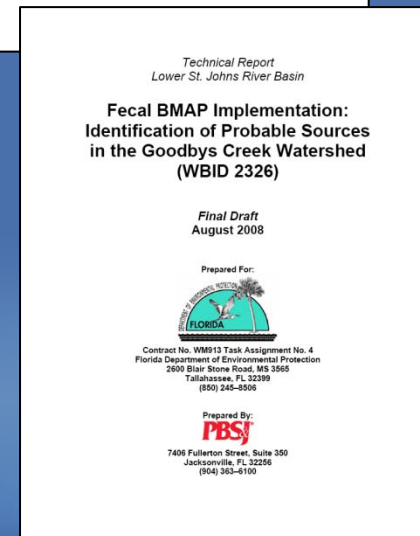
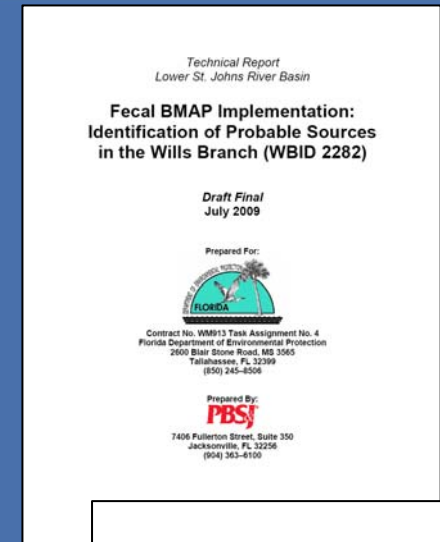
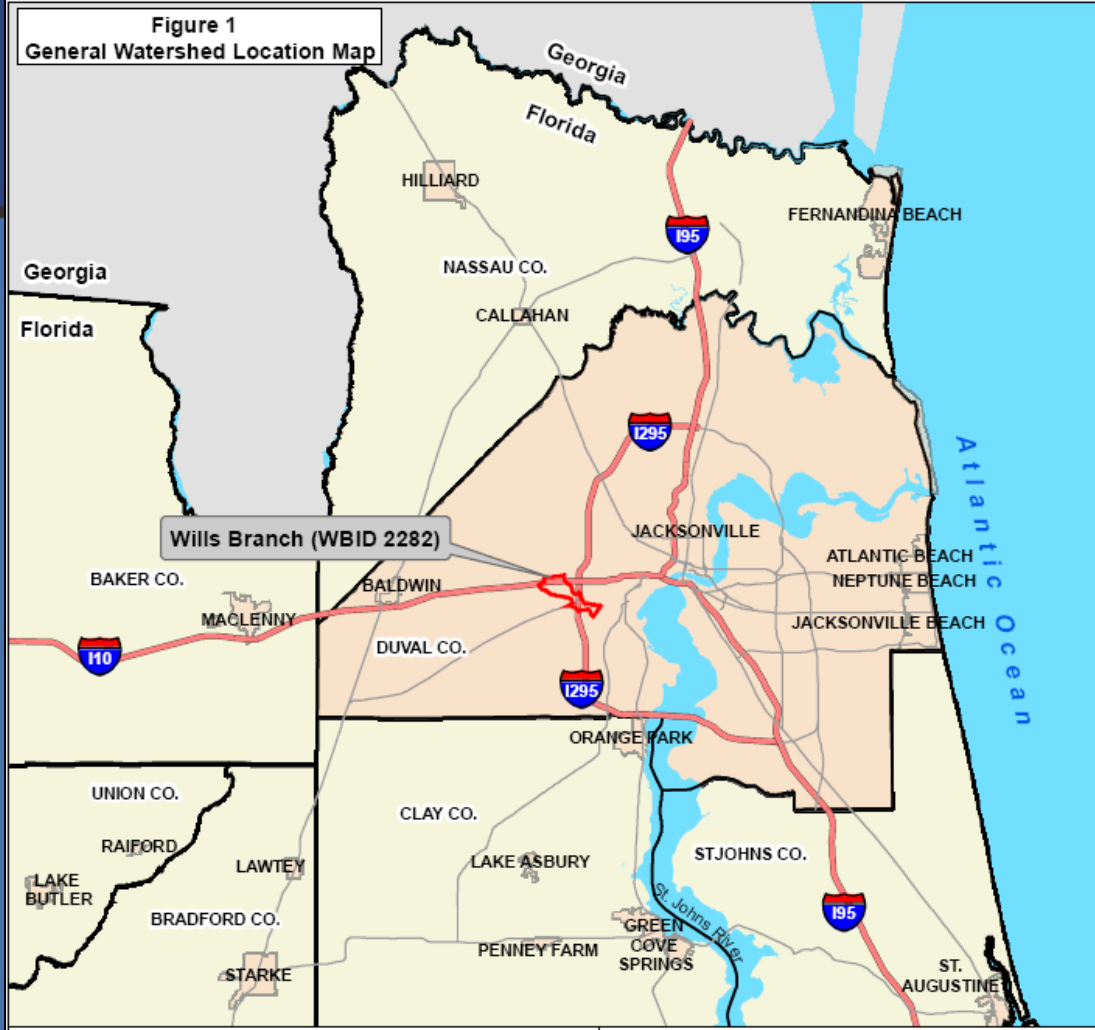









Figure 1  
General Watershed Location Map



Wills Branch (WBID 2282)

**Legend**

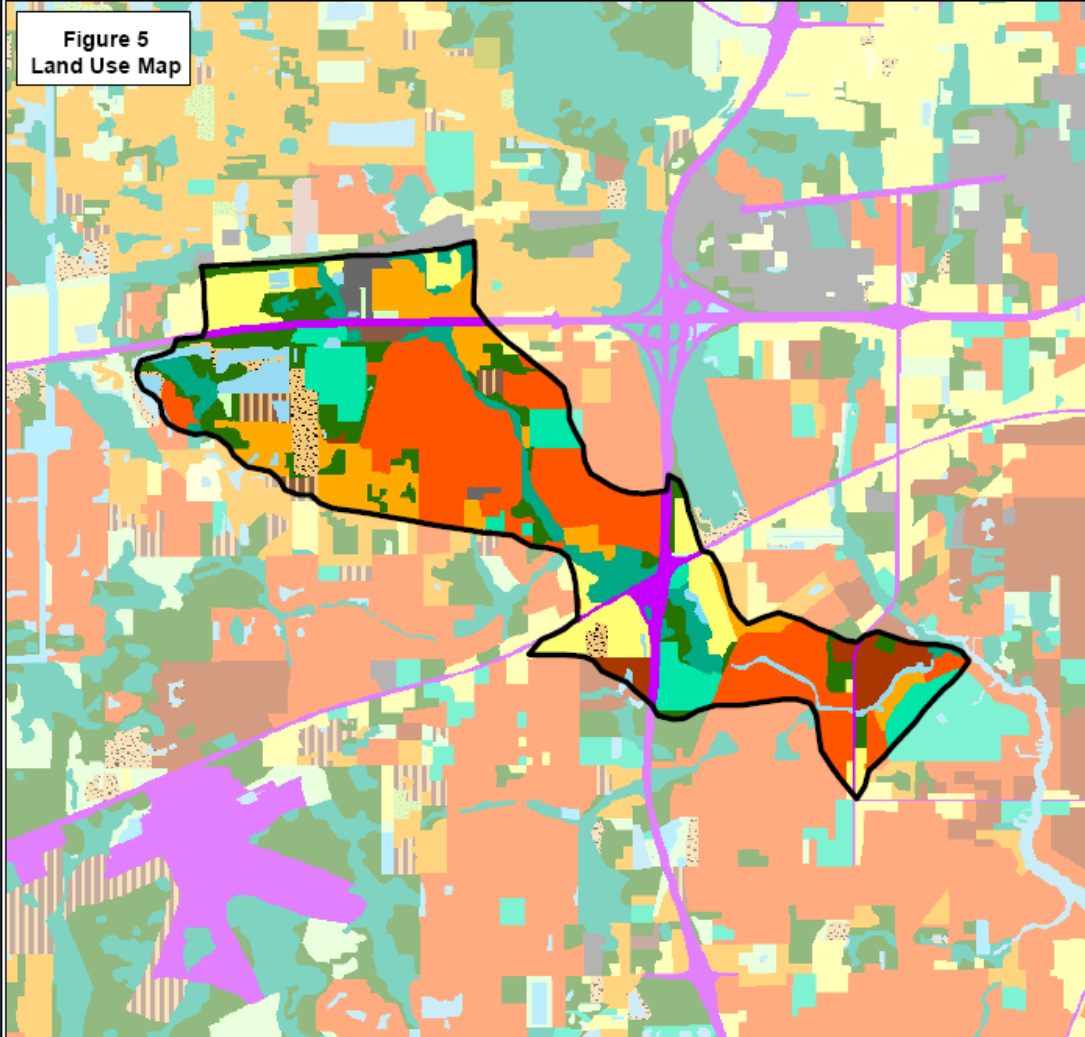
-  Wills Branch (WBID 2282)
-  Watershed Boundary
-  Water Body
-  Interstate
-  Major Road
-  City Limits
-  County Boundary




**Overview**







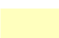
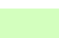














Figure 5  
Land Use Map



**Legend**

 Wills Branch Watershed (WBID 2282)

**Land Use**

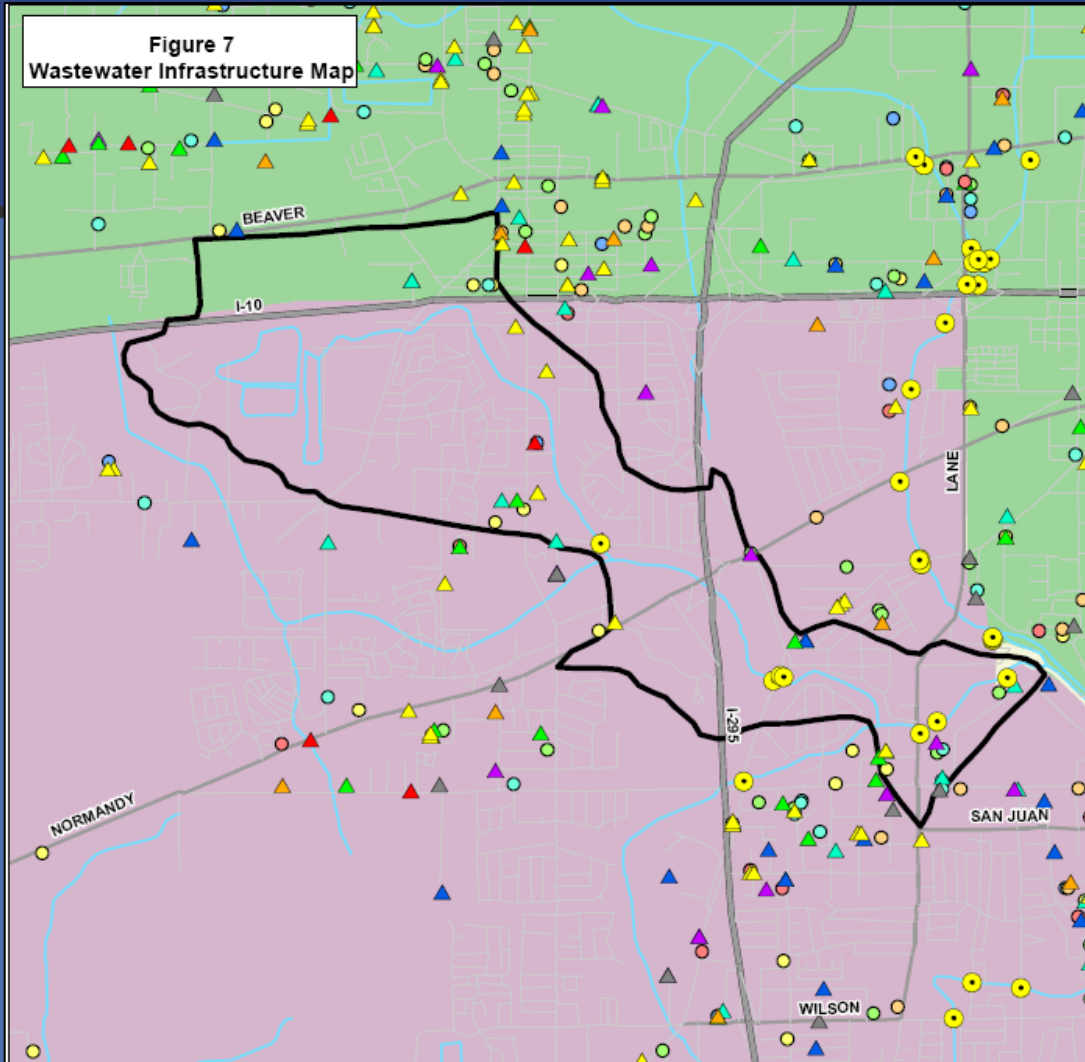
- |  |  |   |
|--|--|---|
|  Low Density Residential            |  Recreational             |  Open Land - Agriculture |
|  Medium Density Residential         |  Open Land                |  Non-Forested Upland     |
|  High Density Residential           |  Cropland and Pastureland |  Upland Forest           |
|  Commercial/ Utility/ Institutional |  Silviculture             |  Water                   |
|  Industrial                         |  Feeding Operation        |  Wetlands                |
|  Extractive                         |  Nurseries and Vineyards  |  Disturbed Land          |
|  |  Specialty Farms          |  Transportation          |

0 0.2 0.4 0.8 Miles





**Figure 7**  
Wastewater Infrastructure Map



**Legend**

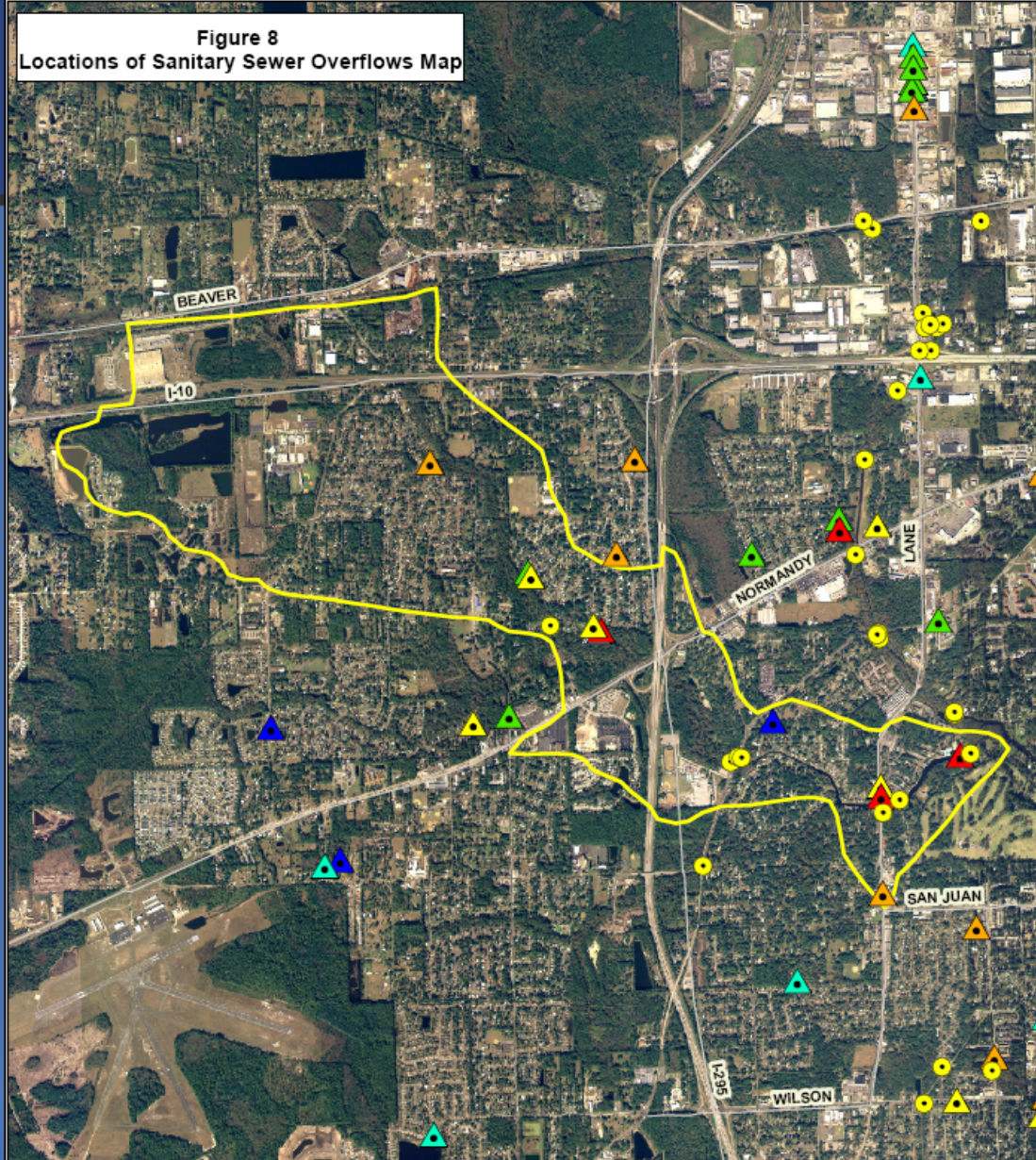
Wills Branch (WBID 2282) Watershed  
 Water Body      Road  
 IWR Fecal Coliform Sample Site  
**Wastewater Treatment Facility Service Area**  
 Buckman      No WWTF Service Area  
 Southwest

**Septic Tank Repair Permit Application**





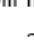
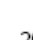


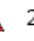
1990	1995	1999	2003
1992	1996	2000	2004
1993	1997	2001	2005
1994	1998	2002	2006

0 0.25 0.5 1 Miles

**Figure 8**  
**Locations of Sanitary Sewer Overflows Map**



**Legend**

 Wills Branch (WBID 2282) Watershed	<b>Location of Wastewater Spill Incident</b>			
 IWR Fecal Coliform Sample Site	 2001	 2003	 2005	 2007
	 2002	 2004	 2006	

0 0.2 0.4 0.8 1.2 Miles

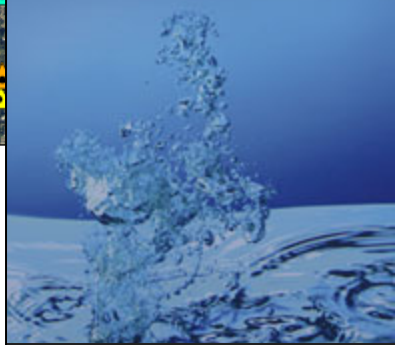
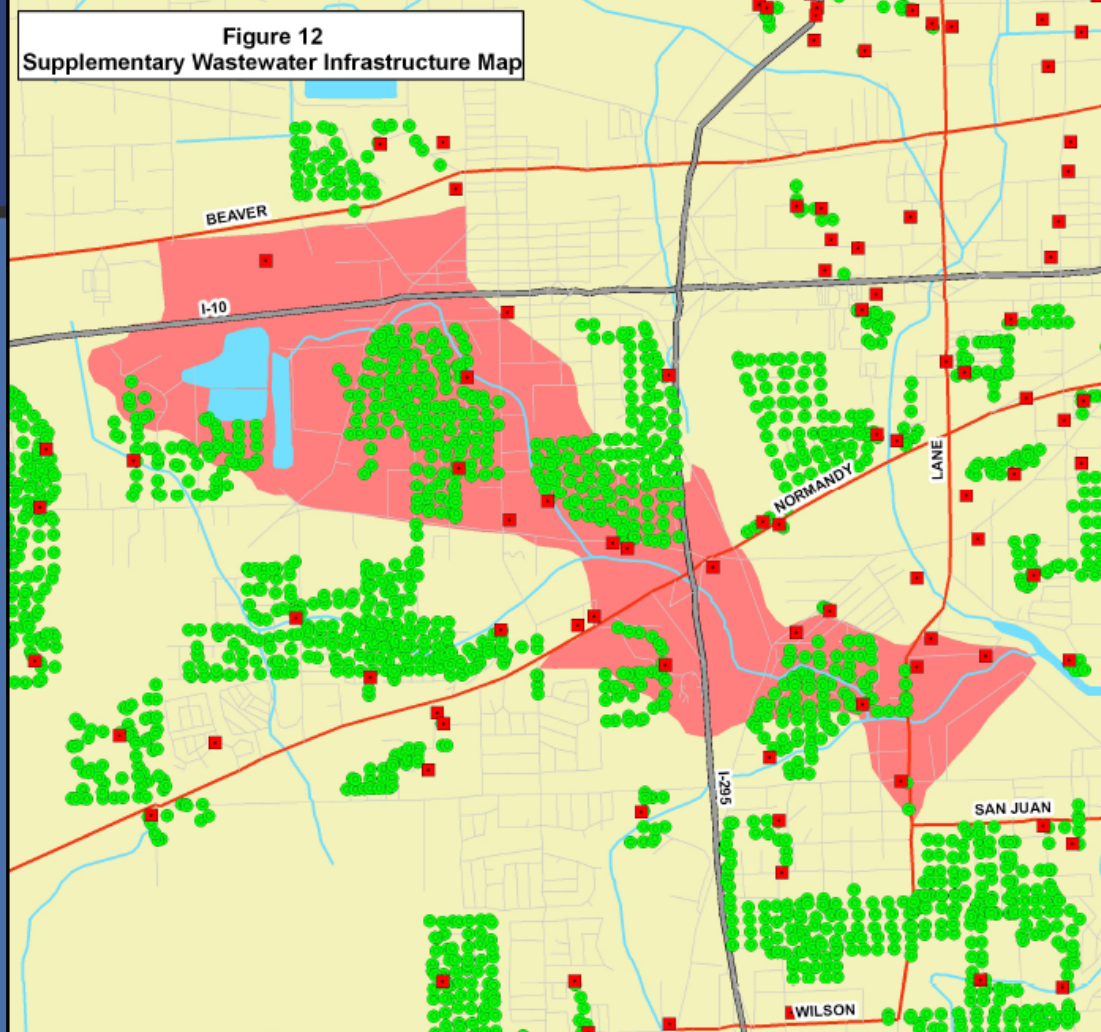











Figure 12  
Supplementary Wastewater Infrastructure Map



**Legend**

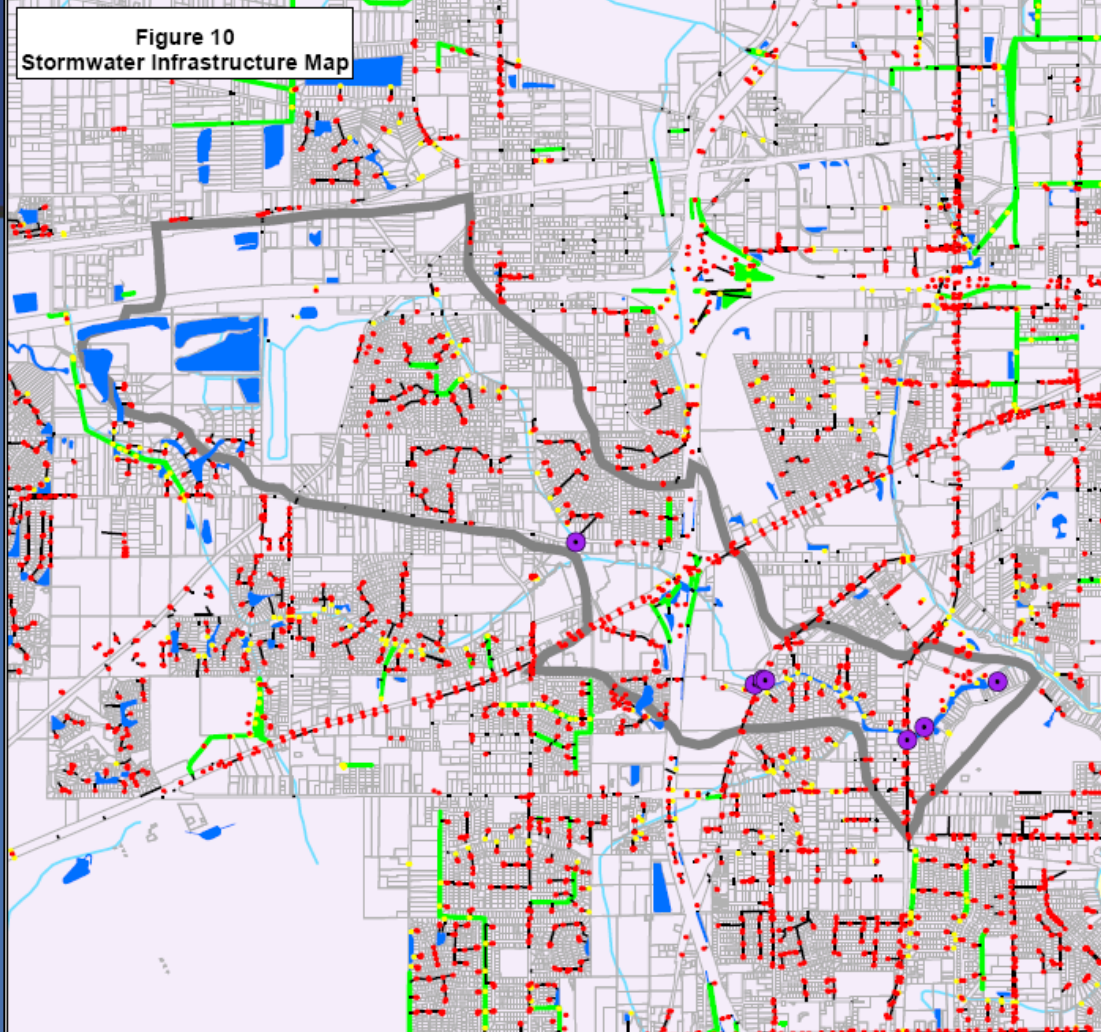
-  Wills Branch (WBID 2282) Watershed
-  Water Body
-  Interstate
-  Primary Road
-  Local Road
-  Lift Station
-  Manhole

0 0.2 0.4 0.8 1.2 Miles










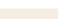
**Overview**



Figure 10  
Stormwater Infrastructure Map



**Legend**

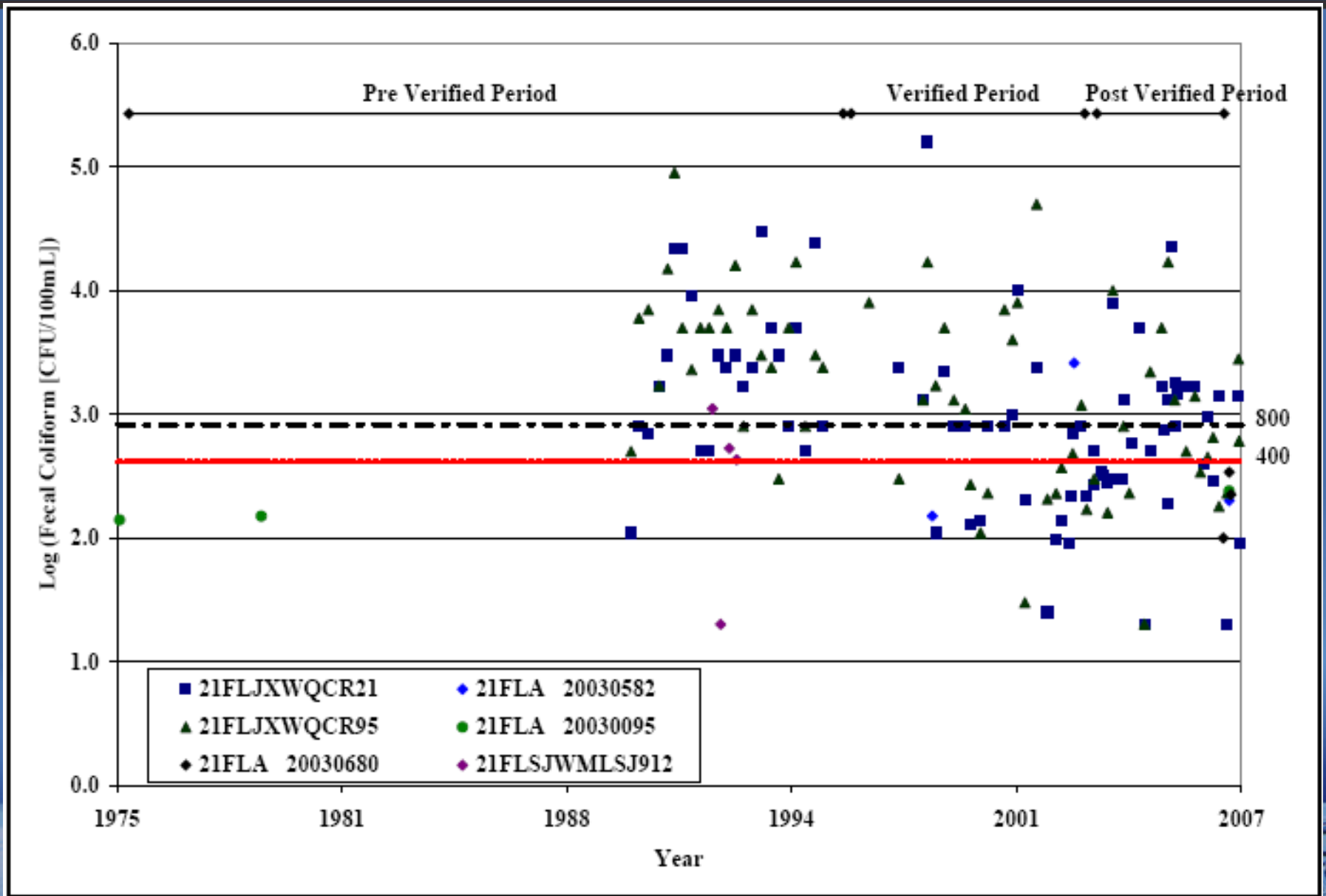
-  Wills Branch Watershed (WBID 2282)
-  Closed Conveyance
-  Pond
-  Inlet
-  Outfall
-  Ditch
-  IWR Fecal Coliform Sample Site
-  Parcel
-  Water Body
-  MS4: Duval Main

0 0.25 0.5 1 Miles


**Overview**



# Time Series Analysis of FC Data



# Existing County-Wide Management Actions

- **TAT** intensive localized sampling
  - **JEA**
    - FOG Reduction Program
    - SSO Root Cause Program
    - Pop-Top Program
  - **COJ EQD**
    - Private lift station inspection program
    - PIC Program (as of Oct. 2007)
  - **DCHD**
    - OSTDS inspection program
    - Designation of failure and nuisance areas
      - Based on information provided by COJ EQD and PWD
  - **COJ PWD and FDOT**
    - Routine cleaning program and complaint-driven maintenance
- 



# Suggested Management Actions

- Establish **additional routine sampling locations** to assist in targeting sources
- Perform **infrastructure inspections** upstream of chronic elevated concentrations
- Implement a **subsidized septic tank-pumping program** that could be used in conjunction with septic system phase-out programs
- Conduct **more extensive routine maintenance** of stormwater conveyance systems

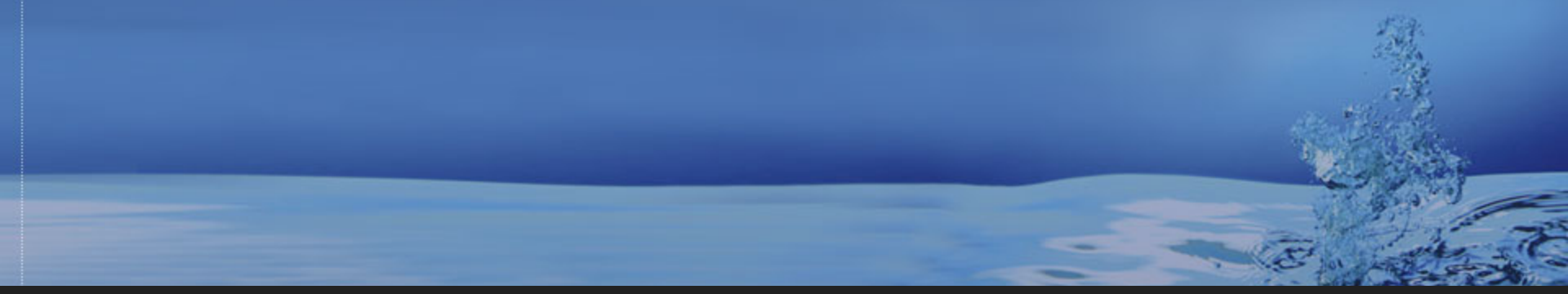
# Technical Report Schedule

- TAT data submittal deadline
- FDEP review period
  - PBS&J incorporation of comments
- Work Group review period
  - PBS&J incorporation of comments
- Draft Final to FDEP
- All reports due by November 8, 2010

**45 Reports Completed**

**+ 3 reports in review process**

# **Detailed Assessment of Fecal Coliform Sources**





# Study Area





# Approach

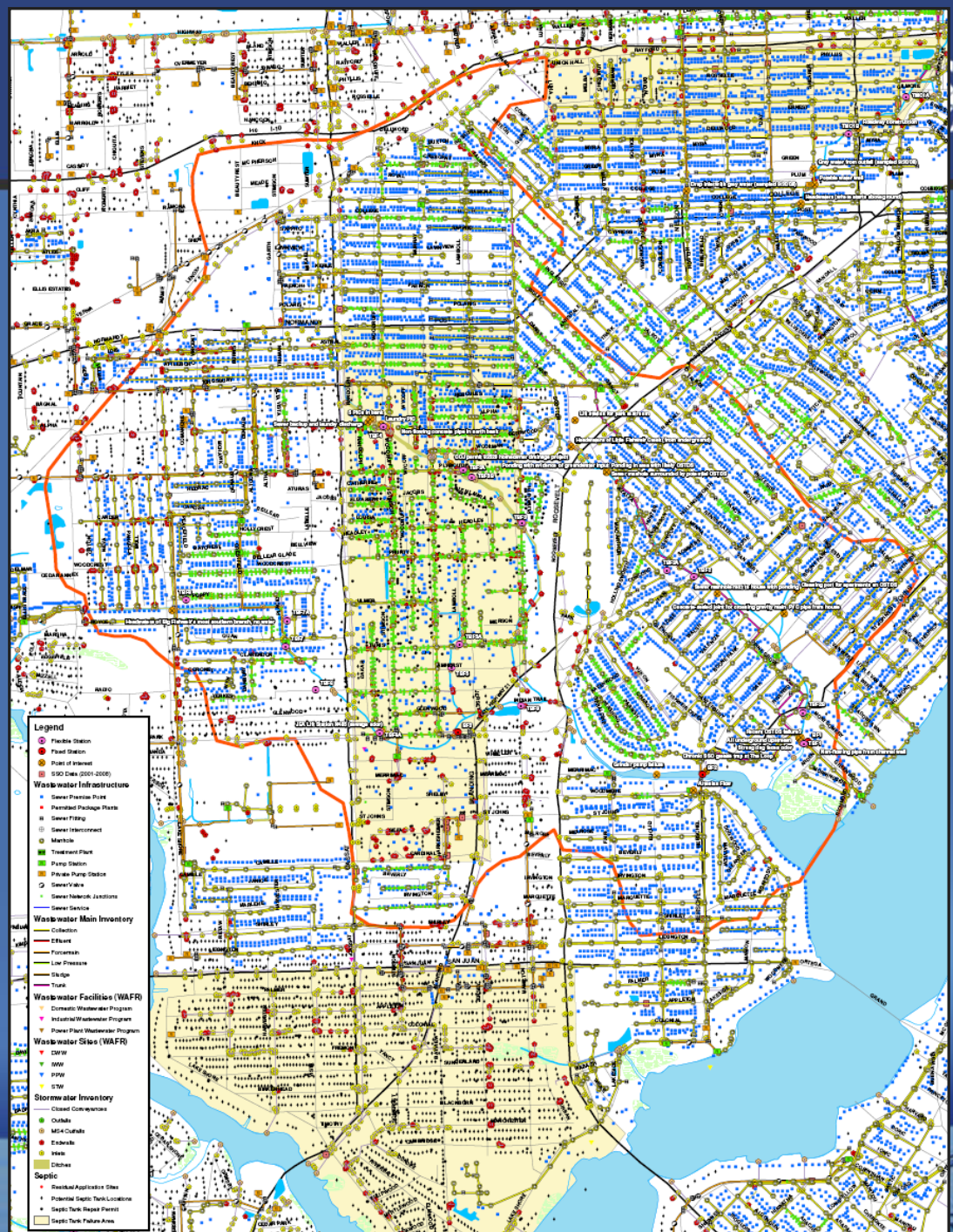
## Use “weight-of-evidence” approach to assess potential sources of fecal contamination

- Analysis of existing monitoring and GIS data
- “Maps on the table” workshop
- Field reconnaissance (“Walk the WBID”)
- Microbial Source Tracking (MST)
- Continual updates and investigation with local stakeholders





# Approach: GIS Analysis





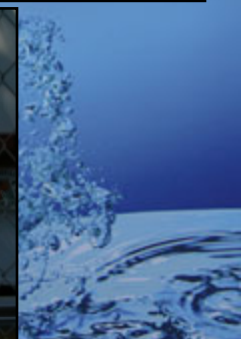
# Approach: *Walk the WBID*

Representatives from each TAT entity with the most field knowledge of basins

>20 participants

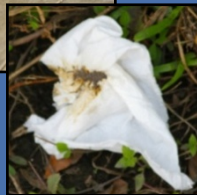
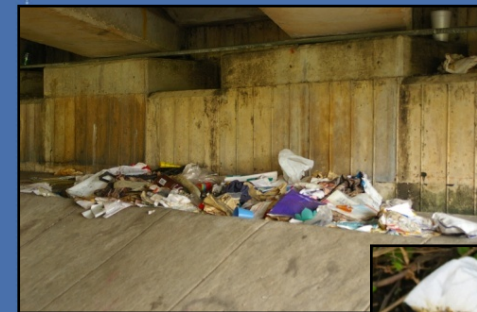
**COJ EQD, COJ PWD, DCHD, FDEP, FDOT, JEA, PBS&J, and USF**

8 days over two events (Sept. & Oct. 2008)





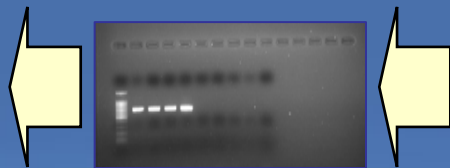
# Walk the WBID: *General Findings*



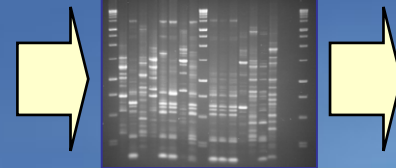


# Central Hypothesis of MST

- Certain microbial species or types are associated with the gastrointestinal tract of specific animal hosts
- This association can be used to “track” the fecal microorganism back to its host
- “Toolbox approach” – methods constantly evolving



Library-  
independent  
MST



Library-  
dependent  
MST



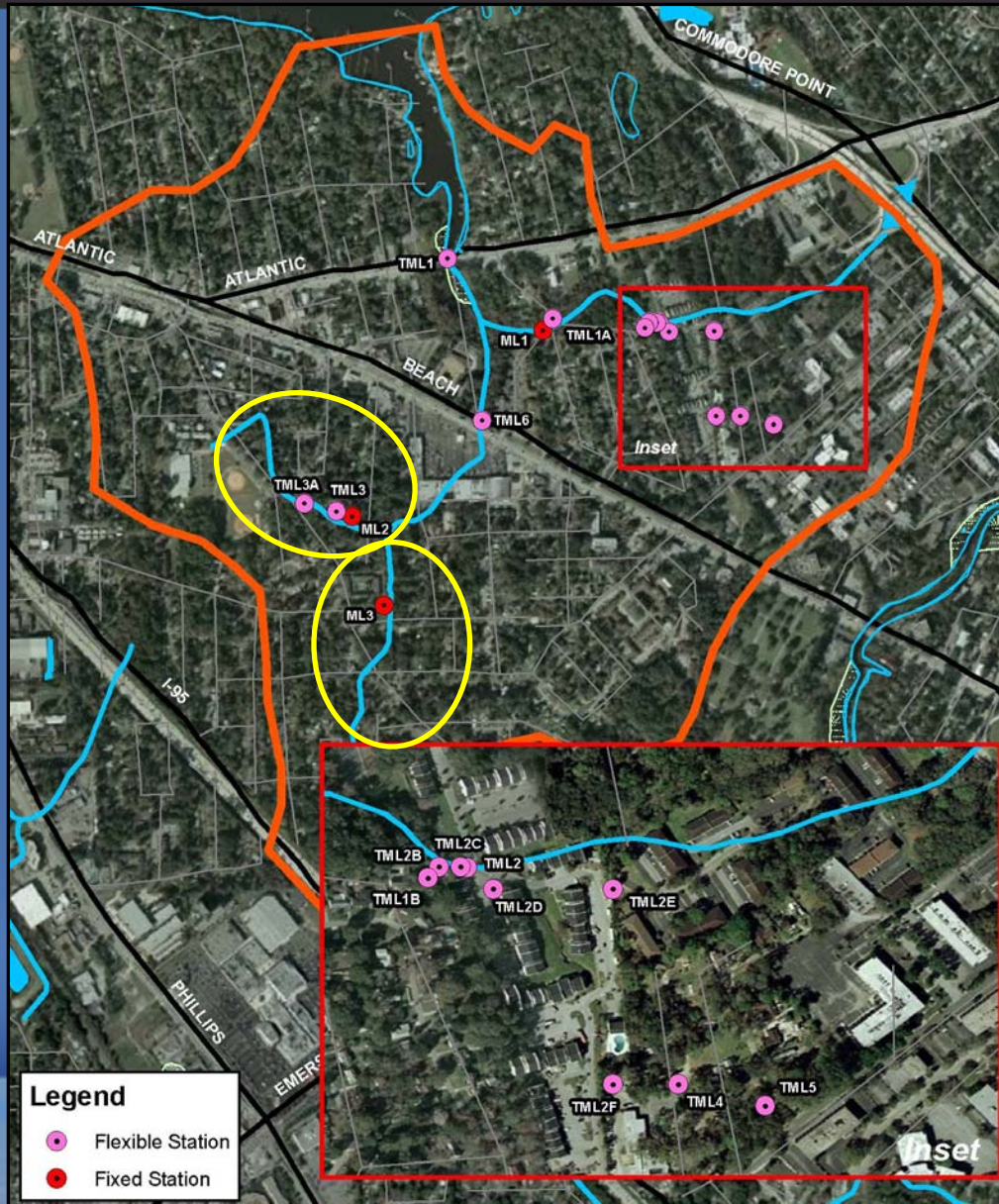
# Approach: *Microbial Source Tracking*

- Sampling performed by PBS&J, USF, and the TAT over 8 months (December – July)
- Analysis by TAT labs, USF, and Source Molecular
- Bimonthly meetings with TAT
- Ongoing communication and field investigation



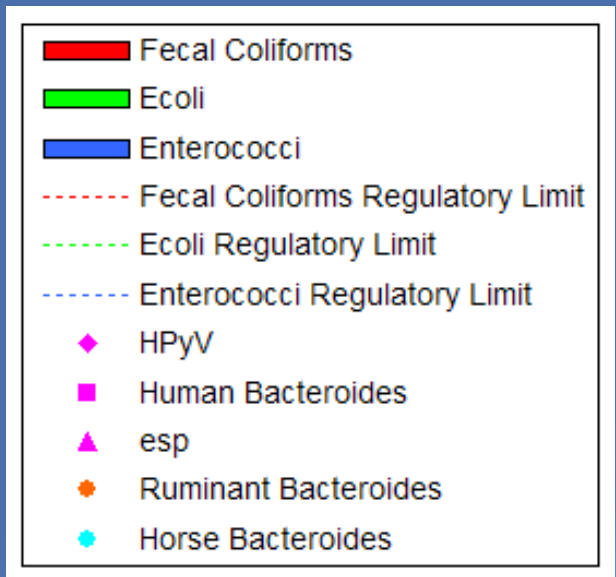
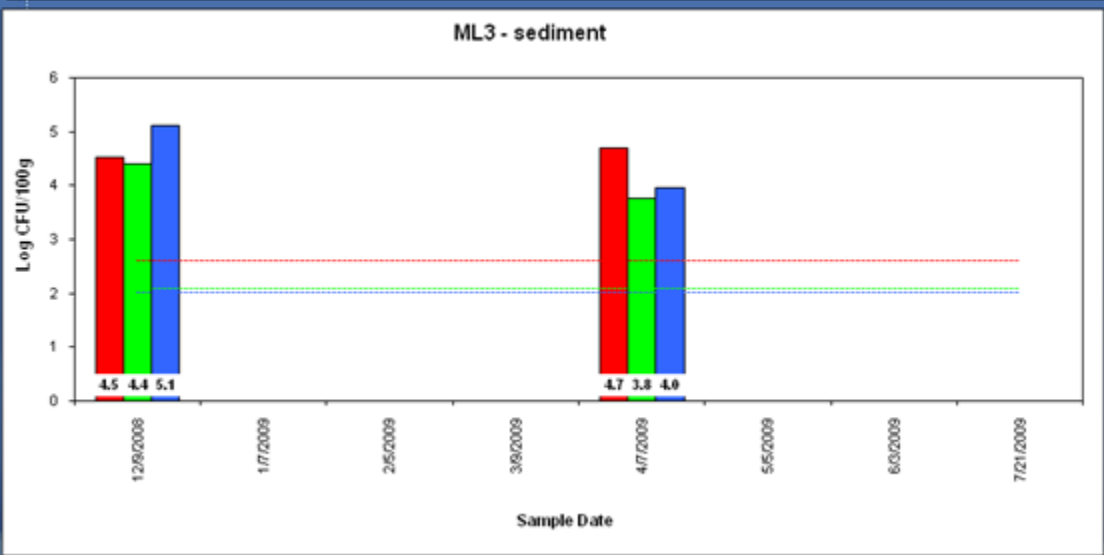
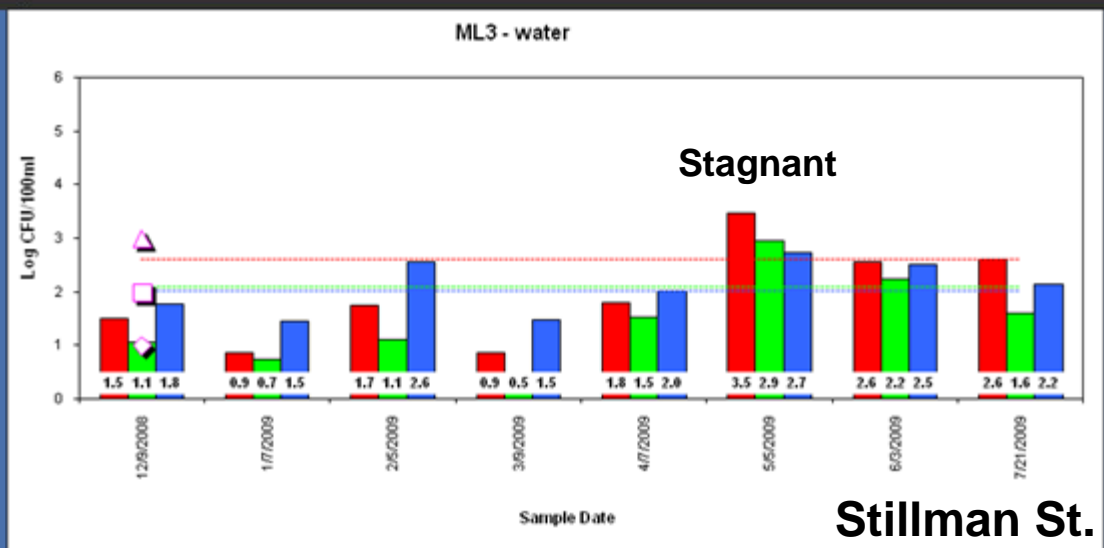


# Miller Creek (WBID 2287)



# Miller Creek (WBID 2287)

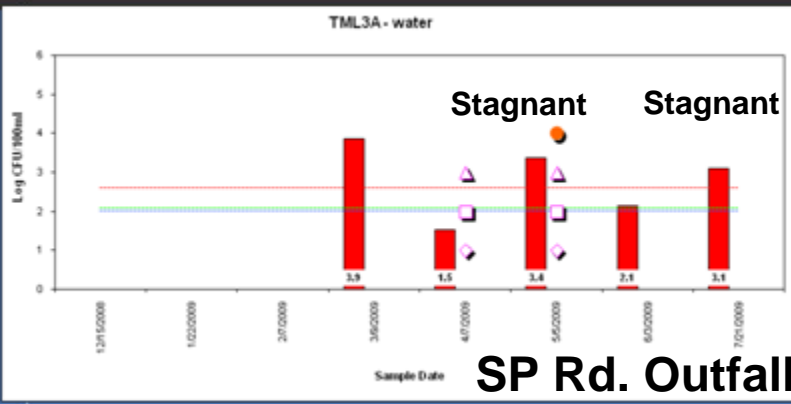
## Southern Fork



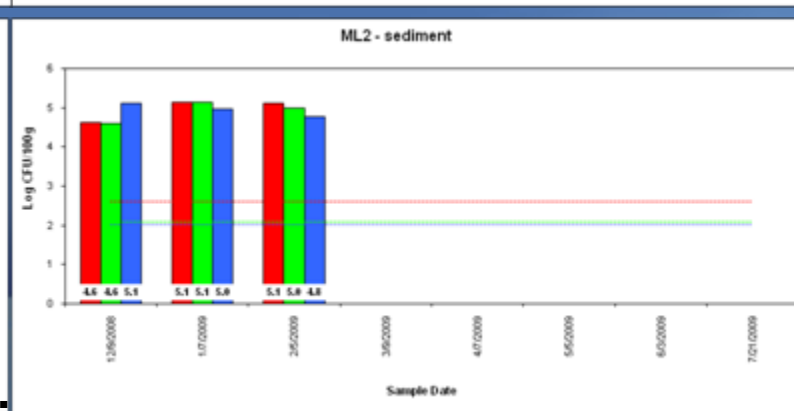
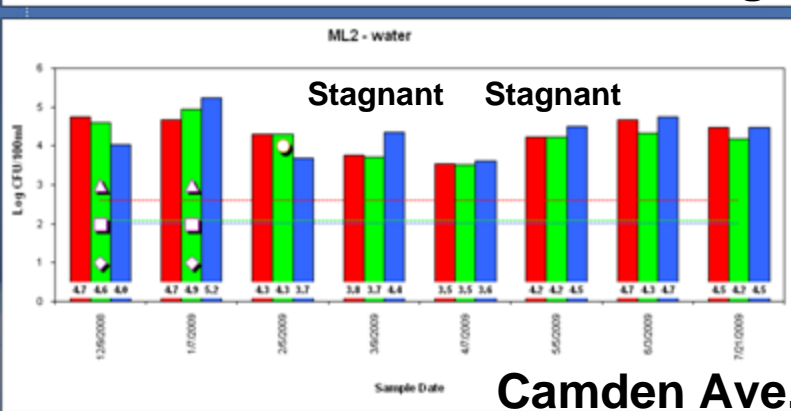
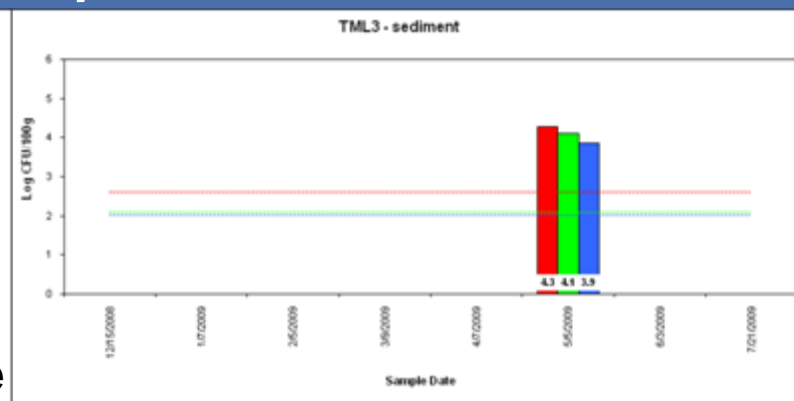
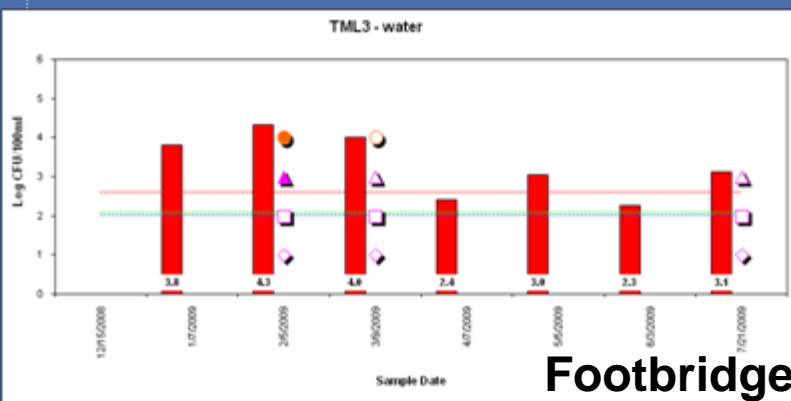


# Miller Creek (WBID 2287)

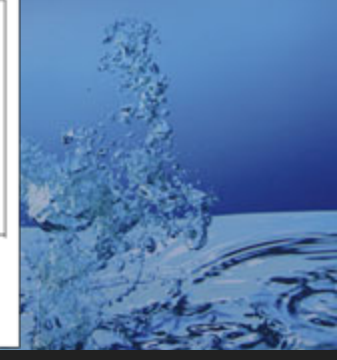
## Northern Fork



SP Rd. Outfall  $esp = 0.0006\%$ ;  $<1\%$  human contamination



Camden Ave.



# Miller Creek (WBID 2287)

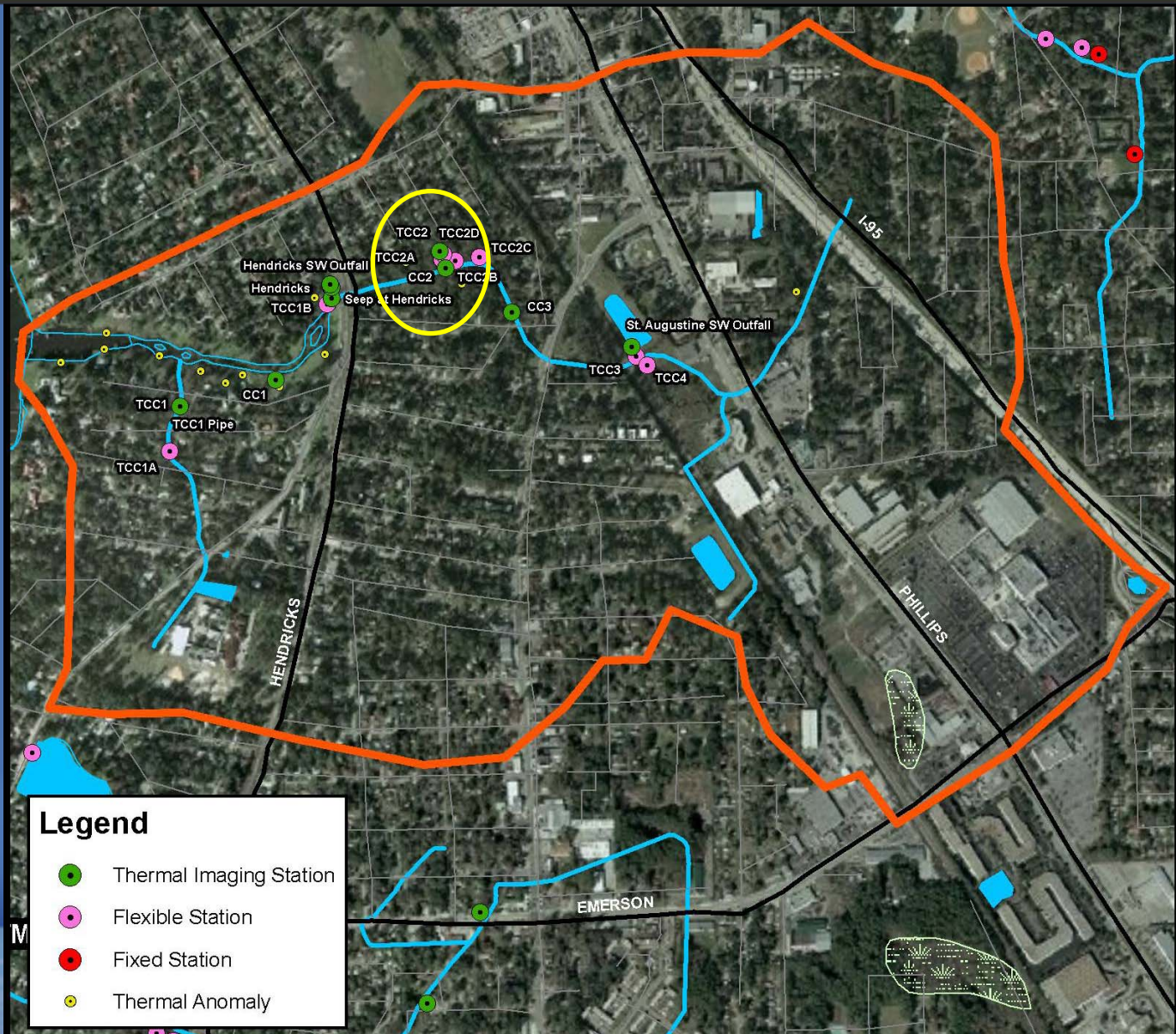


## Northern Fork





# Craig Creek (WBID 2297)



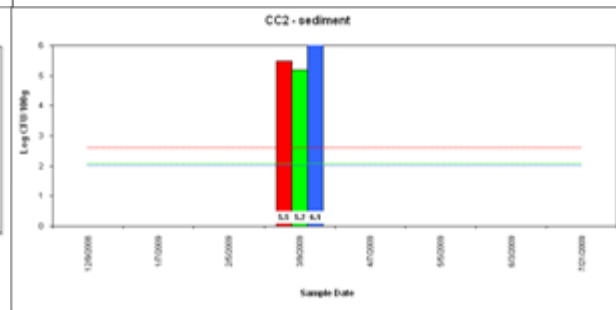
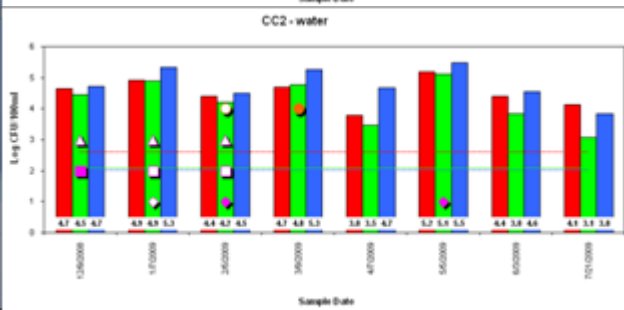
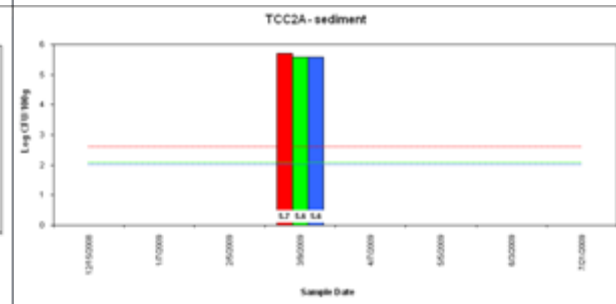
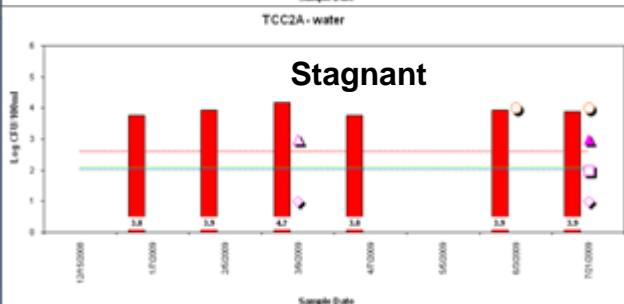
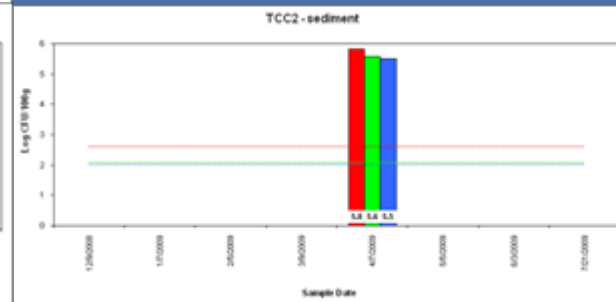
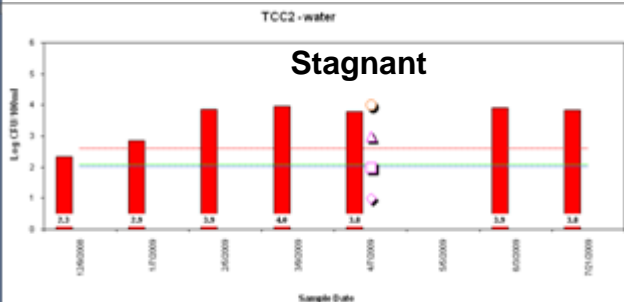
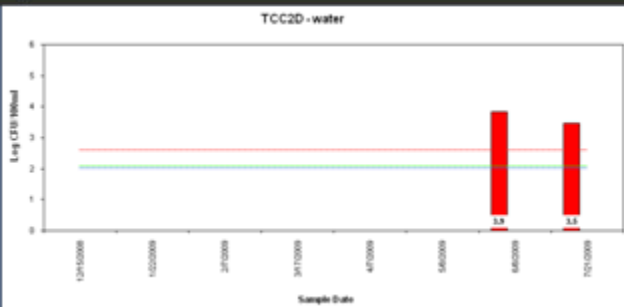
**Legend**

- Thermal Imaging Station
- Flexible Station
- Fixed Station
- Thermal Anomaly



# Craig Creek (WBID 2297)

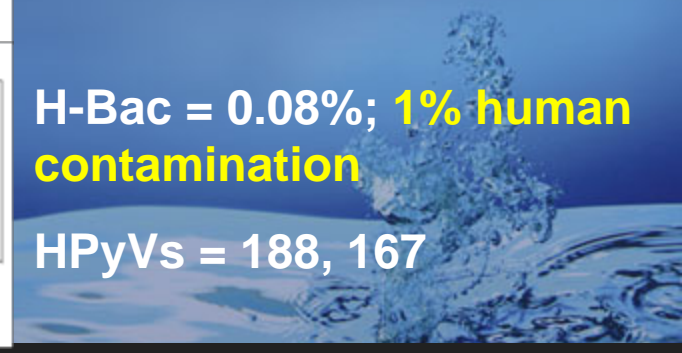
"2nd Trib"



esp = 0.03%; 1% human contamination

H-Bac = 0.08%; 1% human contamination

HPyVs = 188, 167

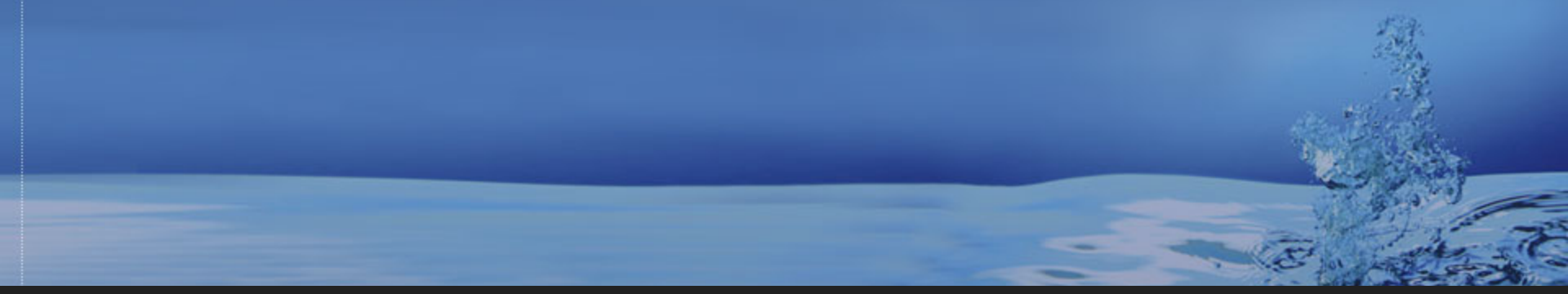


# Craig Creek Investigation



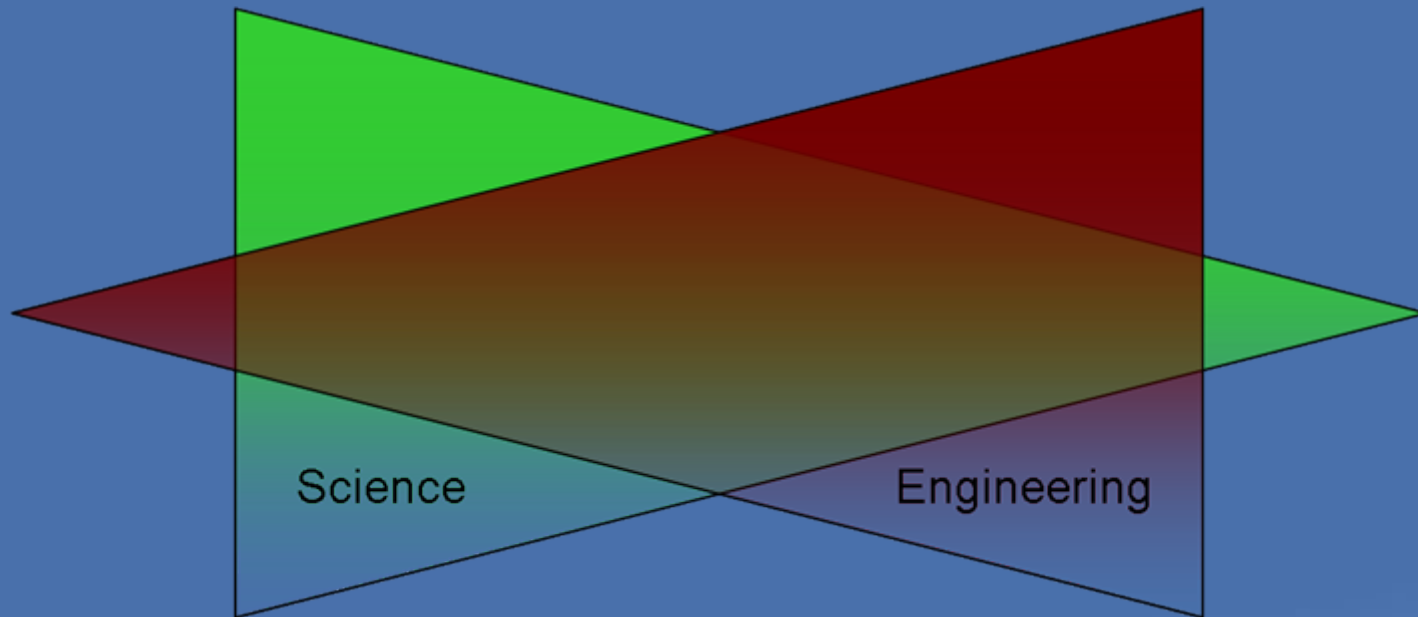
- April 21, 2009: JEA dye tested gravity line between Hendricks Ave. and Fieldston Ln.; no leaks detected
- April 23, 2009: PBS&J ruled out 2 nearby thermal anomalies
- July 7, 2009: JEA inspected other sewer lines in area; all lines identified as HDPE (as of ~2003) except along Thornwood Ln. which were made of vitrified clay and cast iron. Laterals associated with HDPE lines are HDPE to the right-of-way.
- August 20, 2009: JEA completed CIPP of VC and CI lines. Laterals remain VC on JEA and private side (unless replaced by owner). As of August 25, 2009, there are no plans to replace these laterals.

# Science and Engineering





# TMDLs: *science & engineering*



Observe → Analyze → Design → Construct

**Need sound science to have sound engineering**

*Do not translate into action*

**Facts**  
(limited or no interpretation,  
not applied in context)

**Misapplied science**  
(one size fits all, out of  
context)

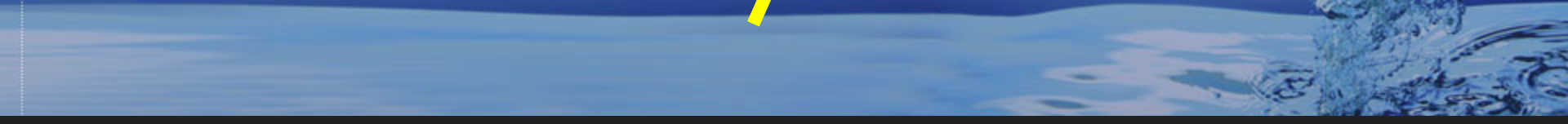
**Place-based science**  
(local knowledge &  
wisdom applied in context)



*Boundary between analysis & action*

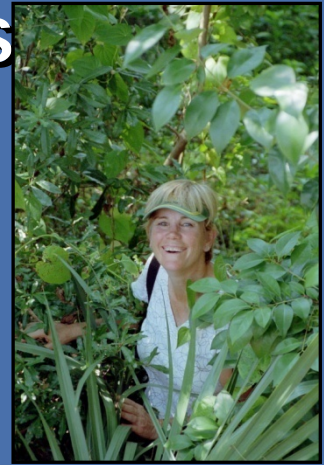
*Poor planning &  
potential harm*

*Effective  
planning &  
action*



# Acknowledgements

- Florida Department of Environmental Protection (FDEP)
- LSJR TAT and Work Group
- Dr. Valerie J. ("Jody") Harwood, University of South Florida
- Shannon McQuaig, University of South Florida
- Chris Staley, University of South Florida
- Source Molecular
- DEP Law Enforcement





# More Information



**Cheryl M. Wapnick**  
**Senior Scientist**  
**(904) 363-8443**  
**[cmwapnick@pbsj.com](mailto:cmwapnick@pbsj.com)**