

# Economic Profile of Duval County

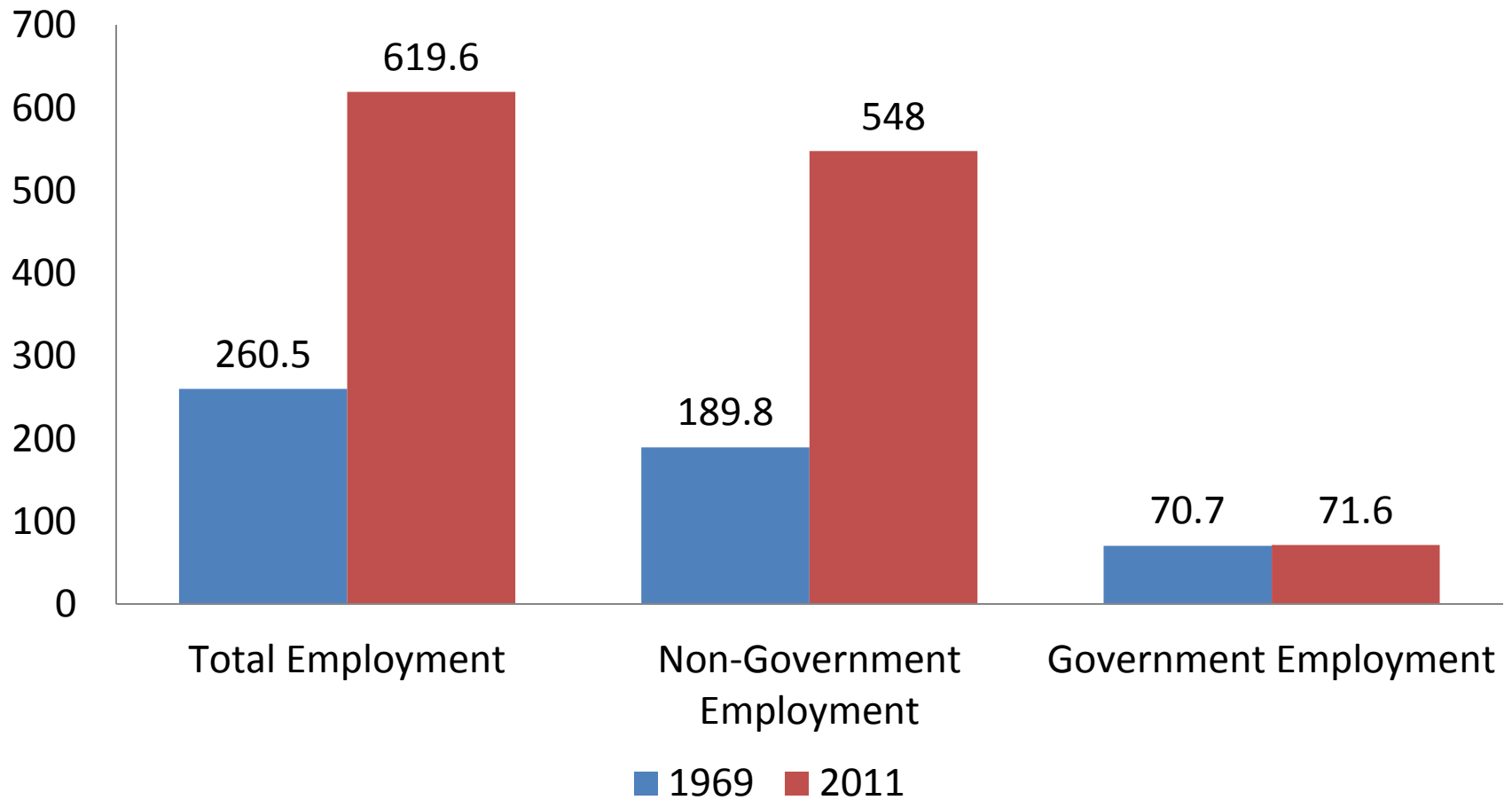
Presented to Councilwoman Lori Boyer and  
the Consolidation Task Force  
August 28, 2013

Prepared by Dr. Christopher Johnson,  
Associate Professor of Economics  
University of North Florida

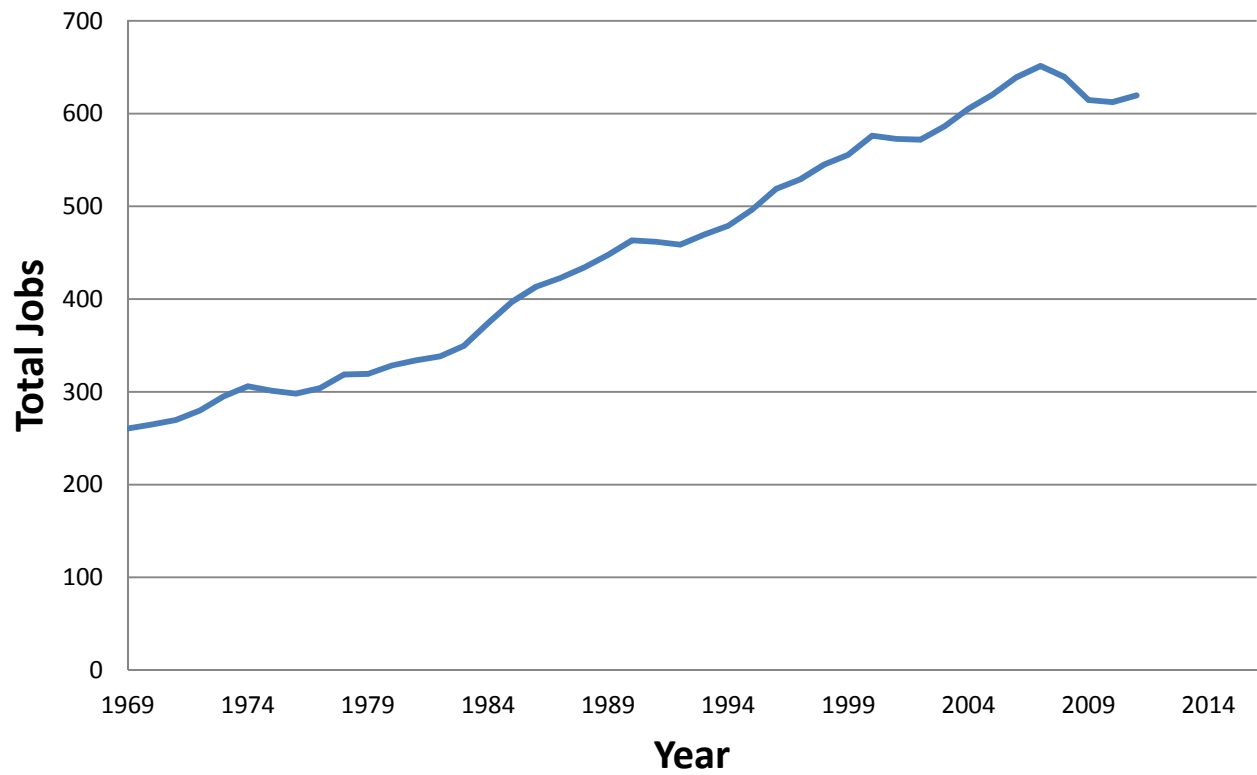
# Overview of Contents

- Employment Profile
  - Total Jobs
  - Unemployment Rates
- Income Profile
  - Income Per Capita
  - Average Earnings Per Job
- Poverty Analysis
- Industry Composition and Changes

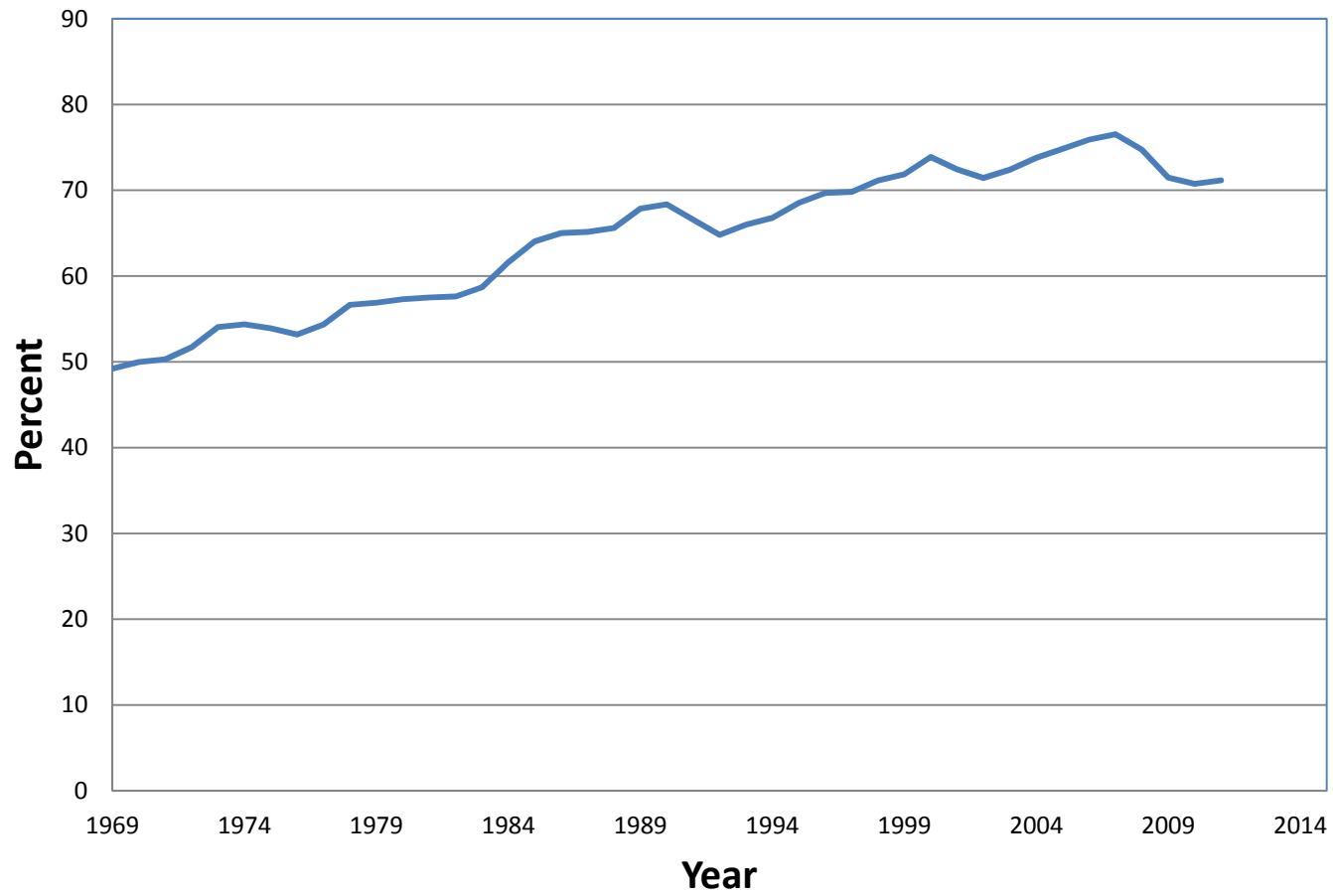
# Total Jobs: Then and Now (In Thousands)



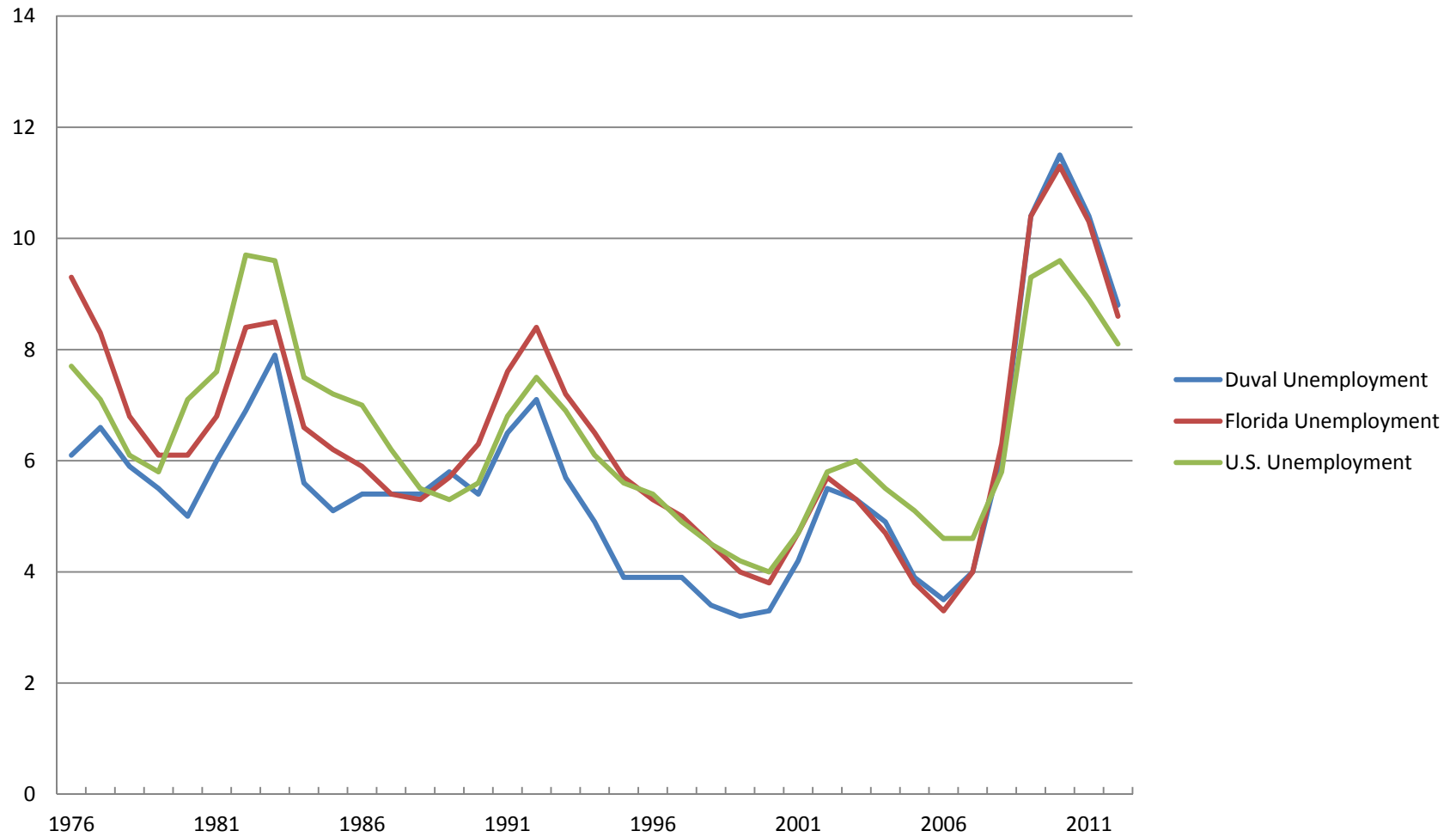
## Total Jobs in Duval County by Year: 1969 – 2011 (in thousands)



## Total Jobs as a % of Duval County Population (1969 - 2011)

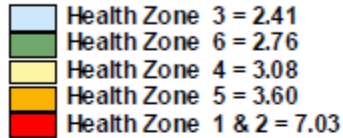


# Unemployment Rates: 1976 - 2012

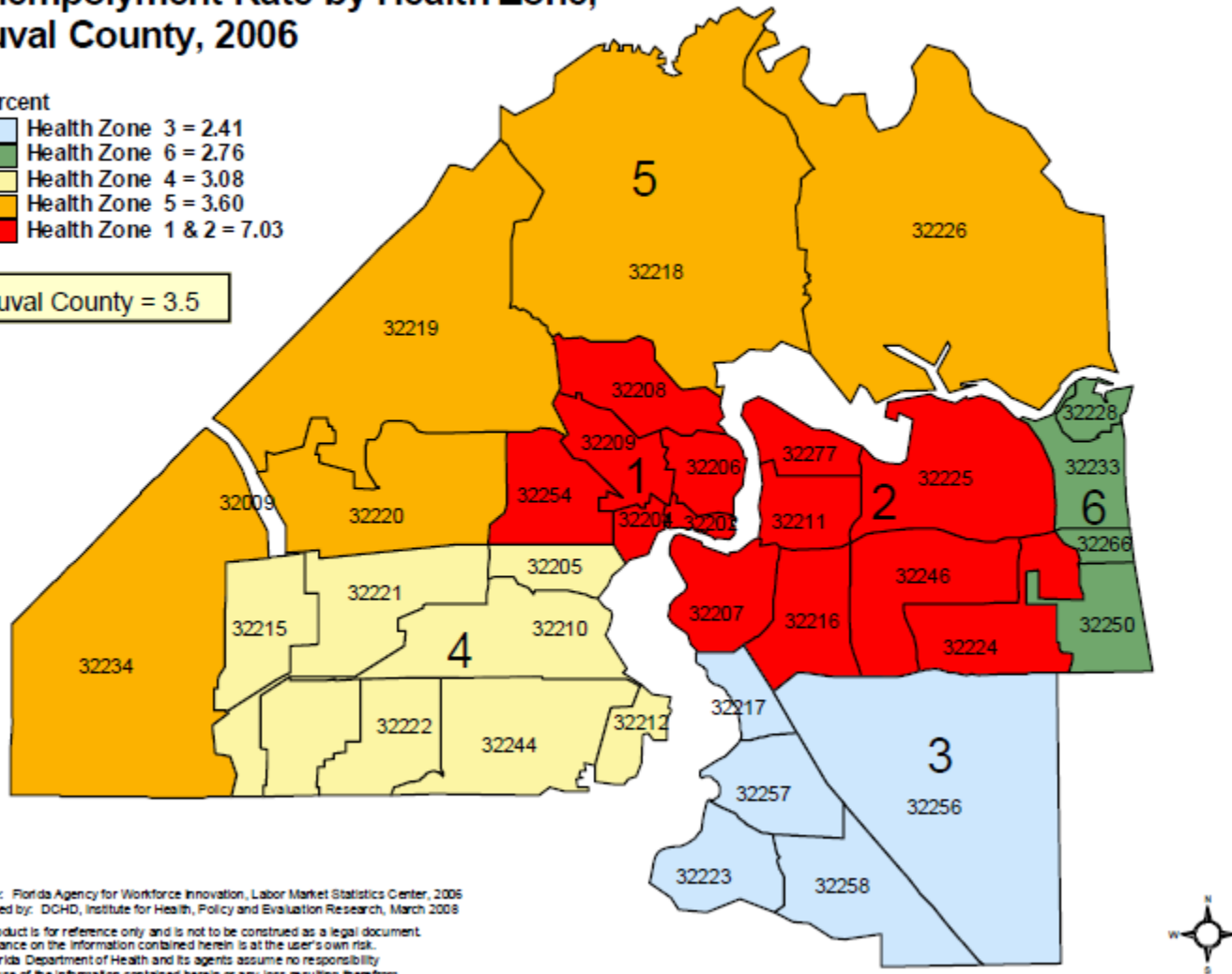


## Unemployment Rate by Health Zone, Duval County, 2006

Percent



Duval County = 3.5



Source: Florida Agency for Workforce Innovation, Labor Market Statistics Center, 2006  
 Prepared by: DCHD, Institute for Health, Policy and Evaluation Research, March 2008  
 This product is for reference only and is not to be construed as a legal document.  
 Any reliance on the information contained herein is at the user's own risk.  
 The Florida Department of Health and its agents assume no responsibility  
 or any use of the information contained herein or any loss resulting therefrom.

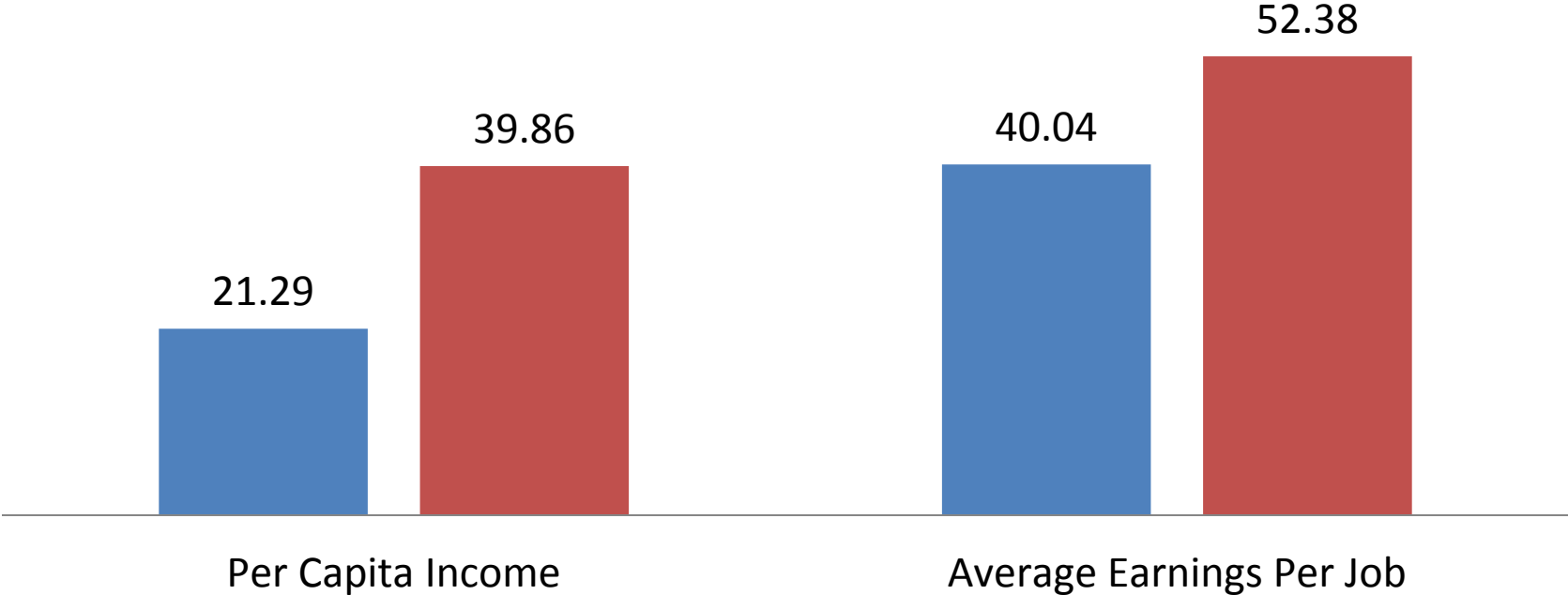


**Figure Taken from "Health: Place Matters," Duval County Health Department, Center for Health Statistics Study, Volume 7, Issue 1, March 2008**

# Income Snapshot: Then and Now

**Per Capita Income and Average Earnings Per Job  
(in thousands of 2011 dollars)**

■ 1969 ■ 2011

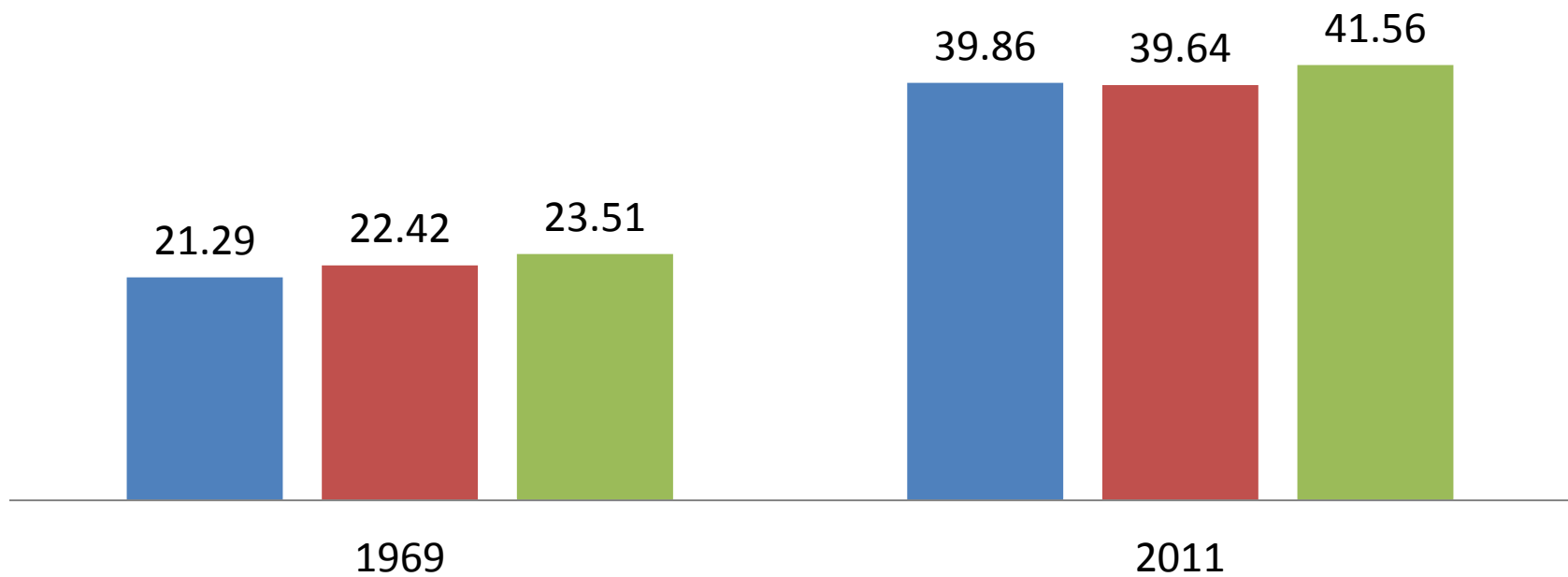




# Per Capita Income Comparison

**Per Capita Income  
(thousands of 2011 dollars)**

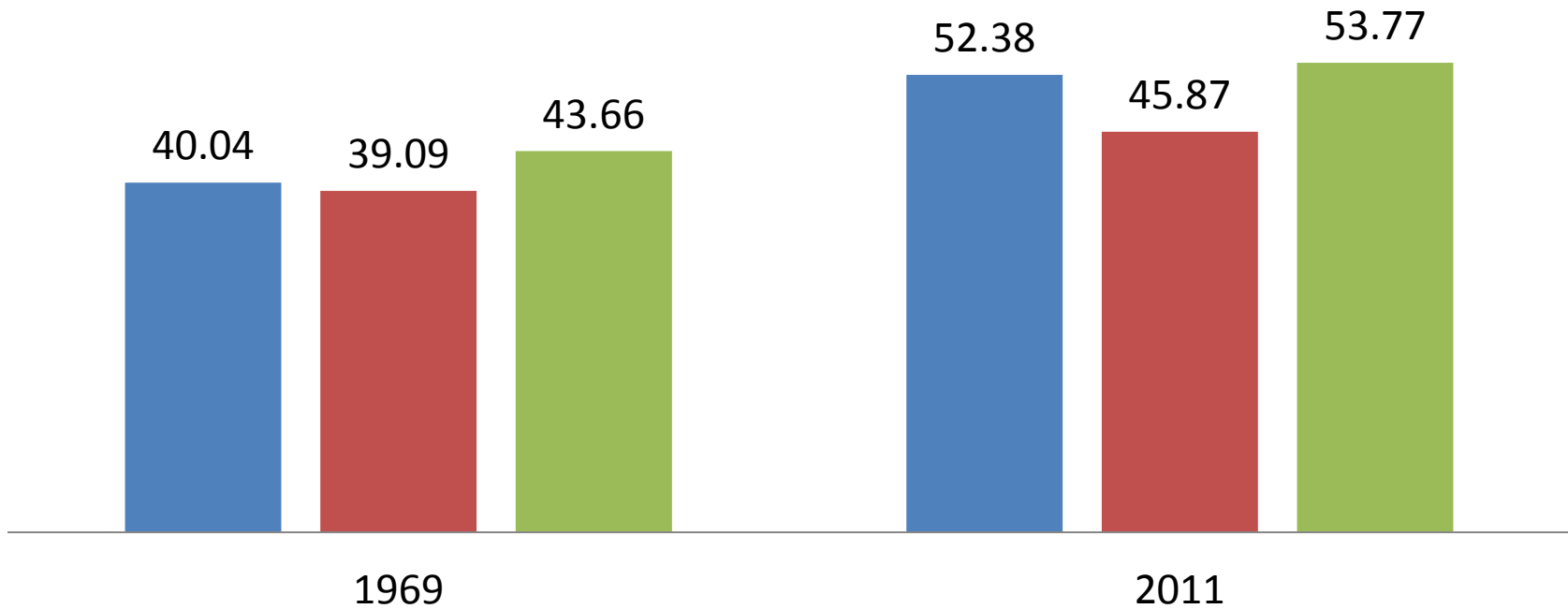
■ Duval ■ Florida ■ USA



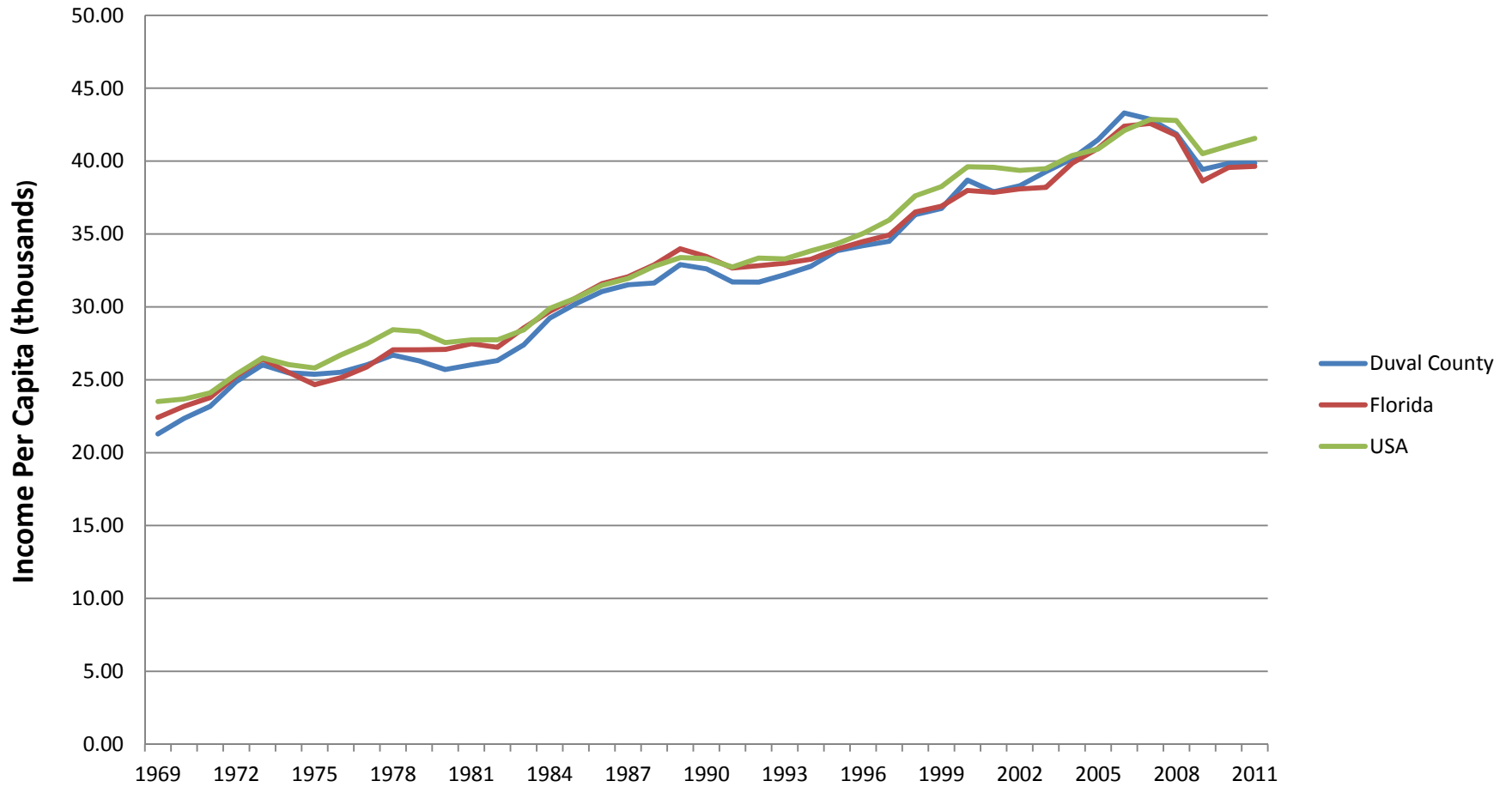
# Average Earnings/Job Comparison

**Average Earnings Per Job  
(thousands of 2011 dollars)**

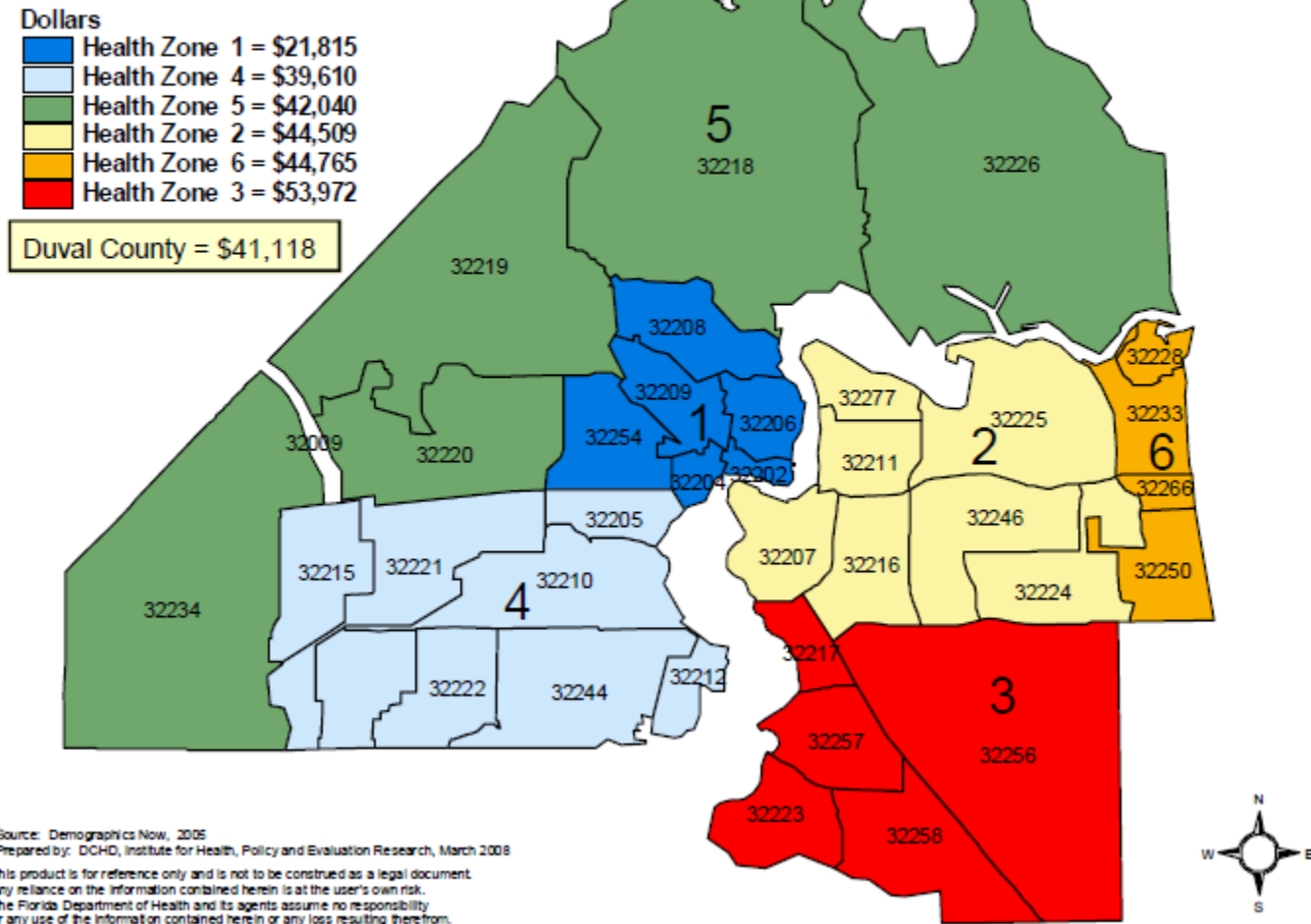
■ Duval ■ Florida ■ USA



# Real Per Capita Income Across Time: 1969 -2011 (inflation adjusted, 2011 base year)

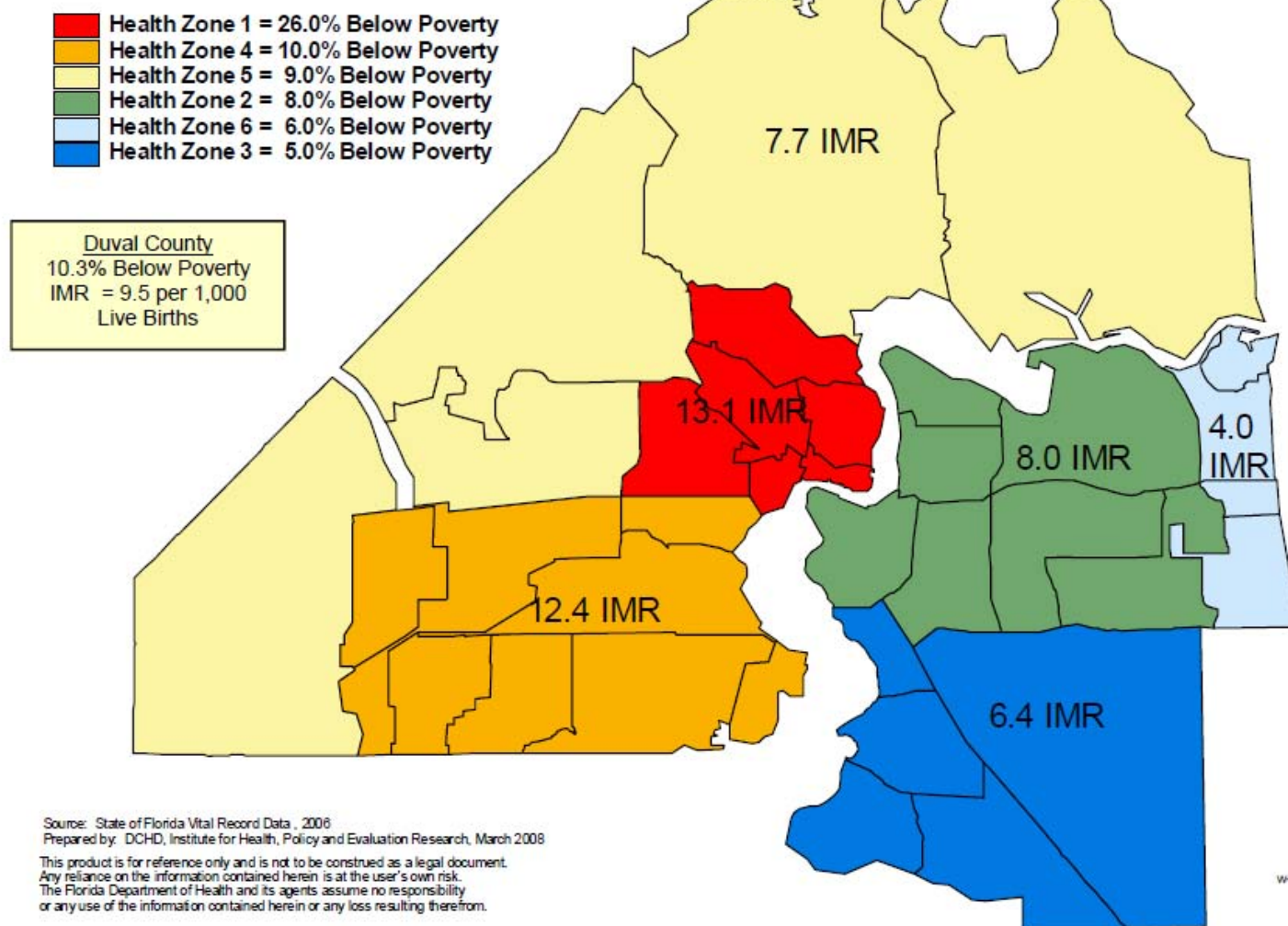


## Average Household Income by Health Zone, Duval County, 2005



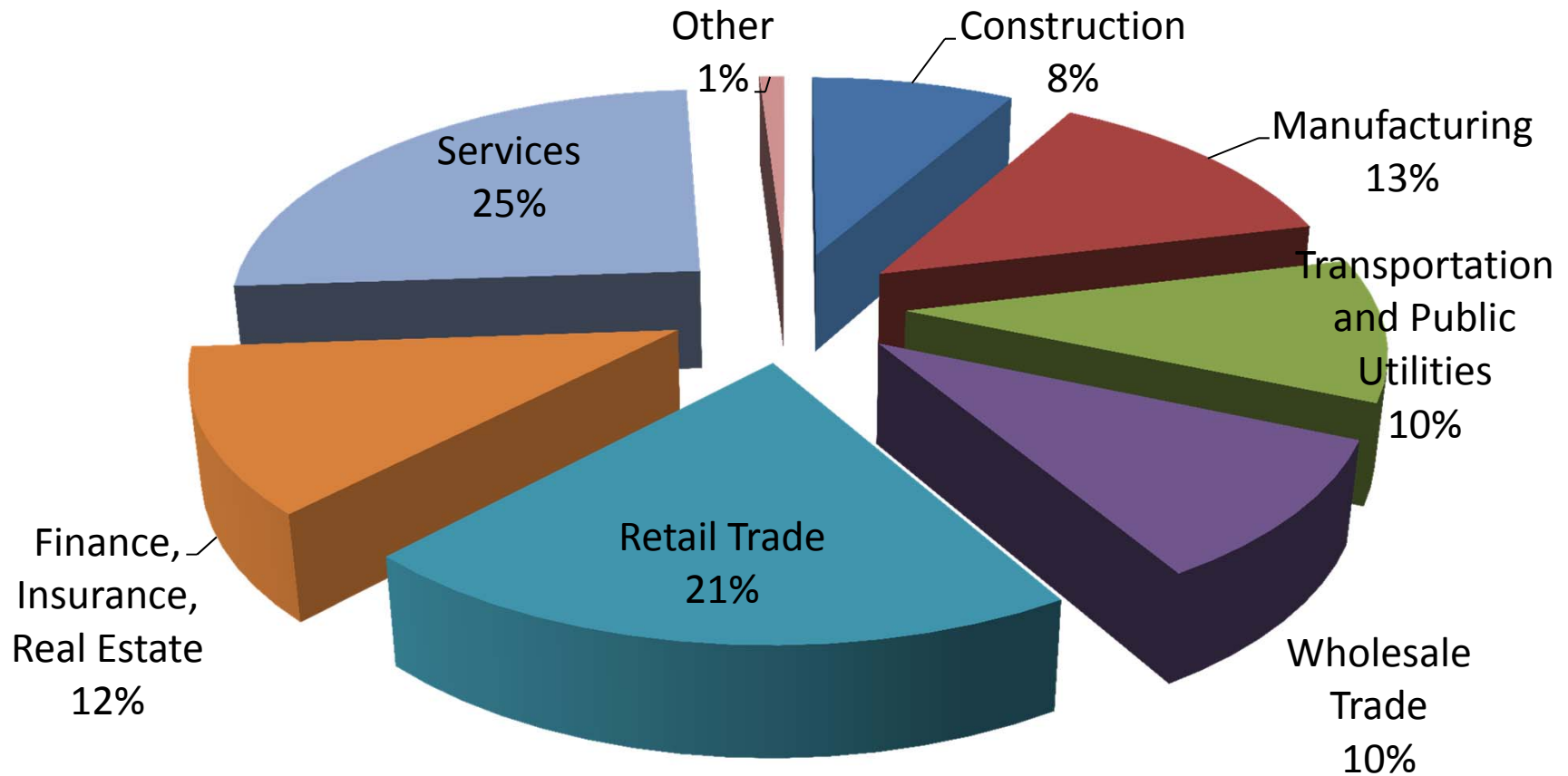
**Figure Taken from "Health: Place Matters," Duval County Health Department, Center for Health Statistics Study, Volume 7, Issue 1, March 2008**

## Poverty \* and Infant Mortality by Health Zone, Duval County, 2006

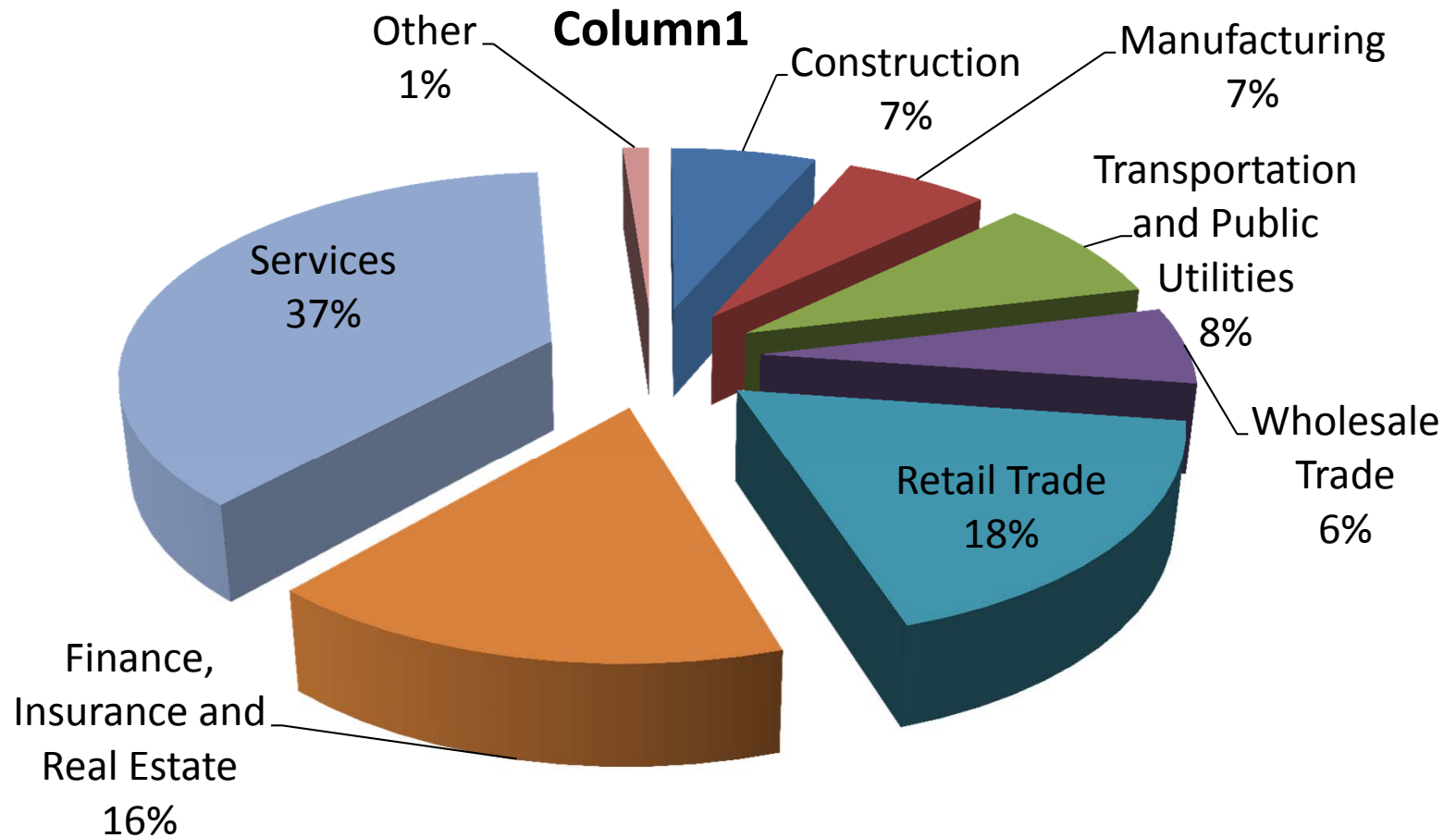


**Figure Taken from "Health: Place Matters," Duval County Health Department, Center for Health Statistics Study, Volume 7, Issue 1, March 2008**

# 1969 Industry Breakdown



# 2000 Industry Breakdown



# Industry Proportion of Overall Local Economy

<b>INDUSTRY</b>	<b>1969</b>	<b>2000</b>
Construction	8.18	6.58
Manufacturing	13.04	6.54
Transportation and public utilities	10.21	8.49
Wholesale Trade	10.07	6.19
Retail Trade	20.67	18.23
Finance, insurance, and real estate	11.70	14.63
Services	25.14	38.02
Other	1.00	1.20